

FACT SHEET

2022 election

8 OCTOBER 2022

What does Council do?

While city or district councils are responsible for a wide range of local services in your area, the role and responsibilities of the Regional Council involve managing the region's natural resources - it manages land, air, coast and the quality of water in our lakes and rivers. They are also responsible for biodiversity, regional parks, flood protection, emergency management and regional transport. The Regional Council works closely with city or district councils and other agencies on some issues, to ensure they are managed to benefit the entire region.

Background

Local government triennial elections are being held by postal vote on Saturday 8 October 2022 and will be undertaken by Election Services, under contract to the Northland Regional Council.

The elections are undertaken on behalf of the regional council by its three constituent territorial authorities (Far North District Council, Whangārei District Council and Kaipara District Council). In addition to their own elections (Mayor, Council etc), each constituent territorial authority is also required to undertake regional council elections.

The first past the post (FPP) electoral system will be used for the Northland Regional Council elections.

2022 Key Dates

Nominations open	Friday 15 July
Nominations close	Noon, Friday 12 August
Delivery of voting packs	from Friday 16 September
Close of voting	Noon, Saturday 8 October
Official results announced	Thursday 13 October

Who is being elected?

Following the decision to establish Māori constituencies in 2021, Northland Regional Council undertook a representation arrangements review (review of constituencies, boundaries, number of elected members etc).

Elections will be required for the following positions:

- Councillors (9)
 - Far North General Constituency (1)
 - Bay of Islands-Whangaroa General Constituency (1)
 - Kaipara General Constituency (1)
 - Mid North General Constituency (1)
 - Coastal Central General Constituency (1)
 - Whangārei Central General Constituency (1)
 - Coastal South General Constituency (1)
 - Te Raki Māori Constituency (2)

How can I be nominated?

Nominations for these positions will open on **Friday 15 July 2022** and close at noon on **Friday 12 August 2022**.

Nomination papers will be available during this period:

- Council's Whangārei Office, 36 Water Street, Whangārei
- Council's Dargaville Office, 32 Hokianga Road, Dargaville
- Council's Kaitāia Office, 192 Commerce Street, Kaitāia
- Council's Waipapa Office, Shop 9, 12 Klinac Lane, Waipapa
- by accessing www.nrc.govt.nz;
- by telephoning the electoral office on 0800 922 822.

To be eligible to stand for election, a candidate **must** be:

- a New Zealand citizen (by birth or naturalisation ceremony); **and**
- enrolled as a Parliamentary elector (anywhere in New Zealand) on either the general or Māori electoral roll, irrespective of the constituency being nominated for; **and**
- nominated by two electors whose names appear on the respective electoral roll within the constituency that a candidate is standing for.

A detailed candidate information handbook will be available from April 2022.

Who can vote?

Those eligible to vote are all resident electors and non-resident ratepayer electors whose names appear on the electoral roll when it closes on Friday 12 August 2022. The Preliminary Electoral Roll will be available for public inspection from **Friday 15 July 2022** to **Friday 12 August 2022** at the above locations.

Resident Roll: All parliamentary electors, including those on the Māori Electoral Roll, are automatically enrolled on the Resident Roll, at the address where they live.

Any alterations to the Resident Roll (e.g. change of address details, including new postal addresses) should be made by:

- completing the appropriate form at any postal agency;
- phoning 0800 ENROLNOW (0800 36 76 56)
- accessing the Electoral Commission website on: www.vote.nz

Ratepayer Roll: If a person is on the parliamentary roll in one area and pays rates on a property in another area, this person may be eligible to be enrolled on the non-resident ratepayer roll. A firm, company, corporation or society paying rates on a property may nominate one of its members or officers as a ratepayer elector (provided the nominated person resides outside the area). Ratepayer Roll enrolment forms are available from respective territorial authority websites, or by phoning 0800 922 822.

Māori constituency councillors are elected by those enrolled on the Māori constituency electoral roll.

General constituency councillors are elected by those enrolled on the general constituency electoral roll.

How to vote?

Voting packs will be sent out in the mail to all those who have enrolled from **Friday 16 September 2022**.

The voting period is three weeks (**Friday 16 September 2022 to noon Saturday 8 October 2022**). Electors may post their completed voting documents back to the electoral officer using the orange pre-paid envelope sent with their voting document.

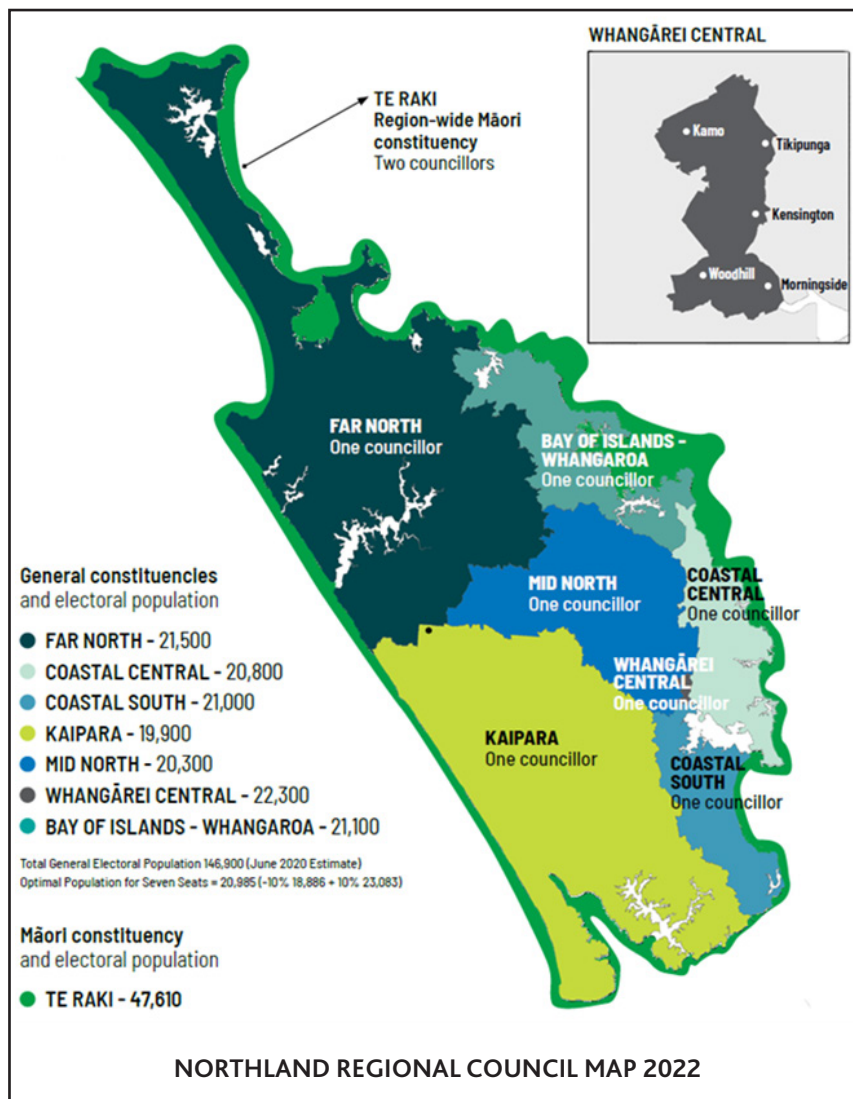
Polling places for the issuing of special voting documents and for the receiving of completed voting documents will be available from Friday 16 September 2022 to noon, Saturday 8 October 2022 at:

- Far North District Council's Main Office, 5 Memorial Avenue, Kaikohe

- Kaipara District Council's Main Office, 32 Hokianga Road, Dargaville
- Whangārei District Council's Office, Forum North, Rust Avenue, Whangārei.

To be counted, all completed voting documents must be in the hands of the electoral officer or an electoral official by **noon Saturday 8 October 2022**.

Progress results will be announced early afternoon of election day. Preliminary results will be announced early on Sunday morning, 9 October 2022, and final results will be known on Thursday 13 October 2022. All results will be accessible on Council's website: www.nrc.govt.nz



Contact us



Dale Ofoske, Electoral Officer
Independent Election Services Ltd
Level 2, 198 Federal Street, Auckland
PO Box 5135, Victoria Street West, Auckland 1142
Email: info@electionservices.co.nz
Phone: 0800 922 822

Chris Taylor, Governance Support Manager
Northland Regional Council
36 Water Street, Whangārei
Private Bag 9021, Whangārei Mail Centre, Whangārei 0148
Email: elections@nrc.govt.nz
Phone: 0800 002 004 or (09) 470 1224