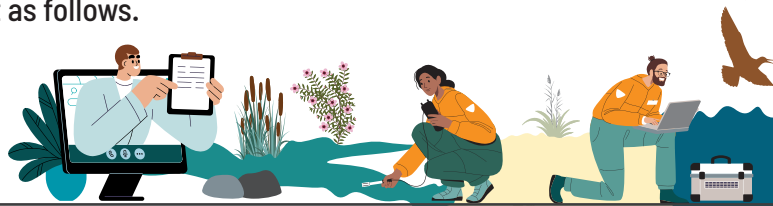


What we do Ā mātou mahi

For every \$1 of council income the money is spent as follows.

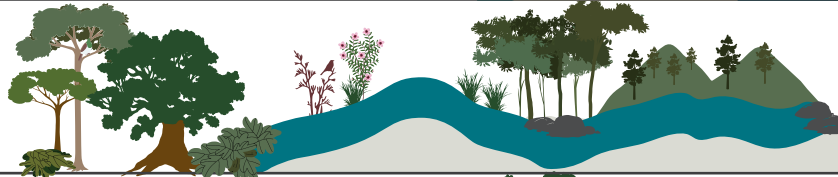
ENVIRONMENTAL MANAGEMENT

Environmental monitoring, consents, science and hydrology. **21.05c**



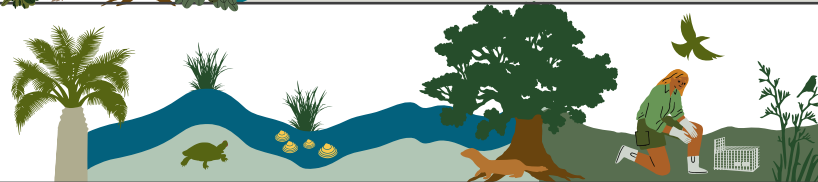
LAND AND WATER

Caring for the land, and the waterways it flows into. **8.15c**



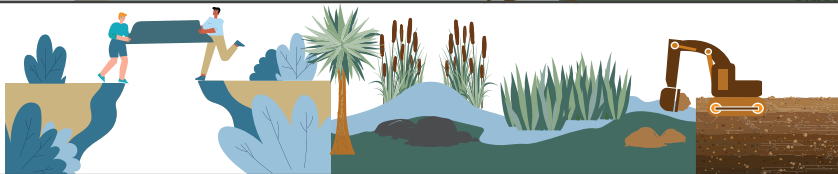
BIOSECURITY AND BIODIVERSITY

Working with others to get rid of pests and help native life thrive. **22.64c**



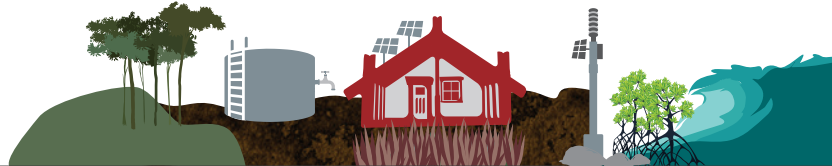
FLOOD PROTECTION

Protecting communities from the impacts of river flooding. **3.69c**



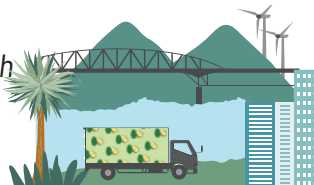
COMMUNITY RESILIENCE

Climate change resilience and emergency management. **8.17c**



REGIONAL LEADERSHIP

Economic development through Northland Inc, governance, policy and more. **18c**



TRANSPORT

Public buses and regional planning. **6.79c**



HARBOUR SAFETY

Harbourmaster, navigation aids, rules and education. **4.58c**



WORKING TOGETHER

Community engagement, Māori partnerships and school programmes. **6.93c**



For more info visit
www.nrc.govt.nz

Northland
REGIONAL COUNCIL
Te Kaunihera ā rohe o Te Taitokerau

Working for a thriving Northland

E mahi nei kia tōnui ai
Te Taitokerau



Northland
REGIONAL COUNCIL
Te Kaunihera ā rohe o Te Taitokerau

Far North district July 2025

Your rates at work

Mō te aha ā tātou reiti?

COUNCIL SERVICES funds a wide range of activities including planning, consents and monitoring; governance and engagement; economic development; customer services, transport, harbour safety and oil pollution control; corporate services and other activities.

LAND AND FRESHWATER MANAGEMENT funds land management activities and activities to improve freshwater quality in local waterways, like erosion control, landowner advice, water quality monitoring and water allocation.

PEST MANAGEMENT funds the development of flood protection infrastructure and other minor river works.

FLOOD INFRASTRUCTURE funds the development of flood protection infrastructure and other minor river works.

EMERGENCY AND HAZARD MANAGEMENT funds Civil Defence emergency management, natural hazard management activities and climate change adaptation planning activities.

REGIONAL RESCUE SERVICES provides funding for organisations whose primary purpose is to save lives that are in immediate or critical danger, or to respond to serious injury.

REGIONAL SPORTING FACILITIES contributes funding towards development of sporting facilities of regional benefit.

REGIONAL ECONOMIC DEVELOPMENT funds activities which support economic wellbeing in Northland and community infrastructure.

FAR NORTH TRANSPORT helps fund the Far North district's public bus service and other public transport services.

AWANUI RIVER MANAGEMENT funds works on the Awanui River flood management scheme.

KĀEO-WHANGAROA RIVERS MANAGEMENT funds flood scheme works in Kāeo and Tauranga Bay, and minor river maintenance works in the area.

TAUMĀRERE RIVERS MANAGEMENT funds flood scheme works in the Taumarere catchment to reduce flooding at Otiria and Moerewa and Kawakawa.

Find out more

Information on instalment dates, penalties and discounts can be found on your rates assessment. To make rates collection easier, Northland Regional Council's policies on the remission and postponement of rates and penalties in the Far North district are consistent with Far North District Council's policies. To view all policies **visit nrc.govt.nz/rates**

Find out more on the regional council's activities and budgets in our Long Term Plan **visit nrc.govt.nz/longtermplan**



Residents survey

He uiuinga whānui o ngā kainoho

We'd love to hear from you about the work we do, what's important to you and how we can do better. Follow the link or scan the QR code to share your views with us.

nrc.govt.nz/residentssurvey



Enrol to vote in the local elections



To enrol, scan the QR code or visit **www.vote.nz/enrol**

Your home Your voice Make it count

For more info on local elections
www.nrc.govt.nz/elections2025