

# SHORTFIN EEL



Dark grey/black with silver tummy

Top and bottom fins almost same length



Big mouth (goes right past its eye!)



Looks like its cousin (the longfin eel) but both its fins are equal length.



Up to 1.2m



Mainly active at night

**Northland**  
REGIONAL COUNCIL  
Te Kaunihera ā rohe o Te Taitokerau

NATIVE FISH - Ika taketake



# LONGFIN EEL



Dark brown, black, grey  
with silver belly



Looks like its little cousin (the shortfin eel) but its top fin is much longer than bottom fin.

## FUN FACT

When slithering  
its skin wrinkles!



Mainly active  
at night



Up to 2m

# KŌARO



Sparkly olive with green-brown blotches and stripes

Long tube-like body



Big front fins



Unlike other whitebait, it has big front fins that point down to help anchor it in fast-flowing water where it likes to live.

Photo credit: [www.doc.govt.nz](http://www.doc.govt.nz)



30cm

Up to 20cm



Mainly active at night

## FUN FACT

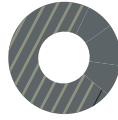
Rare/not often seen in Northland

**Northland**  
REGIONAL COUNCIL   
Te Kaunihera ā rohe o Te Taitokerau

NATIVE FISH - Ika taketake



# BANDED KŌKOPU



Dark, with obvious thin, pale stripes along its sides and back.



A silver mark behind its gills can also help identify it



Mainly active  
at night



30cm

Over 20cm

# INANGA



Silver with a pretty  
amber-olive back and  
many speckles

No scales



Big silver eye

Long, thin body



Looks like – and often confused with –  
the common smelt and is transparent  
(see-through) when young.



30cm

8 - 11cm



Mainly active  
at night

**Northland**  
REGIONAL COUNCIL



Te Kaunihera ā rohe o Te Taitokerau

NATIVE FISH – Ika taketake



# COMMON BULLY

Likes slow-flowing water and lakes

Its top sail-like fin has 7 or 8 spikes



Usually grey-brown to black, with awesomely varied camouflage patterns on its back and sides



Smaller than its cousin the giant bully

## FUN FACT

Distinctive marks that look like cat whiskers under its eyes



Active day and night



30cm

Up to 16cm

# GIANT BULLY

Usually found close to the sea



Dark coloured, often almost black

Cheeks have gold/olive lines



Can be told apart from common bully as its sail-like top fin never has more than 6 spikes.



30cm

Up to 24cm



Mainly active at night

## FUN FACT

It has awesome camouflage with golden specks in it!

**Northland**  
REGIONAL COUNCIL

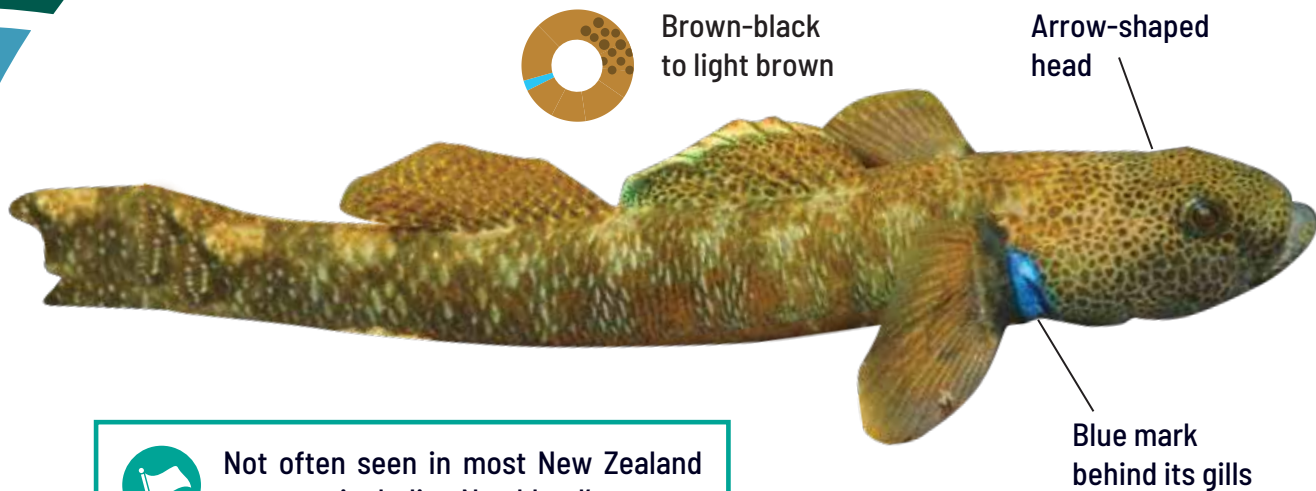
Te Kaunihera ā rohe o Te Taitokerau

NATIVE FISH – Ika taketake





# BLUEGILL BULLY



Not often seen in most New Zealand streams, including Northland's.

Photo credit: Stella McQueen. Wikipedia

## FUN FACT

Spotty face and  
obvious blue mark  
behind its gills



Mainly active  
at night





# REDFIN BULLY



Bronze to grey-brown with camouflage patterning

Males have bright red patterns on their fins and tail



Obvious diagonal stripes on cheeks



30cm

Up to 12cm



Mainly active at night

**Northland**  
REGIONAL COUNCIL



Te Kaunihera ā rohe o Te Taitokerau

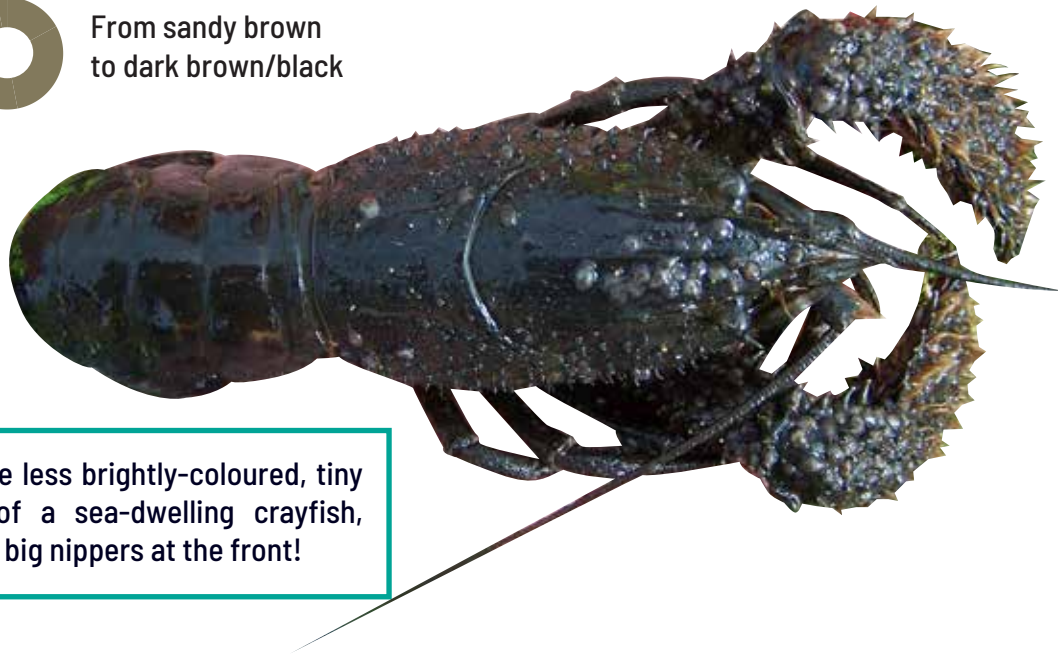
NATIVE FISH - Ika taketake



# FRESHWATER CRAYFISH



From sandy brown to dark brown/black



Looks like less brightly-coloured, tiny version of a sea-dwelling crayfish, including big nippers at the front!

Photo credit: [www.doc.govt.nz](http://www.doc.govt.nz)

**Northland**  
REGIONAL COUNCIL  
Te Kaunihera ā rohe o Te Taitokerau



Mainly active  
at night



30cm

Up to 7cm

# COMMON SMELT



Mostly shiny and silver,  
with a bronze back

V-shaped  
forked tail



Has scales (unlike inanga).  
Transparent (see-through)  
when young.



30cm

Around 12cm



Mainly active  
at night

## FUN FACT

One weird fish;  
smells like cucumber!

**Northland**  
REGIONAL COUNCIL   
Te Kaunihera ā rohe o Te Taitokerau

NATIVE FISH - Ika taketake



# DUNE LAKE GALAXIAS



Almost transparent with pink colour visible through skin near gills

No scales



Big silver eye

Long, thin body



Like inanga, but smaller. Only Kaipara kids will find these as they only live in a few dune lakes around Poutō.

Photo credit: M.Pingram, [www.kaipara.govt.nz](http://www.kaipara.govt.nz)



Mainly active  
at night



30cm

Up to 7cm