



Mangere Catchment Group roundup & year ahead

Natalie Blandford
28 January 2015



Priority Catchment Groups





Upskilling phase

Policy framework, water allocation, water quality



Landuses

Multiple, sometimes conflicting landuses





Sediment from flood flows

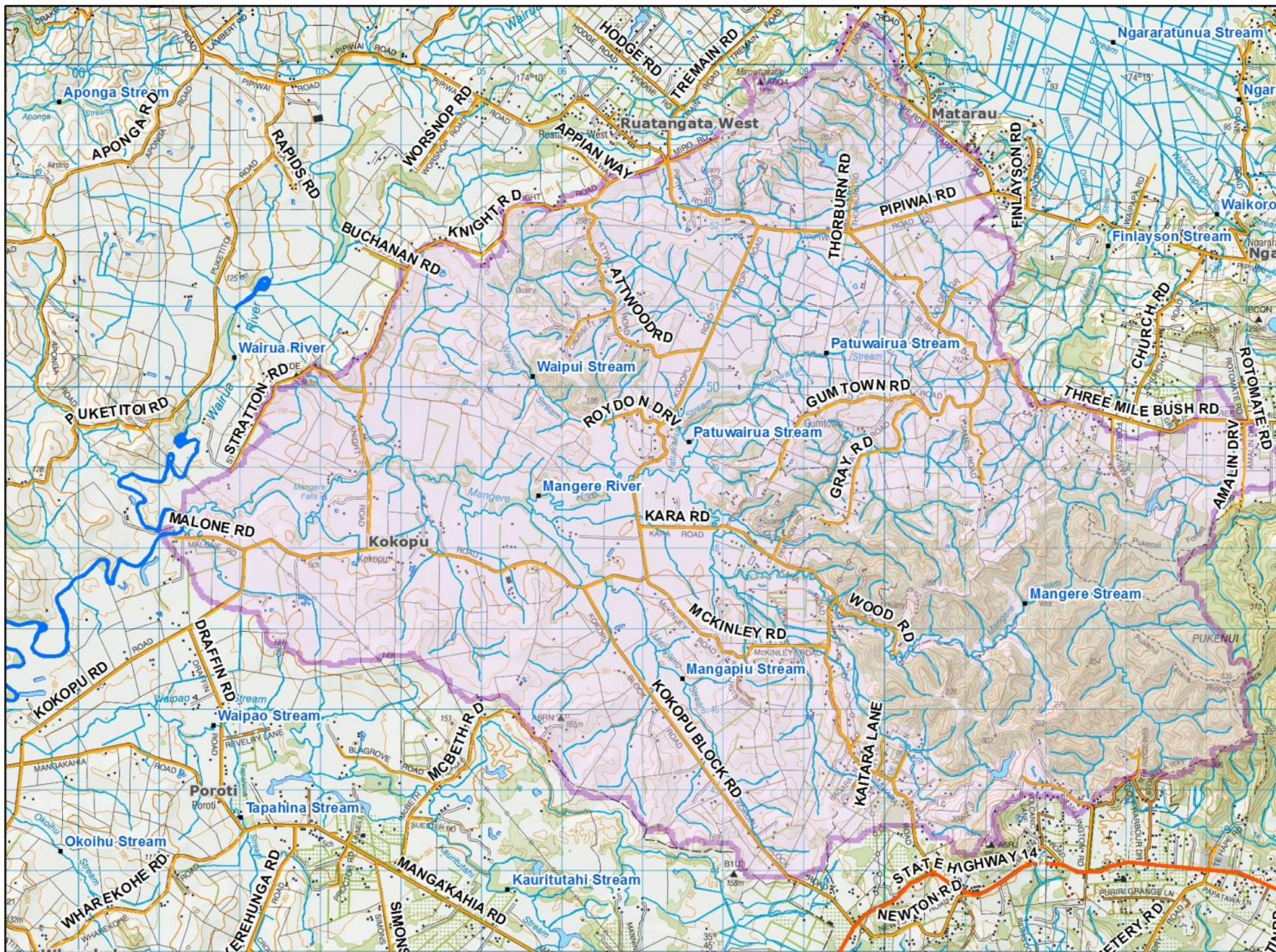
What's achievable with land management, what's natural





Workshopping values

Small groups, categorising to NOF



Mangere CG roundup

- Inception 6 August 2013
- “Subcommittee” status
- Co-chair arrangement with Tania and Royce replaced inaugural chair





Catchment Group

WORKSHOPS



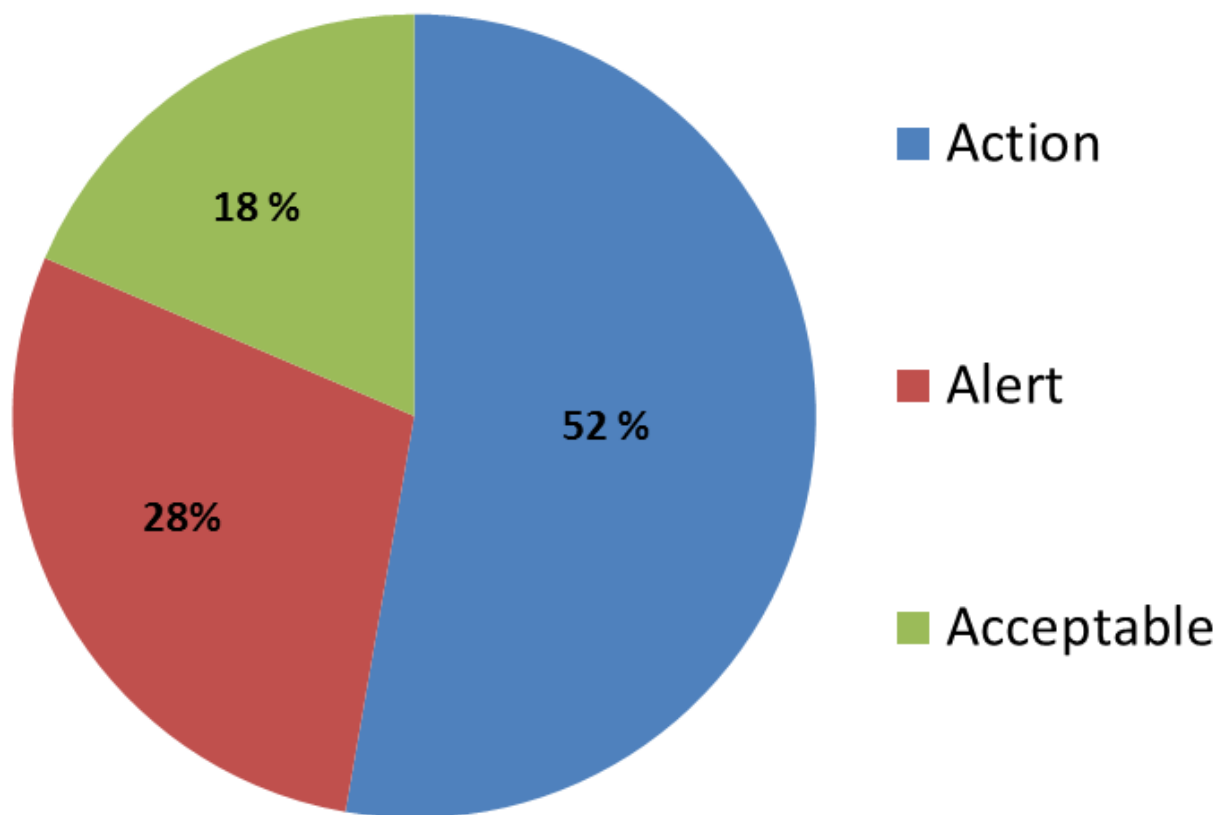
Things we've done so far

- Enhanced freshwater monitoring
- Increased community and horticulture representation on the catchment group
- Riparian planting on Ian's block
- Won regional river award for best reduction in DRP J
- Freshwater uses and values for Mangere
- Stock exclusion and planting on properties

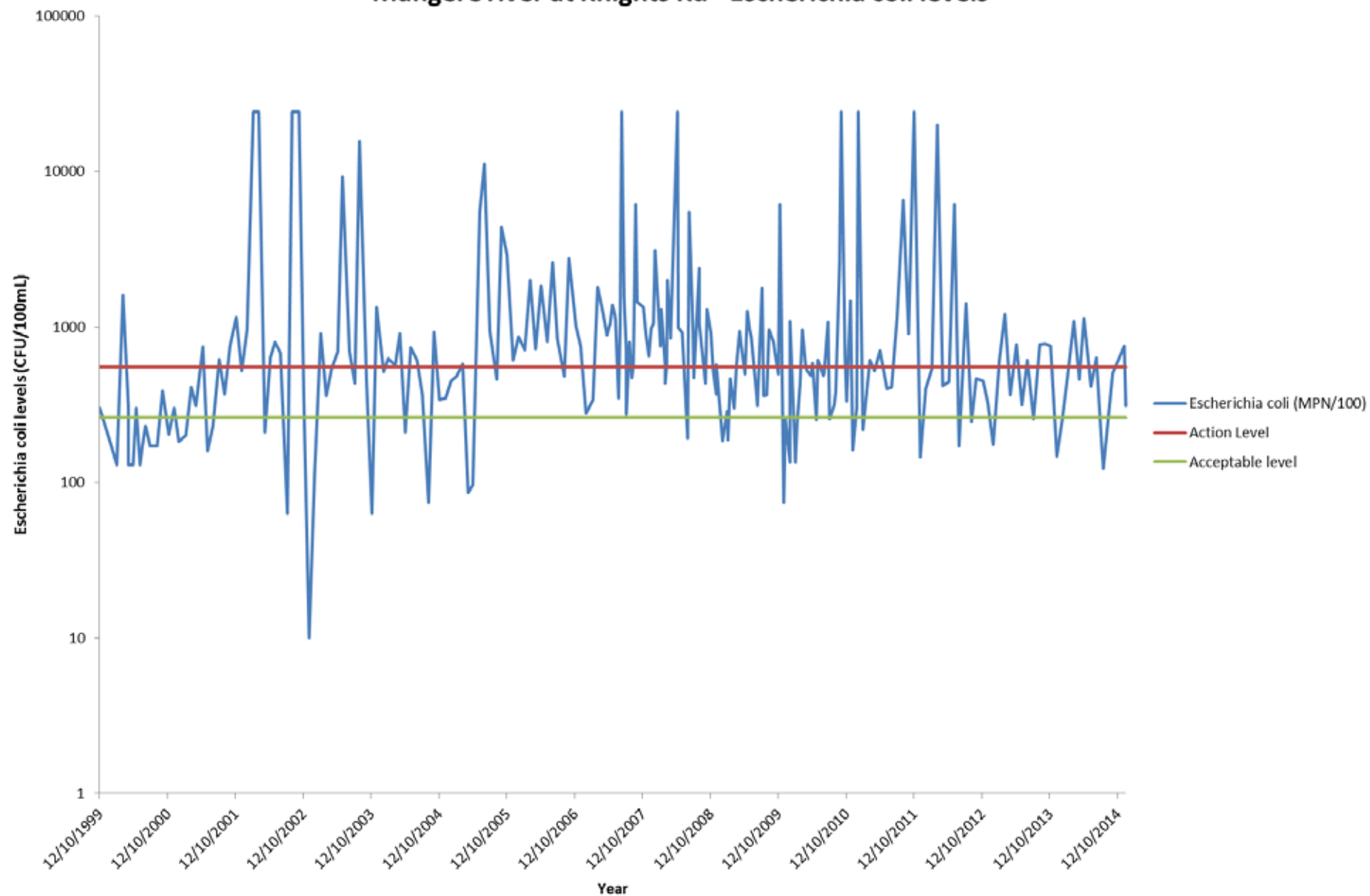
Things we've learned

- Objective setting process under NPS FM
- National Values for freshwater
- Regional plan review
- Rock and soil types in Mangere catchment
- Water quality, including N, P, pathogens and sediment
- DairyNZ's Mangere catchment survey
- Effects of pest fish, land animals, fish passage barriers
- Water allocation

Action status of Mangere river at Knights Rd



Mangere river at Knights Rd - Escherichia coli levels



Things we've considered

- the best way to foster feedback between the group and **member communities of interest**
- a social media presence (facebook)
- Key opportunities for actions we can take as landowners and a community
- Improving water quantity, allocation and use data in the catchment

Catchment Group



FIELDTRIPS AND ACTIONS

Fieldtrips

- Mangere stream health investigation with Kim from Whitebait connection
- Pukenui Forest scheduled for Feb 2015

Mangere Catchment Group

WORKPLAN 2015



Maintaining ecosystem values

Monitoring, pest control, farm water quality improvement plans





Community planting

Species used to restore riparian areas, social cohesion



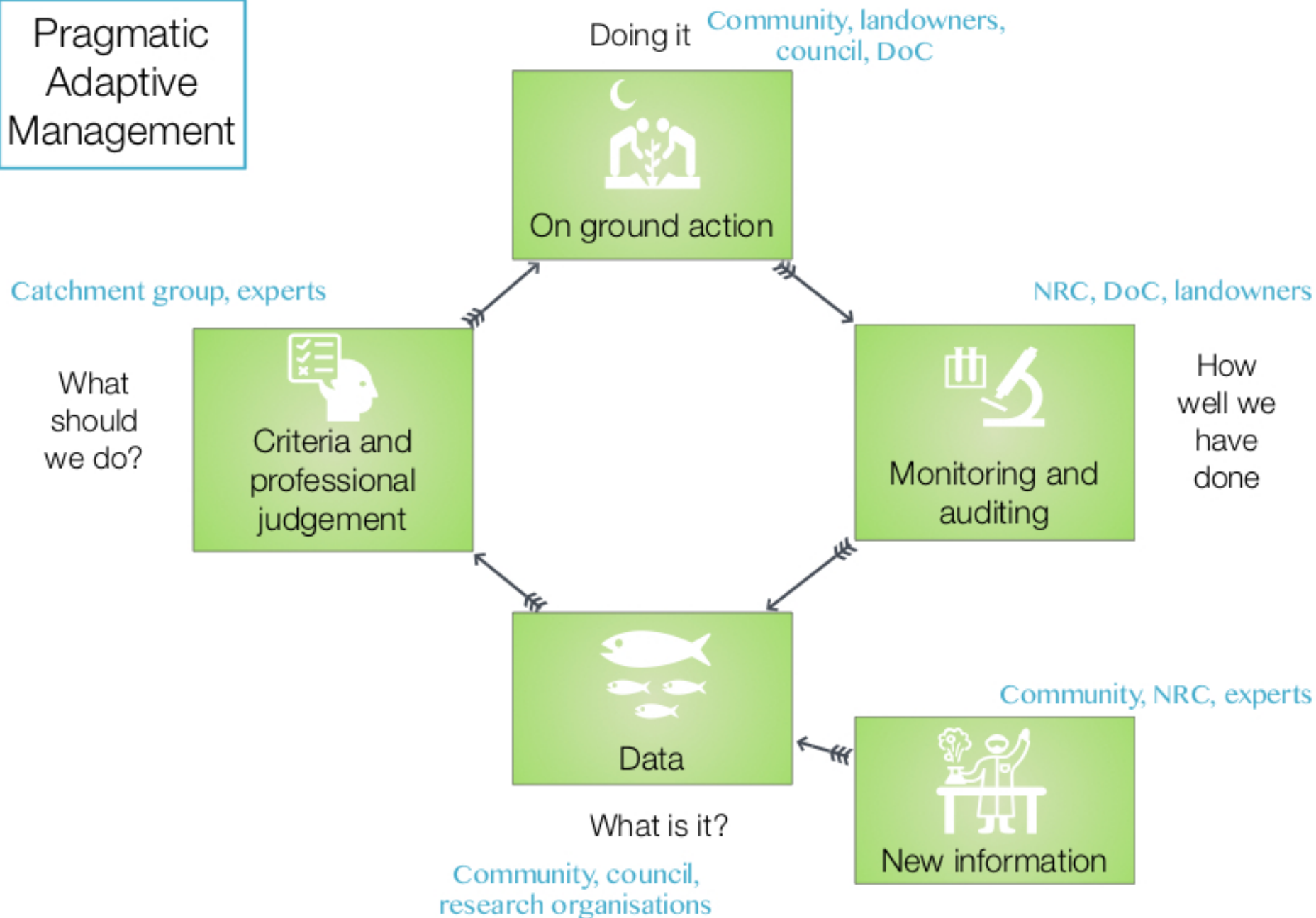


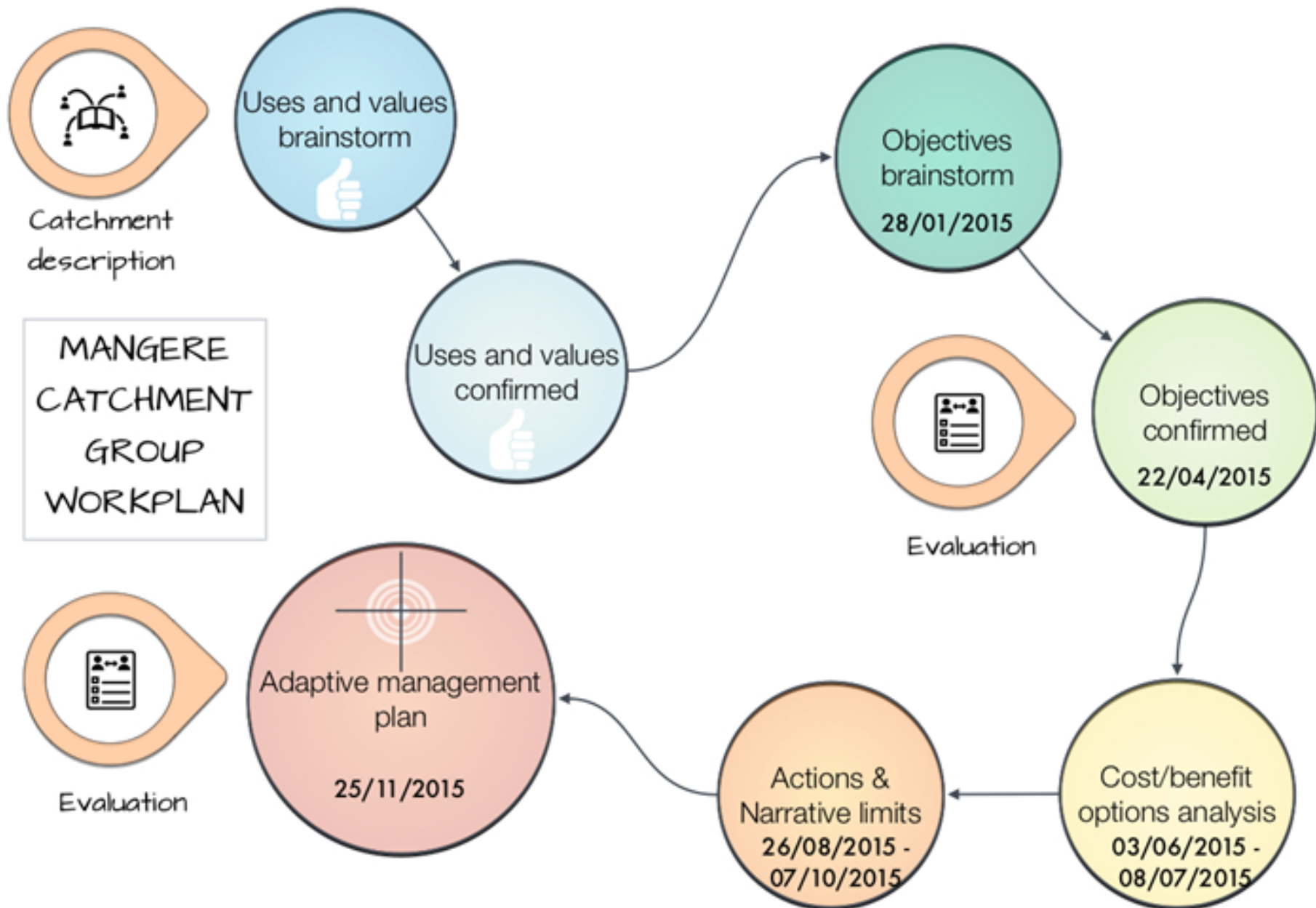
Cultural values

Fieldtrips led by hapu reps, showing impact of freshwater on values

Jan '15

Pragmatic
Adaptive
Management





2015


Wed 28 January 2015	Meeting	Objectives process: matching freshwater values to attributes and desired attribute states (numeric or narrative)
Wed 4 February 2015	Fieldtrip	Pukenui forest: water quality testing; MCI, Actions for Mangere catchment group; Farm Water Quality Improvement Plans.
Wed 11 March 2015	Workshop	Objectives process: matching freshwater values to attributes and desired attribute states (numeric or narrative). Continued.
Wed 22 April 2015	Workshop	Respond to questions raised during objective setting. Process Evaluation
Wed 3 June 2015	Meeting	Options to achieve objectives (including basic CBA)
Wed 8 July 2015	Workshop	Cost benefit analysis: in depth
Wed 26 August 2015	Workshop	Adaptive management plan: Actions
Wed 7 October 2015	Workshop	Adaptive management plan: Narrative limits
Wed 25 November 2015	Meeting	Adaptive management plan finalised. Process Evaluation



Thank you

Natalie Blandford

Project Manager Waiora Northland Water

 09 470 0246

 natalieb@nrc.govt.nz

 www.nrc.govt.nz



**Follow us on
Twitter**

[Twitter.com/NRCexpress](https://twitter.com/NRCexpress)