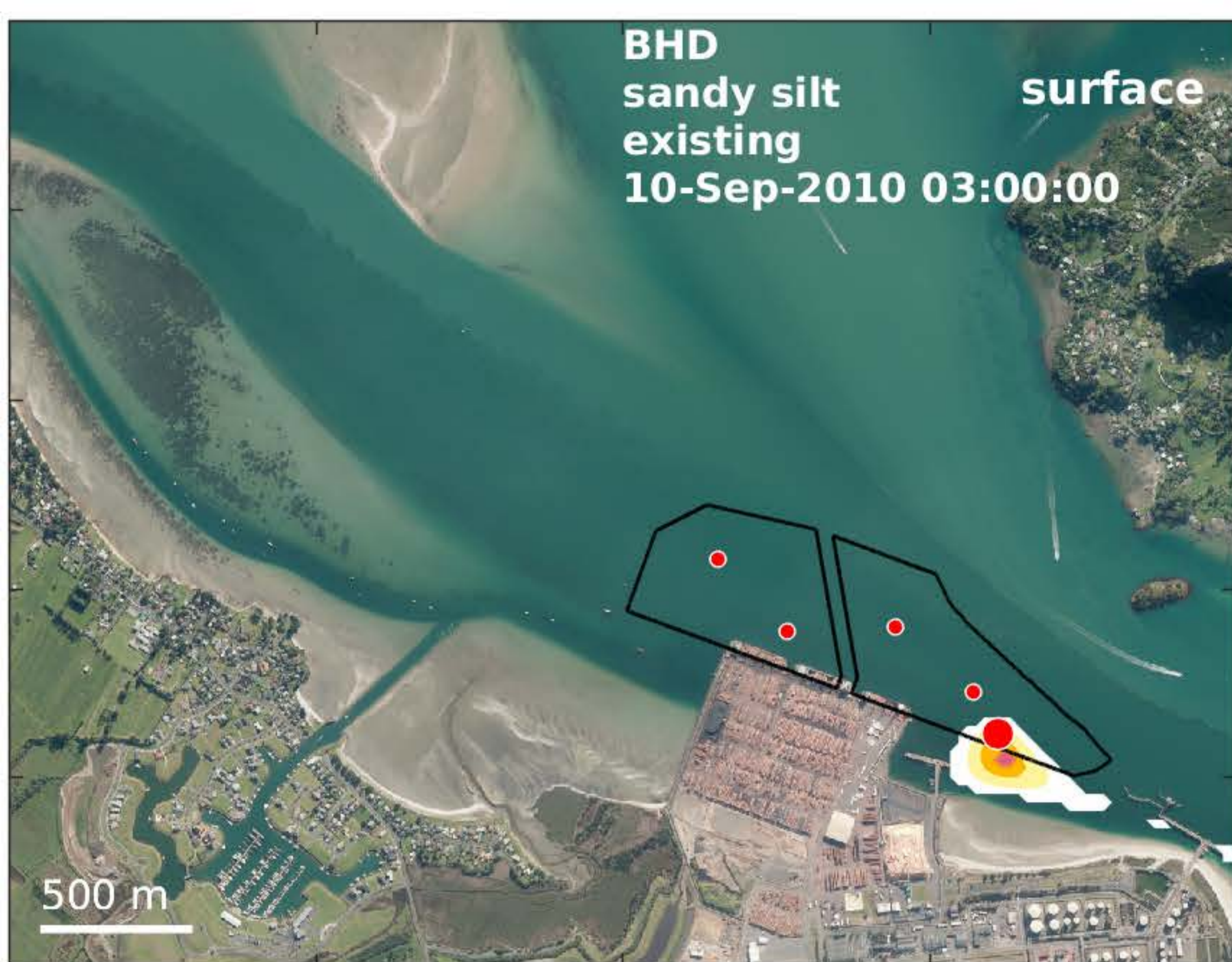


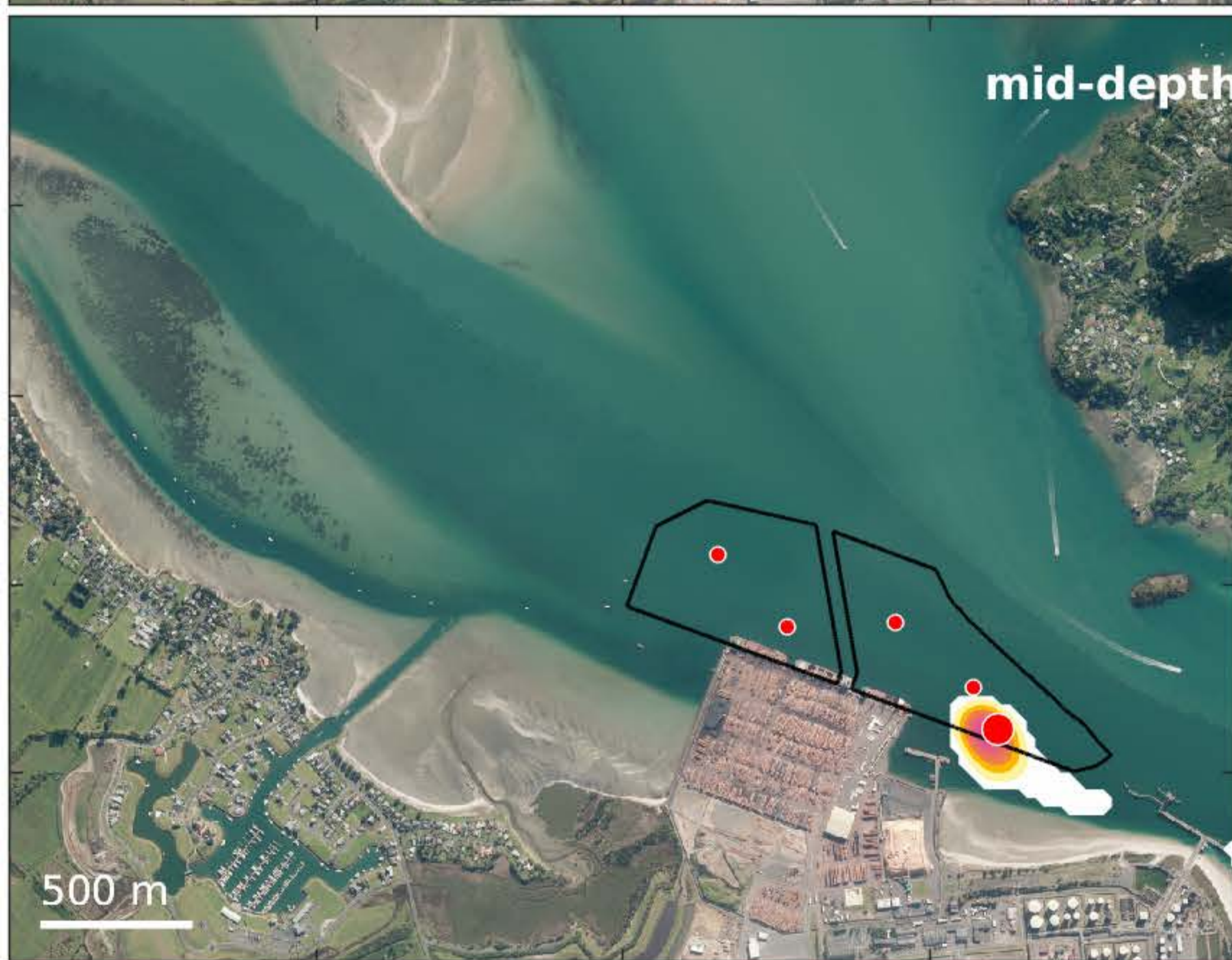
BHD
sandy silt
existing

surface

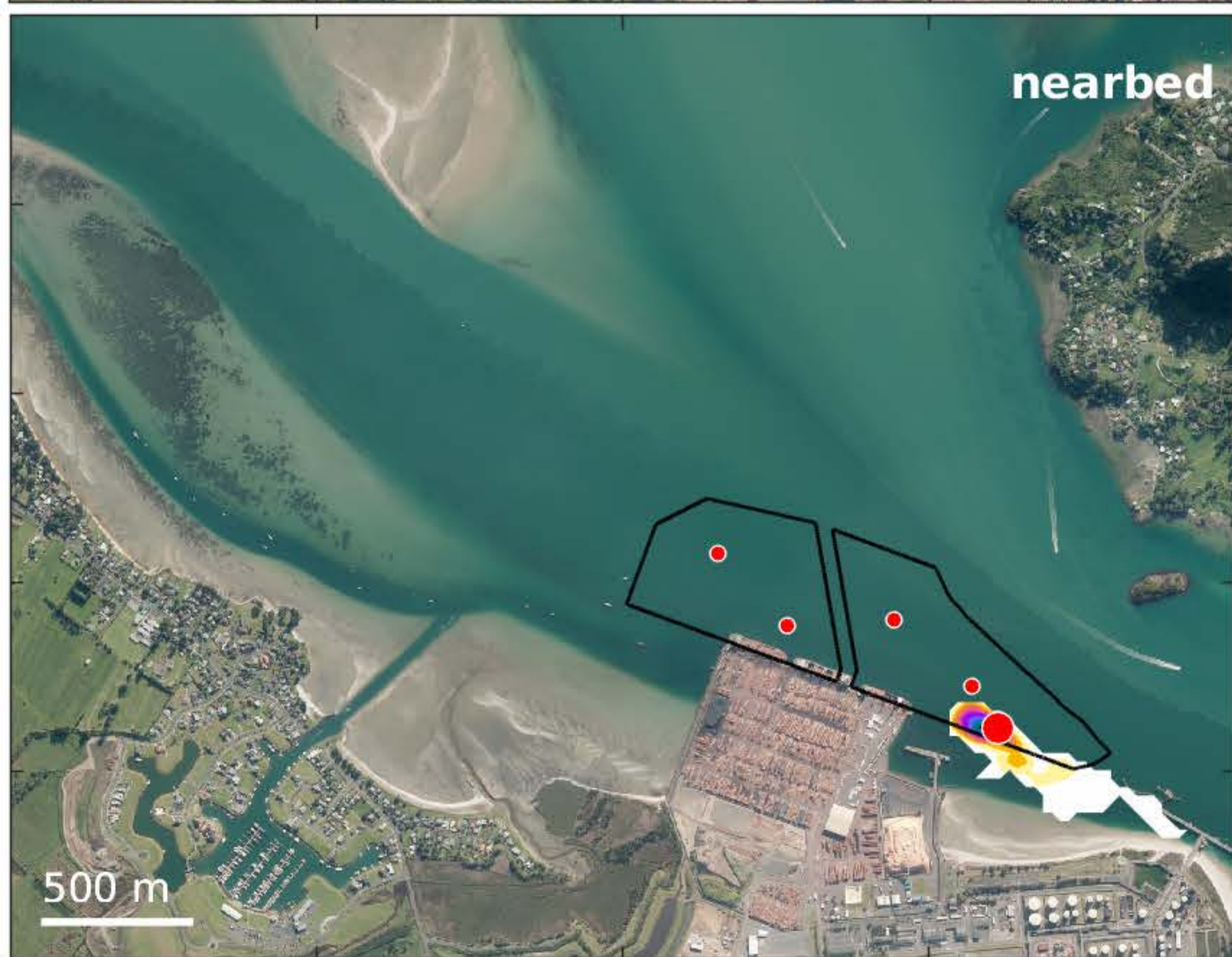
10-Sep-2010 03:00:00

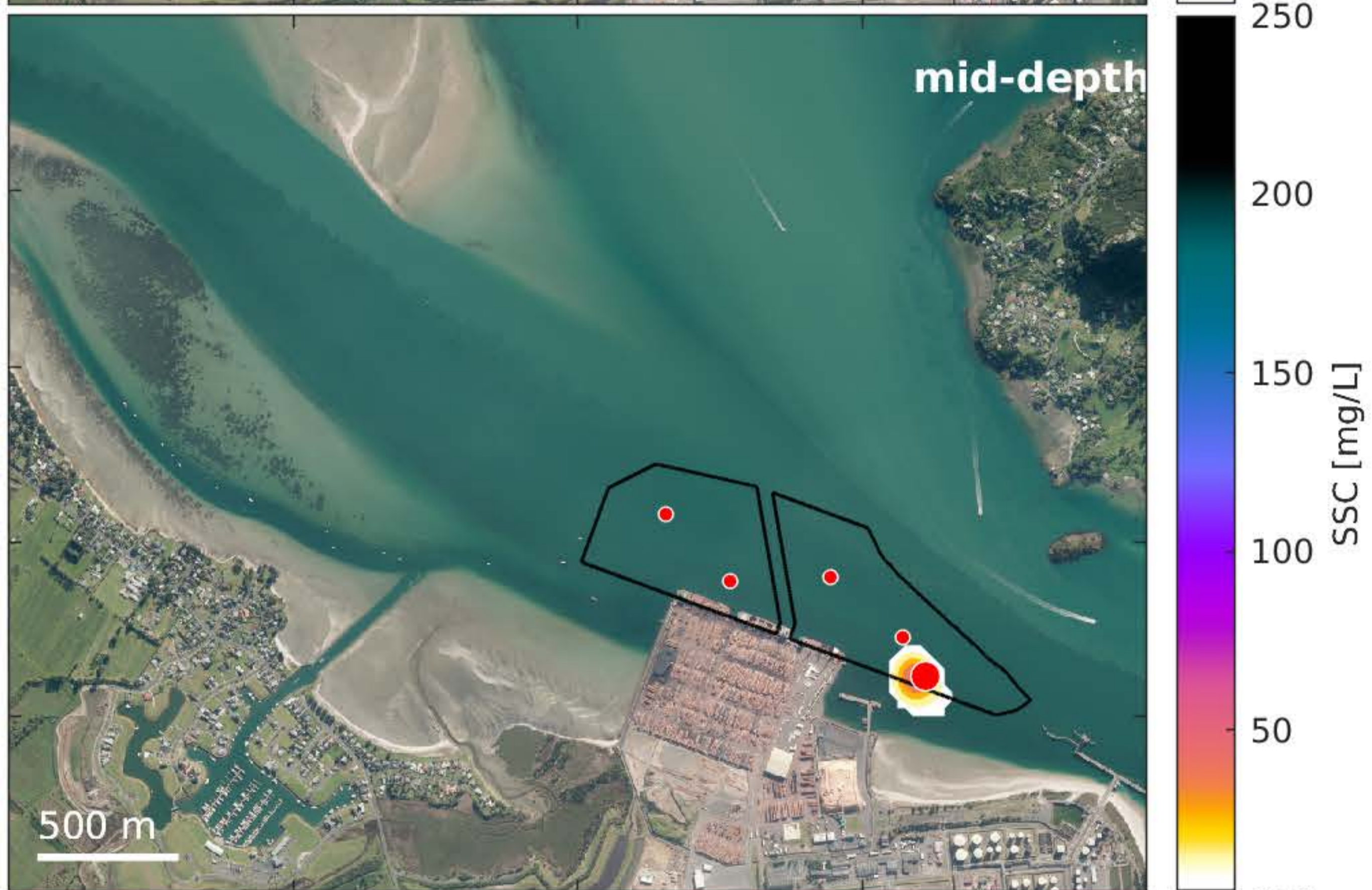
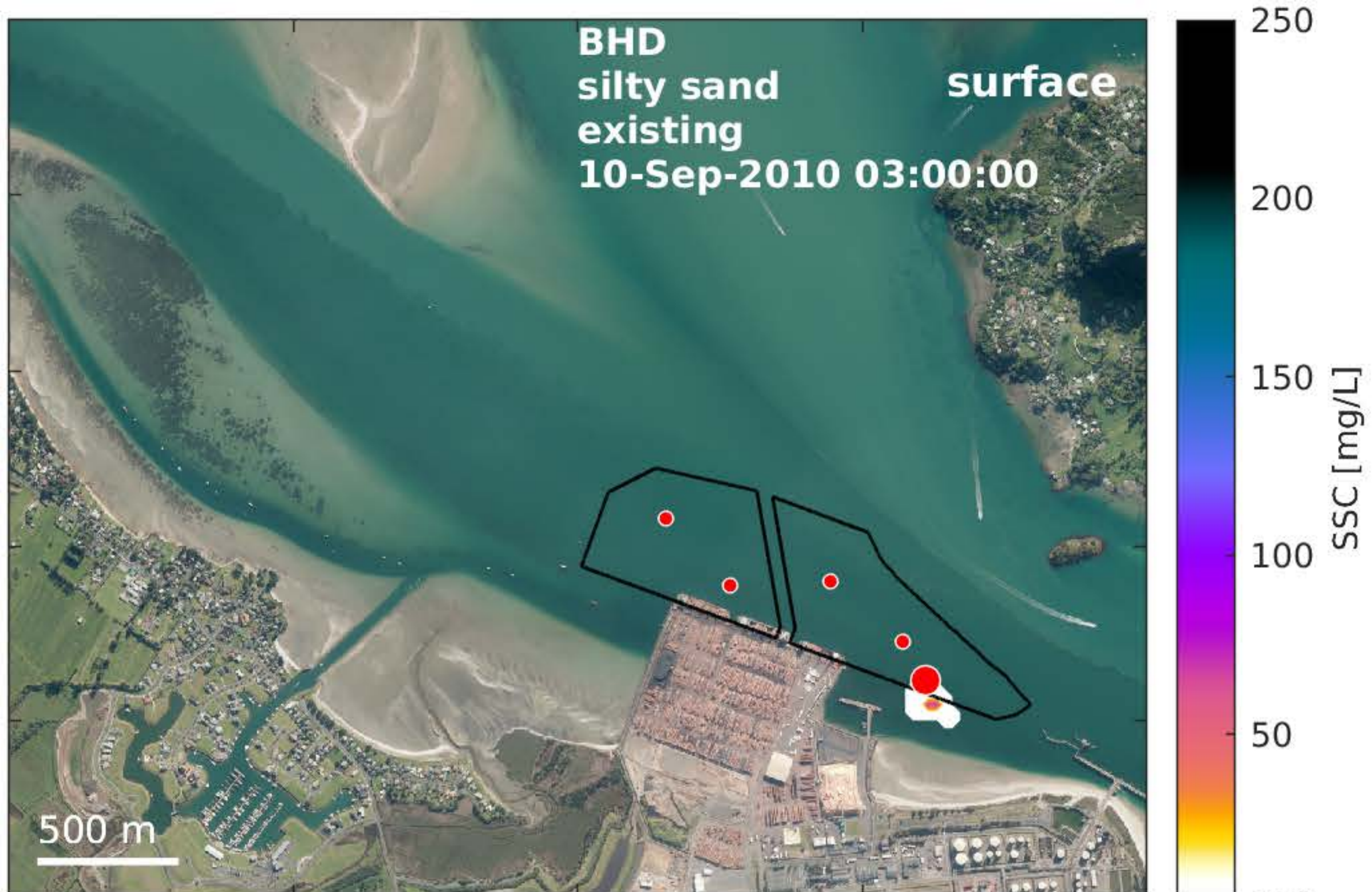


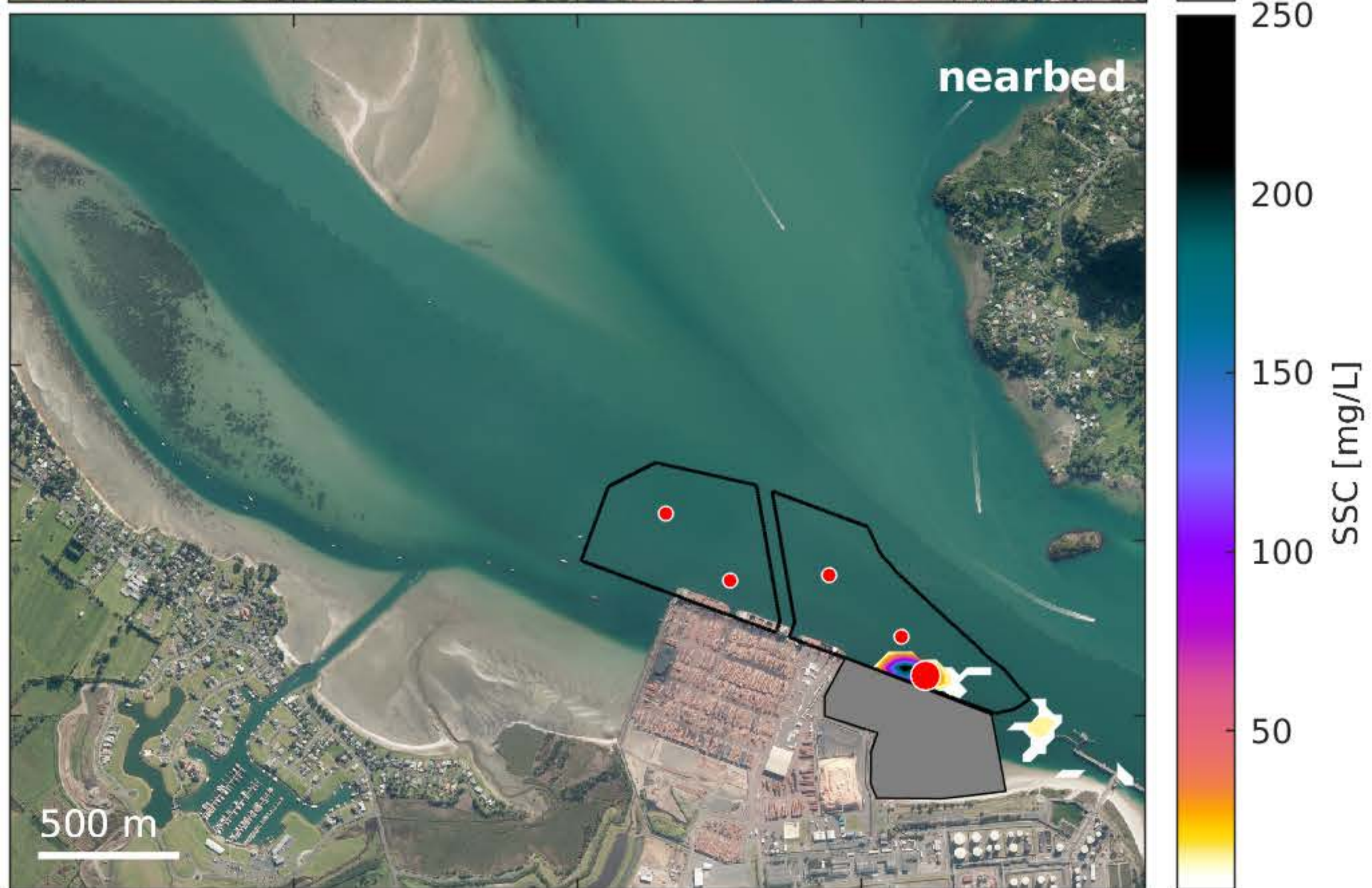
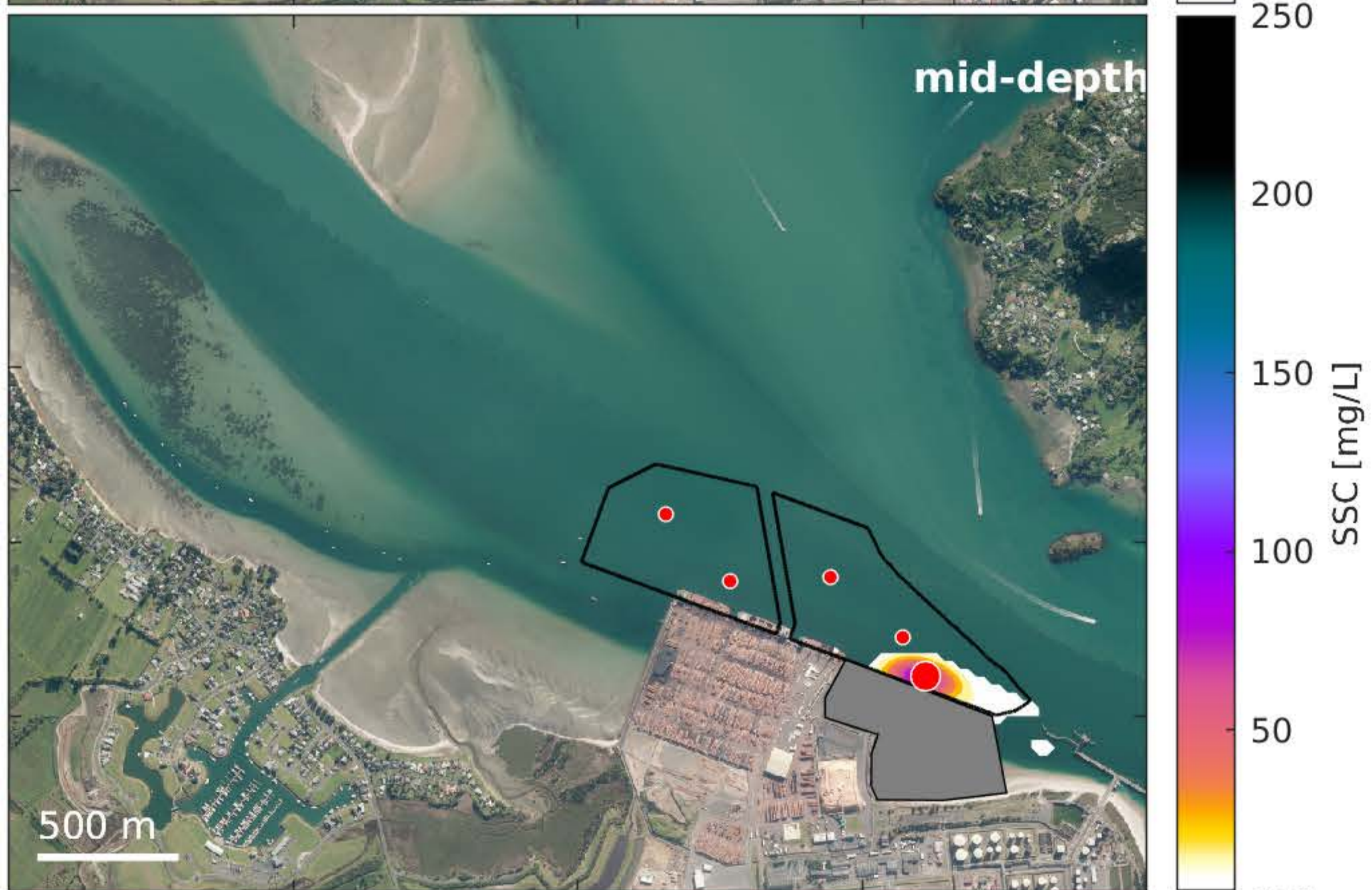
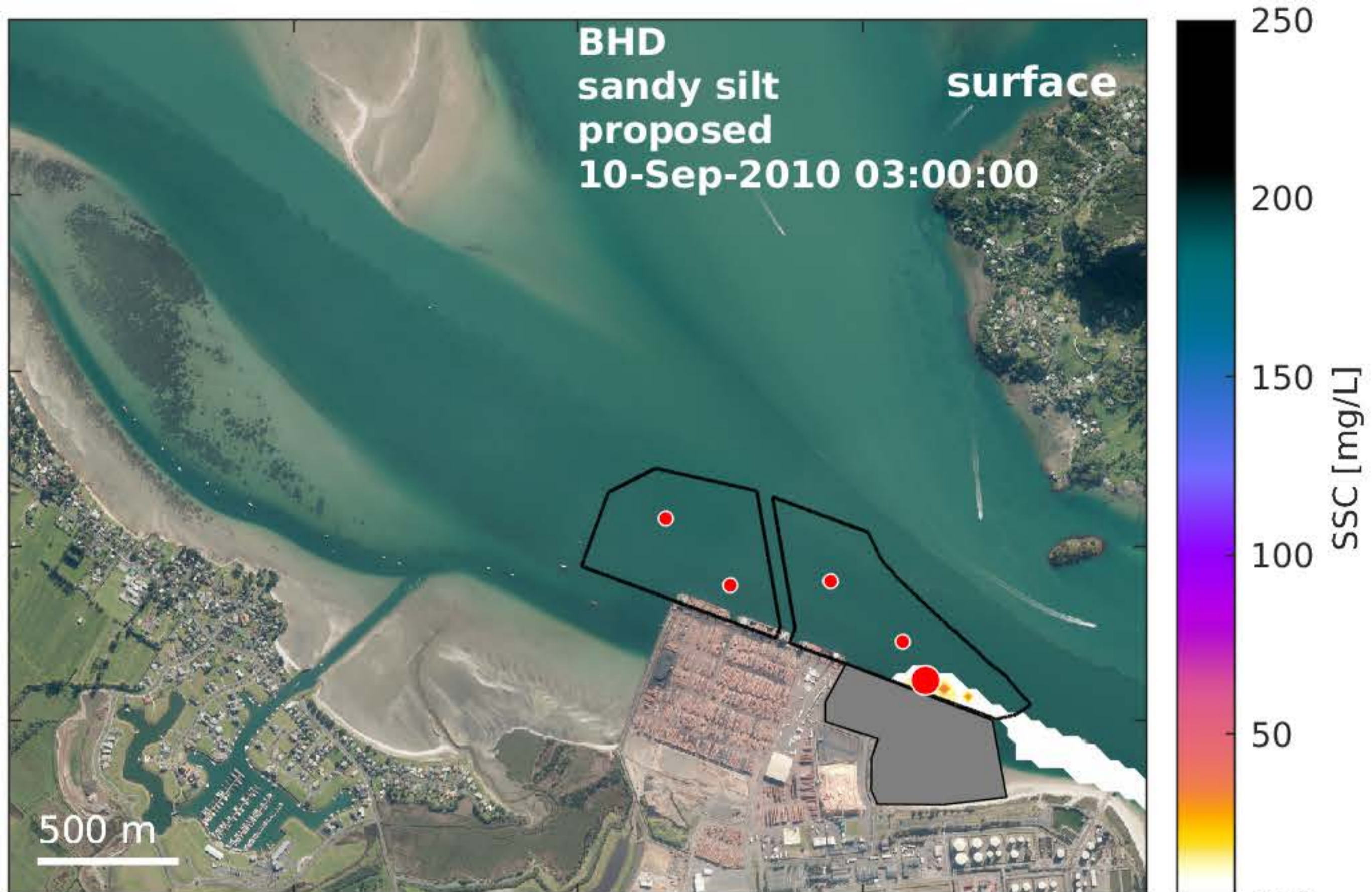
mid-depth



nearbed







BHD
silty sand
proposed

surface

10-Sep-2010 03:00:00

500 m

250

200

150

100

50

SSC [mg/L]

250

200

150

100

50

SSC [mg/L]

250

200

150

100

50

SSC [mg/L]

mid-depth

500 m

nearbed

500 m

