

Hydrology information for the situation report – 09 March 2020

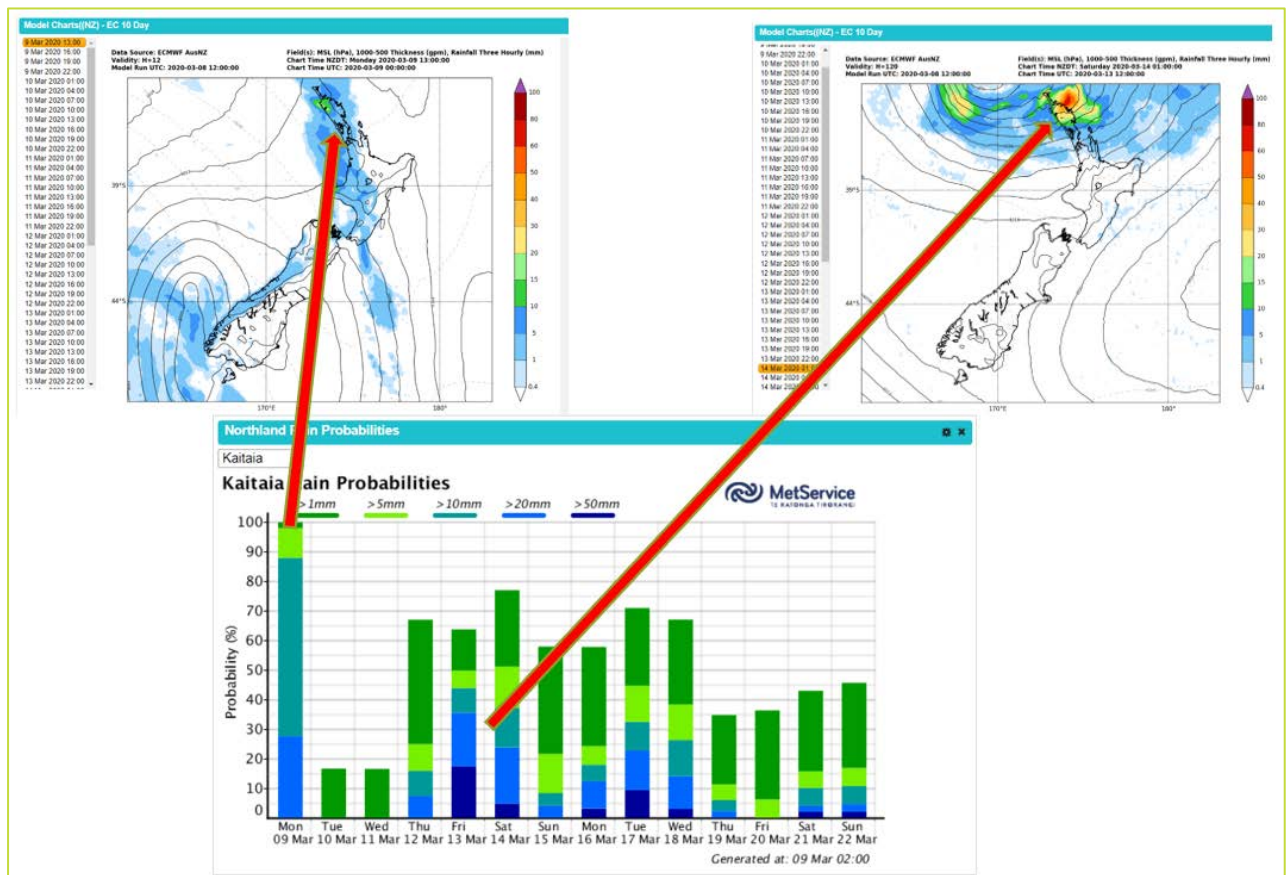
Current weather situation

The remnants of the Fridays frontal band delivered 0-2mm of rain early Saturday morning to parts of the Far North and east coast. As predicted the daily maximum temperatures have dropped down to 22-24 degrees, which will help slow down evapotranspiration.

MetService Outlook

Short term: 3-5 days:

- The northerlies switch to south westerlies, possible isolated thunderstorms 09 marc 2020
- Likely the region will receive 5-10mm of rainfall on Monday afternoon (09 March 2020) as a south west band passes over Northland, with a moderate chance of some thunderstorms delivering 10-25mm/hr.
- The MetService forecast room today indicated the models are showing some rain this Friday & Saturday as a deepens north of New Zealand, the timing and track is uncertain, it is likely the rainfall totals for the two days maybe 20-50mm.

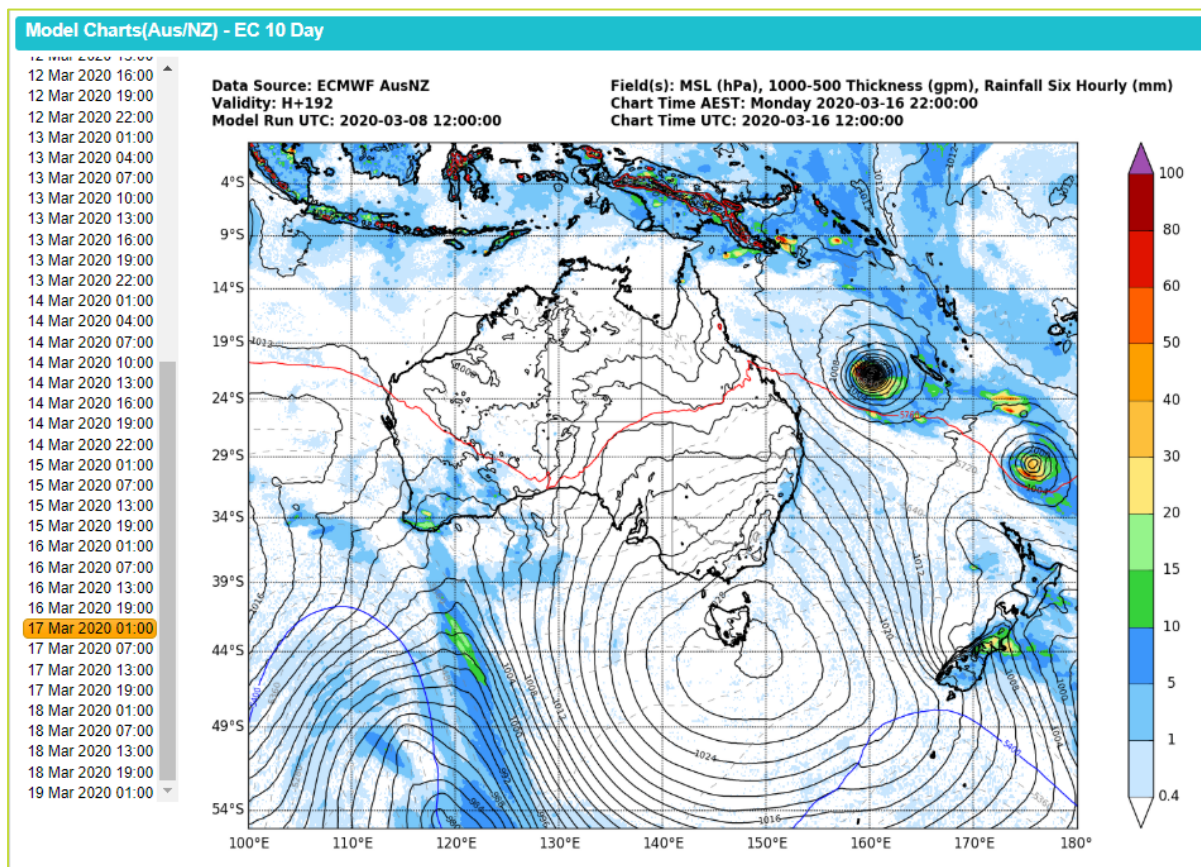


Long range:

Mean Temperature Anomaly Forecasts (in °C)	WEEK ONE Mo 2 - Su 8	WEEK TWO Mo 9 - Su 15	WEEK THREE Mo 16 - Su 22	WEEK FOUR Mo 23 - Su 29	average
Northland	1.8	0.0	0.0	0.3	0.5

Precipitation Anomaly Forecasts (mm)	WEEK ONE Mo 2 - Su 8	WEEK TWO Mo 9 - Su 15	WEEK THREE Mo 16 - Su 22	WEEK FOUR Mo 23 - Su 29	Average
Northland	-1	-1	3	0	0

- The 10x day forecast is showing a TC developing off the coral coast and tracking south east with another low forming in front from 15 March 2020. There is a lot of uncertainty this far out in the forecast, but it is promising that the models now show the low pressure storms heading down and not burning off on the edge of the high pressure systems as previously shown over January and February this year.



Rainfall

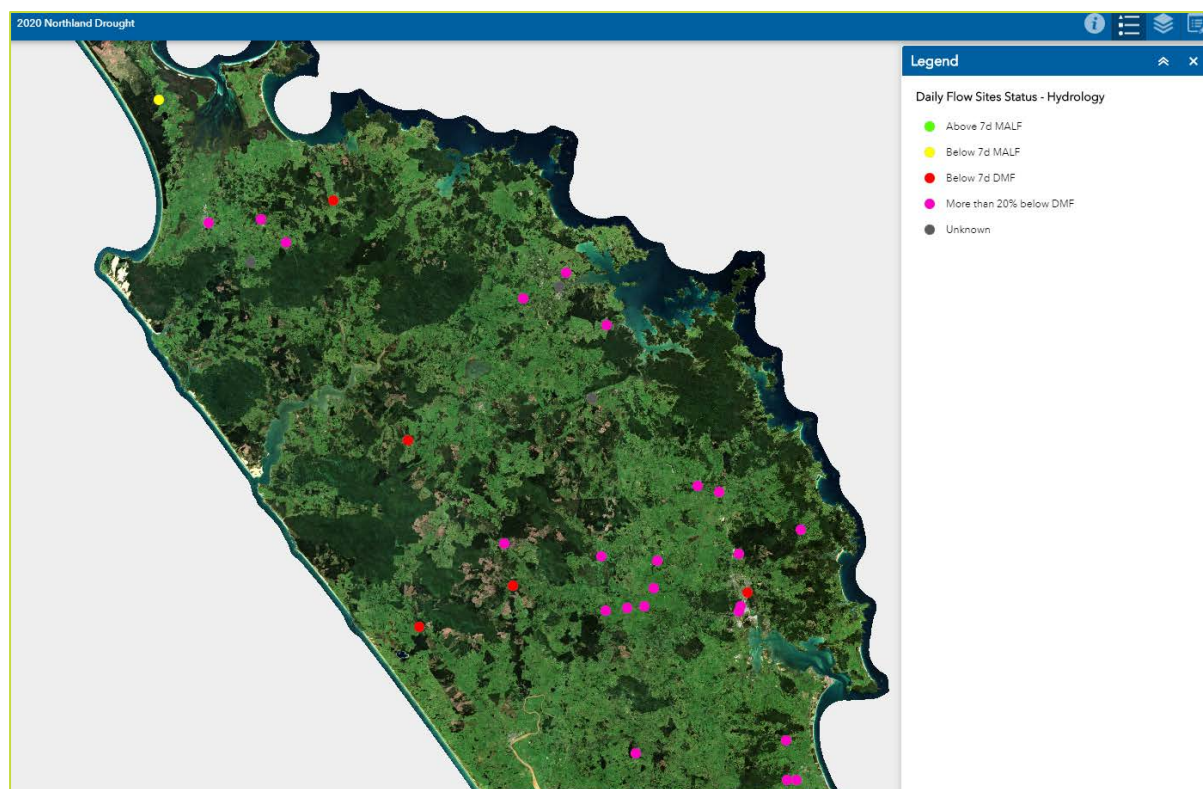
Rainfall was minimal over the weekend. Rainfall accumulation from Friday (06 March 2020) to Monday (09 March 2020). Below are the top three rainfall totals for each district:

FNDC		WDC		KDC	
Kaeo	2.5 mm	Glenbervie	3.0 mm	Dargaville	0.4 mm
Waitangi	2.0 mm	Oakura	2.5 mm	All other gauges =	0.0mm
Ōpua	2.0 mm	Whakapara	1.5 mm		
CENTRES					
Kaitiāia	0.0 mm	Whangārei	0.6 mm	Dargaville	0.4 mm
Kaikohe	3.4 mm				
Kerikeri	0.5 mm				

River flows

Currently only a stream in the Aupouri is above drought flows as 12pm 09 March 2020

Drought flow map:



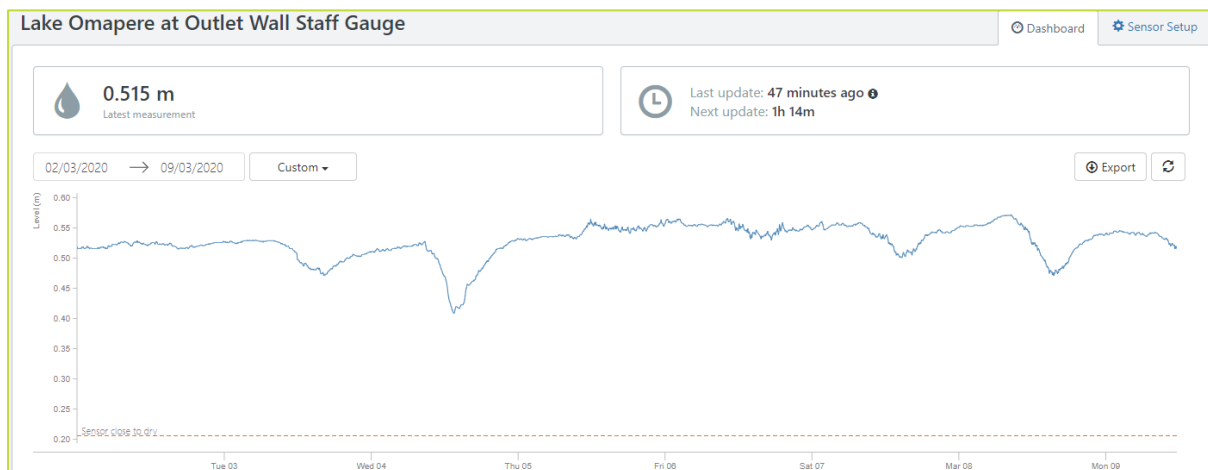
Public water supply river flows (litres per second: l/s) as of 12pm 09 March 2020					
FNDC		WDC		KDC	
Awanui	205	Hatea		Kaihu	
Wairoro	4	Ruakaka			
Waitangi	504	Ahuroa			
Puketotara	131				
Petaka	2.3				

Groundwater levels

Nothing new to report

Lake levels

- The rain over the last 7x days has stabilised the Lake Omapere water levels, as data indicated the lake was dropping at a rate of about 84mm a week.



Soil moisture deficits

Nothing new to report

Appendices:

Observations by Day - Whangarei Aerodrome

Select a month

Show 50 entries

Day	Rainfall (mm/day)	Wind (km/h)			Air Temp (°C)			Road Temp (°C)			Visibility (daily min)	Snow Depth (daily max, cm)
		Direction	Mean	Gust	Min	Max	Mean	Min	Max	Mean		
1 Sun	0.0	ESE	10.2	31.5	18.0	25.5	21.7	-	-	-	10 km	-
2 Mon	0.2	E	16.4	38.9	20.5	22.0	21.3	-	-	-	6 km	-
3 Tue	4.6	NNE	9.4	29.6	19.1	27.8	22.9	-	-	-	2,800 m	-
4 Wed	0.4	SW	10.4	38.9	18.8	27.1	21.9	-	-	-	13 km	-
5 Thu	20.4	ESE	19.4	46.3	17.3	19.7	18.4	-	-	-	1,500 m	-
6 Fri	0.0	E	19.5	46.3	18.3	22.3	19.5	-	-	-	11 km	-
7 Sat	0.6	E	14.3	40.7	17.0	23.1	19.2	-	-	-	8 km	-
8 Sun	0.0	NNE	8.3	31.5	12.8	24.6	18.7	-	-	-	20 km	-
9 Mon	0.0	NNW	4.3	24.1	16.5	22.0	17.9	-	-	-	20 km	-

Showing 1 to 9 of 9 entries