

# REGIONAL REPORT

Issue 37

Special Edition  
August 2016



## HAVE YOUR SAY: DRAFT REGIONAL PLAN



The Draft Regional Plan is our rule book for how Northland's water, soil, air and coast are used and managed. It is set to replace our three existing regional plans that are now over 10 years old. It takes into account some important changes that have happened over the last decade – such as new national direction and policies made by central government.

We have attempted to strike a balance between protecting the things that Northlanders value, like clean water and air, while providing for our important economic activities – farming, horticulture, forestry, tourism and marine enterprise.

The council's Regional Policy Committee invites you to find out more about this important document and to provide feedback so your voice can be heard.

If you live in the Poutō, Mangere, Doubtless Bay, Whangārei Harbour or Waitangi catchments, you may also be affected by additional rules that apply specifically in these areas. Find out more about the new catchment management plans for these areas on Page 4.

Releasing the Draft Regional Plan provides an opportunity for us to 'road-test' the plan before we move into the formal planning process. Your feedback on the draft will help shape the subsequent 'proposed plan', which we hope to notify next year. The timeline below shows where we are currently and the next steps.

### The draft plan may affect you if you:

- Have a resource consent.
- Own livestock that have access to streams, rivers, lakes, wetlands or the sea.
- Have a wetland on your property.
- Take water from a stream, river, lake or a bore.
- Discharge waste water onto land or into water.
- Want to do things in rivers, like build erosion protection, construct culverts or divert streams.
- Carry out earthworks, burn or bury farm waste, or spray weeds.
- Identify as tangata whenua.
- Own a mooring permit.

### The draft plan does not cover:

- Subdivision or new buildings on land – these are handled by district councils.
- Fishing quotas.
- Claims made through the Treaty of Waitangi settlement process.
- Provision of new roads or upgrades to existing roads.

## INDICATIVE TIMELINE



**YOUR FEEDBACK  
IS IMPORTANT.**  
Please let us know  
what you think.

To read the Draft Regional Plan, view maps  
and give feedback, go to:  
[www.nrc.govt.nz/newregionalplan](http://www.nrc.govt.nz/newregionalplan)

More details about ways  
to give feedback are on page 4.  
**FEEDBACK CLOSES:**  
5PM FRIDAY 23 SEPTEMBER 2016

Putting Northland first 0800 002 004

**NORTHLAND  
REGIONAL  
COUNCIL**





This is a snapshot of the key changes being proposed for the Draft Regional Plan. Some key changes relate to managing our region’s water, both the AMOUNT available for public and private use and its QUALITY. A number of changes are also proposed for activities on the coast. Now we’re keen to hear from you – have we got it right? You can read the full plan at: [www.nrc.govt.nz/newregionalplan](http://www.nrc.govt.nz/newregionalplan)

## USING WATER

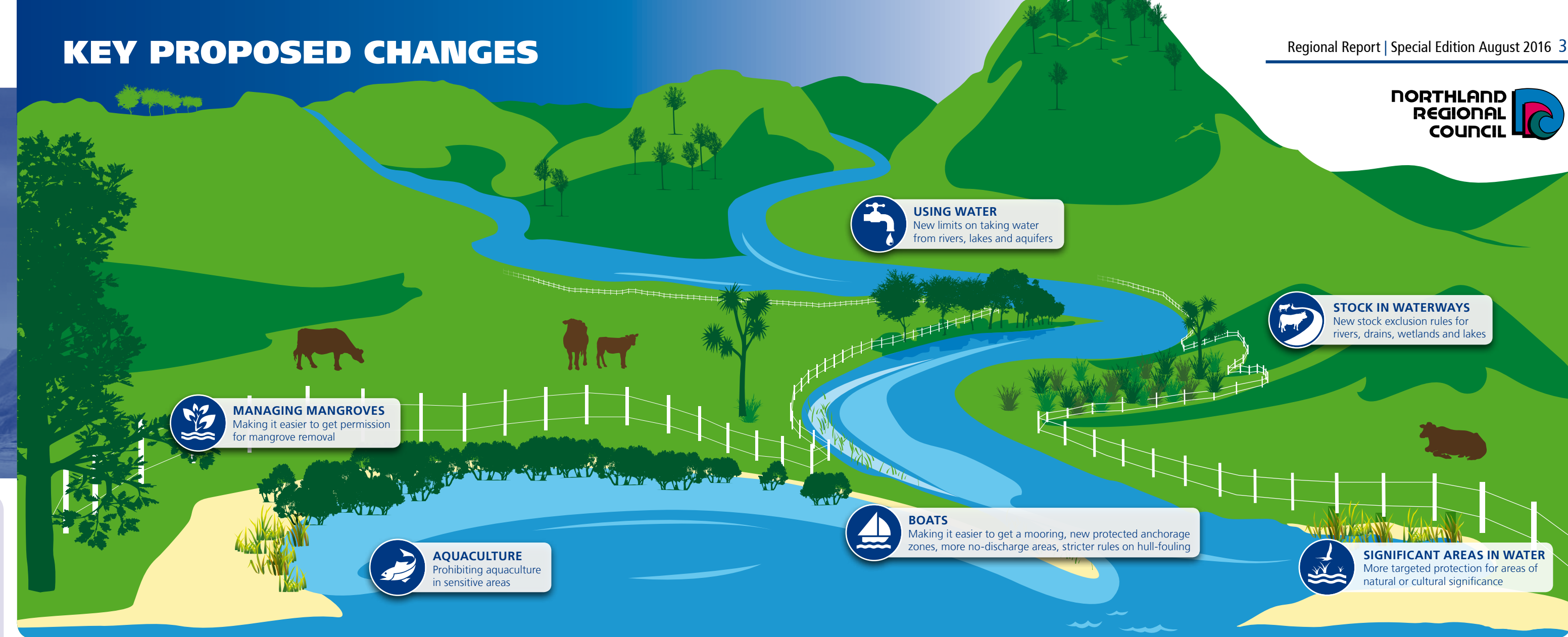
### What we’re proposing ...

- Water takes for stock drinking requirements and domestic water use will still be a permitted activity – you and your animals can use water from any source to drink.
- Anyone can currently take water from rivers at a rate of up to 30 cubic metres per day during winter and 10 cubic metres a day during summer – we’re proposing to change these permitted volumes based on how sensitive the water body is to extraction of water. The proposed new permitted volumes are:

Freshwater management unit*	Maximum volume of water that can be taken per day
Large rivers	50m³
Coastal rivers	5m³
Small inland rivers	10m³
Shallow lakes (less than 10 metres deep)	10m³
Deep lakes (greater than or equal to 10 metres deep)	30m³
Aquifers (volume varies by type)	1m³ to 10m³

- \*We’ve grouped different waterways into categories called ‘management units’ based on a range of measures, including their size, values and sensitivity. They are mapped in the Draft Regional Plan.
- Taking larger volumes of water will generally require a resource consent.
  - We want to make sure the amount of water being taken doesn’t impact on aquatic ecosystems and other water users. To do this, we are proposing to limit the total amount of water that can be taken for use from rivers, lakes and aquifers, and the amount that needs to remain in them.

## KEY PROPOSED CHANGES



## STOCK IN WATERWAYS

We’re proposing a set of rules requiring livestock to be kept out of certain waterways. Excluding livestock from water bodies is widely recognised as a practice to improve water quality for recreation, aquatic species, and food gathering.

Dates when stock must be excluded from waterways\*:

Type of livestock	Permanently flowing rivers and drains greater than 1m wide and 30cm deep	All permanently flowing rivers and drains	Natural wetlands and lakes
Pigs and dairy cows	Date the plan becomes operative (likely around 2020)	1 January 2025	Date the plan becomes operative (likely around 2020)
Beef cattle, dairy support cattle and deer	<b>Hill country areas:</b> no exclusion required <b>Lowland areas:</b> 1 January 2025	<b>Hill country areas:</b> no exclusion required <b>Lowland areas:</b> 1 January 2030	Date the plan becomes operative (likely around 2020)

\*These exclusion dates apply region-wide. However, more stringent rules on stock exclusion may apply in certain catchments. Please refer to the section on catchment plans on the back page for more information.

The rules only require beef cattle, dairy support cattle and deer to be excluded from water bodies in lowland areas (<15° slope) due to the difficulty of fencing hill country areas, and the high costs compared to the environmental benefits. Hill country and lowland areas are mapped in the Draft Regional Plan.



## SIGNIFICANT AREAS IN WATER

We’ve mapped a range of significant areas which have extra restrictions.

- Outstanding and high natural character areas – these are all in water and have little human influence or impact from pest species.
- Outstanding natural features – they include water-based features such as lakes, cliffs, caves, fossil beds, springs, sea arches, waterfalls and volcanic features.
- Significant marine ecological areas – these have high biodiversity values because they contain rare and native plants, birds, fish or mammals.

- Nationally and regionally significant surf breaks – these are widely recognised as being the best places for surfing.
- Outstanding waterbodies – fresh waterbodies that have important recreational, cultural, landscape or ecological values.
- Historic heritage areas and sites in water – these include buildings, structures and archaeological sites.

We have also invited tangata whenua to put forward their places of significance in the new regional plan.

## OUR COAST

### What we’re proposing ...

#### MANAGING MANGROVES

- Making it easier to remove juvenile mangroves by permitting small-scale removal and making it easier to get a consent for large-scale removal of mature mangroves.

#### AQUACULTURE

- Prohibiting aquaculture, in certain sensitive areas.

#### BOATS

- Taking a stricter approach to preventing the spread of marine pests by requiring vessel hulls to be kept clean.
- Increasing the areas where vessel sewage is not allowed to be discharged.
- Introducing protected anchorage zones to ensure vessels have the space they need to shelter in bad weather.
- Permitting new moorings in mooring zones – currently you need to get a resource consent.

## OTHER PROPOSED CHANGES

#### AIR QUALITY

- Stricter notification requirements for agricultural spraying and burn-offs.
- Allowing agricultural bale wrap to be burnt – at present you need a consent to do this.

#### TANGATA WHENUA

- Protecting places of significance in water identified by tangata whenua.
- Providing direction on when tangata whenua need to be consulted in the resource consenting process.

#### NATURAL HAZARDS

You’ll need to get resource consent from us:

- For earthworks or structures that divert flood flows onto neighbouring properties.
- To replace buildings that have been materially damaged by natural hazards (like floods or erosion) in high risk coastal and flood hazard areas; and
- If you want to construct a seawall or other ‘hard protection’ structure, both in coastal waters or on dry land.



# OUR CATCHMENTS

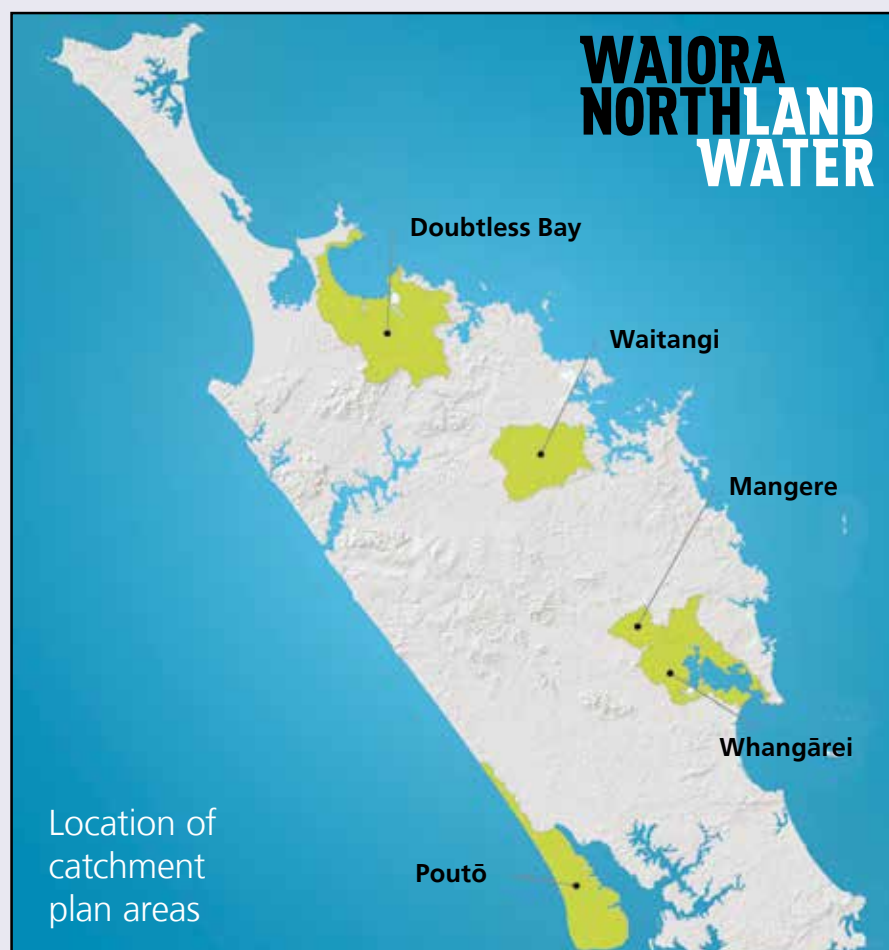
We're taking a different approach to managing water in five of Northland's catchments – Doubtless Bay, Poutō, Waitangi, Whangārei and Mangere. In these catchments we're tailoring the way fresh water is managed to address issues of particular concern in these communities.

Catchment groups were formed from community, industry and tangata whenua representatives with an interest in the catchment. They have developed draft catchment plans that address fresh water-related issues.

The draft catchment plans contain rules that apply in addition to (or instead of) those in the Draft Regional Plan, plus a variety of non-regulatory methods, such as more research, or actions to improve the state of fresh water.

To find out more about the catchment plans and have your say, go to:

[www.nrc.govt.nz/waioarafeedback](http://www.nrc.govt.nz/waioarafeedback)



## COME TO A DROP-IN SESSION

You are invited to our drop-in sessions throughout the region in August and September, where Northland Regional Council staff will be available to answer questions on the Draft Regional Plan and Draft Catchment Plans.

### Sessions covering the Draft Regional Plan and catchment plans:

- Kaitāia Te Ahu Centre, 2pm-7pm, Wednesday 24 August
- Kerikeri Turner Centre, 2pm-7pm, Thursday 25 August
- Whangārei, Northland Regional Council Offices, 36 Water Street, 2pm-7pm, Tuesday 30 August
- Kaikohe RSA, 2pm-7pm, Wednesday 31 August
- Dargaville Town Hall, 2pm-7pm, Tuesday 6 September
- Kaiwaka War Memorial Hall, 2pm-7pm, Wednesday 7 September

### Sessions covering catchment plans only:

- Mangere Catchment – Kara Kokopu Hall, 1pm-4pm, Saturday 13 August
- Doubtless Bay Catchment – Mangonui market at Christian Centre, 9am-1pm, Saturday 27 August
- Waitangi Catchment – Pakaraka Hall, 1pm-4pm, Sunday 11 September and 6pm-9pm, Monday 12 September
- Whangārei Harbour Catchment – Northland Regional Council offices, 36 Water Street, 8am-11am, Saturday 17 September
- Poutō Lakes Catchment – Poutō Hall, 10am-2pm, Tuesday 20 September

### HOW TO SEND US YOUR FEEDBACK

- Use our online portal: [www.nrc.govt.nz/newregionalplan](http://www.nrc.govt.nz/newregionalplan)
- Write to: 'Draft Regional Plan Feedback', Private Bag 9021, Whangārei Mail Centre, Whangārei 0148
- Email: [mailroom@nrc.govt.nz](mailto:mailroom@nrc.govt.nz)

### HOW TO CONTACT US

- Visit us at our offices: Whangārei, Ōpua, Kaitāia and Dargaville
- Freephone: 0800 002 004
- Email: [mailroom@nrc.govt.nz](mailto:mailroom@nrc.govt.nz)

**FEEDBACK CLOSSES 5PM FRIDAY 23 SEPTEMBER 2016**

