

# Hydrology information for the situation report – 02 March 2020

## Current weather situation

The dry weather continues across the region, with light rain on 02 March 2020 delivering about 2mm for parts of the region.

Daily maximum temperatures ranging from 26-28 degrees.

## MetService outlook

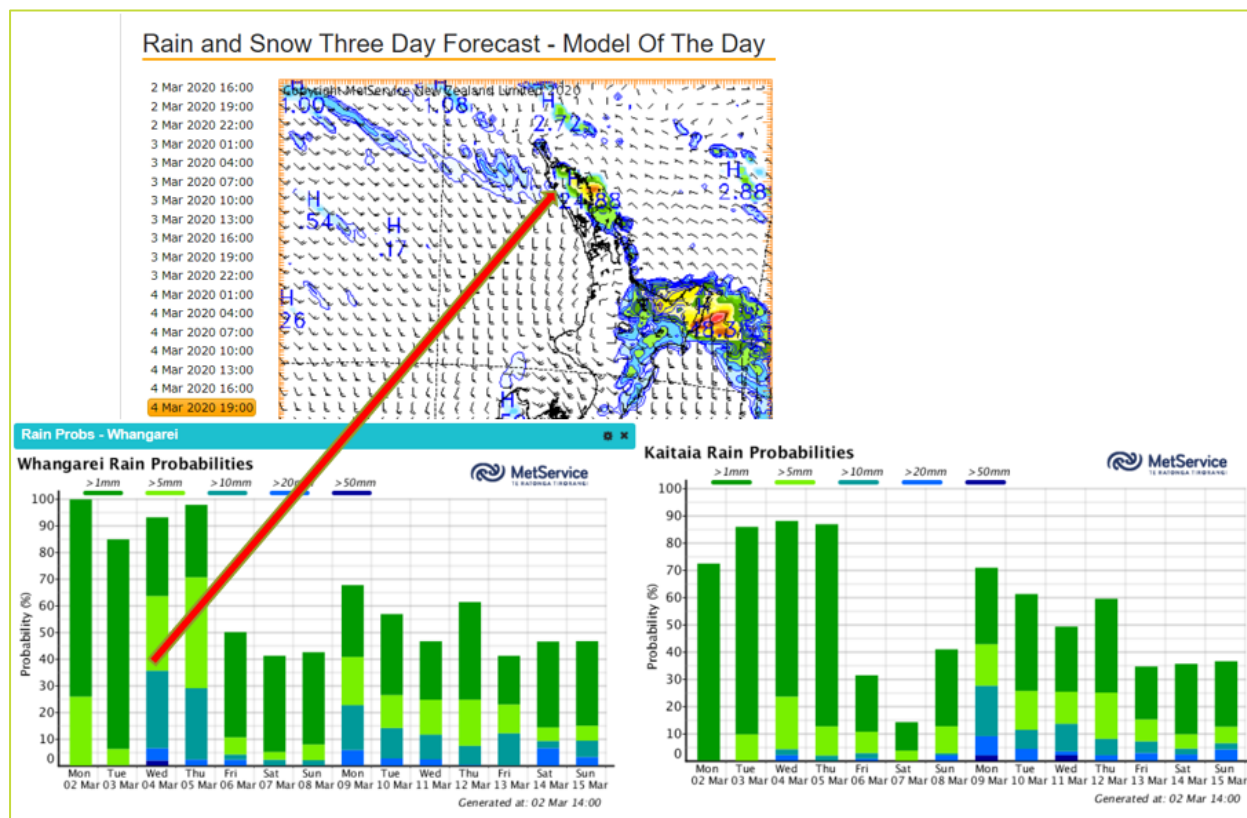
Long range:

**Nothing new to report.**

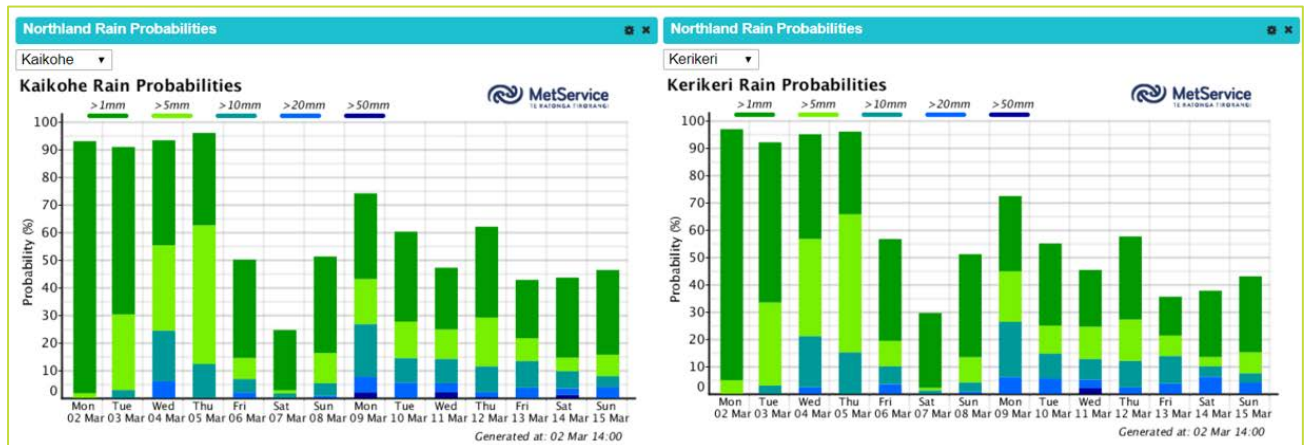
Short term: 3-5 days:

- 10-20mm of rain is predicted for 04 March, south from the Bay of Islands down to Whangārei, the convective showers forecast to be very localised.
- Winds mostly coming from the east and north.
- Daily maximum temperatures predicted at 23-25 degrees.

### 02 March 2020 three day forecast

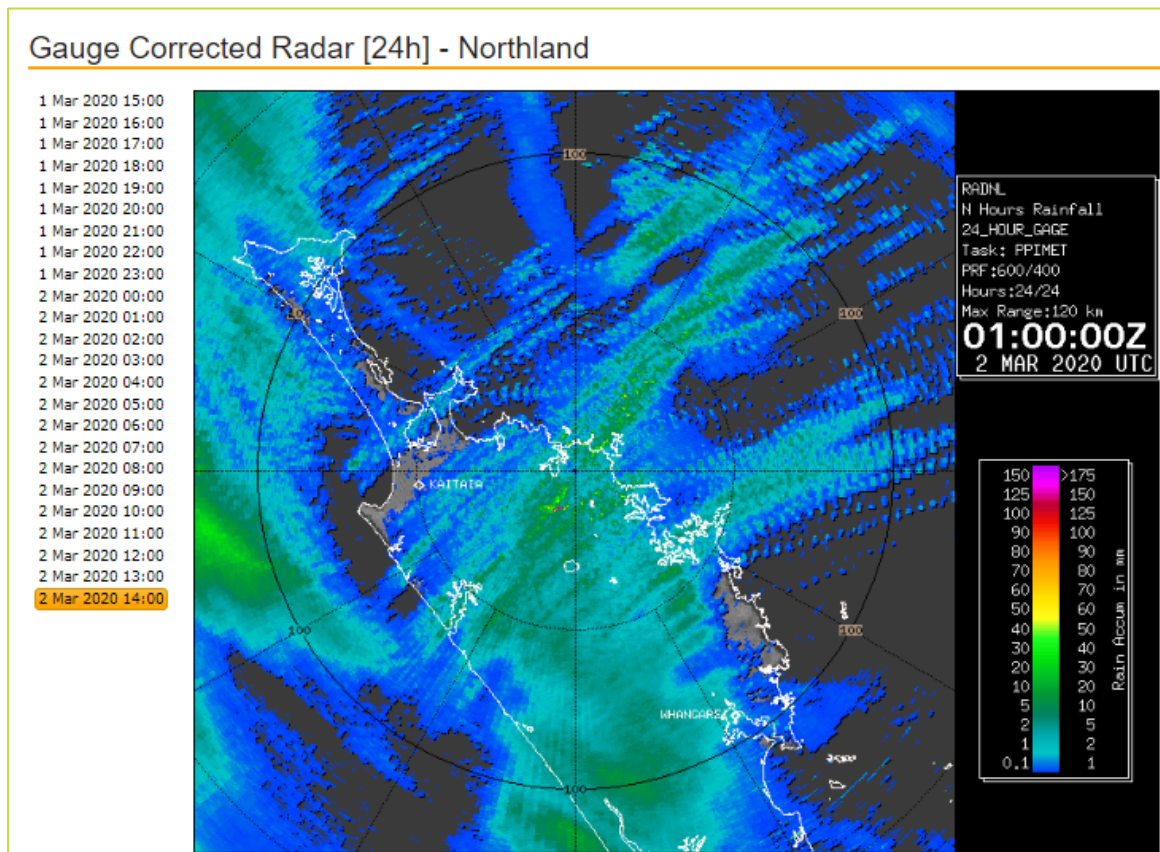


## Rain probabilities



## Rainfall

The radar image below shows the rainfall accumulated over the last 24 hours from 2pm Monday afternoon (02/03/2020), most areas receiving 0-2mm, the Towai catchment getting up to 9.5mm.



Over the period from Friday to Monday (28/02/2020 - 02/03/2020), most areas received 0-5mm of rain, below are the top three rainfall totals for each district:

FNDC		WDC		KDC	
Towai	9.5mm	Opouteke	14.0mm	Waima	2.5mm
Waitangi	4.5mm	Waipao	3.5mm	Paparoas	2.5mm
Otiria	2.0mm	Waikakapo	3.0mm	Waimamaku	1.5mm
CENTRES					
Kaitiāia	0mm	Whangārei	0mm	Dargaville	0mm
Kaikohe	0mm				
Kerikeri	6.5mm				

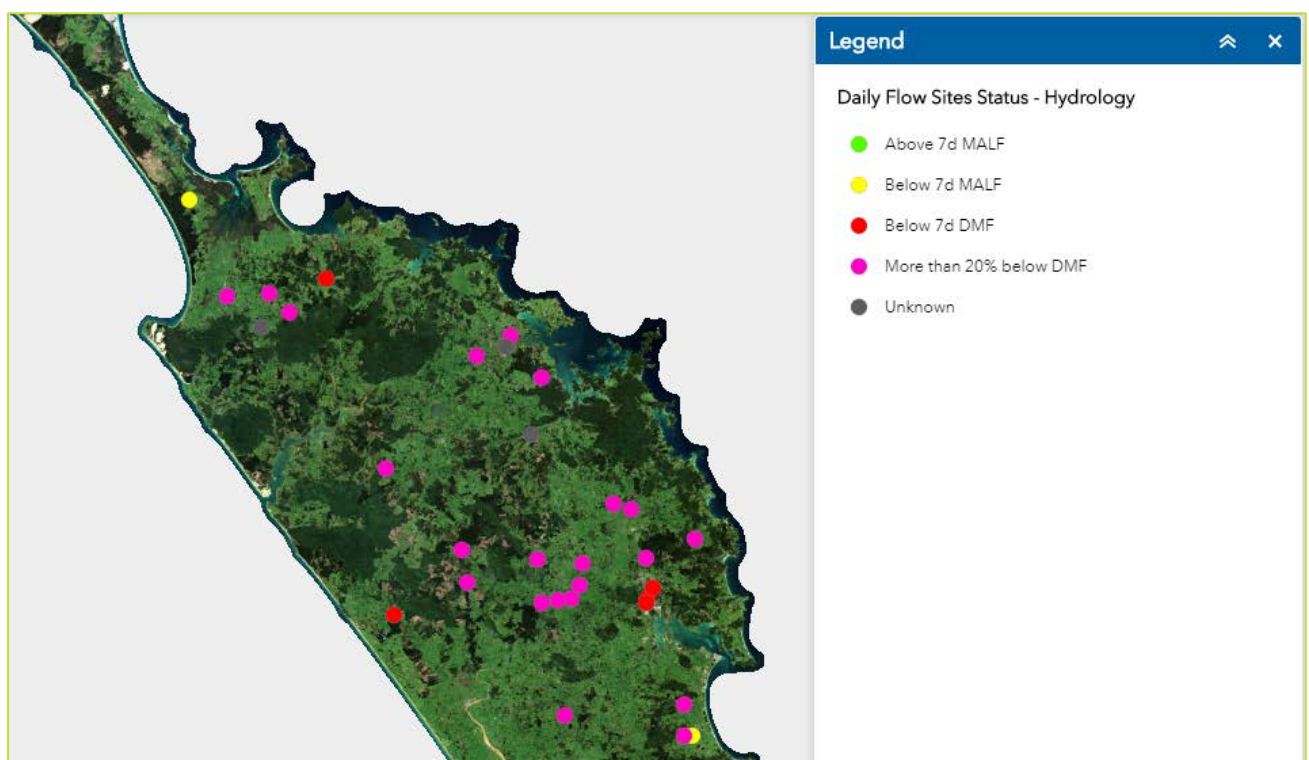
## River flows

The yellow and green dots on the drought flow map indicate the rivers over the drought minimum flows (DMF). 96% of rivers are currently below DMF (as of 16:00 02/03/20)

For update to date river flows refer to:

[www.nrc.govt.nz/environment/river-and-rainfall-data/river-and-rainfall-data/#hilltop-droughtinfo](http://www.nrc.govt.nz/environment/river-and-rainfall-data/river-and-rainfall-data/#hilltop-droughtinfo)

### Drought flow map:



# Groundwater levels

Nothing new to report

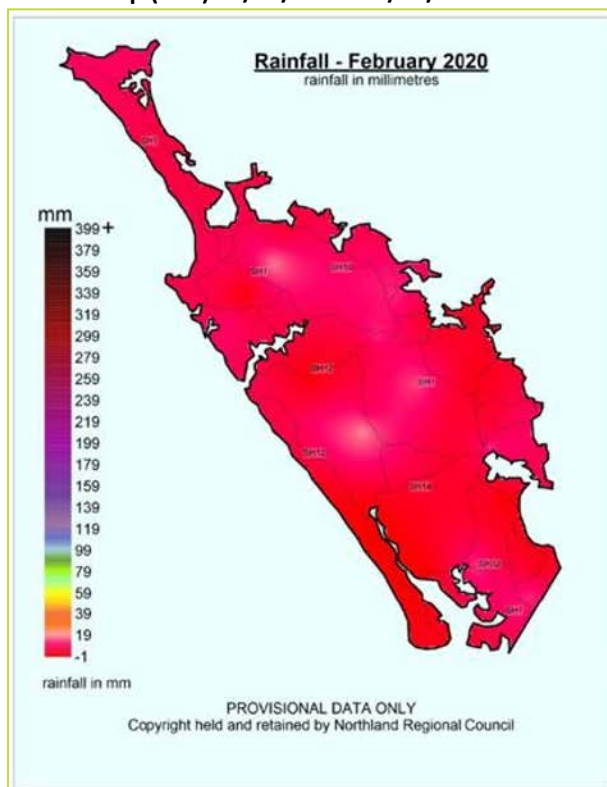
# Soil moisture deficits

Nothing new to report

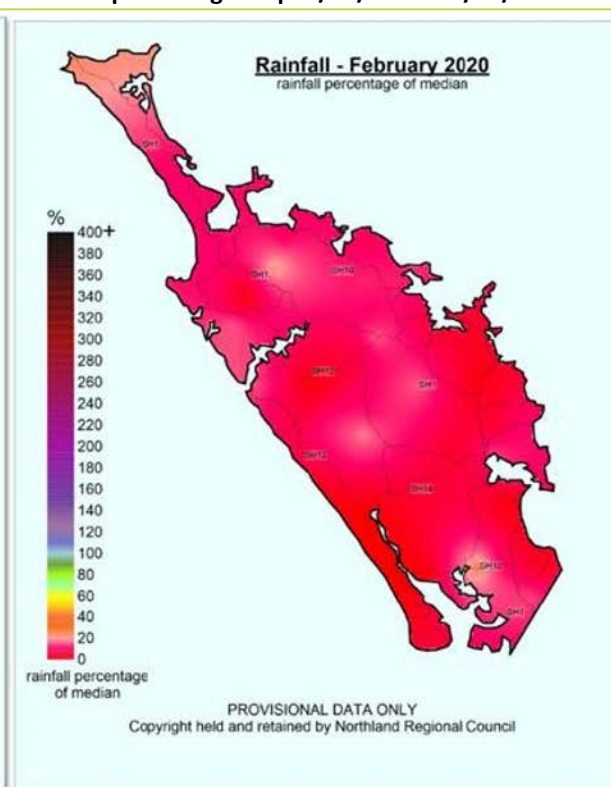
# Appendices

February 2020 & Summer rainfall summary:

Rainfall map (mm) : 1/02/2020 -29/02/2020



Rainfall percentage map: 1/02/2020 -29/02/2020



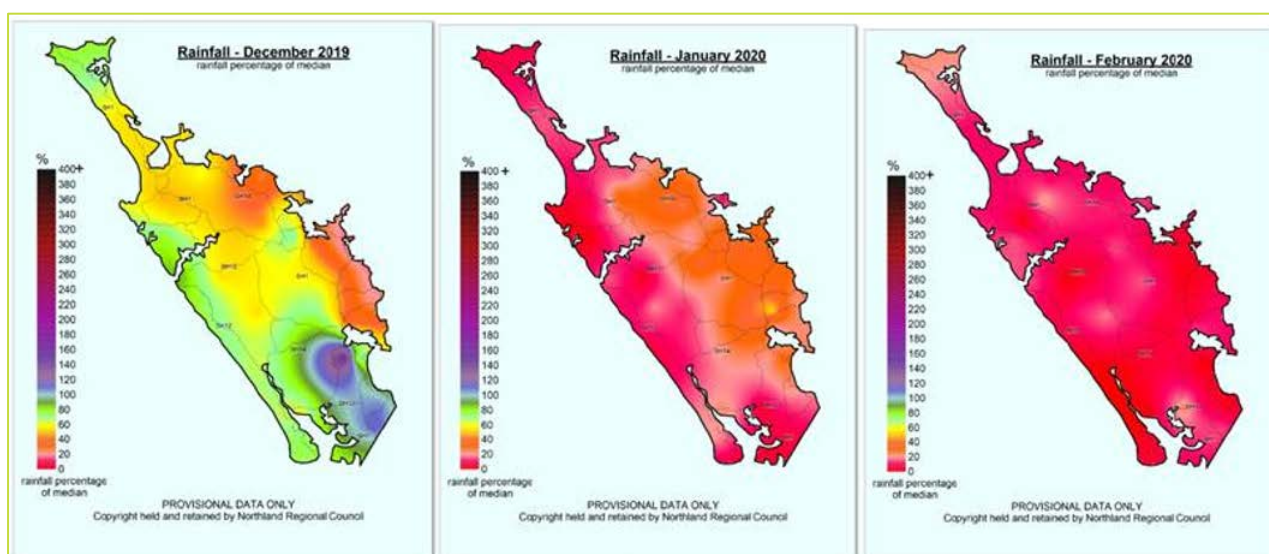
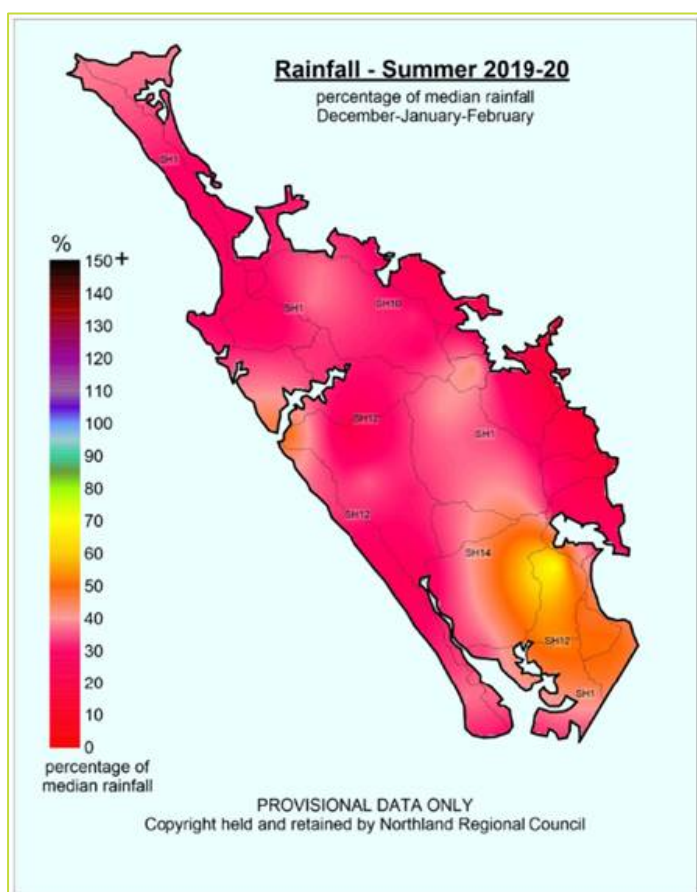
Rainfall totals at our recorder sites ranged from 0.5mm to 19.0mm. The lowest of 0.5mm for February was at Ruawai and Wilsons Dam, Ruakaka. These were followed by 0.8mm at Dargaville and 1mm at Taheke in the Hokianga with 1.5mm recorded in the Takahue catchment north of the Mangamukas and also at Kai Iwi Lakes. The highest rainfall for February was recorded up the Mangakahia Valley at Opouteke with 19mm followed closely by our Mangamuka (Maungataniwha Ranges) gauge with 18.5mm. 12 sites received 10mm or more leaving 36 sites with less than 10mm for the month. All up the region averaged 7.2mm. The drought continues!

Little more can be said about the percentages. Regionally we averaged just 9% of what we would expect in February and ranged from 25% in the south at our Paparoa gauge down to a paltry 1% at a number of sites (Dargaville, Ruawai, Taheke). 31 sites were 10% or less.



## Summer map

Another 'red' map, offset only by the yellow/orange in the Bream Bay area as a result of December thunderstorms. Regionally, Northland has had 35% of the rains we would usually expect over the summer months of December, January and February. The east coastal area around Oakura has fared the worst with only 15% and areas around the eastern hills of Puhipuhi to Whangarei about 25%. In fact 9 sites around the region received 25% or less over the 3 summer months. Gauges in the Bream Bay and southern areas received about 50% of normal with the Waikokopa site on McDonnell Road getting 71%, as indicated, largely from rain in December.



## **Northland Regional Council**

**P** 0800 002 004

**E** [info@nrc.govt.nz](mailto:info@nrc.govt.nz)

**W** [www.nrc.govt.nz](http://www.nrc.govt.nz)