



# Setting Freshwater Objectives

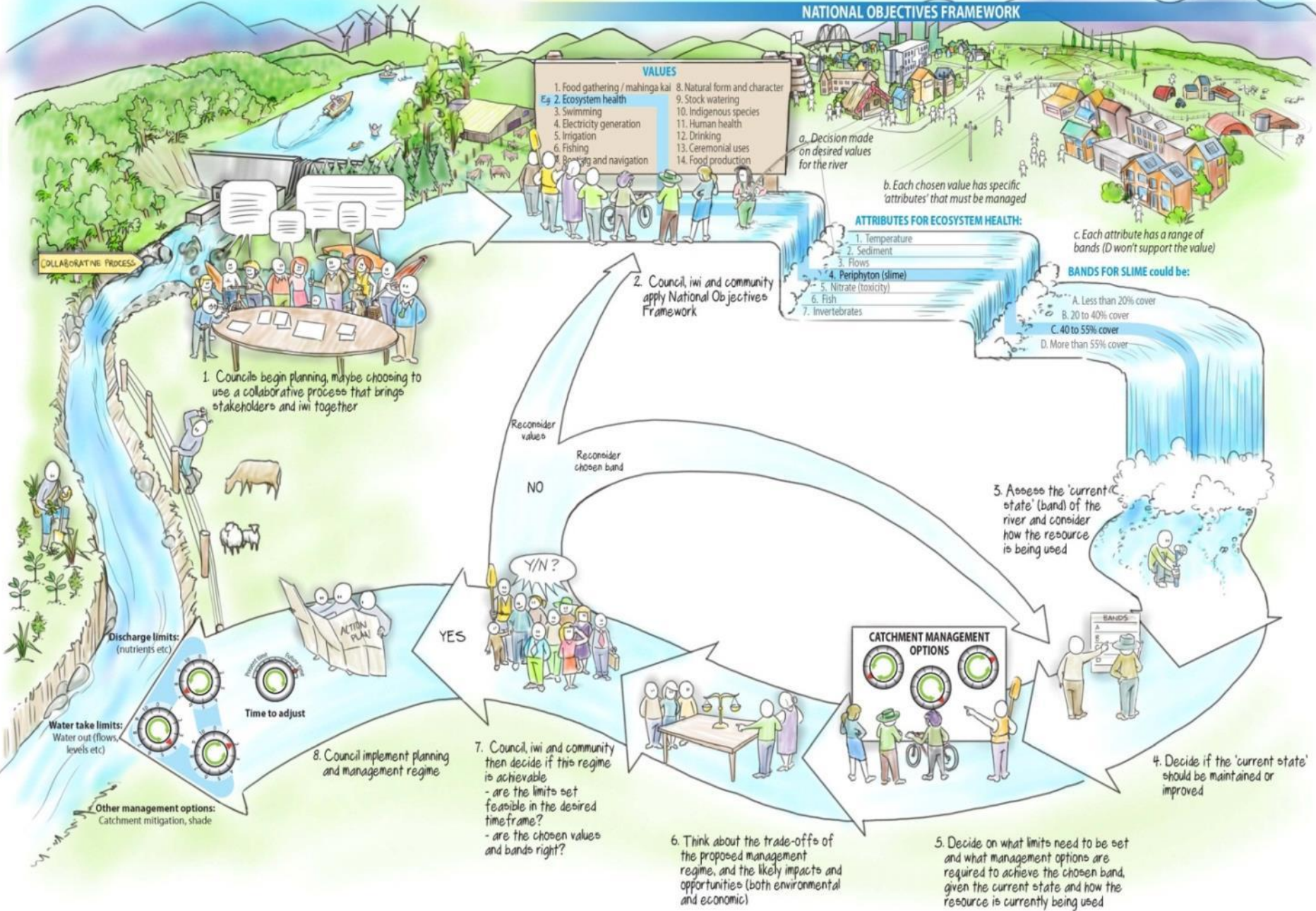
Natalie Glover – Water Policy Specialist

- Water quality and quantity objectives and limits for catchments in priority areas
- Interim default objectives and limits set for remaining catchments.



# Managing fresh water in New Zealand

## NATIONAL OBJECTIVES FRAMEWORK



# Catchment group work plan



# Policy Drivers

- NPS Freshwater Management 2014
  - National Objectives Framework

# Nationally consistent approach for managing freshwater

1. Consider all national values and how they apply to local and regional circumstances

# Compulsory national values

- **Te Hauora o te Wai / the health and mauri of water**
  - **Ecosystem health** – The freshwater management unit supports a healthy ecosystem appropriate to that freshwater body type (river, lake, wetland, or aquifer).

# Compulsory national values

- **Te Hauora o te Tangata / the health and mauri of the people**
  - **Human health for recreation** –no more than a moderate risk of infection to people when they are wading or boating or involved in similar activities that involve only occasional immersion in the water.
  - Other contaminants or toxins, such as toxic algae, would not be present in such quantities that they would harm people's health.



# Additional national values

- **Te Hauora o te Taiao / the health and mauri of the environment**
  - **Natural form and character** – Where people value particular natural qualities of the freshwater management unit.

# Additional national values

- **Mahinga kai / food gathering, places of food**
  - **Mahinga kai** – Kai are safe to harvest and eat.
  - **Mahinga kai** – Kei te ora te mauri (the mauri of the place is intact).
  - **Fishing** – The freshwater management unit supports fisheries of species allowed to be caught and eaten.

# Additional national values

- **Mahi māra / cultivation**
  - **Irrigation and food production** – The freshwater management unit meets irrigation needs for any purpose.
  - **Animal drinking water** – The freshwater management unit meets the needs of stock.

# Additional national values

- **Wai Tapu / Sacred Waters**
  - **Wai tapu** – Wai tapu represent the places where rituals and ceremonies are performed.
- **Wai Māori / municipal and domestic water supply**
  - **Water supply** – The freshwater management unit can meet people's potable water needs.

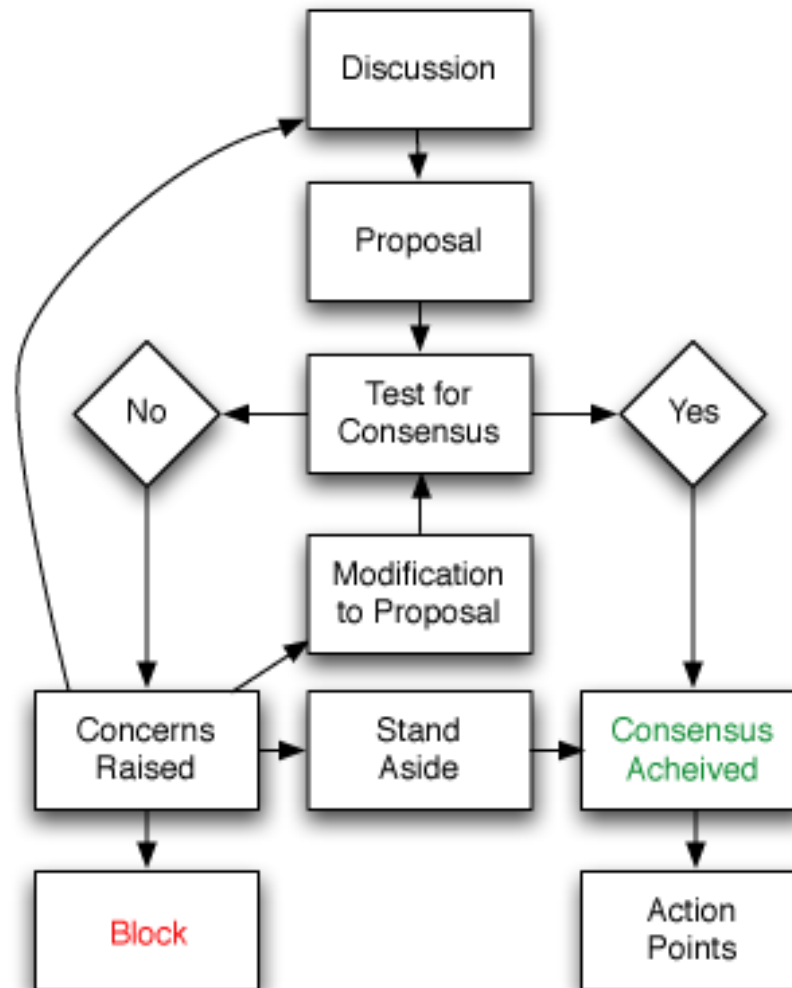
# Additional national values

- **Āu Putea / economic or commercial development**
  - **Commercial and industrial use** – The freshwater management unit provides economic opportunities to people, businesses and industries.
  - **Hydro-electric power generation** – The freshwater management unit is suitable for hydro electric power generation.

# Additional national values

- **He ara haere / navigation**
  - **Transport and tauranga waka** – The freshwater management unit is navigable for identified means of transport.

# Consensus Process



# Thank you

**Natalie Glover**

Policy Specialist -Water

 09 470 0246

 natalieg@nrc.govt.nz

 [www.nrc.govt.nz](http://www.nrc.govt.nz)



Follow us on  
Twitter

[Twitter.com/NRCexpress](https://twitter.com/NRCexpress)



# Stay connected



**0800 002 004**



**[www.nrc.govt.nz](http://www.nrc.govt.nz)**



**24/7 Environmental Hotline**  
**0800 504 639**

