





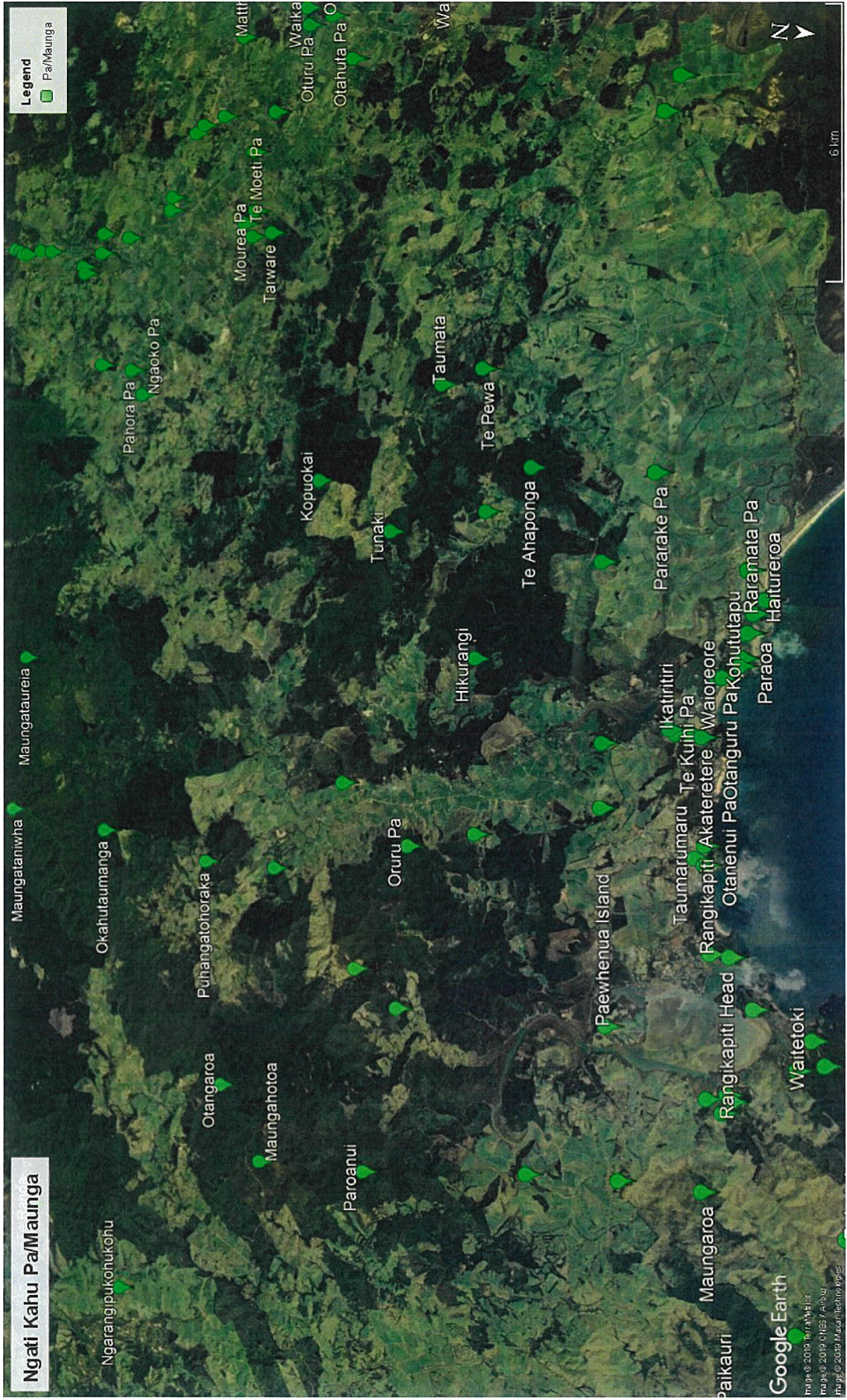


Ngati Kahu Pa/Maunga

Legend  
Pa/Maunga

Google Earth  
Imagery © 2019 DigitalGlobe  
Map data © 2019 CNES / Airbus









Ngati Kahu Takutaimoana

Legend  
● Takutaimoana

Google Earth

Image © 2019 CNES / Airbus

---

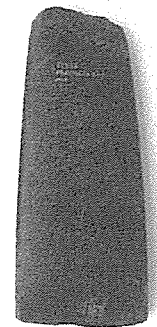
System ID	101959
Ethnology No	16682.2
Name/Title	implement
Brief Description	wooden implement from bank of Parapara river. kauri.
Cultural Origin	Maori/1. Aotearoa New Zealand terms
<u>Field Coll Place Details</u>	
Place	Parapara River/Doubtless Bay/Northland/New Zealand
<u>Associated Place Details</u>	
Associated Place	Parapara River/Doubtless Bay/Northland/New Zealand
Record Status	core record
<u>Measurement</u>	
1: Part	0 - Whole
Type	length
Reading	866mm
2: Part	0 - Whole
Type	width
Reading	30mm
3: Part	0 - Whole
Type	depth
Reading	18mm
Measurement Reading	866mm
	30mm
	18mm

---

---

System ID	27103
Ethnology No	52535
Name/Title	Adze
Brief Description	Adze
<u>Field Coll Place Details</u>	
Place	Doubtless Bay/Northland/New Zealand
Record Status	skeletal
<u>Measurement</u>	
Type	length x width x depth (l x w x d)
Reading	158.8 x 67.6 x 24.7mm
Precision	precise
Measurement Reading	158.8 x 67.6 x 24.7mm

---



---

System ID	27111
Ethnology No	9820
Name/Title	Adze
Brief Description	Adze
<u>Field Coll Place Details</u>	
Place	Doubtless Bay/Northland/New Zealand
Record Status	skeletal
<u>Measurement</u>	
Type	length x width x depth (l x w x d)
Reading	137.6 x 58.4 x 31.9mm
Precision	precise
Measurement Reading	137.6 x 58.4 x 31.9mm

---



**System ID** 85451  
**Ethnology No** 27220  
**Name/Title** mahe  
**Brief Description** sinker, broken before perforation at top was completed.  
Flat base with two worn notches

**Field Coll Place Details**

**Place** Houhora/Northland/New Zealand  
**Record Status** core record

**Measurement**

**Type** length x width  
**Reading** 63.1 x 55.5mm  
**Measurement Reading** 63.1 x 55.5mm



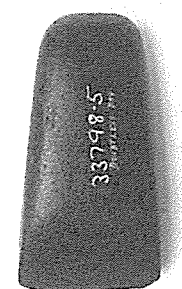
**System ID** 37346  
**Ethnology No** 33798.5  
**Name/Title** toki  
**Brief Description** Adze. Duff Type 2B. Complete. Rounded rectangular cross-section. Curved, steep bevel without chin. Almost straight cutting edge with heavy usewear. Deep, long striations on blade front, shorter striations on the back. Ground on the front, back and sides with facets on the corners above the bevel and front sides. Rounded poll hammerdressed only. Haft polish on butt.

**Field Coll Place Details**

**Place** Doubtless Bay/Northland/New Zealand  
**Record Status** skeletal

**Measurement**

**Type** length x width x depth (l x w x d)  
**Reading** 111.1 x 57.2 x 31.8mm  
**Measurement Reading** 111.1 x 57.2 x 31.8mm



**System ID** 38364  
**Ethnology No** 50223  
**Name/Title** mahe  
**Brief Description** sinker, lugged, pecked around neck to form lugg

**Provenance**

**Provenance Notes** Collected by  
**Person** Alf Hancox  
**Date** 1920-1940  
**Record Status** skeletal

**Measurement**

**Type** length x width x depth (l x w x d)  
**Reading** 99 x 67mm  
**Measurement Reading** 99 x 67mm





**System ID** 57760  
**Ethnology No** 35570  
**Name/Title** Taurapa  
**Brief Description** This taurapa has no surface carving, aside from the small manaia on the base, and the manaia head at the upper end. The surface of the stern is very worn and damaged. Perforations have been made along the base, in order to secure the taurapa to the waka.  
**Cultural Origin** Maori/1. Aotearoa New Zealand terms

**Associated Place Details**

**1: Associated Place** Far North/New Zealand  
**Notes** From Taonga database  
**2: Associated Place** Doubtless Bay/Northland/New Zealand  
**Notes** From Taonga database

**Researcher Notes**

**1: Notes** A taurapa from a canoe found at Doubtless Bay, Northland. The taurapa was gifted to the Auckland Museum in 1959 by Mr T Wallace.  
**Researcher** Taonga Database researcher  
**Date** 2003-2008  
**2: Notes** From Taonga Database: Notes for things to be checked out. Not to be seen.  
**Researcher** Taonga Database researcher  
**Date** 2003-2008  
**3: Notes** Pre 2015 Brief Description : river canoe stern piece - carved figures on shoulders of stern piece and at leading end. Canoe stern. . A taurapa from Doubtless Bay, Northland.

**Measurement**

**1: Part** 0 - Whole  
**Type** length  
**Reading** 1067mm  
**2: Part** 0 - Whole  
**Type** width  
**Reading** 260mm  
**3: Part** 0 - Whole  
**Type** height  
**Reading** 650mm

**Measurement Reading** 1067mm  
 260mm  
 650mm



**System ID** 630322  
**Ethnology No** 2771  
**Name/Title** Toki  
**Brief Description** Greenstone adze  
**Cultural Origin** [Maori]/Maori/1. Aotearoa New Zealand terms  
**Associated Person (name only)** not researched  
**Provenance**  
**Provenance Notes** not researched

**Field Coll Place Details**

**Place** Doubtless Bay/Northland/New Zealand  
**Notes** data from Locality column in Ethnology catalogue card, may not be field collection place

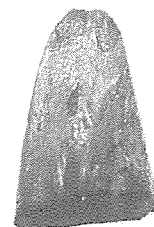
**Associated Place Details**

**Associated Place** Doubtless Bay/Northland/New Zealand  
**Record Status** core record

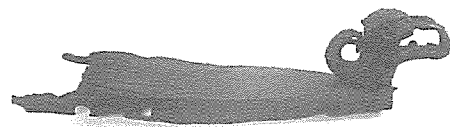
**Measurement**

**1: Part** 0 - Whole  
**Type** height  
**Reading** 71mm  
**2: Part** 0 - Whole  
**Type** width  
**Reading** 45mm  
**3: Part** 0 - Whole  
**Type** depth  
**Reading** 8mm

**Measurement Reading** 71mm  
 45mm  
 8mm



**System ID** 631933  
**Ethnology No** 3078  
**Name/Title** Haumi  
**Brief Description** This haumi, carved canoe prow, features a taniwha figure covered in spikes. At the back of the neck it curves upwards to form a second smaller head. The wood is knotted and worn and has been perforated along the sides for attachment to a waka.  
**1: Cultural Origin** Māmari/Waka o ngā Iwi/Iwi Hapu List/1. Aotearoa New Zealand terms  
**2: Cultural Origin** Ngāti Kahu/Ngā Iwi o Māmari/Iwi Hapu List/1. Aotearoa New Zealand terms

**Provenance**

**1: Provenance** Edward Earle Vaile Collection  
**Notes**  
**2: Provenance** Doubtless Bay  
**Notes**

**Field Coll Place Details**

**Place** Tokerau Beach/Doubtless Bay/Northland/New Zealand

**Associated Place Details**

**1: Associated** Far North/New Zealand  
**Place**  
**Notes** From Taonga database  
**2: Associated** Doubtless Bay/Northland/New Zealand  
**Place**  
**Notes** From Taonga database

**Researcher Notes**

**1: Notes** This haumi or bow cover, was found in a swamp near doubtless Bay in Northland. It was gifted to the Auckland Museum by Edward Earle Vaile in 1928.  
**Researcher** Taonga Database researcher  
**Date** 2003-2008  
**2: Notes** From Taonga Database Info to Find Out: Recovered from swamp behind Tokerau Bay Art of Polynesia QEII Arts Council (3) Pownall, G. 1972. Primitive art of the New Zealand Maori, pl I/7-8,  
**Researcher** Taonga Database researcher  
**Date** 2003-2008  
**3: Notes** Pre 2015 Brief Description : Carved canoe prow of unique design. . A haumi found in a swamp near Doubtless Bay, Northland.

**Measurement**

**1: Part** 0 - Whole  
**Type** length  
**Reading** 1070mm  
**2: Part** 0 - Whole  
**Type** width  
**Reading** 190mm  
**3: Part** 0 - Whole  
**Type** height  
**Reading** 250mm

**Measurement Reading** 1070mm  
 190mm  
 250mm

**System ID** 631937  
**Ethnology No** 3079  
**Name/Title** taurapa  
**Brief Description** Carved canoe stern post of unique design  
**Cultural Origin** Maori/1. Aotearoa New Zealand terms

**Field Coll Place Details**

**Place** Tokerau Beach/Doubtless Bay/Northland/New Zealand  
**Notes** in swamp

**Associated Place Details**

**Associated Place** Tokerau Beach/Doubtless Bay/Northland/New Zealand  
**Record Status** core record

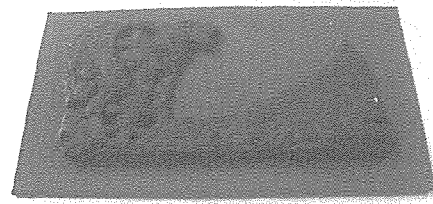
**Measurement**

**Type** length x width  
**Reading** 590 x 280mm  
**Measurement Reading** 590 x 280mm





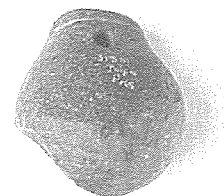
**System ID** 29701  
**Ethnology No** 53046  
**Name/Title** carving (cast)  
**Brief Description** cast of burnt carving discovered at the Oruru excavations, Taipa.  
**Cultural Origin** Maori/1. Aotearoa New Zealand terms  
**Associated Place Details**  
**Associated Place** Taipa/Auckland Province/New Zealand  
**Notes** cast made of carving found during Oruru excavations  
**Record Status** core record  
**Measurement**  
1: **Part** 0 - Whole  
    **Type** length  
    **Reading** 490mm  
    **Precision** approximate  
2: **Part** 0 - Whole  
    **Type** width  
    **Reading** 217mm  
3: **Part** 0 - Whole  
    **Type** depth  
    **Reading** 191mm  
**Measurement Reading** 490mm  
217mm  
191mm



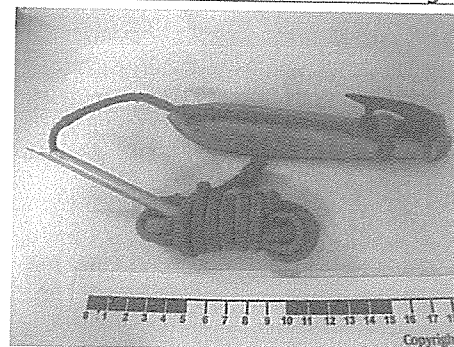
**System ID** 52979  
**Ethnology No** 37401  
**Name/Title** hoe  
**Brief Description** Canoe paddle  
**Cultural Origin** Maori/1. Aotearoa New Zealand terms  
**Provenance**  
1: **Provenance** Found at Gate Pa by  
    **Notes**  
    **Person** Mr Robert Neilson  
    **Date** 1864  
2: **Provenance** Part of the collection of  
    **Notes**  
    **Person** Lacy M Neilson (Kohukohu)  
**Field Coll Place Details**  
**Place** New Zealand  
**Associated Place Details**  
**Associated Place** New Zealand  
**Record Status** core record  
**Measurement**  
1: **Part** 0 - Whole  
    **Type** length x width x depth (l x w x d)  
    **Reading** 1610 x 140 x 130mm  
    **Notes** Te Awe storage technician, April 2016  
2: **Part** 0 - Whole  
    **Type** length  
    **Reading** 1600.2mm  
**Measurement Reading** 1610 x 140 x 130mm  
1600.2mm



**System ID** 73482  
**Ethnology No** 31351  
**Name/Title** Mahe  
**Brief Description** perforated stone sinker with grooved lug.  
**Field Coll Place Details**  
**Place** Taipa/Auckland Province/New Zealand  
**Record Status** skeletal  
**Measurement**  
**Type** length x width  
**Reading** 61 x 53.3mm  
**Measurement Reading** 61 x 53.3mm



System ID 44930  
Ethnology No 47390  
Name/Title fish hook, two-piece  
Brief Description Fish lure, mother of pearl, whalebone and tortoiseshell  
Cultural Origin Tongan  
Field Coll Place Details  
Place Tonga/Pacific  
Record Status skeletal



System ID 52973  
Ethnology No 37395.2  
Name/Title Tauwhenua  
Brief Description This stone-tooled tauwhenua has two low relief figures feet to feet with their heads projecting outwards from each end. Both figures have spirals on their shoulders and thighs.  
1: Cultural Origin Māmari/Waka o ngā Iwi/Iwi Hapu List/1. Aotearoa New Zealand terms  
2: Cultural Origin Ngāti Kahu/Ngā Iwi o Māmari/Iwi Hapu List/1. Aotearoa New Zealand terms  
& Notes Te Paatu

Provenance

1: Provenance Found at Gate Pa by  
Notes  
Person Mr Robert Neilson  
Date 1864  
2: Provenance Part of the collection of  
Notes  
Person Lacy M Neilson (Kohukohu)  
3: Provenance L M Neilson Collection  
Notes

Associated Place Details

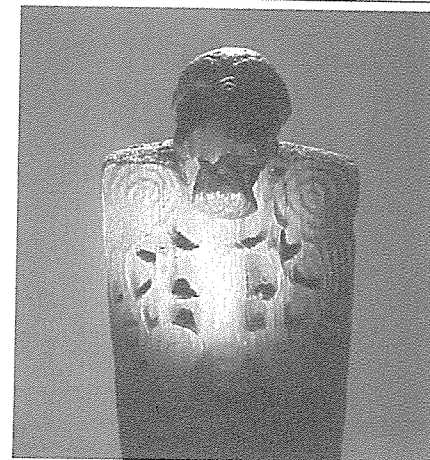
1: Associated Place Far North/New Zealand  
Notes From Taonga database  
2: Associated Place Takahue/Kaitaia/Northland/New Zealand  
Notes From Taonga database

Researcher Notes

1: Notes This tauwhenua was found hidden in a swamp along with several other parts of pataka. It was purchased in 1964.  
Researcher Taonga Database researcher  
Date 2003-2008  
2: Notes From Taonga Database: Notes for things to be checked out. Not to be seen.  
Researcher Taonga Database researcher  
Date 2003-2008  
3: Notes Pre 2015 Brief Description : Storehouse support beam. . A tauwhenua found in a swamp at Takahue.

Measurement

Type length x width  
Reading 1425 x 380mm  
Measurement Reading 1425 x 380mm





System ID	52974
Ethnology No	37396 37396.1 37396.2
Name/Title	Whakawae pataka
Brief Description	This whakawae is carved on all limbs and has an extended tongue, with the slot to secure the door disguised between the legs. The bottom of the panel is damaged. Four square holes run the length of the whakawae on the outer edge.
1: Cultural Origin	Māmari/Waka o ngā Iwi/Iwi Hapu List/1. Aotearoa New Zealand terms
2: Cultural Origin	Ngāti Kahu/Ngā Iwi o Māmari/Iwi Hapu List/1. Aotearoa New Zealand terms
& Notes	Te Paatu
<u>Provenance</u>	
1: Provenance	Found at Gate Pa by
Notes	
Person	Mr Robert Neilson
Date	1864
2: Provenance	Part of the collection of
Notes	
Person	Lacy M Neilson (Kohukohu)
3: Provenance	L M Neilson Collection
Notes	
<u>Associated Place Details</u>	
1: Associated	Far North/New Zealand
Place	
Notes	From Taonga database
2: Associated	Takahue/Kaitaia/Northland/New Zealand
Place	
Notes	From Taonga database
<u>Researcher Notes</u>	
1: Notes	These whakawae pataka are part of a pair of storehouse door jambs both of which are probably carved with stone tools in the eighteenth century. They were found hidden in a swamp along with several other parts of pataka. It was formerly part of the L M Neilson collection and purchased through in 1964 by the Auckland Museum.
Researcher	Taonga Database researcher
Date	2003-2008
2: Notes	Pre 2015 Brief Description : Carved slab, wood. The whakawae is carved on all limbs and has an extended tongue. The slot to secure the door has broken away and the bottom of the panel is damaged. Four square holes run the length of the whakawae on the outer edge.. A whakawae pataka recovered from a swamp at Takahue.
<u>Measurement</u>	
1: Part	.1 - slab
Type	length x width
Reading	976 x 93mm
2: Part	.2 - slab
Type	length x width
Reading	902 x 103mm
Measurement Reading	976 x 93mm 902 x 103mm

**System ID** 52976  
**Ethnology No** 37398  
**Name/Title** Whakawae pataka  
**Brief Description** This whakawae pataka is one of a pair of storehouse door jambs both of which were probably carved with stone tools in the eighteenth century. It features a sinuous figure, carved on the limbs and parts of the face, and has a square perforation at the lower end.

**1: Cultural Origin** Māmari/Waka o ngā Iwi/Iwi Hapu List/1. Aotearoa New Zealand terms  
**2: Cultural Origin** Ngāti Kahu/Ngā Iwi o Māmari/Iwi Hapu List/1. Aotearoa New Zealand terms  
**& Notes** Te Paatu

**Provenance**

- 1: Provenance Notes** Found at Gate Pa by  
**Person** Mr Robert Neilson  
**Date** 1864  
**2: Provenance Notes** Part of the collection of  
**Person** Lacy M Neilson (Kohukohu)  
**3: Provenance Notes** L M Neilson Collection

**Associated Place Details**

- 1: Associated Place Notes** Far North/New Zealand  
**Notes** From Taonga database  
**2: Associated Place Notes** Takahue/Kaitaia/Northland/New Zealand  
**Notes** From Taonga database

**Researcher Notes**

- 1: Notes** This whakawae pataka was found hidden in a swamp along with several other parts of a pataka. It was formerly part of the L M Neilson Collection and purchased in 1964 by the Auckland Museum.  
**Researcher** Taonga Database researcher  
**Date** 2003-2008  
**2: Notes** From Taonga Database Info to Find Out: CARD: Decorated with elongated human figure. Pierced about 1 foot from the base.  
**Researcher** Taonga Database researcher  
**Date** 2003-2008  
**3: Notes** Pre 2015 Brief Description : Slab, wood, carved, decorated with elongated human figure. . A whakawae pataka recovered from a swamp at Takahue.

**Measurement**

**Part** .2 - fragment  
**Type** length  
**Reading** 900mm  
**Measurement Reading** 900mm



<b>System ID</b>	52977
<b>Ethnology No</b>	37399
<b>Name/Title</b>	Whakawae pataka
<b>Brief Description</b>	This whakawae pataka is one of a pair of storehouse door jambs both of which were probably carved with stone tools in the eighteenth century. The door of the pataka was secured with a bar which ran in a disguised slot at the ends of the bodies of both whakawae. It features a sinuous figure, carved on the limbs and parts of the face, and has a square perforation at the lower end.
<b>1: Cultural Origin</b>	Māmari/Waka o ngā Iwi/Iwi Hapu List/1. Aotearoa New Zealand terms
<b>2: Cultural Origin &amp; Notes</b>	Ngāti Kahu/Ngā Iwi o Māmari/Iwi Hapu List/1. Aotearoa New Zealand terms Te Paatu

**Provenance**

<b>1: Provenance Notes</b>	Found at Gate Pa by <b>Person</b> Mr Robert Neilson <b>Date</b> 1864
<b>2: Provenance Notes</b>	Part of the collection of <b>Person</b> Lacy M Neilson (Kohukohu)
<b>3: Provenance Notes</b>	L M Neilson Collection

**Associated Place Details**

<b>1: Associated Place Notes</b>	Far North/New Zealand From Taonga database
<b>2: Associated Place Notes</b>	Takahue/Kaitaia/Northland/New Zealand From Taonga database

**Researcher Notes**

<b>1: Notes</b>	This whakawae pataka was found hidden in a swamp along with several other parts of pataka. It was formerly part of the L M Neilson Collection and purchased in 1964 by the Auckland Museum. <b>Researcher</b> Taonga Database researcher <b>Date</b> 2003-2008
<b>2: Notes</b>	From Taonga Database Info to Find Out: Art of Polynesia; Creative New Zealand Toi Aotearoa, Illustration of 52974, CARD: Decorated with elongated human figure <b>Researcher</b> Taonga Database researcher <b>Date</b> 2003-2008
<b>3: Notes</b>	Pre 2015 Brief Description : Slab, wood, carved, decorated with elongated human figure. . A whakawae pataka recovered from a swamp at Takahue.

**Measurement**

<b>1: Part Type Reading</b>	.1 - whakawae pataka length 1346.2mm
<b>2: Part Type Reading</b>	.2 - fragment length 1470mm
<b>Measurement Reading</b>	1346.2mm 1470mm

**System ID** 33588  
**Ethnology No** 50858  
**Name/Title** Hoe  
**Brief Description** Hoe, carved canoe paddle, has an undulating handle and an elongated lozenge shaped blade, carved in relief, with a curvilinear design at the joint. A splayed female figure is below this.

**Cultural Origin** Ngāti Kahu/Ngā Iwi o Māmarī/Iwi Hapu List/1. Aotearoa New Zealand terms

**& Notes** attributed by James Ngatoa and D Simmons

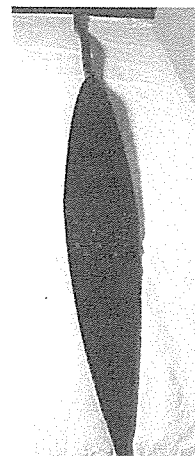
#### Researcher Notes

- 1: Notes** This paddle was purchased by the Auckland Museum in 1984.  
**Researcher** Taonga Database researcher  
**Date** 2003-2008
- 2: Notes** From Taonga Database Info to Find Out: Southeby Parke Bennet Inc., New York  
**Researcher** Taonga Database researcher  
**Date** 2003-2008
- 3: Notes** From Taonga Database: Notes for things to be checked out. Not to be seen.  
**Researcher** Taonga Database researcher  
**Date** 2003-2008
- 4: Notes** Pre 2015 Brief Description : Paddle, carved (description in register by James Ngatoa and D Simmons). Canoe paddle. . A canoe paddle purchased by the Auckland Museum.

#### Measurement

- 1: Part** blade  
**Type** height x width x depth/length  
**Reading** 1100 x 154mm
- 2: Part** 0 - Whole  
**Type** length  
**Reading** 1880mm

**Measurement Reading** 1100 x 154mm  
 1880mm



**System ID** 101958  
**Ethnology No** 16682.1  
**Name/Title** implement  
**Brief Description** wooden implement from bank of Parapara river. kauri.  
**Field Coll Place Details**  
**Place** Parapara River/Doubtless Bay/Northland/New Zealand



**Case 2019-03**

28 March 2019

Nick Tauhara  
Kauhanga Marae

Via email: [pereniki@gmail.com](mailto:pereniki@gmail.com)

Tēnā koe,

I am writing to inform you that the Ministry for Culture and Heritage has been notified of the finding of the following taonga tūturu:

Case Reference	Place Found	Type of Taonga
2019-03	Oruru, Northland	Whakairo (tōtara)

We are now seeking claims for ownership and/or custody from people who may have an interest in the taonga tūturu as required under the Protected Objects Act 1975. To make a claim you should write or email the Ministry, and include the following information where possible:

- your interests/association with the taonga tūturu or the area in which it was found;
- whether your claim is based on actual or traditional ownership (see guidance below);
- how you intend to provide for the care and safekeeping of the taonga;
- whether you are claiming in the name of an incorporated society, charitable trust or other entity (if so, please include any relevant documentation, such as the organisation's Trust Deed); and
- the name and contact details of a primary contact person.

#### **Actual or Traditional Ownership**

The finding of taonga tūturu is regulated by the Protected Objects Act 1975. Under the Act, any taonga tūturu found after 1 April 1976 is in the first instance Crown owned to allow claims for actual ownership to be lodged with the Māori Land Court. The Act provides several mechanisms for interested parties to claim ownership or be granted custody until ownership is determined by the Māori Land Court.

In some cases the Māori Land Court considers the order for ownership should be for 'traditional ownership', rather than 'actual ownership'. The Court has issued helpful comments on whether an order should be for traditional ownership or actual ownership. 'Actual ownership' may be appropriate where it is clear that a taonga was owned by a particular person or persons. 'Traditional ownership' may be appropriate where a hapū, iwi or other group should own the taonga.

The Ministry's current practice is to advise the Court of both approaches to ownership and for the Court to decide whether to make an order for traditional or actual ownership. It would be useful, therefore, if you could indicate whether you would consent to an order of traditional ownership.

The Court will often also make an order for taonga tūturu to vest in one or more persons as trustee for safekeeping and preservation. Often the Court makes this part of the order in favour of a legal entity such as an incorporated society or a charitable trust which represents the hapū, iwi or other group.

### Next steps

The Ministry is required to publish a **public notice calling for claims of ownership to be lodged within 60 working days**. The notice will be published on 1 April 2019 under "Public Notices" of *The Northern Advocate*. It will also be published on the Ministry's website [www.protected-objects.govt.nz](http://www.protected-objects.govt.nz). I would therefore appreciate receiving claims for ownership or custody by 26 June 2019, 60 working days from the publication of the newspaper notice, if not earlier. **If you do not wish to make a claim, we would appreciate you confirming this by the above date.**

If you have any questions or would like further information, please email me at either [luke.stenner@mch.govt.nz](mailto:luke.stenner@mch.govt.nz) or [protected-objects@mch.govt.nz](mailto:protected-objects@mch.govt.nz), or ring me on (04) 499 4229 extension 535. Further information can also be found on the Ministry's website [www.protected-objects.govt.nz](http://www.protected-objects.govt.nz).

I would be grateful if you could pass this information on to any other persons or organisations that might have an interest in the ownership or custody of the taonga tūturu.

Nāku noa, nā



Luke Stenner  
Adviser



Case 2019-03 Oruru, Northland



Z21362

