

Activities funded by regional rates

Ngā mahi e utua ana e ngā reiti ā rohe

Your rates assessment lists several regional council rates. This is an overview of what each rate is used for.

Region-wide rates

Council services rate

This rate funds a wide range of activities including: planning, consents and monitoring; governance and engagement; economic development; customer services, transport, harbour safety and oil pollution control; corporate services and other activities.

Land and freshwater management rate

This rate funds land management activities and activities to improve freshwater quality in local waterways, such as erosion control, landowner advice, water quality monitoring and water allocation.

Pest management rate

This rate funds pest plant and animal management activities on land and in the water and supports community-led pest control projects.

Flood infrastructure rate

This rate fully or partially funds the development of flood protection infrastructure and other minor river works in communities across Northland.

Emergency and hazard management rate

This rate funds Civil Defence emergency management, natural hazard management activities and climate change adaptation planning activities.

Emergency services rate

This rate provides funding for organisations whose primary purpose is to save lives that are in immediate or critical danger, or to respond to serious injury.

Regional sporting facilities rate

This rate contributes funds towards the development of sporting facilities across Northland that are of regional benefit.

Regional economic development rate

This rate funds activities which support economic wellbeing in Northland and community infrastructure.

District-wide rates

Whangārei transport rate

This rate helps fund Whangārei district's public bus, Total Mobility services and other public transport services.

Local area rates

Whangārei urban rivers rate

This funds flood risk reduction in the central business district (CBD), including repayment of the Hopua te Nihotetea detention dam in Raumanga. It is paid only by those within the CBD flood area and contributing water catchment areas, differentiated by location and land use.

Find out more

Information on instalment dates, penalties and discounts can be found on your rates assessment.

To make rates collection processes easier, Northland Regional Council's policies on the remission and postponement of rates and penalties in the Whangārei district are consistent with Whangārei District Council's policies. To view the full policies visit nrc.govt.nz/rates

There is more detail on the regional council's activities and budgets in our Long Term Plan – visit nrc.govt.nz/longtermplan

Working

for a thriving Northland



Te Taitokerau, ka whāi hua

0800 002 004 www.nrc.govt.nz/rates
24/7 Environmental Hotline 0800 504 639

Northland
REGIONAL COUNCIL
Te Kaunihera ā rohe o Te Taitokerau

About Northland Regional Council's
2021/2022 rates | Whangārei district

Northland
REGIONAL COUNCIL
Te Kaunihera ā rohe o Te Taitokerau

Our path to the future

Te Mahere Roa



We've recently finalised our roadmap for the next 10 years – the Long Term Plan 2021-2031 – to support Northland's growth and wellbeing while navigating the changing world we live in.

It's been a delicate balancing act and we are confident that we've settled on the best combination of work to serve Northland's diverse needs. At the heart of it all is our vision: "Our Northland – together we thrive".

We're now planning to really ramp things up, particularly in the areas of water health, biosecurity and climate change.

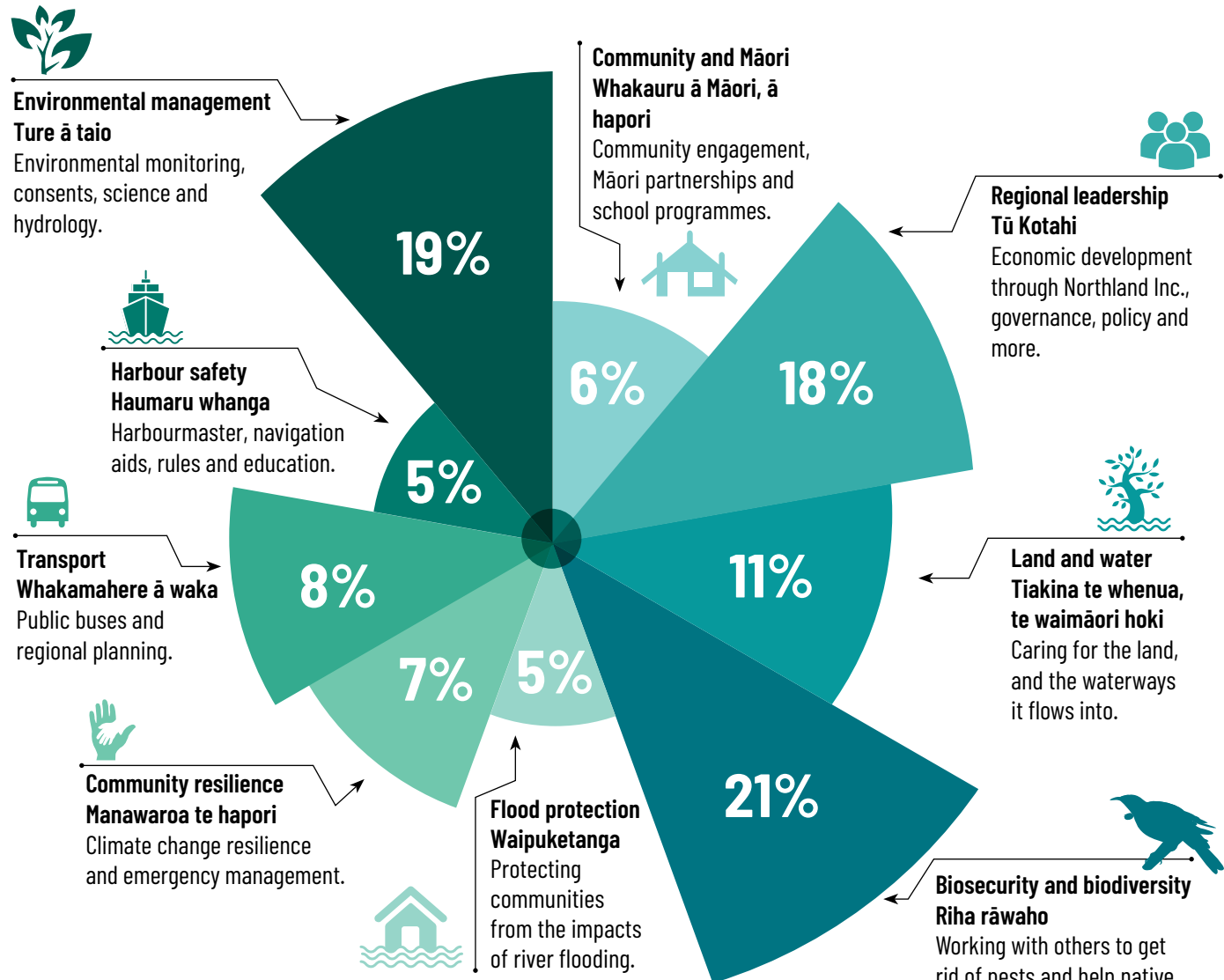
Thank you for being involved and helping us plan for a strong Northland – we couldn't fulfil our region's potential without your support.

www.nrc.govt.nz/longtermplan

The money and where it goes

Ki hea te pūtea e pau ana

Your rates, together with the funding we get from other sources, are being put to work right across the region.



Environmental management
Ture ā taio
Environmental monitoring, consents, science and hydrology.



Harbour safety
Haumaru whanga
Harbourmaster, navigation aids, rules and education.



Transport
Whakamahere ā waka
Public buses and regional planning.



Community resilience
Manawaroa te hāpori
Climate change resilience and emergency management.



Flood protection
Waipuketanga
Protecting communities from the impacts of river flooding.

Community and Māori
Whakauru ā Māori, ā hāpori
Community engagement, Māori partnerships and school programmes.



Regional leadership
Tū Kotahi
Economic development through Northland Inc., governance, policy and more.



Land and water
Tiakina te whenua, te waimāori hoki
Caring for the land, and the waterways it flows into.



Biosecurity and biodiversity
Riha rāwaho
Working with others to get rid of pests and help native life thrive.

52% of our revenue comes from rates; the rest comes from investment income, fees and charges, and government grants.