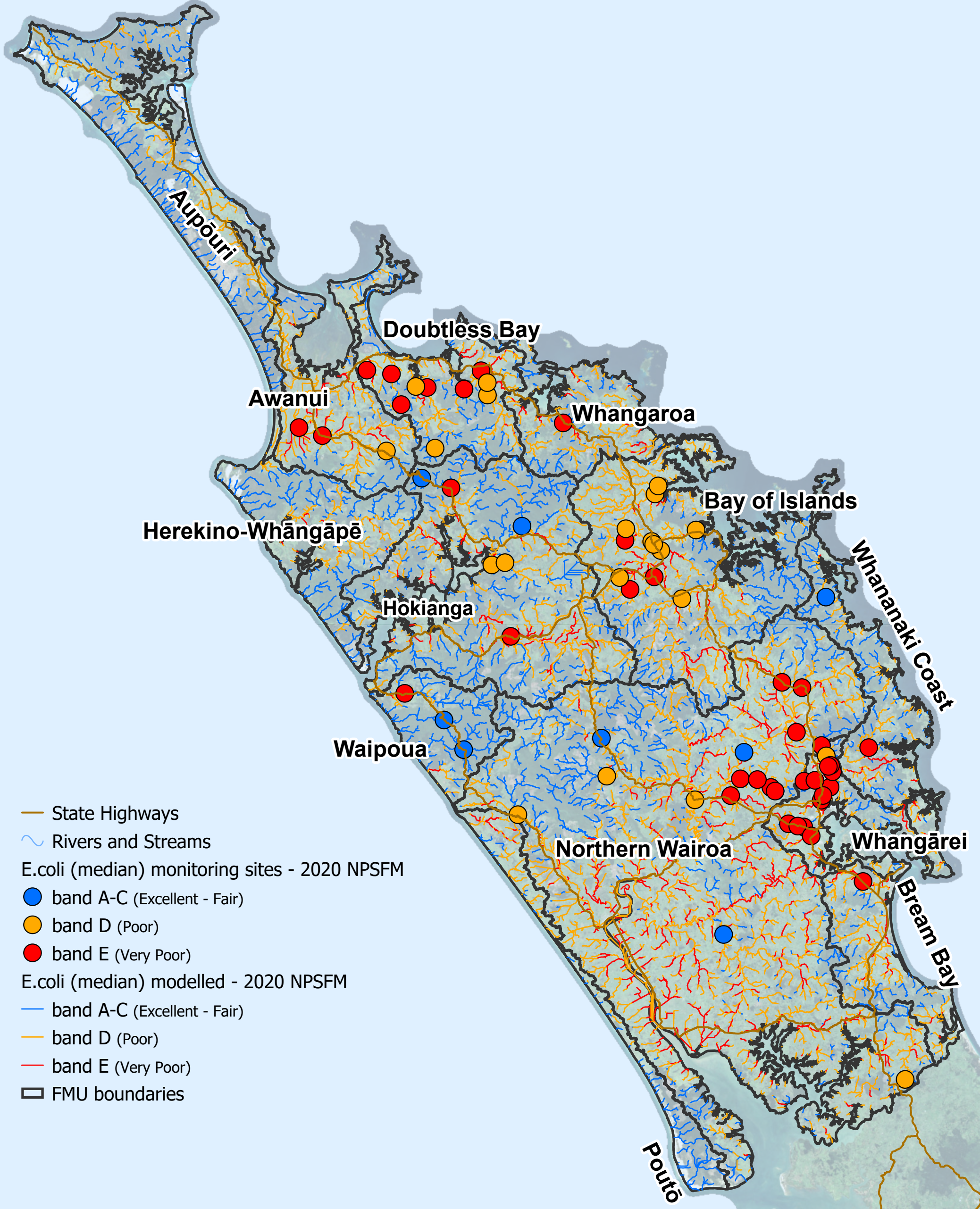




Northland river water quality baseline state (2015 - 2019) (*E.coli* - median)



- State Highways
- Rivers and Streams
- E.coli (median) monitoring sites - 2020 NPSFM
 - band A-C (Excellent - Fair)
 - band D (Poor)
 - band E (Very Poor)
- E.coli (median) modelled - 2020 NPSFM
 - band A-C (Excellent - Fair)
 - band D (Poor)
 - band E (Very Poor)
- FMU boundaries