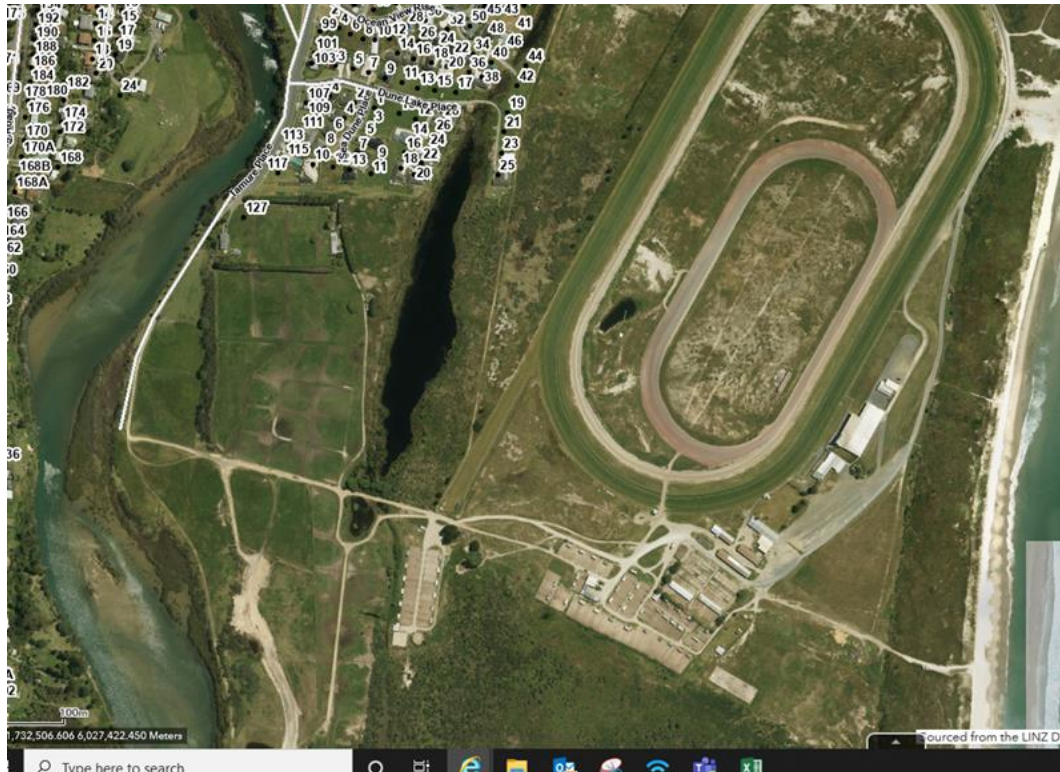


Central and East Northland

Ruakaka Racecourse Lake (East Northland), NRC Lake No. 247A



Ruakaka Racecourse Lake.

Summary	Ruakaka Racecourse Lake
Surveyed:	2007
Overall ranking:	Low: Degraded waterbody with no submerged vegetation
Threats:	The new subdivision is likely to increase disturbance to water birds.
Management recommendations:	No monitoring.

Description

A coastal dune lake (1731500E 6027385N) adjacent to the Ruakaka Racecourse. The lake is shallow < 1 m deep. Access was difficult at the time of survey, but the northern end of the lake is now (2020) developed for residential properties.

Wetland vegetation

The lake was completely bordered by emergent vegetation, with *Typha orientalis*, *Schoenoplectus tabernaemontani*, *Eleocharis acuta*, *Eleocharis sphacelata* and *Machaerina articulata* recorded. The introduced invasive alligator weed (*Alternanthera philoxeroides*) was present. Emerged *Potamogeton cheesemanii* was found within to taller emergent vegetation.

Submerged vegetation

No submerged vegetation was found.

Water birds

A 2007 survey found black shag, little black shag and little shag, grey duck, scaup, Australasian shoveler, spotless crane and banded rail (Ray Pierce pers. comm.). Australasian bittern were reported by a local resident (Waipu PNA surveys).

Fish

None seen.

Aquatic invertebrates

None seen.

Endangered species

None seen.

Lake Ecological Value

Lake Ecological Value score of 2 "Low", with no submerged vegetation.

Threats

Degraded water body, the new subdivision is likely to increase disturbance to water birds.

Management recommendations

No monitoring.