

Welcome



Regional plans review workshop

Air Quality

24 October 2014

Welcome, introductions and housekeeping

- Welcome
- NRC introductions
- Toilets and fire
- Attendance register
- Participant introductions



Why do a review?

- Plans are old
- Based on old information
- We have to
- Learnt a lot
- New government policy



Outline of the day

9:45 - 11:00	Air Quality - Issues
11:00 - 11:15	Morning tea
11:15 - 1:00	Air Quality - Solutions
1:00 - 1:30	Lunch
1:30 - 3:00	Extra time if needed
3:00 – 3:15	Afternoon tea
3.15 – 3:30	Wrap up, next steps & evaluations

Scope

Focusses on 4 main air quality issues:

- Smoke
- Dust
- Odour
- Spraydrift

A bit of background - RMA

Section 15 RMA

**Industrial or Trade =
consent if not permitted
in plan**

**Any Other Place =
permitted if no rule in
plan**

Includes:

**Manufacturing Processes
Waste treatment/disposal
Mineral extraction
'Intensive' farming**

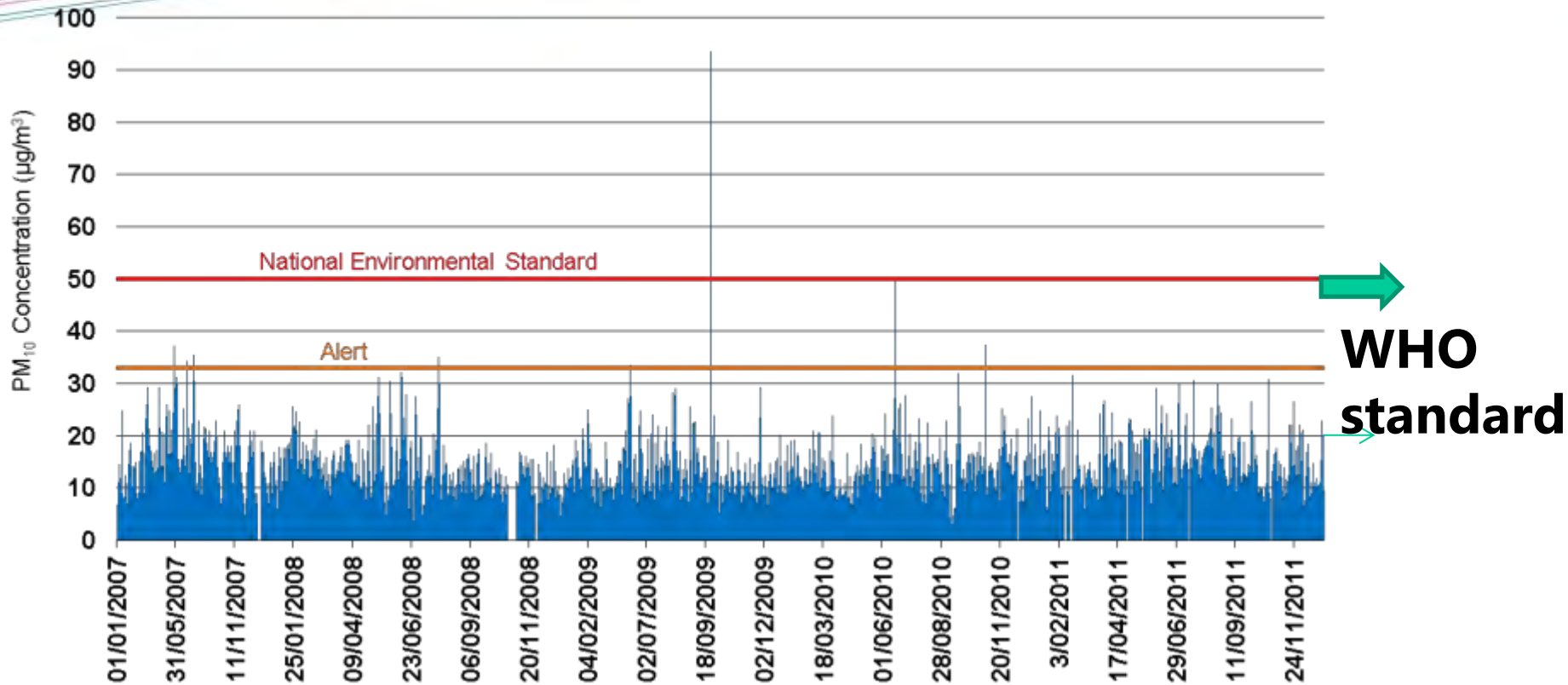
Includes:

Production Land
Domestic premises

A bit of background – NES Air Quality

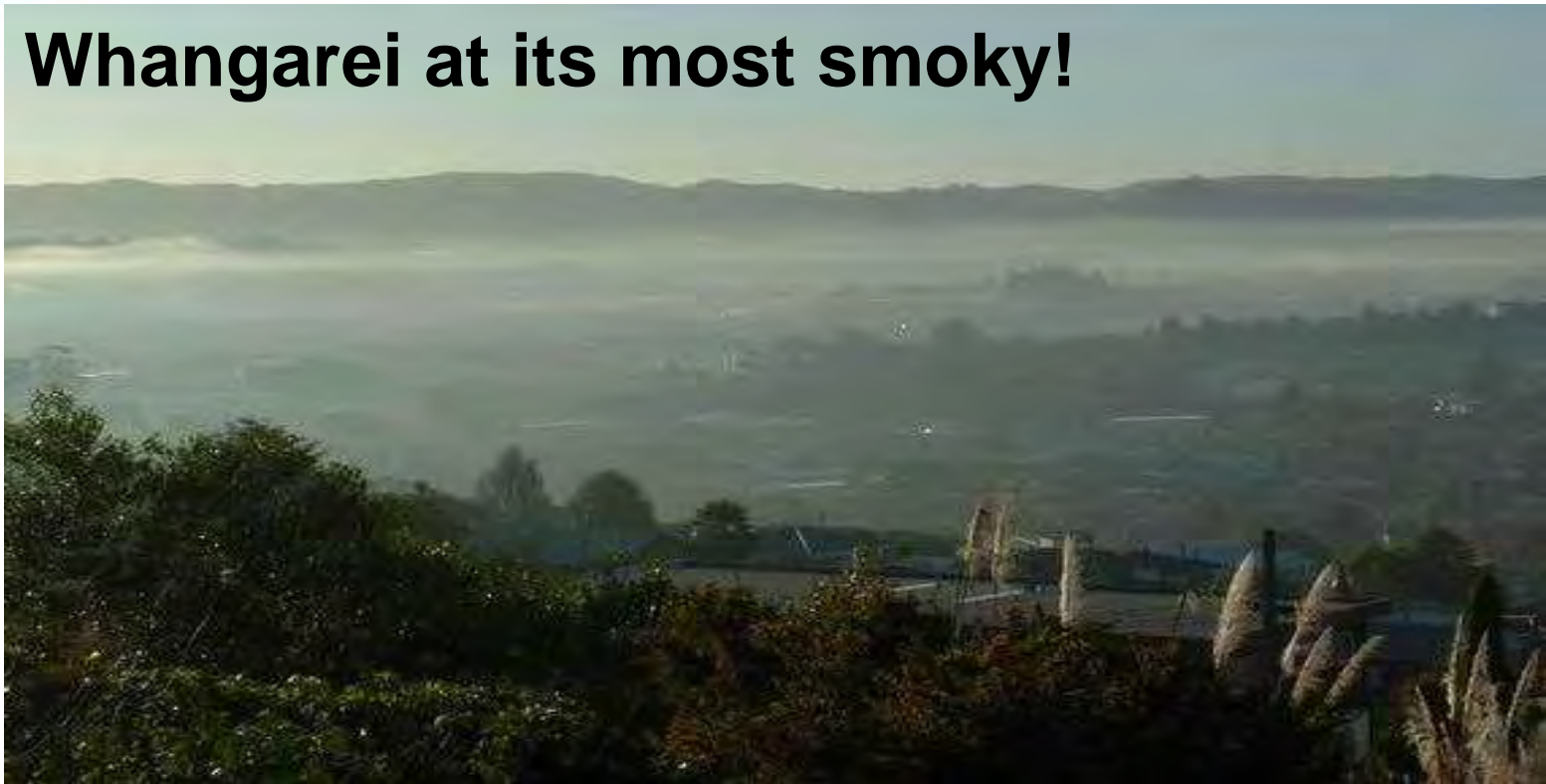
- Standards that can't be breached
- PM10, SO2, CO etc...
- Gazette airsheds where breach possible
- Risk based monitoring
- Decline consents, offset, amend rules if breach

A bit of background – NES Air Quality



State of Air Resource

Whangarei at its most smoky!

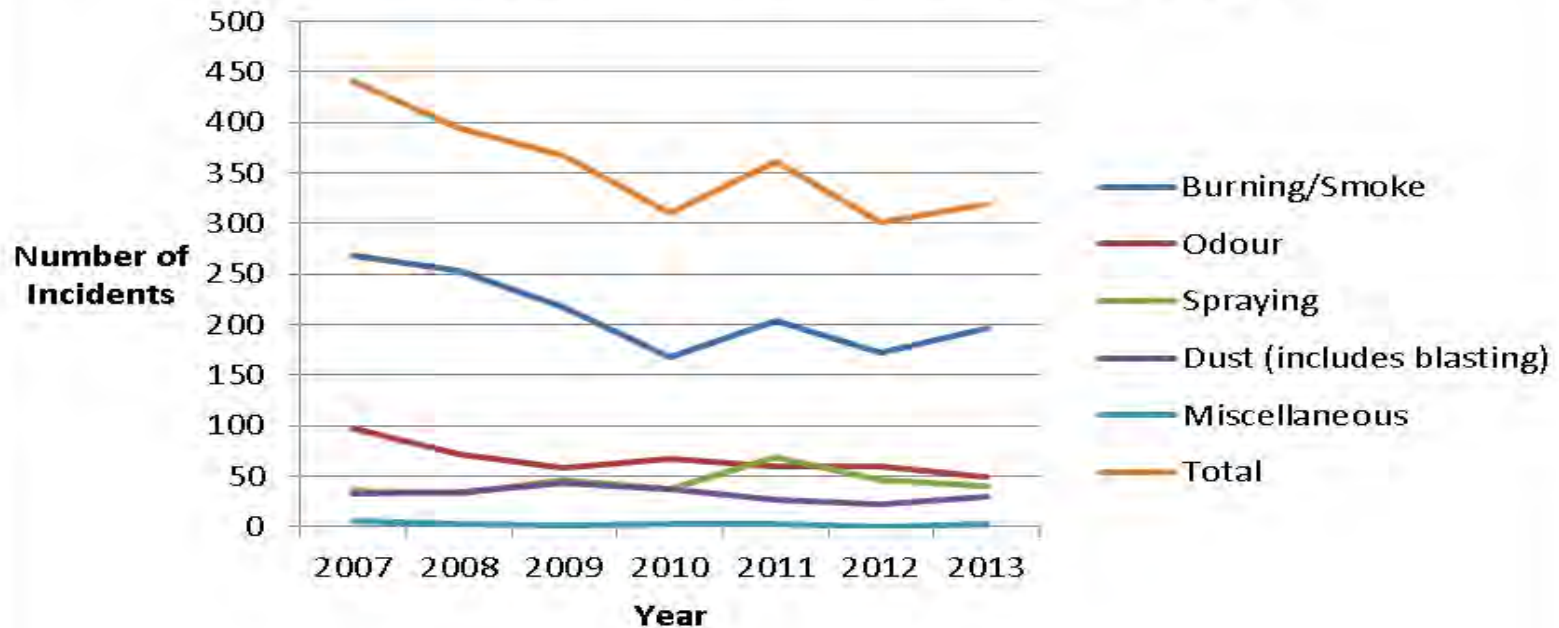


Consents for Air Discharge

Activity	Number (as of 23.10.14)
Agricultural	1
Blasting	26
Industrial	59
Other	20
Sewage	219
Solid Waste	11
<i>Total</i>	<i>336</i>

Environmental Incidents

Number of Air Incidents 2007-2013



What's working with the plan

- Relatively straightforward
- Fewer consents needed overall compared to other plans.
- Many activities permitted – avoidance cross boundary effects

What is not working - General

- Structure/ form/explanations of some rules could be simpler
- Inconsistencies with other regional plans.
- Rules are same almost everywhere?
- Consented discharges must reapply as discretionary activity?
- Some discharges with minor effects needing consent?

What is not working - Smoke/Spray



Complaints



Open Burning



Incinerators



Spraying

Other issues...dust, odour

Earthworks



Animal Effluent



Landfill Gas



Putting Nor

Abrasive blasting



Discussion

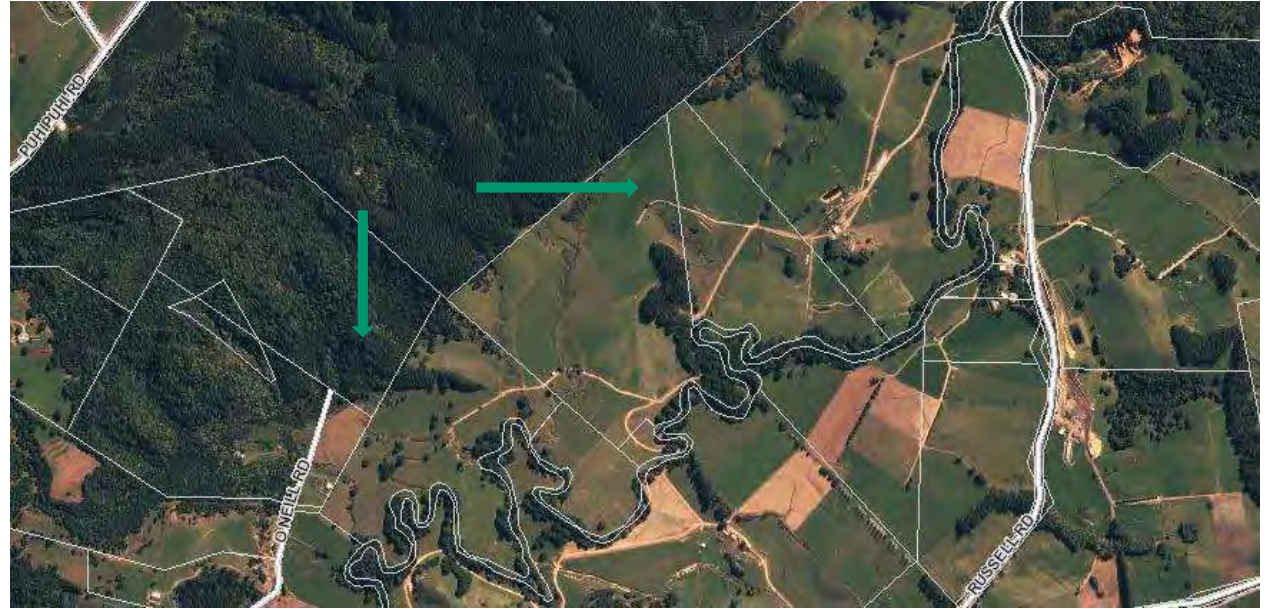
- Do you agree with the issues?
 - General?
 - Resource specific?
- Are there issues that we have missed?

What are the solutions - General

- Reduce rule repetition – one regional plan?
- Review list of permitted activities – Appendix 5
- More tailored rules based on receiving environment?
- Clearer explanations, less jargon

What are the solutions – Smoke/Spray

**Increase in
notification
(large scale
burning,
aerial spraying)**



What are the solutions – Smoke/Spray

- Clearer spraying rules
- Consent/standards for commercial incineration in Whangarei
- More guidance/standards on preventing smoky fires

Other possible tweaks...dust, odour

Earthworks



Animal Effluent



Landfill Gas



Abrasive blasting



Discussion

- Do you agree with the solutions?
 - General?
 - Resource Specific?
- Are there solutions that we have missed?

Wrap up



Next steps

Workshops – Oct 2014

Review complete – Dec 2014

Draft regional plan released – mid 2016

Proposed regional plan notified – mid 2017

Workshop evaluations



Thank you

Jon Trewin

Policy Analyst



09 470 1215



jont@nrc.govt.nz



www.nrc.govt.nz



Follow us on
Twitter

[Twitter.com/NRCexpress](https://twitter.com/NRCexpress)

Stay connected



0800 002 004



www.nrc.govt.nz



24/7 Environmental Hotline
0800 504 639

