

Harbourmaster's Office

# Superyacht Guide | Northland

Navigation Safety Operating Requirements



# CONTENTS

Document Control.....	3
Introduction .....	4
Definitions .....	4
Application .....	4
Section One: General .....	5
Overseas Arrivals.....	5
Passage Plans .....	5
Notification Requirements.....	5
Machinery and Equipment.....	5
Radio Stations .....	6
Section Two: Compliance.....	6
Hot work operations .....	7
Sewage discharge rules.....	7
Reporting oil pollution .....	7
Section Three: Pilotage Areas and Harbour Limits .....	7
Bay of Islands .....	8
Whangārei.....	9
Whangaroa Harbour .....	9
Restricted areas .....	10
Poor Knights Area to be Avoided (ATBA) .....	10
Biosecurity, fishing and conservation restrictions.....	10
Contact Information.....	11

# Document Control

[illegible]

# Introduction

This guide outlines requirements for superyachts visiting Northlands's coast. The Northland Regional Council has a statutory role in ensuring navigation safety along Northland's coastline which is managed by the Regional Harbourmaster.

The purpose of this guide is to ensure the safe navigation of all vessels and ensure safe interaction of superyachts with other harbour users.

## Definitions

**"Superyacht"** means a vessel of 40 metres length overall or greater used by the owner and their guests and does not include any vessel that:

- i. carries cargo,
  - ii. carries more than 12 passengers, and/ or
  - iii. is a fishing vessel,
- whether or not it is used for such purposes at that time.

**"Northland Region"** means the area north of the Auckland region. It stretches from south-east of Mangawhai across to the Kaipara Harbour and all the way up to New Zealand's northernmost tip, Cape Reinga.

## Application

This guide applies to the waters in estuaries, inlets, harbours and along the Northland coast between the following boundaries:

- a. the outer boundary being 12 nautical miles from the shore; and
- b. the inner boundary being the line of mean high-water springs, except where the line crosses a river, in which case the inner boundary is deemed to be the landward boundary of the Coastal Marine Area as defined in the Regional Plan for Northland.



# Section One: General

## Overseas Arrivals

The approved ports of first arrival in Northland are:

- Opuā Marine Park, Opuā
- Marsden Cove Marina, Whangārei.

An Advanced Notification of Arrival must be submitted to New Zealand Customs at least 48 hours prior to a vessel's arrival in New Zealand territorial waters (12 nautical miles off the coast). More notice is recommended if the vessel is too large to navigate to Ōpuā, alternative provisions for inspection at an anchorage off Russell will be required. The Harbourmaster can assist with these arrangements.

On arrival all yachts and small craft will receive the New Zealand Border Agencies information pack, which lists customs, quarantine, immigration and Maritime New Zealand requirements. Biosecurity is a key focus in New Zealand and vessels are required to bag and seal all rubbish for safe disposal. Vessels are advised to run down their fresh stores before arrival.

## Passage Plans

A master of a superyacht must make use of a passage plan for every intended voyage and/or vessel movement. Where the superyacht is 500 gross tonnes or greater and entering Northland harbours, passage plans for the harbour approach and inner harbour movements must be approved by the harbourmaster.

The passage plan can be a scanned copy of the largest scale navigation chart for the areas showing courses and intended anchorages, along with specifications of vessel draft and length overall. Alternatively, a detailed description by passages and bays with intended timings will be acceptable.

## Notification Requirements

All superyachts visiting Northland must send daily position notifications to the Harbourmaster detailing area and harbour, while on the Northland coast. This can be via email and is required for safety and emergency response purposes. The report should be in one of the following formats:

- **At sea:** Departure point, destination, ETA
- **At anchorage:** Location by area and harbour, ETD and next destination.

A contact number should be provided in case of emergency.

Pilotage is compulsory in the Bay of Islands or Whangārei Pilotage Areas, charges apply for each visit.

A navigation and safety services fee may apply depending on vessel size, this contributes to the upkeep of the region's maritime activities e.g. buoys and beacons and lights etc.

The current User Fees and Charges Policy can be viewed on the [Northland Regional Council website](#).

## Machinery and Equipment

Vessels entering Northland harbours should have all machinery and equipment in good working order. Any defects should be notified to the Harbourmaster before the vessel enters Northland.

Vessels should be navigating using up-to-date charts of the largest available scale.

- Masters should consult the New Zealand [Notices to Mariners](#) for latest updates.
- Anchors should be cleared away and ready for use in good time.
- Steering should be hand steering or, as a minimum, a helmsman manning the helm station inside the harbour limits.
- Engines should be immediately available for reducing speed, stopping or reversing at all times without delay.
- AIS, if fitted, should be switched on and transmitting correct static and dynamic data whenever the vessel is underway or at anchor.

## Radio Stations

Radio stations		Private radio stations	
<b>Coastguard VHF channels</b>		<b>Whangārei Harbour Radio</b>	<b>Russell Radio</b>
<b>Hokianga Harbour</b>	Coastguard VHF channel 65	Northport Commercial & Shipping	VHF channel 63
<b>Whangaroa Harbour</b>	Coastguard VHF channel 05	VHF channel 16 and 11 (continuous)	Watch times: 0900 – 1900 hrs
<b>Bay of Islands and Kerikeri Inlet</b>	Coastguard VHF channel 04	Watch times: 24/7	Coverage: Tutukaka Gables to Cape Karikari
<b>Whangaruru, Whananaki and Tutukaka</b>	Coastguard VHF channel 62	Phone 09 432 5018	Russell Wharf
<b>Whangārei Harbour and Bream Bay</b>	Coastguard VHF channel 05		Phone 09 403 7218
<b>Mangawhai Harbour</b>	Coastguard VHF channel 05	<b>Far North Radio</b>	
<b>Outer Hauraki Gulf</b>	Coastguard VHF channel 60	VHF 60 East Coast, Cavallis to North Cape	
<b>Kaipara Harbour</b>		VHF 61 North Cape to Three Kings	
North Kaipara	Coastguard VHF channel 66, 61	VHF 02 West Coast, Whangape to North Cape	
South Kaipara	Coastguard VHF channel 07	Phone 09 406 1423	
<b>Maritime Radio VHF stations</b>		<b>Marina channels</b>	
Cape Reinga Maritime Radio	VHF CH: 16, 68	Whangaroa (limited reception) VHF channel 64	Mobile 021100 0804
Kaitia Maritime Radio	VHF CH: 16, 71	Kerikeri	Phone 09 407 9434
Whangārei Maritime Radio	VHF CH: 16, 67	Ōpua (Bay of Islands)	VHF channel 73 Phone 09 402 7124
Great Barrier Maritime Radio	VHF CH: 16, 69	Tutukaka	VHF channel 07 Phone 09 434 3441
Auckland Maritime Radio	VHF CH: 16, 71	Marsden Cove	VHF channel 18 Phone 09 432 7740
		Whangārei	VHF channel 18 Phone 09 438 2033
		Hātea River Bridge Control	VHF channel 18/10 Phone 09 438 7261
		Far North Holdings, Wharves	Phone 09 402 7124

## Section Two: Compliance

The master is responsible for the safe navigation of their vessel and must comply with the Maritime Rules, Bylaws, and Harbourmaster Guidelines. The latest copy of the bylaws and other local rules can be downloaded from [the Northland Regional Council website](#).

National rules exist such as 5 knots within 200m of the shore. More detailed local bylaws cover use of jetskis, board sports, lifejacket requirements and local area specific rules for example. Tenders must comply with the '5 knot rule' and all other relevant parts of the Navigation Safety Bylaw, including not creating a wake that causes a hazard. Look out for 5 knot buoys and signs that mark the slow down areas.

## Hot work operations

Within the Northland region, the person in charge of a vessel on which hot operations are to be carried out and the person who intends to conduct hot work operations on vessel must:

- a. obtain the written approval of the owner or manager of the berth at which the operations are to be conducted
- b. ensure the operations do not occur at the same time as any bunkering operations involving the vessel; and
- c. ensure all precautions have been taken to detect, prevent, and extinguish fire that could result from the operations on the vessel or elsewhere until the operations are complete.

A person conducting hot work operations on a vessel must comply with relevant codes of safe working practice.

## Sewage discharge rules

Discharge of sewage from vessels is viewed very seriously in Northland and there are strict rules covering sewage discharges in Northland waters.

It is illegal to discharge untreated sewage into any coastal waters that are:

- Shallower than five metres
- Less than 500 metres from the high tide mark
- Less than 500 metres from a marine farm or a gazetted Maitaitai Reserve
- Less than 200 metres from a marine reserve
- Within all Northland harbours and the Bay of Islands.

Discharge from an approved sewage treatment system is permitted in compliance with MARPOL requirements; however, the Northland Regional Council prefers a zero discharge policy within its harbours. In the absence of approved treatment systems, holding tanks are acceptable; however, the capacity of such holding tanks should be sufficient for the number of people on board for the duration of stay – if not, the vessel will be required to leave the harbour.

## Reporting oil pollution

All incidents of oil pollution should be immediately reported to the [Northland Regional Council's 24/7 environmental hotline](#) on freephone 0800 504 639.

# Section Three: Pilotage Areas and Harbour Limits

The only suitable harbours for superyachts in Northland are Whangaroa, the Bay of Islands and Whangārei. The harbourmaster may permit entry to other harbours on a case-by-case basis.

Maritime Rule Part 90 requires that every vessel of 500 Gross tonnage or greater carries a licensed pilot when navigating within the Bay of Islands or Whangārei Pilotage Areas.

The Harbourmaster should be notified a minimum of two working days prior to arrival into the Northland Region, preferably through a local agent. The notice should specify if the vessel will enter pilotage limits so a pilot can be arranged by the Harbourmaster.

An early enquiry through local agents is advisable to avoid last minute delays.

Pilot availability in the Bay of Islands is limited in capacity as it is not a 24/7 port. Anchoring outside the pilotage limits and using ships tender will ensure full flexibility on schedules and movements.

## Bay of Islands

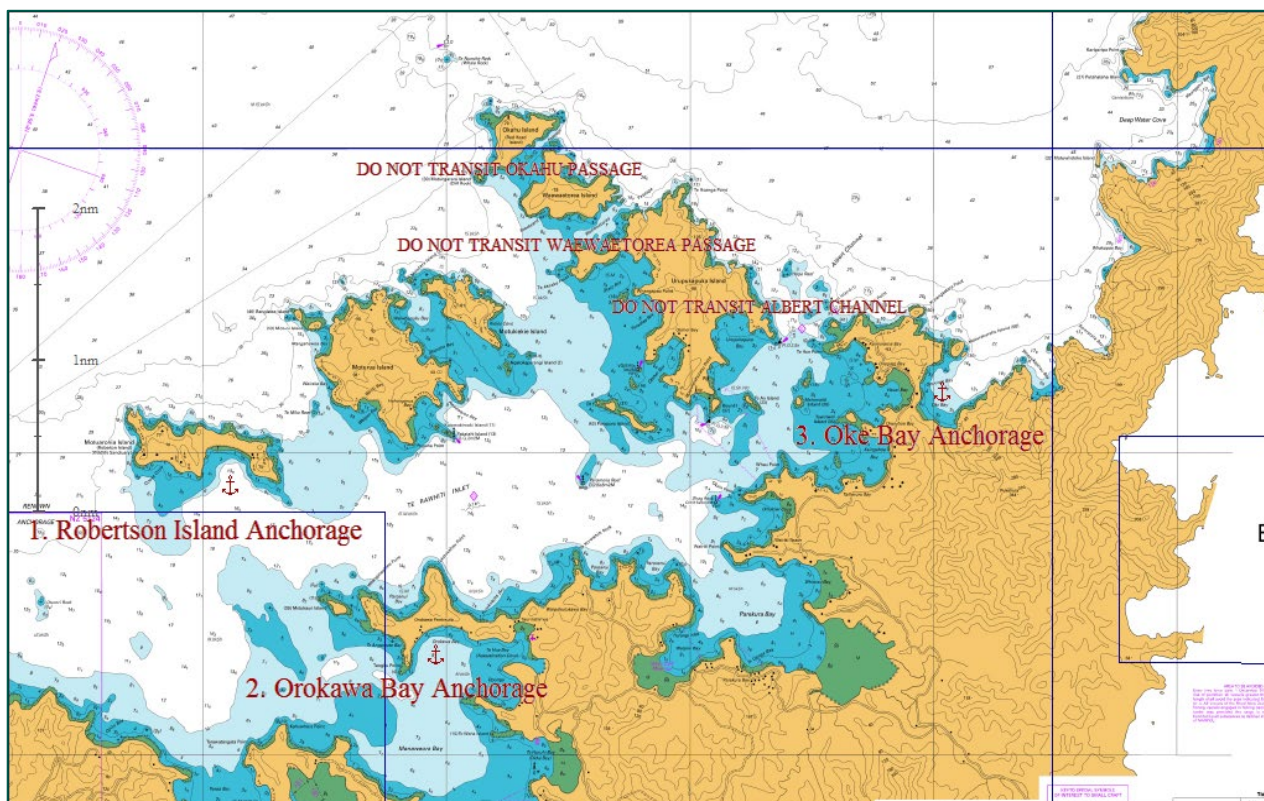
The pilotage limits and harbour limits for the Bay of Islands are shown on chart NZ 5125.

Masters of superyachts entering the Bay of Islands harbour but not passing the pilotage limits are permitted to anchor at a suitable location. Anchoring within the sector limits of the Bay of Islands directional light is prohibited.

Superyachts should avoid anchoring near the cruise ship anchorages detailed below. Anchorage No.3 is in front of Russell; if no ships are booked this position may be available, this can be verified by the Harbourmaster.

A superyacht berth is available at Opuia Marina, contact [Far North Holdings](#) for availability.

Cruise Ship Anchorage Information					
Anchorage Number	Latitude	Longitude	Charted Depth	Max Draught	Max Length
1	35° 15'.28S	174° 06'.27E	12.0m	10.0m	330m
1A	35° 15'.26S	174° 06'.20E	12.5m	10.5m	350m
Central	35° 15'.20S	174° 06'.05E	12.5m	10.5m	350m+
2	35° 15'.09S	174° 05'.87E	11.0m	9.2m	300m
2A	35° 15'.12S	174° 05'.93E	11.5m	10.5m	350m
3	35° 15'.76S	174° 06'.62E	10.0m	8.3m	170m



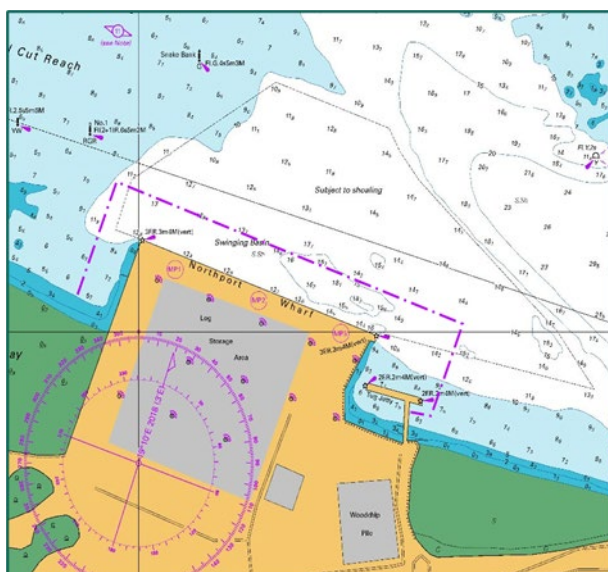
## Whangārei

The harbour limits for Whangārei are shown on charts NZ 521 and NZ 522. The pilotage limits for Whangārei are shown on chart NZ 5214. Whangārei is a commercial port with deep draft tanker and freighter calls. The safe passage of such vessels should not be obstructed.

Pilotage is provided by [North Tugz](#), contact them direct for bookings.

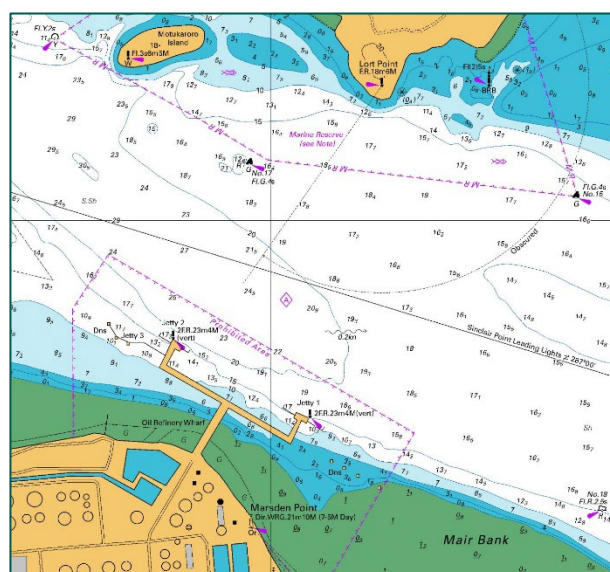
Masters of superyachts entering Whangārei Harbour but not passing the pilotage limits are permitted to anchor at a suitable location.

There are restricted areas surrounding Marsden Point and Northport where entering or anchoring is prohibited without prior permission from the Harbourmaster or Whangārei Harbour Radio.



### Northport Berth Prohibited Area

All that area enclosed by the pecked line shown on nautical chart NZ 5214 which surrounds the berths at Marsden Point.



### Marsden Point Prohibited Area

All that area enclosed by the pecked line which surrounds Northport berths. When ships are fumigating, bunkering, discharging or loading dangerous cargo, an additional 100 metre exclusion zone will be in force around the ship and exists for all water users. KEEP CLEAR 100 metre fluorescent signs (by day) and flashing lights (by night) are displayed on the seaward side of the ship.

## Whangaroa Harbour

Vessels up to 100 metres in length, and/or 4.0 metres in draft and/or a maximum of 4000 gross tonnes may enter Whangaroa Harbour without a pilot. The harbour is not suitable for vessels over this size. Pilotage is not compulsory however masters not familiar with the harbour should contact the Harbourmaster for local advice prior to arrival.

The harbourmaster will also require the master to submit passage plans for inward and outward passages, showing intended anchoring positions, speeds and abort points.

Arrival/ departure should be during daylight hours. If visibility is restricted at the entrance, entry should be delayed. Fog normally clears approximately an hour after sunrise.

## Restricted areas

### Poor Knights Area to be Avoided (ATBA)

An IMO ATBA is in force around the Poor Knights islands northeast of Tutukaka. See maritime rule part 190 for details. Vessels over 45 metres in length are not permitted to enter this ATBA.

Whangamumu, Whangaruru, Tutukaka, Ngunguru and other harbours situated within latitudes 35° 10.20' S to 35° 51.30' S are inaccessible to vessels over 45 metres in length due to the existence of this ATBA.

This is a prohibition that is remotely monitored and enforced by Maritime New Zealand. Access to this area is by application to Maritime New Zealand. The harbourmaster has no jurisdiction regarding ATBAs.



### Biosecurity, fishing and conservation restrictions

These include no fishing areas, No anchoring areas and marine mammal sanctuary. Please see the regional council website Good to go for Summer.

## Contact Information

Organisation	Contact Details	Services Provided
<a href="#">Northland Regional Council</a> (Harbourmaster)	+64 9 470 1200 (Monday to Friday 0730 to 1600)	Harbourmaster
	0800 504 639 (24/7 incident hotline)	
	harbourmaster@nrc.govt.nz	
<a href="#">Far North Holdings</a>	+ 64 9 402 5659	Manages most berth facilities and piers in the Far North
	enquiries@fnhl.co.nz	
<a href="#">Whangaroa Marina</a>	+64 9 405 0505	Manages Whangaroa Marina, a good landing point for town
	manager@whangaroamarina.co.nz	
<a href="#">NorthTugz</a>	+64 9 432 8452	Whangārei pilotage
	ntops@northtugz.co.nz	
<a href="#">Port Nikau</a>	+64 27 423 8064	Lay-up berths
	marine@portnikau.nz	
<a href="#">Herons Shipyard</a>	+64 9 438 0753	Repair Facilities
	Spencer@shiprepair.co.nz	
	279 Port Rd, Whangarei, NZ	
<a href="#">Circa Marine &amp; Industrial Ltd</a>	+64 9 438 9522	
	peter@circamarine.co.nz	
	245 Lower Port Road, PO Box 571, Whangarei	
<a href="#">Oceania Marine</a>	+64 9 430 3148	
	+64 21 02689744 (24 hour mobile)	
	info@oceaniamarine.co.nz	