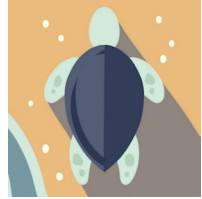
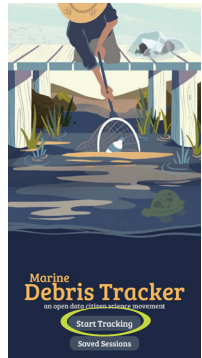


How to use the Marine Debris Tracker (MDT) app

1 Download the Marine Debris Tracker app on App Store or Google Play



2 Open the App, click on 'Start Tracking'



3 Select the right project by scrolling down the list and click on 'Use this list'

Choose a List

TAI TOKERAU DEBRIS MONITORING PROJECT

5,142 items
logged by users so far!

Top Trackers	
1	stredproject 2,429 items
2	walmsoner 2,226 items
3	stredproject 481 items
4	stredproject 47 items
5	Kinghunters 31 items

Use This List

4 Record each item collected and your path

a) Find your item among the various categories available and click on 'Add' to record it along with its GPS location

0 Items Collected

Sections

- PLASTIC
- FOAMED PLASTIC
- GLASS & CERAMIC
- METAL
- PAPER/CARDBOARD
- RUBBER
- CLOTH
- WOOD
- OTHER ITEMS
- FAVORITES

Use the arrows if you have more than one of the same items in the same location

PLASTIC

1 Add

Balloons - Mylar

1 Add

Baskets, crates & trays

4

b) Ensure that your "Location" is on and click on the 'Play' icon to record your path



TIP ONE » Ensure that your item was recorded by checking the total tally in the top left corner of the screen. You can also set your phone to vibrate when an item is recorded under settings. It might take a few seconds for the item to be recorded.



TIP TWO » You can also add a description if unsure about the item(s) found by clicking on the 'i- information' icon.



TIP THREE » You can add any item to your 'favourites' category by clicking on the star icon, which will now be orange. You can then access those items faster.



TIP FOUR » Use the white arrow in the bottom right corner to get back to the top and select the appropriate category.



TIP FIVE » If you made an error, click on the orange arrow in the top right corner, find your item on the map and delete it.

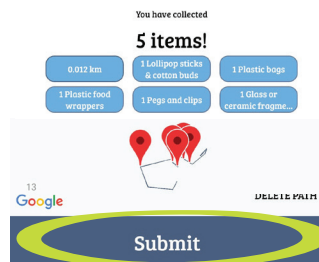


4

c) At the end of your survey, click on the 'Pause' icon to stop the path recording before submitting your data.



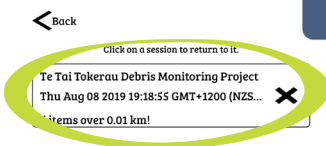
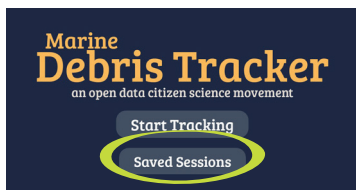
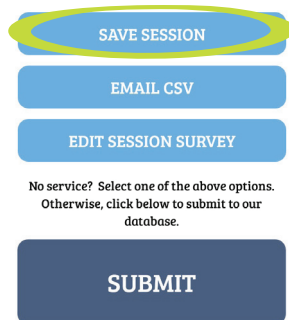
d) To submit your data, click on the orange arrow in the top right corner. A new page will appear, then click on 'Submit'.



5

If you are offline, select 'Save Session'. Otherwise, click on 'Submit'.

When online, click on 'Saved Session', select your survey and follow step 4.



Please send photos of your clean-up, including all the items collected; to ttdproject@gmail.com

