

Map A12

Ahipara Bay



Map Scale
1 : 100000

LEGEND LOCATED AT BACK
OF MAP FOLDER

Topographical and Cadastral Information
derived from Land Information NZ.
CROWN COPYRIGHT RESERVED

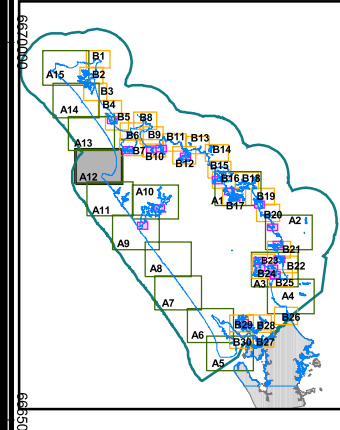
Map grid values are shown in
NZMG co-ordinates, GD 1949.

These maps are an indicative representation,
for more specific information contact the NRC.

The RCP for Northland covers the coastal
marine area which extends from the landward
extent of Mean High Water Springs and the
negotiated cross river mouth boundary to the
12 Nautical Mile limit.

Caution: This map should not be used
for navigational purposes.

Locality Map:



CARING FOR NORTHLAND AND ITS ENVIRONMENT