

19/09/2020

Colin Leach
Chairman, Mangawhai Historic Wharf Trust

cc: Moira Jackson
James Robinson (Heritage New Zealand)

Via email: colin@leach.nz ; moira.jaxon@gmail.com ; jrobinson@heritage.org.nz

FILE NOTE, MANGAWHAI HISTORIC WHARF (R08/222)

1. Subsurface Ltd was invited by Colin Leach of the Mangawhai Historic Wharf Trust to inspect the intertidal remains of the Mangawhai wharf on 15 September 2020. The inspection was carried out by maritime archaeologists Andy Dodd and Kurt Bennett between 11.30 am and 2.30 pm on the incoming low tide.
2. These preliminary notes are intended to advise the resource consent hearing. It does not constitute a full archaeological assessment.
3. The remains of the original 1881 wharf are part of a recorded archaeological site R08/222 (filed by Moira Jackson March, 2017). A preliminary archaeological assessment has been prepared for the Trust which contains detailed historic background:

Jackson, M., 2018, *Preliminary Archaeological assessment of Proposed Wharf at Mori St, Mangawhai Village*. Unpublished report prepared for Mangawhai Historic Wharf Trust

4. During the site visit 35 truncated piles were surveyed using DGPS, as well as the ballast row and two likely ballast piles either side of the wharf structure. All features surveyed were either exposed at low tide or in less than 0.5m of water. Additional unsurveyed piles were noted underwater in the channel, which are likely to require the use of SCUBA to complete the recording, or possibly from a small boat tethered to the marker buoy at slack low tide.
5. Intertidal and underwater archaeological remains may include structural elements (wooden piles), ballast deposits and discarded items (eg. artefacts, offcuts from repair work) from the duration of the period while the wharf was in use. When buried these features have depositional context in much the same way as terrestrial archaeological remains and can be investigated and recorded using archaeological methods. The extent of these deposits is likely to extend into the channel below the area where vessels were berthed alongside the outer T.
6. The following images give an indication of the visible remains.



Figure 1: Surveyed pile alignment shown on 2014 aerial (15.09.2020)

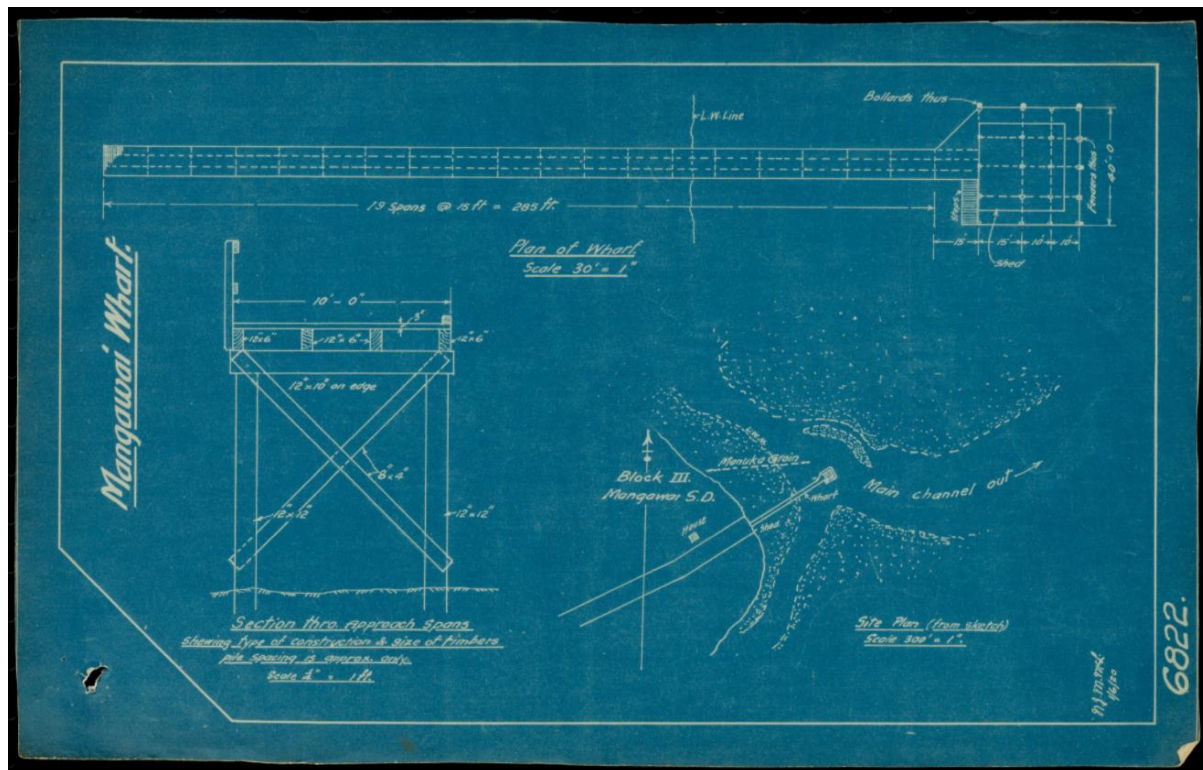


Figure 2: Archival plans of the wharf dated 1920 (supplied by Mangawhai Historical Wharf Charitable Trust)



Figure 3: Overlay of archival plans onto aerial showing alignment of piles as built (note plans state “pile spacing is approximate only”)



Figure 4: Detail from Whites Aviation oblique aerial of wharf taken 04.04.1955.¹



Figure 5: Detail of wharf 1918.²

¹ Mangawhai, Northland, showing jetty and houses. Whites Aviation Ltd: Photographs. Ref: WA-37902_F. Alexander Turnbull Library, Wellington, New Zealand. <https://natlib.govt.nz/records/23524522>

² Mangawhai Museum object number 17-8 <http://www.nz museums.co.nz/account/3023/object/812402>



Figure 6: Low tide 11.36 am (15.09.2020)



Figure 7 Three quarter tide 3.50 pm (15.09.2020)



Figure 8: End of the ballast groyne and pile alignment at low tide, vertical scale in water is 750mm, in 250mm increments



Figure 9: End of the ballast groyne and pile alignment at low tide, vertical scale in water is 750mm, in 250mm increments



Figure 10: Groyne and southeast side pile alignment (scale increments 200mm)



Figure 11: Groyne and southeast side pile alignment (scale increments 200mm)



Figure 12: Remnant pile (scale increments 250mm)



Figure 13: Double pile indicating strengthening or repair work (scale increments 200mm)

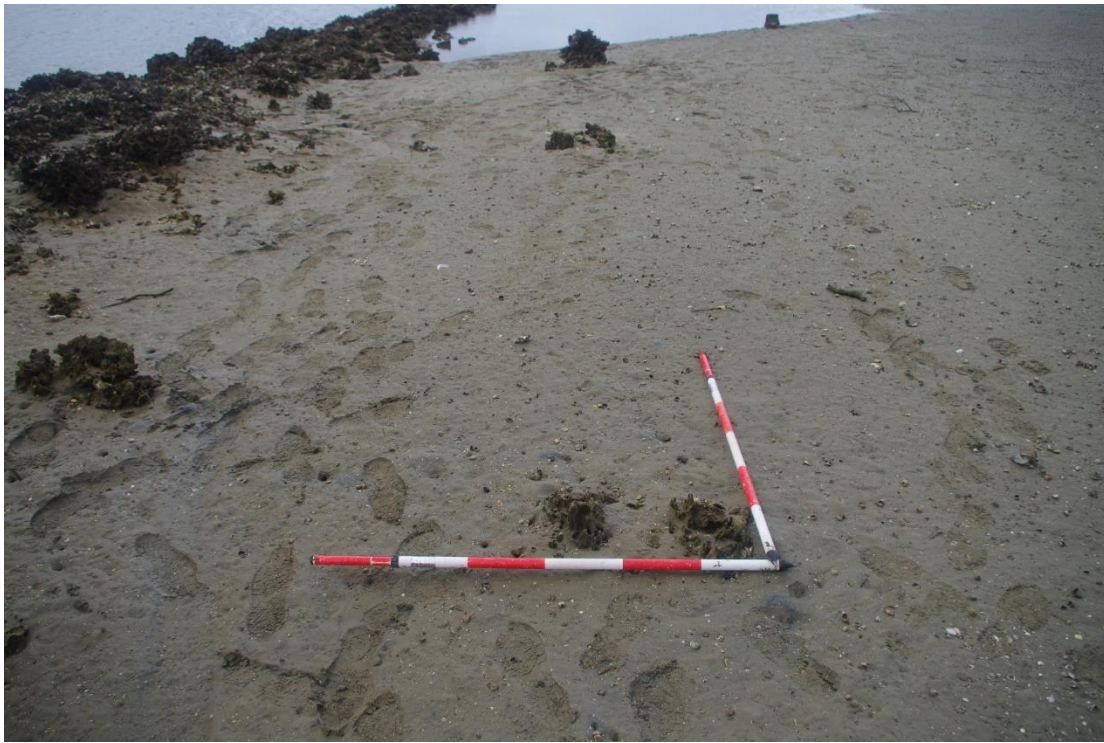


Figure 14: Double piles indicating strengthening or repair work (scale increments 200mm)



Figure 15: Pile truncated at level of mudflat (scale increments 200mm)



Figure 16: Taller remnant pile at shore end (scale increments 200mm)



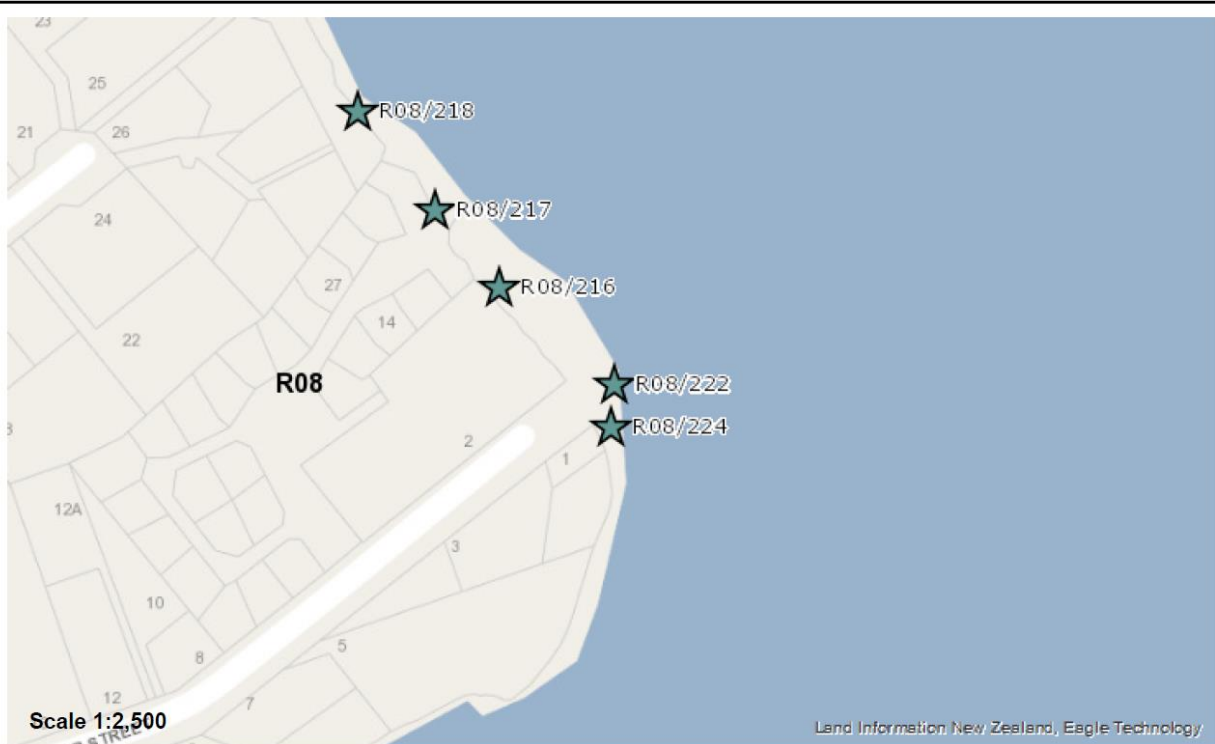
Figure 17: Ballast groyne, Looking southwest from outer end (scale increments 200mm)



Figure 18: Southwestern end of ballast groyne (scale increments 200mm)



Figure 19: Nineteenth century black beer bottle glass is abundant in the intertidal area close to the escarpment

**Site Record Form****NZAA SITE NUMBER:** R08/222**SITE TYPE:** Commercial**SITE NAME(s):****DATE RECORDED:****SITE COORDINATES (NZTM) Easting:** 1742249**Northing:** 6001176**Source:** On Screen**IMPERIAL SITE NUMBER:****METRIC SITE NUMBER:** R08/222**Finding aids to the location of the site**

End of Moir Street adjacent to Registered Historic Mangawhai Hotel

Brief description

Site of 1880s Mangawhai Wharf.

Recorded features

Wharf/ jetty

Other sites associated with this site

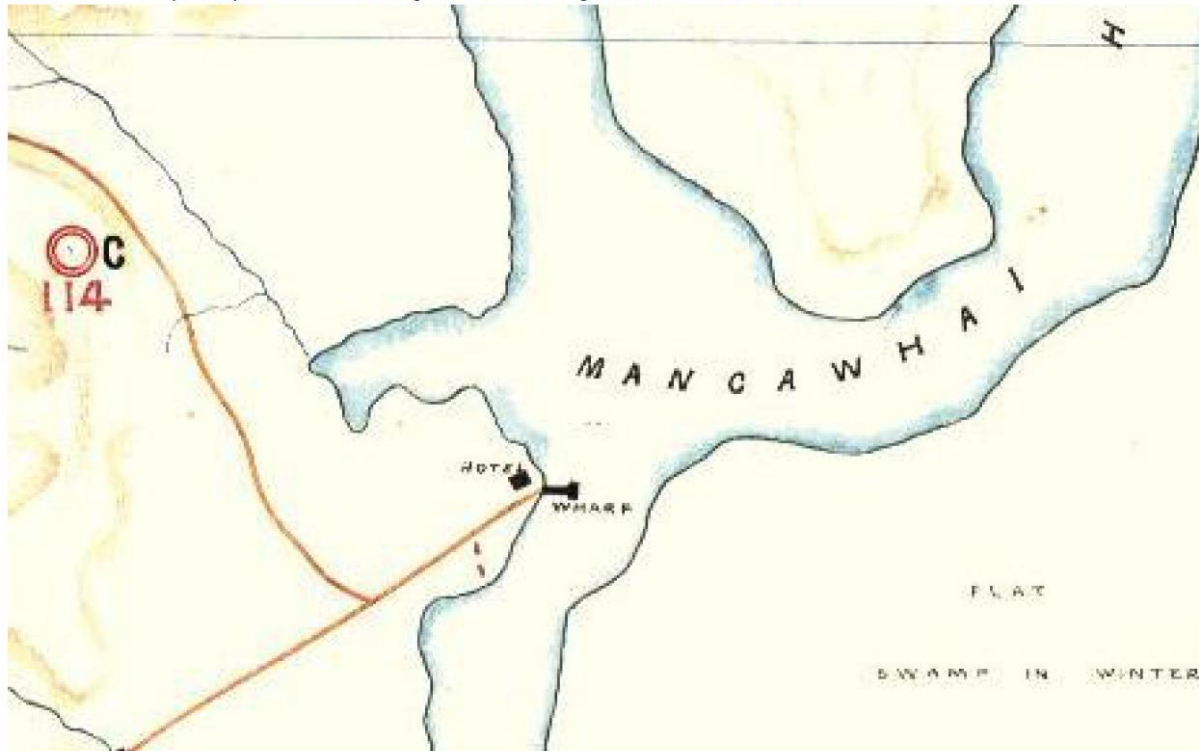
SITE RECORD HISTORY	NZAA SITE NUMBER: R08/222
<p>Site description</p> <p>Updated 25/06/2017 (Field visit), submitted by moirajackson , visited 30/03/2017 by Moira Jackson Grid reference (E1742249 / N6001176)</p> <p>Site of 1880s Mangawhai Wharf.</p> <p>Condition of the site</p> <p>Updated 27/04/2017 (Field visit), submitted by moirajackson , visited 30/03/2017 by Moira Jackson</p> <p>The 1880s wharf has now been demolished but its substructure is present and extends out into the estuary best visible at low tide.</p> <p>There are plans within the local Mangawhai community to re-establish a wharf in the same place</p> <p>Statement of condition</p> <p>Updated: 25/06/2017, Visited: 30/03/2017 - Poor - Visible features are incomplete, unclear and/or the majority have been damaged in some way</p> <p>Current land use:</p> <p>Updated: 25/06/2017, Visited: 30/03/2017 - Coastal margins</p> <p>Threats:</p> <p>Updated: 25/06/2017, Visited: 30/03/2017 - Road/ track formation or maintenance, Tree planting (other than forestry), Property development, Services/ utilities</p>	

SITE RECORD INVENTORY

NZAA SITE NUMBER: R08/222

Supporting documentation held in ArchSite

Detail of 1882 topo map SO 2966 showing location of Mangawhai Hotel and Wharf



NEW ZEALAND ARCHAEOLOGICAL ASSOCIATION

Part of old wharf site taken from walkway by Historic Hotel - note old timber post. MJackson 30/03/2017



NEW ZEALAND ARCHAEOLOGICAL ASSOCIATION

The approach to the site of the 1880s historic wharf at the end of Moir Street - M Jackson 30/03/2017.

