

# Te Pae Tawhiti

## Our vision



2021-2031



**Toitū te whenua**

If the land is well

**Toitū te moana**

If the sea is well

**Toitū te tangata**

The people will thrive

This document focuses on the community outcomes that Northland Regional Council wants to achieve, and how we're playing our part to make our incredible region really thrive.

It shows the wide range of work we do (often in partnership with others), and the work we've planned through our Long Term Plan 2021-2031 to care for the *natural environment, te taiao*; to improve *community resilience, he hāpori manawaroa*; and to show *regional leadership, hautūtanga ā rohe*.

In these pages, we'll explain what council's long-term aims are for the region, and what we plan to deliver to make a real difference over the next three and 10 years.

# Te mahere rautaki a te kaunihera

## Council's strategic direction

### Vision

Ka whai hua tātou  
to tātou Taitokerau  
Our Northland  
together we thrive

### Mission

Working together to create  
a healthy environment,  
strong economy and  
resilient communities





## Ngā whakataunga ā hapori Community outcomes

### **A strong and sustainable regional economy**

A sustainable economy, supporting a healthy standard of living and wellbeing in Te Taitokerau.

### **Healthy waters for the environment and our people**

The fresh and coastal waters of Te Taitokerau are clean and abundant, supporting a healthy environment and the needs of our people.

### **Protected and flourishing native life**

The incredible array of native taonga in Te Taitokerau is treasured and protected, on land and in the water.

### **Safe and effective transport networks connecting our region**

Transport networks are safe, well organised and increasingly low emission, connecting communities and supporting our regional economy.

### **Resilient, adaptable communities in a changing climate**

Communities are well prepared for the growing effects of climate change and the hazards our region faces, such as droughts and floods.

### **Meaningful partnerships with tangata whenua**

Strong outcomes for Māori through enduring relationships between iwi/hapū and council.

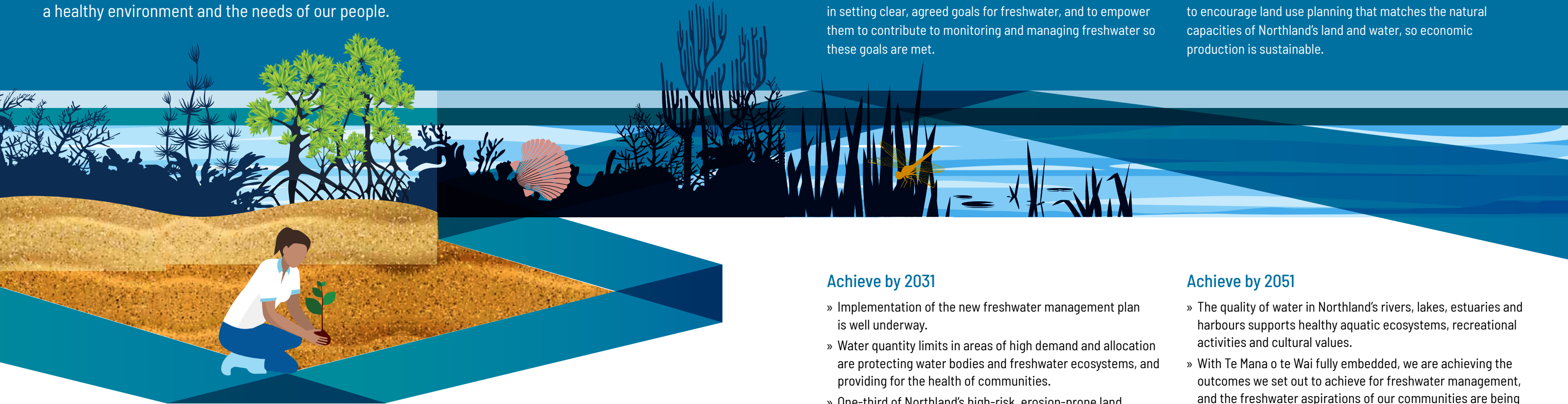
# NGĀ WAIORA I TE TAIAO ME TŌ TĀTOU IWI

## HEALTHY WATERS FOR THE ENVIRONMENT AND OUR PEOPLE

We want the fresh and coastal waters of te taitokerau to be clean and abundant, supporting a healthy environment and the needs of our people.

The direction of our work is centred around the concept of Te Mana o te Wai – this means protecting the health and wellbeing of the water, and providing for the needs of people’s health before enabling other uses of water. Implementing Te Mana o te Wai also means involving tangata whenua and communities in setting clear, agreed goals for freshwater, and to empower them to contribute to monitoring and managing freshwater so these goals are met.

There are some challenging issues to tackle: high levels of sediment (which is why soil conservation remains a big focus), nutrient levels and faecal contamination. As the climate changes, water conservation and security of supply are increasingly important concerns too. In future, we want to encourage land use planning that matches the natural capacities of Northland’s land and water, so economic production is sustainable.



### What we want to achieve by 2024

- » A proposed new freshwater management plan has been developed and released for public submissions, which will set aspirational outcomes for Northland’s freshwater.
- » Te Mana o te Wai is embedded across all council’s freshwater management activities.
- » Improved freshwater quality monitoring network, up and running.
- » The resilience and reliability of water supplies, especially drinking water, continues to improve.
- » Mapping and new monitoring programmes are in place for natural wetlands, threatened freshwater species, and river extent.
- » A refocused landowner advice and grant funding scheme, is in place, targeting highly erodible land and protecting our sensitive environments such as dune lakes, wetlands and estuaries.
- » Natural wetlands are identified and protected; restoration and enhancement are proactively encouraged.
- » All community wastewater and stormwater discharges have up-to-date resource consents, and all conditions are met.
- » Aquatic ecosystems and habitats particularly vulnerable to the effects of climate change are identified, and work continues to improve their resilience.

### Achieve by 2031

- » Implementation of the new freshwater management plan is well underway.
- » Water quantity limits in areas of high demand and allocation are protecting water bodies and freshwater ecosystems, and providing for the health of communities.
- » One-third of Northland’s high-risk, erosion-prone land is under soil conservation management.
- » Northland is more resilient to the effects of climate change and droughts through efficient use and storage of water.
- » The trend of net wetland loss is reversed, so wetland creation and restoration exceeds wetland loss.

### Achieve by 2051

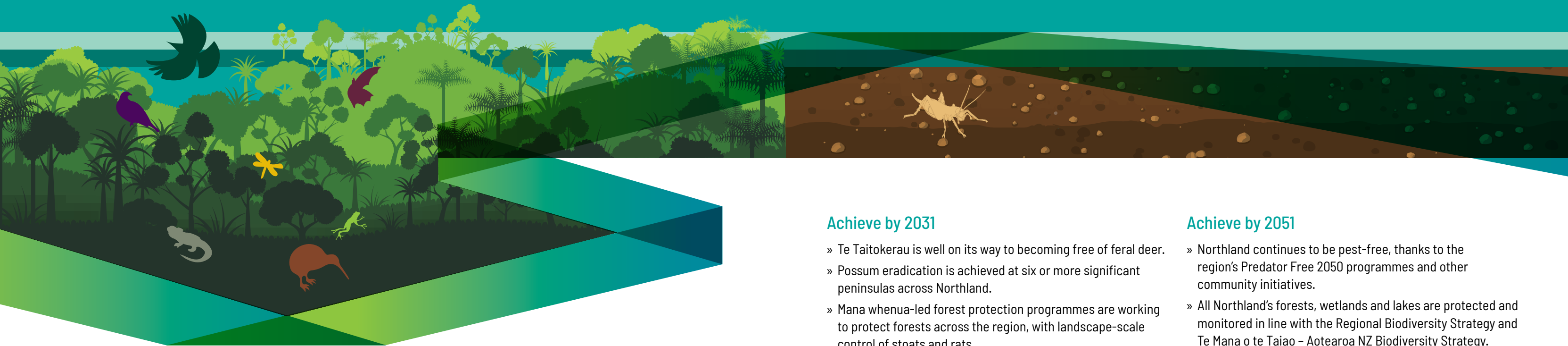
- » The quality of water in Northland’s rivers, lakes, estuaries and harbours supports healthy aquatic ecosystems, recreational activities and cultural values.
- » With Te Mana o te Wai fully embedded, we are achieving the outcomes we set out to achieve for freshwater management, and the freshwater aspirations of our communities are being realised.
- » All Northland’s high-risk, erosion-prone land is under soil conservation management.
- » Northland is a leader in sustainable land use and water management practices.

# KO NGĀ KOIORA TAKETAKE E NOHO HAUMARU ANA, E PUAWAI ANA PROTECTED AND FLOURISHING NATIVE LIFE

We want to see the incredible array of native taonga in Te Taitokerau treasured and protected, on land and in the water.

This isn't a job for council alone – we need the entire community to come together for biodiversity and biosecurity. We want to be part of a regionwide collective of agencies, iwi/hapū and caring communities, working to eradicate possums across the entire Northland region and have significant, landscape-scale areas free of rats and mustelids.

Whānau, hapū and iwi will be acknowledged as kaitiaki of natural and cultural resources, and actively involved in managing the environment. Ultimately, we want to see the decline in biodiversity halted and reversed, resulting in long-term recovery of threatened species. We're working toward these goals by providing ongoing funding to support the incredible work local groups are doing to get rid of pests and help our native life flourish.



## What we want to achieve by 2024

- » At least one more High Value Area (biosecurity) is added to Northland, and at least one more Predator Free 2050 programme is developed.
- » A fully funded, collaborative deer eradication programme has been agreed on and is being implemented.
- » Work to stop the spread of kauri dieback, and implement new technologies, continues in partnership with other agencies, landowners and tangata whenua.
- » Site-specific biodiversity restoration plans are making progress at priority sites, and we're developing a Regional Biodiversity Strategy with our partners.
- » A risk assessment of the impact of sea-level rise on mangroves, saltmarsh and seagrass habitats is complete.
- » Carry out preliminary review of high-risk sleeper and offshore biosecurity threats under future climate change scenarios.

## Achieve by 2031

- » Te Taitokerau is well on its way to becoming free of feral deer.
- » Possum eradication is achieved at six or more significant peninsulas across Northland.
- » Mana whenua-led forest protection programmes are working to protect forests across the region, with landscape-scale control of stoats and rats.
- » Northland's high-value lakes have been identified and assessed, and are being actively managed.
- » A Regional Biodiversity Strategy is implemented, to deliver outcomes in line with Te Mana o te Taiao – Aotearoa NZ Biodiversity Strategy.
- » Support for landowners continues, to protect priority sites with restoration plans that include pest control and stock exclusion.
- » Marine biosecurity is fully integrated with the aspirations of iwi and hapū for moana restoration.

## Achieve by 2051

- » Northland continues to be pest-free, thanks to the region's Predator Free 2050 programmes and other community initiatives.
- » All Northland's forests, wetlands and lakes are protected and monitored in line with the Regional Biodiversity Strategy and Te Mana o te Taiao – Aotearoa NZ Biodiversity Strategy.
- » Mana whenua continue to lead and partner in protection programmes for land and marine life.

# NGĀ HAPORI MANAWA ROA, NGĀ HAPORI URUTAU I TE HURINGA O TE TAIAO RESILIENT, ADAPTABLE COMMUNITIES IN A CHANGING CLIMATE

We want communities to be well prepared for the growing effects of climate change and the hazards our region faces, such as droughts and floods.



## What we want to achieve by 2024

- » The Awanui Flood Scheme upgrade and Otiria-Moerewa flood mitigation spillway are complete.
- » Our completed region-wide flood modelling and coastal hazard mapping continues to improve with additional modelling and erosion assessment, and this information is communicated more widely.
- » All Northland councils have adopted the Te Taitokerau Climate Adaptation Strategy, and we're making progress towards achieving short-term priority actions.
- » A \$6 million upgrade of the tsunami siren network – contributed to by all four Northland councils (our contribution is \$2 million over two years) – is complete.
- » Significant progress is made towards achieving the short-term recommended actions in our climate change strategy, Ngā Taumata o te Moana, to help Northland's communities adapt to a changing environment, reduce emissions and remove carbon from the atmosphere.
- » A \$5.5 million, purpose-built, multi-agency joint emergency coordination centre, is nearing completion, and will be the central point for emergency responses.

Northland must be ready to adapt, time and time again, to a changing climate. Flooding is the most common natural hazard we face as a region, and the effects of climate change are likely to increase this risk.

We will continue to coordinate and contribute to adaptation responses, which support our communities and natural environment to be resilient in the face of climate change. We're also charged with leading emergency management for Northland, and promoting and managing navigation safety on our coastal waters and lakes.

## Achieve by 2031

- » Work continues together with Northland communities to identify and reduce flood risk.
- » Hazard maps are updated with new data and information as it becomes available, including predictions of climate change or sea level rise.
- » Most of the priority actions in the Te Taitokerau Climate Adaptation Strategy are completed.
- » Significant progress is made towards achieving all recommended actions in our climate change strategy, Ngā Taumata o te Moana.
- » Risk-reduction strategies are developed for all major natural hazards.

## Achieve by 2051

- » Adaptive management plans are in place for all areas materially affected by climate change.
- » All recommended actions in our climate change strategy, Ngā Taumata o te Moana, have been achieved/implemented so that:
  - communities can weather the impacts of climate change
  - Northland has net-zero emissions
  - there is widespread use of natural processes to capture and store carbon.
- » Northland is a leader in sustainable land use and water management practices.
- » All communities across Northland have a high level of resilience.



# NGĀ HONONGA WHAI TIKANGA KI TE TANGATA WHENUA

## MEANINGFUL PARTNERSHIPS WITH TANGATA WHENUA

We're seeking strong outcomes for Māori through enduring relationships between iwi/hapū and council.

Approximately one-third of Northlanders identify as Māori, compared with one-sixth of the national population. The mātauranga and culture of te ao Māori enriches our region, and we know that creating and sustaining meaningful relationships with Māori is key to a thriving Northland.

We want to grow partnerships between council and Māori as tangata whenua/mana i te whenua, to ensure we're working together to deliver environmental, economic, social and cultural wellbeing for Te Taitokerau. This means supporting Māori communities to become resilient and prosperous, fulfilling our obligations under the Treaty of Waitangi.



### What we want to achieve by 2024

- » There is an enduring partnership between tangata whenua and council that strengthens Māori communities.
- » There is tangata whenua support for the mahi council is doing and plans to do, to improve the relationship between Māori and council.
- » Council continues to be actively involved in treaty settlement processes with Māori and the Crown.
- » Mana Whakahono ā Rohe agreements are successful and proven to be mutually beneficial to council and Māori.
- » Iwi/hapū and council work together on addressing major issues affecting the region.
- » A Treaty of Waitangi 'health check' is complete and recommendations from this are being implemented.
- » Iwi and hapū are informing decision-making at a governance level, and providing leadership to build resilient and prosperous Māori communities.
- » Māori-constituency councillors are sitting at the council table.

### Achieve by 2031

- » Tangata whenua and council have a positive relationship that delivers tangible benefits, which helps create resilient and prosperous Māori communities.
- » Te Taitokerau is recognised as a region where government, the private sector and Māori organisations work in partnership on innovative economic and environmental mahi.
- » Council is recognised by Māori as a leading organisation for the way it meets the aspirations of Māori.

### Achieve by 2051

- » An enduring partnership between council and Māori is in place to ensure we work together to deliver strong outcomes for Te Taitokerau.



# HE ŌHANGA Ā-ROHE E PĀKAHA NEI, E TOITŪ NEI

## A STRONG AND SUSTAINABLE REGIONAL ECONOMY

A sustainable economy, supporting a healthy standard of living and wellbeing in Te Taitokerau – that's what we're striving for.

When the economy is doing well, it also gives us more resources to care for Te Taitokerau's environment.

As a council, we have the capacity to borrow and invest for the benefit of Northland. We'll continue to do this, working for a prosperous and thriving region that current and future

generations can enjoy. As stated in the mission of the economic development agency we jointly own, Northland Inc, activities that help achieve equity and environmental sustainability are a vital part of that mahi.



### What we want to achieve by 2024

- » Northland Inc is a national leader in regional economic development support services, with approaches that balance ecological and social inter-dependencies, and support the aspirations of Māori.
- » The Investment and Growth Reserve is supporting long-term economic growth across the region.
- » The whole region benefits from economic development funding opportunities that come through central government.
- » The options to support the transition to a net zero-carbon economy in Northland are clearly understood.
- » Big infrastructure projects that support economic development are agreed and underway (e.g. water storage and digital infrastructure).
- » Northland has a regional economic development strategy in place, co-designed with Māori and supported by Northland's economic community.
- » Central government, councils, tangata whenua, businesses and key agencies work in partnership to deliver economic development across the region.

### Achieve by 2031

- » Northland's infrastructure needs, such as water storage and digital capacity, are being well met.
- » Our thriving regional economy is well supported by local government.
- » Northland is known nationally for having a diverse, resilient economy that supports strong communities and environmental sustainability.
- » Considerable steps have been made to transition to a net zero-carbon economy in Northland.
- » The actions and outcomes set in the regional economic development strategy have been achieved, and a revised regional economic development strategy is in place.

### Achieve by 2051

- » Northland continues to be known nationally for having a diverse, resilient economy that supports strong communities and environmental sustainability.
- » Northland is benefiting from well-established partnerships between councils, tangata whenua, businesses, central government and key agencies.
- » Northland has a climate-smart economy – climate resilient, with carbon emissions at net-zero level, and a thriving carbon removal economy.

# NGĀ HUARAHI WHAI HUA E HONO NEI I TŌ TĀTOU TAKIWĀ

## SAFE AND EFFECTIVE TRANSPORT NETWORKS CONNECTING OUR REGION

We want transport networks that are safe, well organised and increasingly low emission, connecting communities and supporting our regional economy.



### What we want to achieve by 2024

- » There is national support for the shared regional vision and objectives for Northland transport in the Regional Land Transport Plan.
- » Work on the major infrastructure projects in our Regional Land Transport Plan is underway.
- » A resilient transport network continues to be provided, with additional bus services where required to enable social and economic development.
- » Roads are safer, working towards the national Road to Zero targets.
- » Construction is continuing on walking and cycling projects identified in the Northland Walking and Cycling Strategy.
- » An agreed plan is in place to transition to a zero-carbon Northland public transport fleet.
- » Options for decarbonising Northland Regional Council's vehicle fleet and improving the efficiency of vessels are clearly understood.

To do this, we will work with the many different organisations that are responsible for Northland's transport network. Northland's growth and economic development will be well

supported via road, rail, and coastal shipping, and we'll provide fit-for-purpose public transport, while encouraging Northlanders to choose low-carbon transport.



### Achieve by 2031

- » Northlanders have a range of sustainable and environmentally friendly transport options.
- » The major infrastructure projects in our Regional Land Transport Plan are complete.
- » Roads are safer and national Road to Zero targets are achieved.
- » The roading network is more resilient, with fewer roads vulnerable to flooding and accident closures.
- » Advocacy for the upgrade of the Whangārei-to-Ruakākā road to four lanes and SH1 upgrade from Auckland to Wellsford continues.
- » Upgrades to the North Auckland rail line are complete, including the new Marsden Point rail line and the reopened Kauri to Otiria rail line.
- » Northland Regional Council has a zero-carbon car fleet and is working towards a zero-carbon vessel fleet.
- » Options for developing comprehensive regional EV-charging infrastructure are clearly understood.
- » Most of Northland's public bus fleet is zero-carbon.
- » There is a clear plan for Northland to move to zero-carbon transport by 2050, and progress is being made as planned.
- » Transport needs are effectively integrated into land use planning.

### Achieve by 2051

- » Northlanders can consistently travel safely and efficiently around the region, and to Auckland via a four-lane highway.
- » Northland has a comprehensive EV charging infrastructure network.
- » All transport in Northland is zero-carbon.
- » Land use planning aligns with regional transport needs, and supports economic and social development.

**Want to know more?**

Visit [nrc.govt.nz](http://nrc.govt.nz)