

# Climate Resilient **Communities** Fund

## Kia manawaroa te taitokerau



Building resilient communities in a changing climate

Fund guidelines 2025

# Our commitment to a resilient and thriving Te Taitokerau



The changing climate will make it harder to maintain a reliable food, water, and energy supply and will cause added pressure on our local ecosystems. We can prepare by better understanding what our future could bring and by implementing solutions to transform our society and economy.

Local solutions build community resilience because they are tailored to the challenges, resources, and needs of each community. These solutions foster collaboration, empower people, and often incorporate local knowledge and traditions, such as mātauranga Māori. By focusing on what works best at the local level, we can create sustainable, adaptable, and inclusive strategies and action for tackling climate change to help Te Taitokerau thrive.

**MORE FREQUENT AND INTENSE STORMS, FLOODS,  
DROUGHTS AND WILDFIRES ARE DISRUPTING OUR LIVES,  
IMPACTING OUR WELLBEING, AND DAMAGING OUR HOMES  
AND COMMUNITY INFRASTRUCTURE.**



Building resilient communities is a priority for Northland Regional Council. It is central to Ngā Taumata o te Moana, our strategy for tackling climate change, which aims to make Te Taitokerau more resilient and help our region transition proactively and equitably to a thriving net-zero emissions society before 2050.

Over the next 10 years, Northland Regional Council will invest \$9.2 million through the Climate Resilient Communities Fund into projects that build community capacity and drive transformational change.

# About the fund

The Climate Resilient Communities Fund supports communities to undertake immediate and meaningful action to build resilience. Communities can't tackle everything alone, but we can support projects that inspire change and foster self-reliance.

Taking proactive steps today can reduce the impact of challenges and minimise costs for future generations.

**Funding is available for projects that:**

- » build capacity and scale-up regional initiatives for faster and more sustainable results
- » raise awareness and encourage a deeper understanding of the challenges our communities face
- » strengthen local connections and build enduring partnerships
- » create plans for transformational change that support community and tangata whenua climate resilience
- » encourage participation in action projects that make a difference now to build collective community resilience
- » are a good fit with one of the fund's five impact areas.

This funding is for initiatives that improve water, kai and energy security, use nature-based solutions to help our environment thrive and that raise awareness, create strong social connections and develop plans to guide us toward a thriving and resilient future.

**THE SEEDS OF ACTION WE PLANT  
TODAY WILL GROW INTO A  
RESILIENT, THRIVING COMMUNITY.**







## Water Resilience | Te Wai

Water Resilience (Te Wai) focuses on proactively addressing the challenges posed by increasing water scarcity in a changing climate, by taking practical steps to enhance water resilience.



## Food Resilience | Te Kai

Food Resilience (Te Kai) focuses on creating a low-carbon, sustainable and resilient regional food system in Northland, while fostering community and tangata whenua wellbeing and connection.



## Energy Resilience

### Te Ngao

Energy Resilience (Te Ngao) aims to enhance energy security while reducing greenhouse gas emissions.



## Nature-Based Resilience | Te Taiao

Nature-Based Resilience (Te Taiao) looks to nature for solutions to build climate resilience, enhancing ecosystem resilience, regenerating food and farming systems, and sequestering carbon through forest, kelp or wetland restoration.



## Planning for Resilience Ngā Mahi Whakamahere

Planning for Resilience (Ngā Mahi Whakamahere) aims to strengthen local connections, enhance community knowledge and understanding of climate impacts and empower communities to engage in adaptation planning.

# Fund criteria

We're looking for innovative and forward-thinking initiatives. These initiatives must be driven by how a changing climate could affect our region. They must make plans or take action to improve our long-term resilience to climate change. Projects must adhere to the following principles.

**Emergency response is not a focus of this fund.**



## Public good

Initiatives deliver significant social, cultural, environmental and/or economic resilience outcomes and benefit to the broader community and are not for individual or private gain.



## Equity

Initiatives prioritise communities vulnerable to climate impacts and support an equitable transition to community climate resilience.



## Build capacity

Initiatives empower communities to take charge of their climate resilience journey and enhance self-reliance.





## Connection

Initiatives engage multiple partners and strengthen community connections and relationships.

## Continuation

Initiatives show that outcomes of the project will continue beyond the initial scope of the grant.



## Circular economy

Initiatives encourage circular and sustainable practices, reducing waste and promoting resource efficiency.

## Do no harm

Initiatives should avoid negative consequences and consider future impacts.



# What we can fund

## In scope

- » Project or programme costs including project-related resources, equipment and materials.
- » Salaries and wages to implement the project.
- » Resourcing expertise or technical support to provide specific climate-related advice.
- » Events/engagement/hui/kōrero that advance the outcomes of the project.
- » Research or trials involving a community cluster that could have wider benefit or knowledge transfer to other communities.

## Out of scope

- » Equipment and infrastructure that are largely driven by response to an emergency.
- » Equipment and infrastructure that do not support our goal of a net-zero emission society, eg. fossil fuel powered machinery, generators.
- » Activities driven by private gain or without a significant community benefit.
- » Debt servicing or repayment.
- » Activities promoting religious or political causes.
- » Public services that are the responsibility of central government (such as core education or primary health care).
- » Physical works where consents or permits are required but have not yet been obtained.
- » Retrospective funding.

# Who can apply

Applicants to the Climate Resilient Communities Fund can be:

- » community or neighbourhood groups
- » tāngata whenua (hapū or iwi groups/marae committees, or other legal Māori entities created for the collective betterment of Māori)
- » social enterprises and not-for-profit businesses, or
- » education providers including schools, early childhood centres, kōhanga reo, kura and tertiary institutions/ kaupapa Māori wānanga.

**Applications must be for projects in Te Taitokerau/Northland.**

Applicants must either be a legal entity registered in New Zealand – such as an incorporated society, charitable trust, or not-for-profit limited-liability company – or an organisation or group without legal entity status that is partnering with an organisation that has legal entity status.

If your organisation is not a legal entity, you may partner with an appropriate organisation that has legal status (umbrella organisation). You will need to work closely with the umbrella organisation, and their details must be provided in the application. The umbrella organisation will be the organisation contracted with, and it will be responsible for managing the funding and ensuring the delivery of the project.

Applications led by government organisations will not be considered. However, Te Taitokerau-based organisations and projects, groups or organisations partnering with government organisations can be considered and are encouraged.

GST registration is not a requirement. However, applicants must provide GST status on the application form and complete the field relevant to them.

# How to **apply**

You can submit applications online at [nrc.govt.nz/climate-resilience-funding](https://nrc.govt.nz/climate-resilience-funding) until **5pm on Tuesday 3 June 2025**.

You will need to create a login and password. Make sure you keep a record of these details so you can get back into the site.

There is a summary of the information you will need to complete your application at the end of this document.

## **Funding** details

- » Groups can apply for up to a maximum of \$40,000 plus GST per application.
- » The minimum amount for project funding is \$5,000 plus GST.
- » The total value of funding available this financial year is \$600,000.

Successful applications will make some form of contribution to the project, which may include other funding through a co-funding arrangement, or an in-kind contribution of goods or services.

**MĀ TE HURUHURU, KA RERE TE MANU  
ONLY WITH FEATHERS WILL THE BIRD FLY**

**Public Transparency** - Applicants must agree to grant fund allocation details being made publicly available on the Northland Regional Council website. Transparency builds trust and encourages accountability.



# How funding decisions are made

The Climate Resilient Communities Fund is a contestable fund with publicly advertised opening and closing dates. Applications are evaluated transparently and fairly for specific projects or initiatives.

Funding applications will be considered and decided upon by a panel of Northland Regional Council staff and the Pou Tiaki Hapori/ General Manager - Community Resilience. Applications will be assessed against the following criteria:

- » Alignment with the grant purpose of delivering strategic and action-focused community resilience building outcomes.
- » Prioritisation of an equitable transition to achieving community climate resilience.
- » Capacity building through collaboration and connection, and scaling-up outcomes.
- » Project readiness, expected outcomes, sound practices and risk.

If an application is successful, a funding agreement will be drafted. This will outline the terms and conditions of the funding, a payment schedule, and details of reporting requirements.



Northland Regional Council will respect and value mātauranga Māori (Māori knowledge) and tikanga-based approaches when fund applications are assessed, and throughout the fund process.

# Reporting

You can report on the outcomes and achievements of your mahi (work) with written reports, videos, case studies, presentations, maps, graphs, or a mixture of different formats. We'll work with you to find a reporting method that captures your story and project outcomes effectively.



Whatever reporting method you choose, we'll be looking for:

- » a description of the project, who was involved, and how it was achieved
- » information and data that measure outcomes
- » the positive impacts of the project and what this means for the community
- » the lessons learnt, including any difficulties you faced so that future improvements can be made
- » information on the level of engagement and how you encouraged the community to take part
- » plans for ongoing work, and how the project will sustain its impact for long-term resilience, and
- » your message to others on how they can participate.

Where appropriate, we'd like to share your stories and learnings to inspire others to get involved and play their part in building community climate resilience.

**COMMUNITY STORIES AND  
TESTIMONIALS ADD AUTHENTICITY!**

Greenhouse gas  
emissions reduced



Knowledge gained from  
a new investigation



Amount of carbon  
removed from the  
atmosphere



Number of people  
contributing to the  
conversation and  
networks strengthened





# Measuring progress

Understanding the outcomes of funding investment is important to see how we're tracking towards a thriving community that is resilient to a changing climate. Over time we'll update our community on the progress this investment is making.

Our funding team will discuss with you how you'll measure the success of your project and how we can use this information to track Northland's progress towards a resilient, thriving community. Measures might include:

Number of resilience plans developed

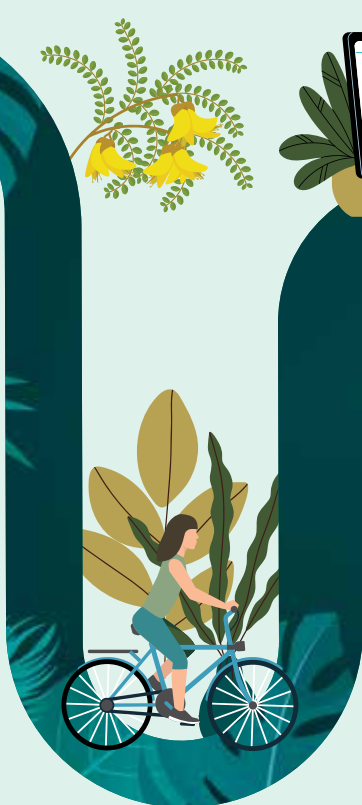


Number of people with reduced exposure to climate impact



Number of people with access to locally grown kai, reliable water supply and renewable energy

Number of commitments to a changed behaviour



# Information required to apply

## Applicant details

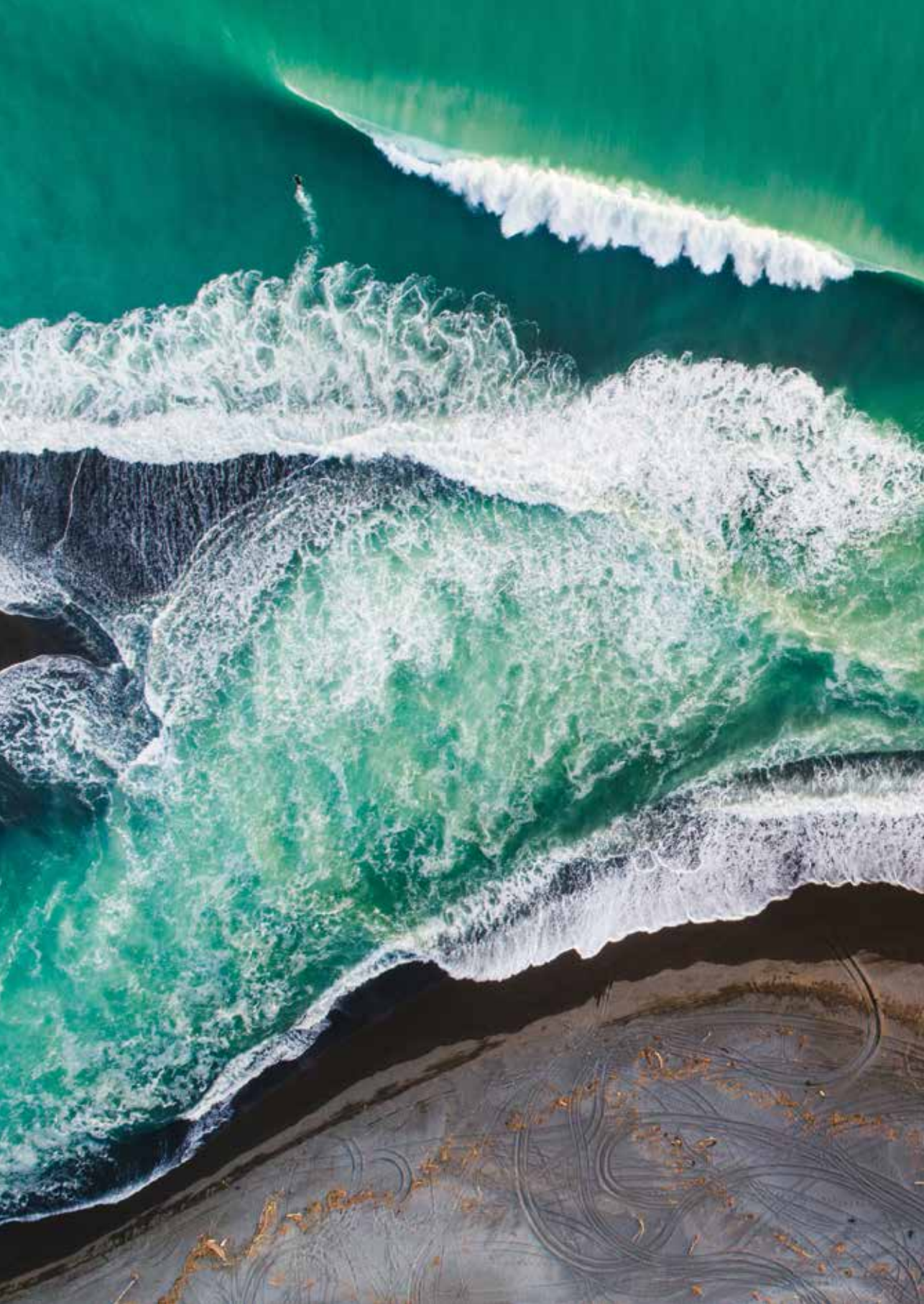
- » Name and address of organisation applying
- » Legal status of organisation and umbrella organisation details if applicable
- » Key and alternative contact person details
- » Bank account details and GST status
- » Conflict of interest declarations

## Project information

- » Project name and description
- » Project address and district
- » Amount of funding sought
- » Fund impact area project aligns to
- » Further project detail relating to fund criteria
- » Detail on measuring resilience outcomes

## Project plan and budget

- » Key milestones and expected delivery dates
- » Potential risks to project and plans to manage them
- » Project budget including costed deliverables
- » In kind contributions to project
- » Budget option for reduced scope if full funding request not available



0800 002 004  
climateaction@nrc.govt.nz  
[nrc.govt.nz/climateresiliencefunding](https://nrc.govt.nz/climateresiliencefunding)