



Waioira Northland Water

Natalie Glover
Policy Specialist - Water

Catchment Group Introductions

- Membership
 - Who we are, where we live
 - Who we represent
 - Our interest in freshwater management

Ground rules

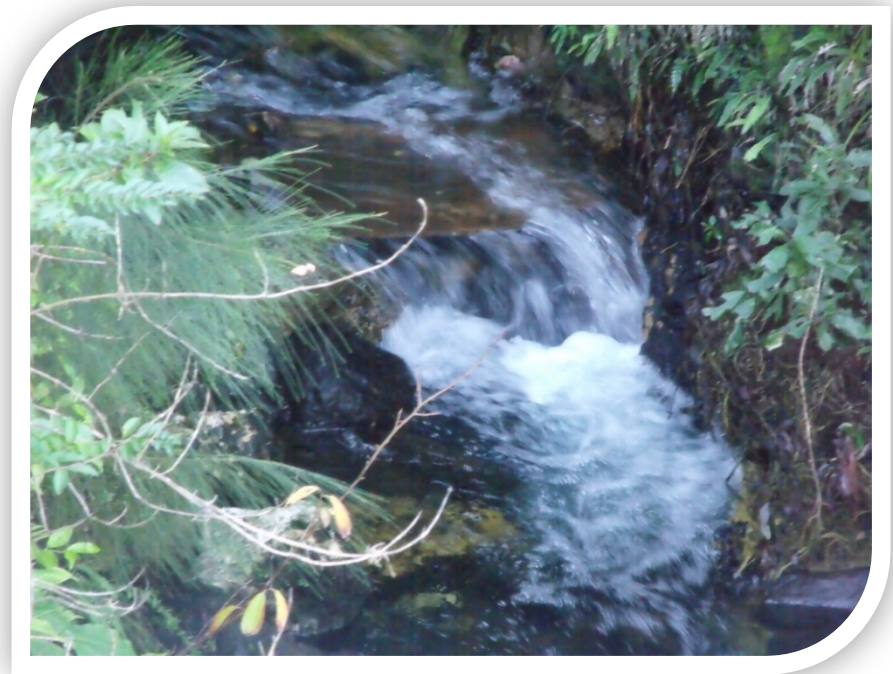
- How we work together
- Terms of reference
- Chatham House Rules

Summary

- Programme drivers
- Existing Council NPS implementation work
- Priority Catchments
- Waiora Northland Water tasks
- Catchment groups and outcomes

Community drivers

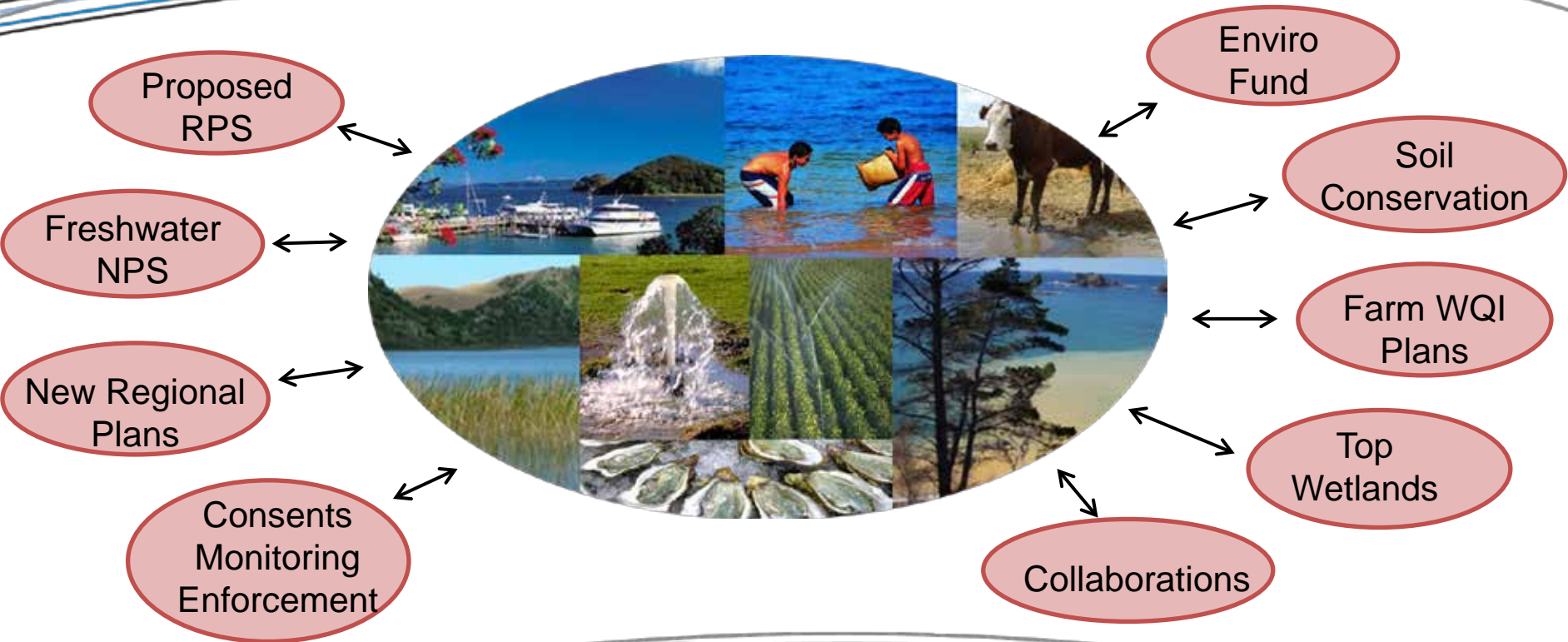
- Communities want good water quality and availability



Policy Drivers

- NPS Freshwater Management
- Regional Policy Statement
- Water and Soil Plan

Northland water quality and water management improvement



Catchment Groups

Catchment Group	Inaugural meeting
Pouto	26 June 2014
Waitangi	19 June 2014
Whangarei	17 October 2013
Mangere	6 August 2013
Doubtless Bay	31 July 2013

- First priority catchments and outstanding water bodies
- Water quality and quantity objectives and limits for catchments
- Interim default objectives and limits set for remaining catchments.



What is Waiora Northland Water?

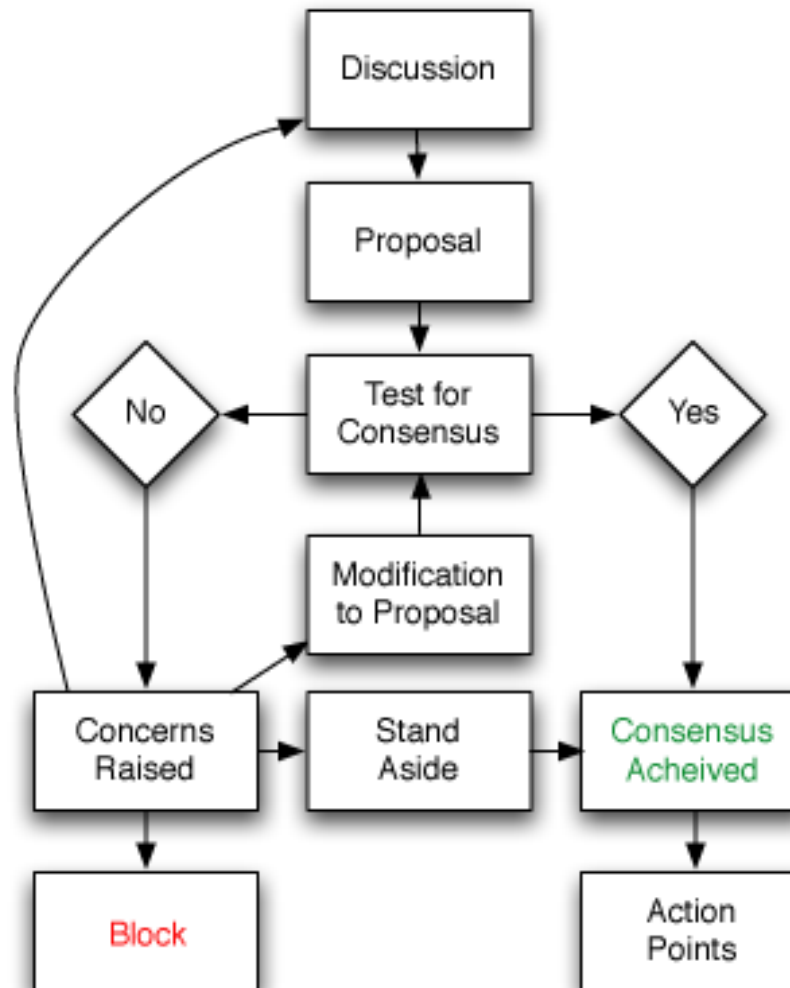


- Maintain or improve Northland water quality
- Set freshwater objectives & values
- Manage water allocation
- Determine water quality limits

Collaborative Catchment Groups

- Representatives nominated; EMC approves
- Interim chair – until group elects chair
- Admin and technical support provided
- Meet bimonthly or more
- Work together collaboratively, engage with communities of interest
- Consider technical and each other's input
- Consensus recommendations to EMC/
Council committee

Consensus Process



Catchment group work plan

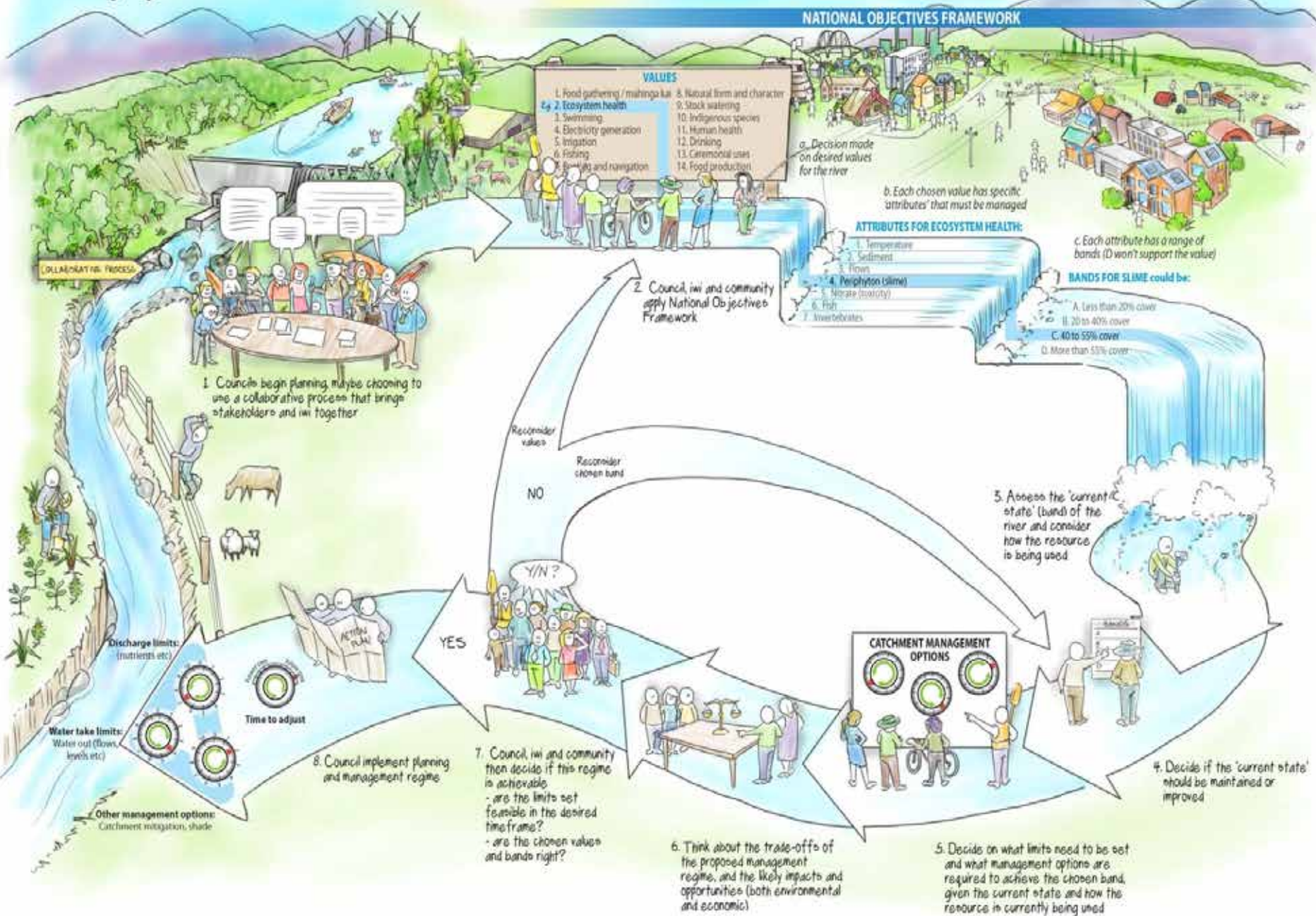
- Uses and values
- Objectives (desired environmental state)
- Policy and management options
- Freshwater limits (quality, quantity)
- Catchment management plan

Catchment Management Plan

- Develop recommendations such as
 - Work programmes and priorities
 - Good management practice opportunities
- Staff check for consistency with policy
- Recommendation to EMC

Managing fresh water in New Zealand

NATIONAL OBJECTIVES FRAMEWORK



Thank you

Natalie Glover

Policy Specialist -Water



09 470 0246



natalieg@nrc.govt.nz



www.nrc.govt.nz



**Follow us on
Twitter**

[Twitter.com/NRCexpress](https://twitter.com/NRCexpress)

Stay connected



0800 002 004



www.nrc.govt.nz



24/7 Environmental Hotline
0800 504 639

