

# Ruawai

## NORTHLAND

# Community Response Plan



# contents...



Purpose of the plan .....3

Plan activation process .....3

Community led centres .....3

Roles and responsibilities .....3

Key hazards .....4

    Tsunami ..... 4

    What zone are you in?..... 5

    Ruawai tsunami evacuation map..... 6

    Flooding..... 7

    Major Storms ..... 7

    Rural Fire..... 7

Household emergency plan.....8

Emergency survival kit .....9

    Getaway kit..... 9

    Stay in touch..... 9

Tsunami information .....10-11

    Before, during & after ..... 12

## Floods

    Before and during..... 13

    After a flood ..... 14

## Major storms

    Before and during..... 15

    After a storm, tornadoes and landslides..... 16

## Rural Fire

    Before and during..... 17

    After a fire..... 18

Emergency contacts ..... 19

For further information.....20



## Purpose of the plan

The purpose of this Ruawai Community Response Plan is to provide Ruawai community members and visitors with information on the key hazards in Ruawai, and what to do in an emergency. This plan has been created by the Ruawai Community Response Group in collaboration with Northland Civil Defence.

## Plan activation process

These instructions are for members of the Ruawai Community Response Group (RCRG) and emergency services for initiating their pre-planned roles. The plan below will be activated at the request of Civil Defence or emergency services.

### RCRG - DO THIS

- Contact members of the response group and decide on an appropriate place to meet.
- Liaise to determine what actions should be taken.
- Consider who is affected and where.
- Activate community warning systems as required.
- Consider the location of a control point / centre.
- Consider the establishment of Community Led Centres.
- Phone the Kaipara Civil Defence Emergency Management Specialist or Civil Defence Duty Officer to notify them of what actions have been taken.

*It is important to note that although the Ruawai Community Response Group have planned for such an event, they are a volunteer group, not an emergency services group. The decision to involve this group will be made by Civil Defence and/or emergency services.*

## Roles and responsibilities

The role and responsibilities of the emergency services is clearly defined by legislation. In the event of this plan being activated due to an emergency event occurring, the roles and responsibilities of community groups are set out as below.

### POLICE

- Maintain law and order
- Protect life and property
- Assisting the coroner
- Coordinating movement control
- Search and rescue

### FIRE AND EMERGENCY

- Fire-fighting responsibilities
- Containment of releases and spillages of hazardous substances
- Urban search and rescue
- Limitation of damage
- Redistribution of water for specific needs

### ST JOHN AMBULANCE

- Provision of emergency medical care

### COASTGUARD

- Coordination of Marine Rescue
- Provision of alternative communication if required via VHF and SSB

### CIVIL DEFENCE COMMUNITY RESPONSE GROUP

- Liaise with Civil Defence and emergency services to initiate and assist in a response to a civil emergency, disseminate warnings and identify and make arrangements for welfare centres if required

## Community Led Centres

The location of the Community Led Centre will depend on the type of emergency and the area impacted.



**Parirau Mārae** (south Ruawai)

- 87 Tana Road, Matakoho, 0594



**Tokatoka Community Hall** (north Ruawai)

- 410 Tokatoka Road, Ruawai, 0592



**Ruawai Tokatoka War Memorial Hall** (central Ruawai)

- 25 Ruawai Wharf Road, Ruawai, 0530
- NOT for use during a tsunami or flood event

# get ready...



## The key hazards in Ruawai

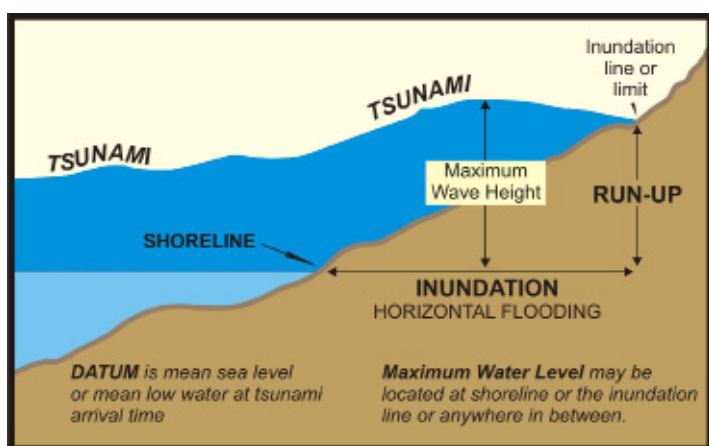
- Tsunami
- Flooding
- Major storm
- Rural Fire



### Tsunami

New Zealand's entire coast is at risk of tsunami. A tsunami can violently flood coastlines, causing devastating property damage, injuries and loss of life.

A tsunami is a natural phenomenon consisting of a series of waves generated when a large volume of water in the sea, or in a lake, is rapidly displaced. A tsunami can be caused by large submarine or coastal earthquakes; underwater landslides which may be triggered by an earthquake or volcanic activity; large coastal cliff or lakeside landslides; or volcanic eruptions beneath or near the sea.



## Be Safe!

Know your tsunami evacuation zones  
See the maps on page 6

## The three types of tsunami

There are three distinct types of tsunami. The type you encounter depends on the distance you are from the place where it is generated.

**Distant tsunami** are generated from a long way away, such as from across the Pacific in Chile. In this case, we will have more than three hours warning time for New Zealand.

**Regional tsunami** are generated between one and three hours travel time away from their destination. An eruption from an underwater volcano in the Kermadec Trench to the north of New Zealand could generate a regional tsunami.

**Local tsunami** are generated very close to New Zealand. This type of tsunami is very dangerous because we may only have a few minutes warning.

## Know the natural warning signs

If you are at the coast and experience any of the following, move immediately to the nearest high ground, or as far inland as you can:

- Feel a strong earthquake that makes it hard to stand up, or a weak rolling earthquake that lasts a minute or more;
- See a sudden rise or fall in sea level; or
- Hear loud and unusual noises from the sea.



## What zone are you in?

Northland residents and visitors have access to maps showing Tsunami Evacuation Zones for many of the region's coastal communities.

Northland Civil Defence have maps that graphically highlight three zones that need to be evacuated in the event of a tsunami warning, depending on different levels of risk.

The maps allow people to identify where their property or house sits in regard to the evacuation zone, an escape route and where they should go.

It's important for people to plan a route that can be a quick exit and preferably one that's on foot so roads aren't congested.

In some cases this might not be practical due to distances required to travel, so it is important to identify optional routes and aim to keep going as far as possible so others who may be behind aren't blocked in.

The evacuation zones are based on different levels of inundation - i.e. how far the water is likely to reach onshore in different scales of tsunami - with a red zone nearest the beach, moving through orange and yellow evacuation zones further inland.

### Tsunami wave zone

### Wave height

RED ZONE	Higher Probability	20cm - 1 metre
ORANGE ZONE	Moderate Probability	1 metre - 5 metres
YELLOW ZONE	Lower Probability	5 metres - 8 metres

### The red zone

is simply the topographic map coastline and is to be usually evacuated in response to the 0.2-1m wave height threat level called 'threat to beach, harbours, estuaries and small boats'.

### The orange zone

matches the 1-5m wave height threat level called a 'moderate land threat', arriving on or below high tide. In other words if a moderate land threat level (or a lesser threat level) is called, only the red and orange zones need to be evacuated - even if the wave could arrive on high tide. The orange zone includes the red zone.

### The yellow zone

includes the maximum credible tsunami sources taking into account the worst cases from both modelling and geological deposits. In an official warning larger than the moderate land threat level, or in the case of a natural or informal warning where the potential wave height is unknown, all zones including the yellow zone should be (self)-evacuated. The yellow zone includes the red and orange zones.

For all maps visit  
[www.nrc.govt.nz/evacuationzones](http://www.nrc.govt.nz/evacuationzones)



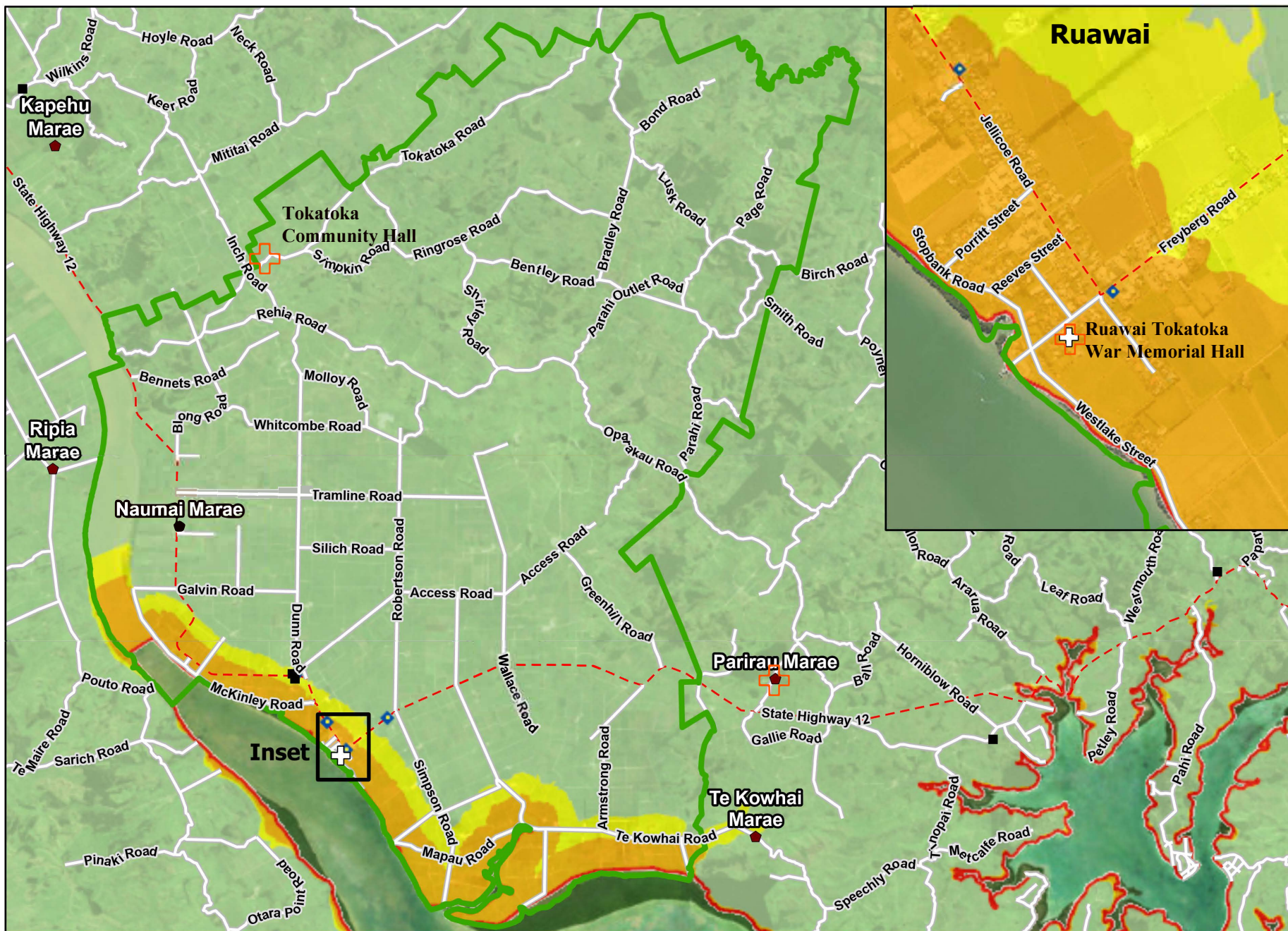
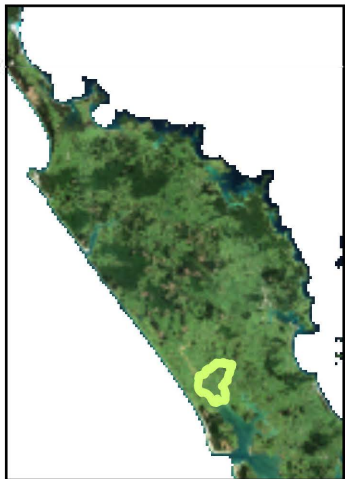
A tsunami may arrive soon after a major earthquake. Don't wait for an official warning.

Walk inland or to high ground.  
Use the map to identify your nearest safe zones and safe locations ahead of time.

Evacuate on foot if possible.  
Roads will block very quickly.  
Take essential items - tsunami flooding can last for many hours



More maps and info at:  
[www.nrc.govt.nz/tsunami](http://www.nrc.govt.nz/tsunami)



Crown Copyright Reserved  
Datum NZTM2000, Projection NZTM  
DISCLAIMER:  
The Northland Regional Council cannot guarantee that the information shown is accurate and should not be reused in any manner without proper consultation with its owner.





# get ready...



## Flooding

Floods can cause injury and loss of life, damage to property and infrastructure, loss of stock, and contamination of water and land.

Floods are usually caused by continuous heavy rain or thunderstorms but can also result from tsunami and coastal storm inundation.

A flood becomes dangerous if:

- the water is deep or travelling fast
- the floods have risen quickly
- the floodwater contains debris, such as trees and sheets of corrugated iron.

Getting ready before a flood strikes will help reduce damage to your home and business and help you survive.



## Major storms

Major storms affect wide areas and can be accompanied by strong winds, heavy rain, thunder, lightning, tornadoes and rough seas. They can cause damage to property and infrastructure, affect crops and livestock, disrupt essential services, and cause coastal inundation.

Severe weather watches and warnings are issued by the MetService and available through the broadcast media, by email alerts, and online at [www.metservice.co.nz](http://www.metservice.co.nz)



## Rural fire

Although there are many benefits to living in the country, rural property owners face a higher risk of fire than city dwellers.

If a fire starts it may not be detected as quickly and emergency services take longer to respond because of greater travel distances.

For information on fire danger, fire season status and requirements for fire permits visit [www.checkitsalright.nz](http://www.checkitsalright.nz)

### FIRE DANGER TODAY



# get ready...



## CREATE AND PRACTICE Household Emergency Plan

### YOUR HOUSEHOLD

Address

Name

Name

Name

Name

Name

Phone numbers

Phone numbers

Phone numbers

Phone numbers

Phone numbers

1. If we can't get home or contact each other we will meet or leave a message at:

Name

Contact details

Name (back-up)

Contact details

Name (out of town)

Contact details

2. The person responsible for collecting the children from school is:

Name

Contact details

3. Emergency Survival Items and Getaway Kit

Person responsible for checking water and food

Items will be checked and replenished on:

(check and replenish at least once a year)

The Getaway Kits are stored in the

4. The radio station (inc AM/FM frequency) we will tune in to for local civil defence information during an emergency

5. Friends/neighbours who may need our help or who can help us

Name

Address

Phone

Name

Address

Phone

6. On a separate sheet of paper draw a plan of the house showing places to shelter in an earthquake or storm, exits and safe assembly areas and where to turn off water, electricity and gas.

### IMPORTANT PHONE NUMBERS FOR POLICE, FIRE OR AMBULANCE CALL 111

Local Police station

Medical Centre

Insurance Company

Vet/Kennel/Cattery

Electricity Supplier

Council Emergency Helpline

Water Supplier

Gas Supplier

Electrician

Plumber

Builder



# get ready...



## CREATE Emergency Survival Kit

In most emergencies you should be able to stay in your home. Plan to be able to look after yourself and your household for at least three days or more. Assemble and maintain your emergency survival items for your home as well as a portable getaway kit in case you have to leave in a hurry. You should also have essential emergency items in your workplace and in your car.

### Emergency Survival Items

- ☐ Torch with spare batteries or a self-charging torch
- ☐ Radio with spare batteries
- ☐ Wind and waterproof clothing, sun hats and strong outdoor shoes
- ☐ First aid kit and essential medicines
- ☐ Blankets or sleeping bags
- ☐ Pet supplies
- ☐ Toilet paper and large rubbish bags for your emergency toilet

- ☐ Face and dust masks
- ☐ Phone, charging cords, powerbank



## Getaway Kit

Everyone should have a packed getaway kit in an easily accessible place at home and at work which includes:

- Torch and radio with spare batteries
- Any special needs such as hearing aids and spare batteries, glasses or mobility aids
- Emergency water and easy-to-carry food rations such as energy bars and dried foods
- First aid kit and essential medicines
- Essential items for infants or young children such as formula and food, nappies and a favourite toy
- Change of clothes (wind/waterproof clothing and strong outdoor shoes)
- Toiletries – towel, soap, toothbrush, sanitary items, toilet paper
- Blankets or sleeping bags
- Face and dust masks
- Pet supplies.

## HOW TO Stay in touch

### RADIO STATIONS

Newstalk ZB  
1026AM or 1215AM

The Hits  
95.6FM

More FM  
91.6FM Whangarei

Radio Live  
92.9FM

National Radio  
101.2FM

Concert Radio  
105.2FM

Big FM  
98.6FM

### Alerts to your phone

Two alerting platforms are used by Northland Civil Defence (and other official agencies) to send alerts about severe weather, tsunami or other emergencies.



The Red Cross Hazard App



Emergency Mobile Alerts

Both options are free to users although smartphones need to be of certain capability to be able to receive them.

We recommend that if possible, people take advantage of both.

To find out more, visit:  
[www.nrc.govt.nz/cdalert](http://www.nrc.govt.nz/cdalert)

### WEBSITES

Log on to one of the following websites for more information:

[www.nrc.govt.nz/civildefence](http://www.nrc.govt.nz/civildefence)

[www.facebook.com/civildefencenorthland](http://www.facebook.com/civildefencenorthland)

[www.geonet.org.nz/tsunami](http://www.geonet.org.nz/tsunami)

[www.geonet.org.nz/tsunami](http://www.geonet.org.nz/tsunami)

[www.ngdc.noaa.gov/hazard](http://www.ngdc.noaa.gov/hazard)

[www.metservice.com](http://www.metservice.com)

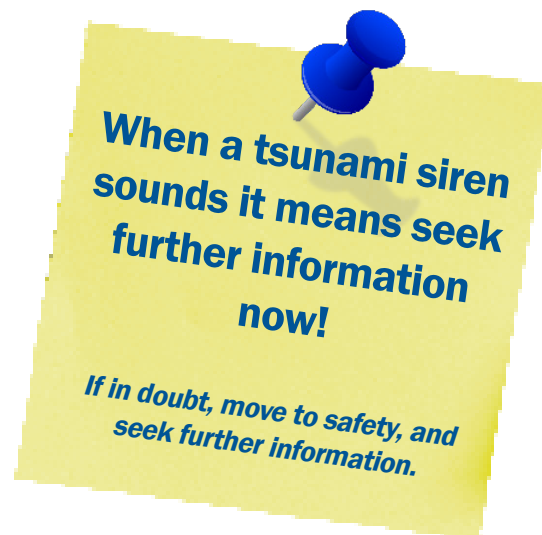


## TSUNAMI

### Tsunami sirens



Northland Civil Defence will issue a tsunami warning - and trigger sirens - after receiving an official tsunami warning from the National Emergency Management Agency (NEMA) National Warning System.



### What to do when you hear a siren

Tsunami sirens and their strobe lights are just one part of a range of formal and informal warning systems, any one of which can alert people to a tsunami.

The sirens and lights are a strong signal to seek further information.

When there is a tsunami warning the siren will sound intermittently. The strobe light will flicker throughout the event, from beginning to end.

### Tsunami siren do's and don'ts

Tsunami sirens **DON'T** necessarily mean you need to evacuate the area right away, or even at all.

They **DO** mean you need to find out what the level of threat is, and take action accordingly.

### Tsunami warnings

Warning messages and signals about a possible tsunami can come from several sources – natural, official or unofficial.

#### Natural warnings

For a local source tsunami which could arrive in minutes, there won't be time for an official warning. It is important to recognise the natural warning signs (see page 3) and act quickly.

#### Official warnings

Official warnings are only possible for distant and regional source tsunami. Official warnings are disseminated by NEMA to the national media, local authorities and other key response agencies. Your local council may also issue warnings through local media, sirens and other local arrangements.

#### Unofficial or informal warnings

You may receive warnings from friends, other members of the public, international media and from the internet. Verify the warning only if you can do so quickly. If official warnings are available, trust their message over informal warnings.



## Testing, testing 1 2 3



The tsunami siren network is tested twice a year at daylight savings weekend. Each daylight savings Sunday at 10.00am the siren network is tested by Civil Defence and Northpower and any maintenance issues are reported and corrected to keep the system in good working order.

## Telephone tree

A phone tree is a network of people organised in such a way that they can quickly and easily spread information amongst each other. The current telephone trees, will be used to inform the community in the event of a Civil Defence Emergency Response and are held by members of the Ruawai Community Response Group.

## For further information

Turn on a radio, television or computer and search for information on council websites and social media sites (Facebook and Twitter). You can also go straight to the Civil Defence Northland Facebook page:

[www.facebook.com/civildefencenorthland](https://www.facebook.com/civildefencenorthland) or  
[www.nrc.govt.nz/civildefence](https://www.nrc.govt.nz/civildefence)

If you don't have access to any of these, contact someone you think may have.

Follow instructions given by the media and spread the word to people you think may be at risk.

## Evacuation warnings



Civil Defence warnings to this area will be by the following methods:

Alerts to smart phones:

- Emergency Mobile Alerts (EMA)
- Red Cross Hazards app

Supporting information:

- Northland Civil Defence Website
- @civildefencenorthland Facebook page
- Tsunami sirens
- Radio
- Local procedures. e.g. phone trees

Note: Emergency Services may be responding to other emergencies. Have a plan of how to evacuate on your own, or with the help of your neighbours.



## BEFORE A TSUNAMI

Getting ready before a tsunami strikes will help reduce damage to your home and business, and help you survive.

- If you live in a coastal area, ask your council about your tsunami risk and local warning arrangements.
- If you have a disability or special requirements, arrange with your support network to alert you of any warnings and emergency broadcasts.
- Develop a household emergency plan and have a getaway kit ready.
- Know where the nearest high ground is and how you will reach it. Plan to get as high up or as far inland as you can. Plan your escape route for when you are at home, as well as for when you may be working or holidaying near the coast.
- Know your childrens school evacuation procedure and you and other caregivers fit into the plan.

## AFTER A TSUNAMI

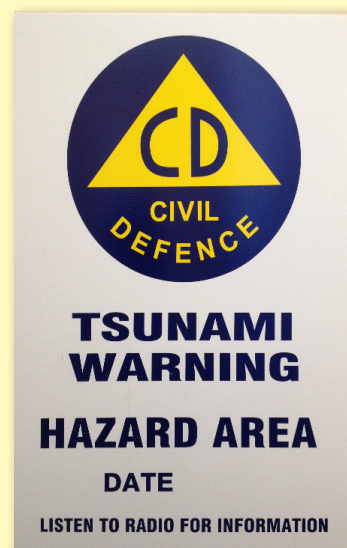
- Continue to listen to the radio for civil defence advice and do not return to the evacuation zones until authorities have given the all-clear.
- Be aware that there may be more than one wave and it may not be safe for up to 24 hours, or longer. The waves that follow the first one may also be bigger.
- Check yourself for injuries and get first aid if needed. Help others if you can.
- Do not go sightseeing.
- When re-entering homes or buildings, use extreme caution as floodwaters may have damaged buildings. Look for, and report, broken utility lines to appropriate authorities.
- If your property is damaged, take notes and photographs for insurance purposes. If you rent your property, contact your landlord and your contents insurance company as soon as possible.

## DURING A TSUNAMI



- Take your getaway kit with you if possible. Do not travel into the areas at risk to get your kit or belongings.
- Take your pets with you if you can do so safely. Consider a lead, food, and water.
- Move immediately to the nearest higher ground, or as far inland as you can. If evacuation maps are present, follow the routes shown. See the map on page 6.
- Bike if possible and drive only if essential. If driving, keep going once you are well outside the evacuation zone to allow room for others behind you.
- If you cannot escape the tsunami, go to an upper storey of a sturdy building or climb onto a roof or up a tree, or grab a floating object and hang on until help arrives.
- Boats are usually safer in water deeper than 20 metres than if they are on the shore. Move boats out to sea only if there is time and it is safe to do so.
- Never go to the shore to watch for a tsunami. Stay away from at-risk areas until the official all-clear is given.

Listen to your local radio stations as emergency management officials will be broadcasting the most appropriate advice for your community and situation.







## FLOODING



### BEFORE A FLOOD

- Find out from your local council if your home or business is at risk from flooding. Ask about evacuation plans and local public alerting systems; how you can reduce the risk of future flooding to your home or business; and what to do with your pets and livestock if you have to evacuate.
- Know where the closest high ground is and how to get there.
- Develop a Household Emergency Plan. Assemble and maintain your Emergency Survival Items for your home as well as a portable getaway kit. See page 8 for details.
- Check your insurance policy to ensure you have sufficient cover.

### DURING A FLOOD OR IF A FLOOD IS IMMINENT

- Listen to your local radio stations as emergency management officials will be broadcasting the most appropriate advice for your community and situation.
- If you have a disability or need support, make contact with your support network.
- Put your household emergency plan into action and check your getaway kit. Be prepared to evacuate quickly if it becomes necessary.
- Where possible, move pets inside or to a safe place, and move stock to higher ground.
- Consider using sandbags to keep water away from your home.
- Lift valuable household items and chemicals as high above the floor as possible.
- Fill bathtubs, sinks and storage containers with clean water in case water becomes contaminated.
- Turn off utilities if told to do so by authorities as it can help prevent damage to your home or community. Unplug small appliances to avoid damage from power surges.
- Do not attempt to drive or walk through floodwaters unless it is absolutely essential.



## AFTER A FLOOD

- It may not be safe to return home even when the floodwaters have receded. Continue to listen to your local radio station for civil defence instructions.
- Help others if you can, especially people who may require special assistance.
- Food including canned goods and water may need to be disposed of if contaminated by floodwater.
- Avoid drinking or preparing food with tap water until you are certain it is not contaminated. If in doubt, check with your local council or public health authority.
- Look for and report broken utility lines and roads to appropriate authorities.
- If your property is damaged, take notes and photographs for insurance purposes. If you rent your property, contact your landlord and your contents insurance company as soon as possible.





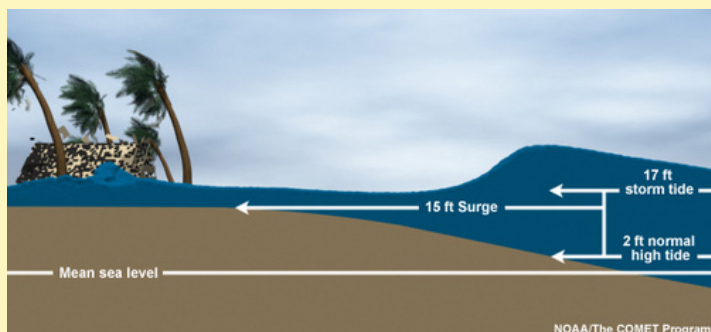
## MAJOR STORMS



### BEFORE A STORM

- Develop a household emergency plan. Assemble and maintain your emergency survival items for your home as well as a portable getaway kit. See page 8 for details.
- Prepare your property for high winds. Secure large heavy objects or remove any item which can become a deadly or damaging missile. Get your roof checked regularly to make sure it is secure. List items that may need to be secured or moved indoors when strong winds are forecast.
- Keep materials at hand for repairing windows, such as tarpaulins, boards and duct tape.
- If you are renovating or building, make sure all work complies with the New Zealand building code which has specific standards to minimise storm damage.
- If farming, know which paddocks are safe to move livestock away from floodwaters, landslides and power lines.

### WHEN A WARNING IS ISSUED AND DURING A STORM



*How a storm surge affects the land.*

- Stay informed on weather updates through regularly checking MetService online or downloading the Red Cross Hazards app.
- Listen to your local radio stations as civil defence authorities will be broadcasting the most appropriate advice for your community and situation.
- Put your household emergency plan into action and check your getaway kit in case you have to leave in a hurry.
- Secure, or move indoors, all items that could get blown about and cause harm in strong winds.
- Close windows, external and internal doors. Pull curtains and drapes over unprotected glass areas to prevent injury from shattered or flying glass.
- If the wind becomes destructive, stay away from doors and windows and shelter further inside the house.
- Water supplies can be affected so it is a good idea to store drinking water in containers and fill bathtubs and sinks with water.
- Don't walk around outside and avoid driving unless absolutely necessary.
- Power cuts are possible in severe weather. Unplug small appliances which may be affected by electrical power surges. If power is lost unplug major appliances to reduce the power surge and possible damage when power is restored.
- Bring pets inside, move stock to shelter. If you have to evacuate, take your pets with you if it is safe to do so.





## AFTER A STORM

- Listen to your local radio stations as emergency management officials will be broadcasting the most appropriate advice for your community and situation.
- Check for injuries and help others if you can, especially people who require special assistance.
- Look for and report broken utility lines to appropriate authorities.
- Contact your local council if your house or building has been severely damaged.
- If your property or contents are damaged take notes and photographs and contact your insurance company. Inform your landlord if there is damage to the rental property.
- Ask your council for advice on how to clean up debris safely.

## Tornadoes

Tornadoes sometimes occur during thunderstorms in some parts of New Zealand. A tornado is a narrow, violently rotating column of air extending downwards to the ground from the base of a thunderstorm. Warning signs include a long, continuous roar or rumble or a fast approaching cloud of debris which can sometimes be funnel shaped.

- Alert others if you can.
- Take shelter immediately. A basement offers the greatest safety. If underground shelter is not available, move to an interior room without windows on the lowest floor. Get under sturdy furniture and cover yourself with a mattress or blanket.
- If caught outside, get away from trees if you can. Lie down flat in a nearby gully, ditch or low spot and protect your head.
- If in a car, get out immediately and look for a safe place to shelter. Do not try to outrun a tornado or get under the vehicle for shelter.

## LANDSLIDES Warning signs

- Small slips, rock falls and subsidence at the bottom of slopes.
- Outside fixtures such as steps, decks, and verandahs moving or tilting away from the rest of the house.
- New cracks or bulges on the ground, road, footpath, retaining walls and other hard surfaces.
- Tilting trees, retaining walls or fences.
- Sticking doors and window frames.
- Gaps where frames are not fitting properly.





## RURAL FIRE



### BEFORE A FIRE

To protect your rural property from fire, we recommend:

- Installing smoke alarms and testing them regularly.
- Designing an escape plan and practicing it.
- Keeping the grass green and mown or grazed around your home.
- Creating a safety zone around your home of at least 10m by clearing any dead or dry material and replacing flammable plants and trees with low flammable species.
- Making sure your property is clearly signposted with your RAPID rural property identification number.
- Installing multipurpose dry powder extinguishers in your house and out buildings.
- Keeping a garden hose connected and make sure it is long enough to reach around the house.
- Ensuring your driveway has a minimum clearance of 4m wide and 4m high and adequate turning space for large vehicles.
- Easy access to water supplies and making sure they are signposted.
- Storing firewood and other flammable material away from your house.
- Safe handling and storage of gas or liquid fuels.
- Maintaining machinery and equipment in working order.
- Disposing of ash safely in a metal container and using approved incinerators.



### DURING A FIRE

- Crawl low and fast to escape smoke. 'Get Down, Get Low, Get out.'
- Shut doors behind you to slow the spread of fire
- Meet at the planned meeting place.
- Once out, stay out - never go back inside.
- Phone the Fire Service from a safe phone.

#### Tell the Fire Service

- House number
- Street
- Nearest intersection
- Suburb and city
- Rural ID number if you have one



## AFTER A FIRE

- Nothing can really prepare you for the impact of a fire or other emergency on your family and property. Even a small fire or flood can make you feel helpless and unsure of what to do next. This is entirely understandable. The New Zealand Fire Service regularly sees home owners faced with the same distressing situation. Here's some guidance on the important things you need to do now that the unimaginable has happened.
- Do not enter your damaged house unless you have to and have been advised it is safe to do so. The Fire Service will check the water, electricity and gas supplies and either arrange to have them disconnected or advise you what action to take.
- If you can't enter your home, you'll need to arrange accommodation. You may need to stay with family, friends or in a motel for at least one night, and longer if the house has been seriously damaged.

## When your house is safe and you are allowed back:

- Try to find your identification, insurance information, medication information, eye glasses, hearing aid, wallet and valuables
- If the house is too badly damaged to live in, board up openings to discourage trespassers
- You may need to arrange security patrols to protect it from burglary
- Keep receipts for expenses resulting from the fire, such as accommodation or clothes
- Get supplies of medicine or eye glasses.

## Have you considered installing sprinklers?

Home sprinklers will protect your family, home and contents from the threat of fire - 24 hours a day.

Sprinkler technology has come a long way in a short space of time. The cost of including home sprinklers into a new house or adding them as part of major renovations is probably a lot cheaper than you think.

Home sprinklers use the same domestic plumbing as your kitchen taps and can be installed by a qualified plumber in less than two days.

More importantly though, sprinklers provide the fastest possible means of extinguishing fires in rural homes.

For more information visit [www.fireandemergency.nz](http://www.fireandemergency.nz)

## Fire seasons

There are three fire seasons you should be aware of:

**Open fire season** - a fire permit is not required to light a fire in the open air.

**Restricted fire season** - in this season a fire permit from your local Rural Fire Authority is required before you can light a fire in the open air.

**Prohibited fire season** - means a total fire ban is in place. Lighting fires in the open air is not permitted,

For the current fire season and to apply for fire permits contact Fire and Emergency NZ or visit [www.checkitsalright.nz](http://www.checkitsalright.nz)

# get thru...



## Emergency contact information

Do not call 111 for information and advice. Calling 111 unnecessarily may put others who are in a genuine emergency situation at risk.



Dial 111 (Emergencies Only)  
[www.police.govt.nz](http://www.police.govt.nz)  
Dial 105 (non-emergency)



Dial 111 (Emergencies Only)  
For General Fire Safety advice visit  
[www.fireandemergency.nz](http://www.fireandemergency.nz)



Dial 111 (Emergencies Only)  
[www.stjohn.org.nz](http://www.stjohn.org.nz)



0800 727 059  
0800 100 388 (Mangawhai)  
[www.kaipara.govt.nz](http://www.kaipara.govt.nz)



Marine Assistance 09 303 1303  
\*500 from your mobile  
VHF Marine Channel 07 & 61/66  
  
[www.coastguard.org.nz](http://www.coastguard.org.nz)



0800 002 004  
[www.nrc.govt.nz](http://www.nrc.govt.nz)



0800 438 894  
[www.uriohau.com](http://www.uriohau.com)



09 439 6443  
[teroroa.iwi.nz](http://teroroa.iwi.nz)



0800 362 468  
[www.doc.govt.nz](http://www.doc.govt.nz)



[www.nzta.govt.nz](http://www.nzta.govt.nz)



[www.civildefence.govt.nz](http://www.civildefence.govt.nz)



[www.aaroadwatch.co.nz](http://www.aaroadwatch.co.nz)



[www.metservice.com](http://www.metservice.com)

## Northpower

0800 10 40 40  
[www.northpower.com](http://www.northpower.com)



## For further information:

### LOCAL COUNCIL

Kaipara District Council  
**0800 727 059**  
**0800 100 388** (Mangawhai)  
[www.kaipara.govt.nz](http://www.kaipara.govt.nz)

Whangarei District Council  
**0800 932 463**  
[www.wdc.govt.nz](http://www.wdc.govt.nz)

Far North District Council  
**0800 920 029**  
[www.fndc.govt.nz](http://www.fndc.govt.nz)

Northland Regional Council  
**0800 002 004**  
[www.nrc.govt.nz](http://www.nrc.govt.nz)

### CIVIL DEFENCE

Northland Civil Defence  
[www.nrc.govt.nz/civildefence](http://www.nrc.govt.nz/civildefence)  
[www.facebook.com/civildefencenorthland](https://www.facebook.com/civildefencenorthland)

National Emergency Management Agency  
[www.civildefence.govt.nz](http://www.civildefence.govt.nz)

Urban Search and Rescue  
[www.usar.govt.nz](http://www.usar.govt.nz)

Be prepared  
[www.getready.govt.nz](http://www.getready.govt.nz)  
[www.getthru.govt.nz](http://www.getthru.govt.nz)  
[www.happens.nz](http://www.happens.nz)

### EMERGENCY SERVICES

New Zealand Police  
[www.police.govt.nz](http://www.police.govt.nz)

Fire & Emergency New Zealand  
[www.fireandemergency.nz](http://www.fireandemergency.nz)

St John Ambulance  
[www.stjohn.org.nz](http://www.stjohn.org.nz)

Coast Guard New Zealand  
[www.coastguard.nz](http://www.coastguard.nz)