


FNDC WWTP compliance: Hihi, Whatuwhiwhi, Taipa

Presentation to the Doubtless Bay
Working Group
March 2014



Hihi WWTP

- Key consent limits:
- E.coli: 130 per 100ml 95% of the time based on a total 24 samples at UV outlet.
- Ammonia: ANZECC guidelines downstream.
- Downstream dissolved oxygen: reduced by no more than 20% compared to upstream sample

Hihi Results

- Since upgrade in May 2013:
- 2 out of 24 *E.coli* samples exceeded the 130 per 100ml limit, so 95% compliance limit breached.
- Downstream DO higher than upstream DO.
- No breaches in downstream ammonia limit.

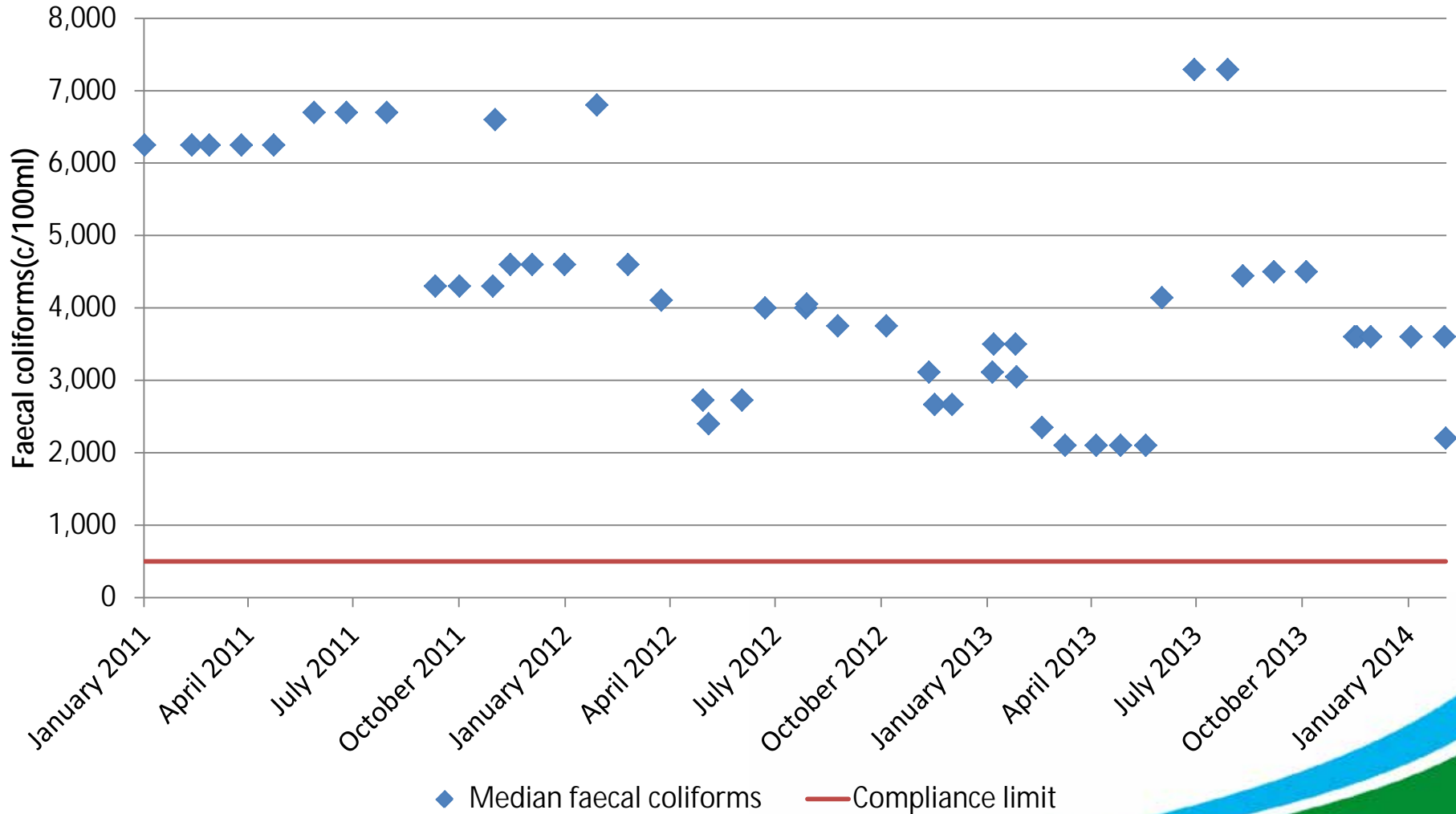
Whatuwhiwhi

- Compliance limit at discharge point:

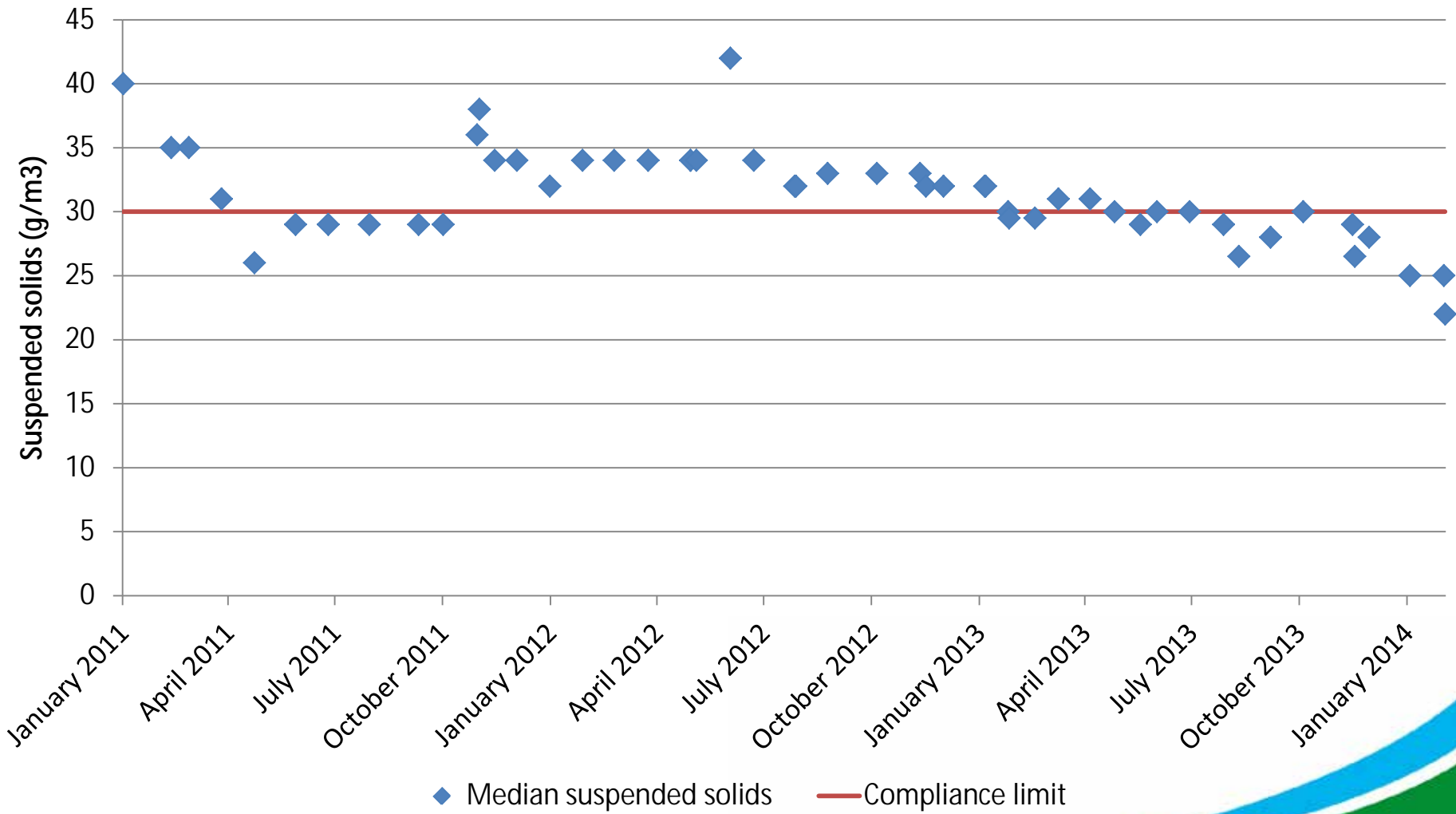
Determinand	Median	90 th %tile
BOD(g/m ³)	30	50
Suspended solids(g/m ³)	30	40
Faecal coliforms (c/100ml)	500	2,600
Ammonia (g/m ³)	30	50

- Median based on 12 most recent samples
- Monthly monitoring at discharge
- Ammonia monitoring: 12 sample median >0.5g/m³

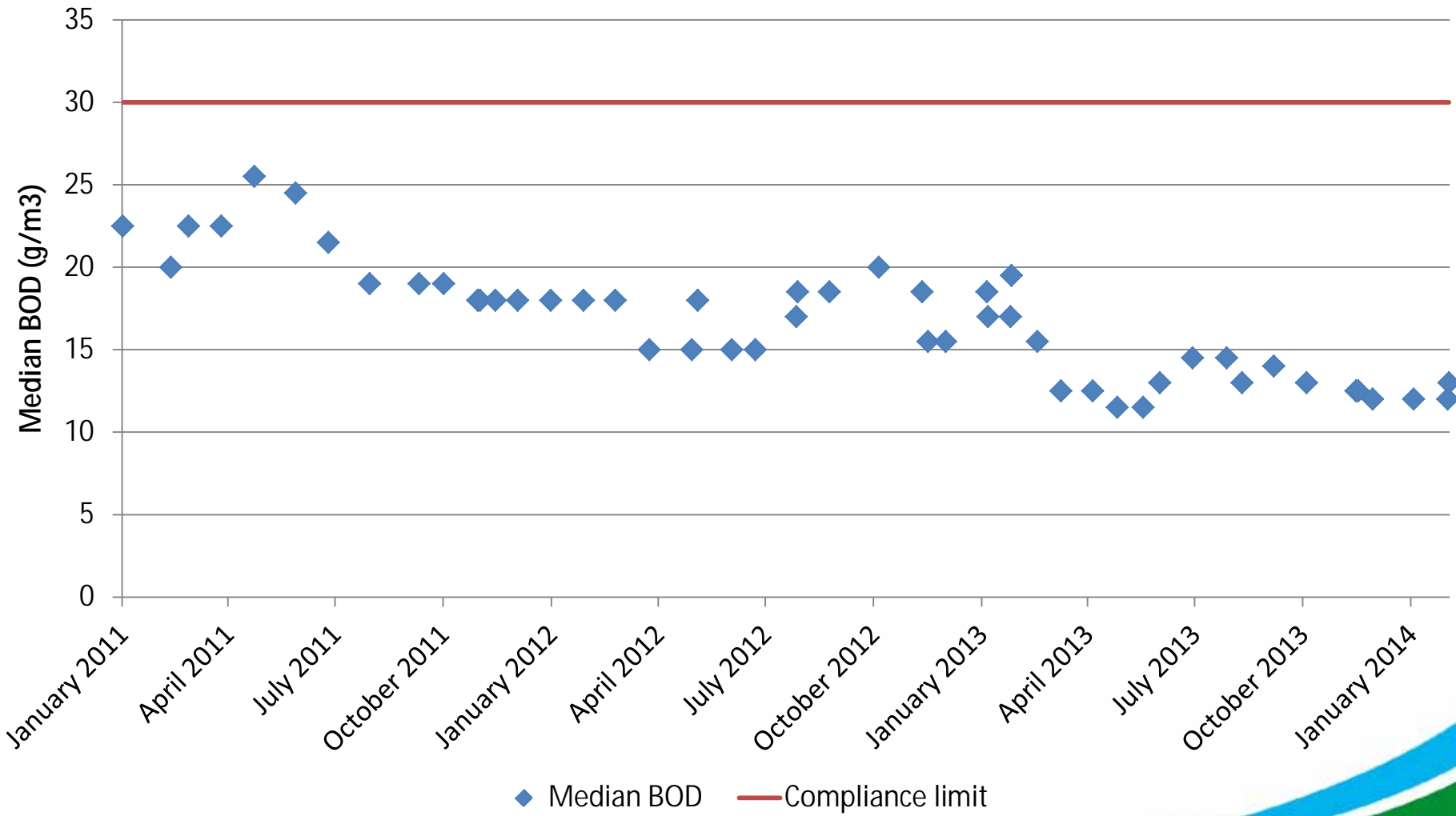
Whatuwhiwhi WWTP 12 sample rolling median: Faecal Coliforms



Whatuwhiwhi WWTP 12 sample rolling median: suspended solids



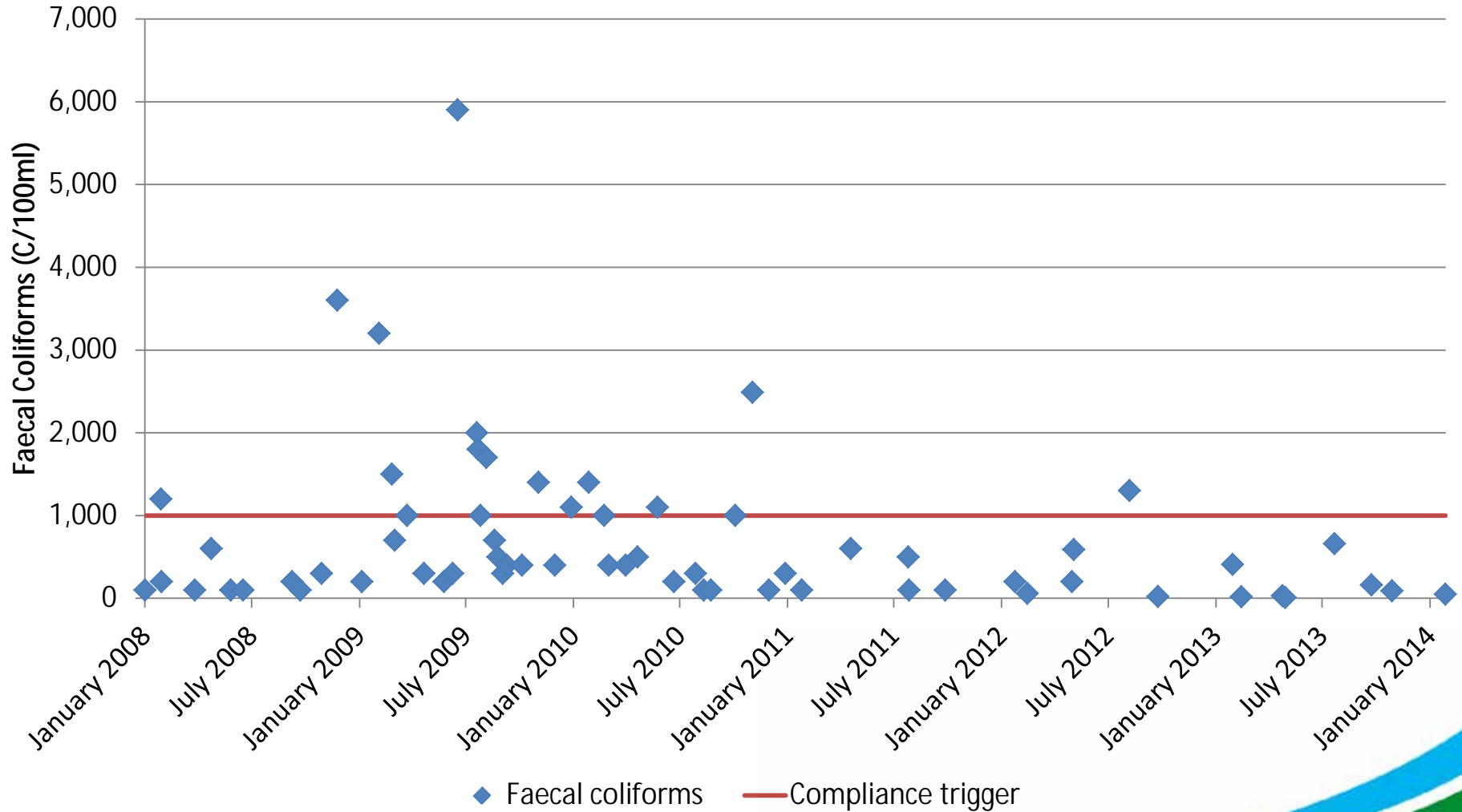
Whatuwhiwhi WWTP 12 sample rolling median: BOD



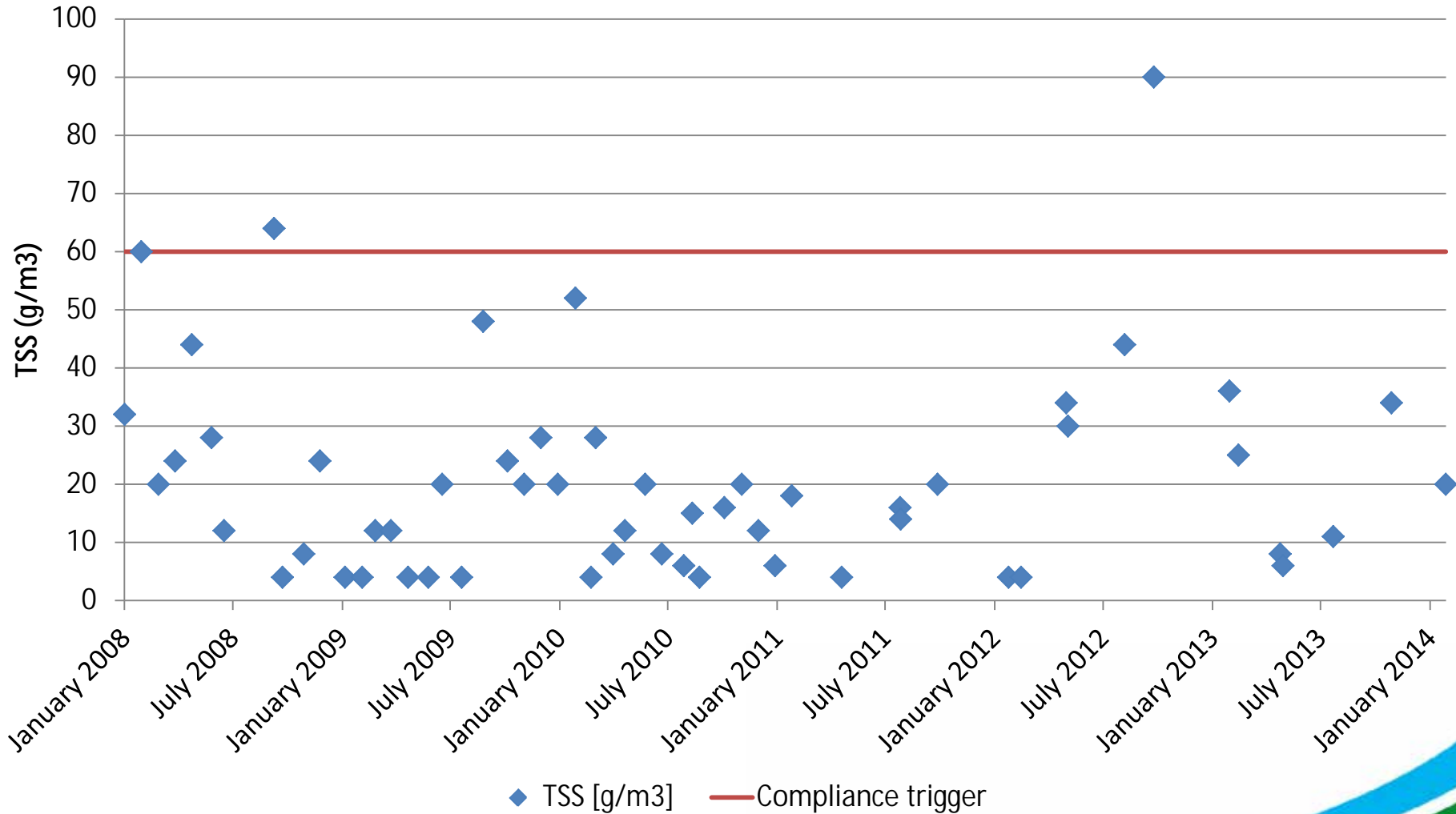
Taipa WWTP

- Four monthly monitoring at wetland outlet:
 - BOD
 - Suspended solids
 - Total ammonia
 - Faecal coliforms
- If triggers for ammonia or faecal coliforms exceeded, then receiving water quality testing required over 3 to 4 days.

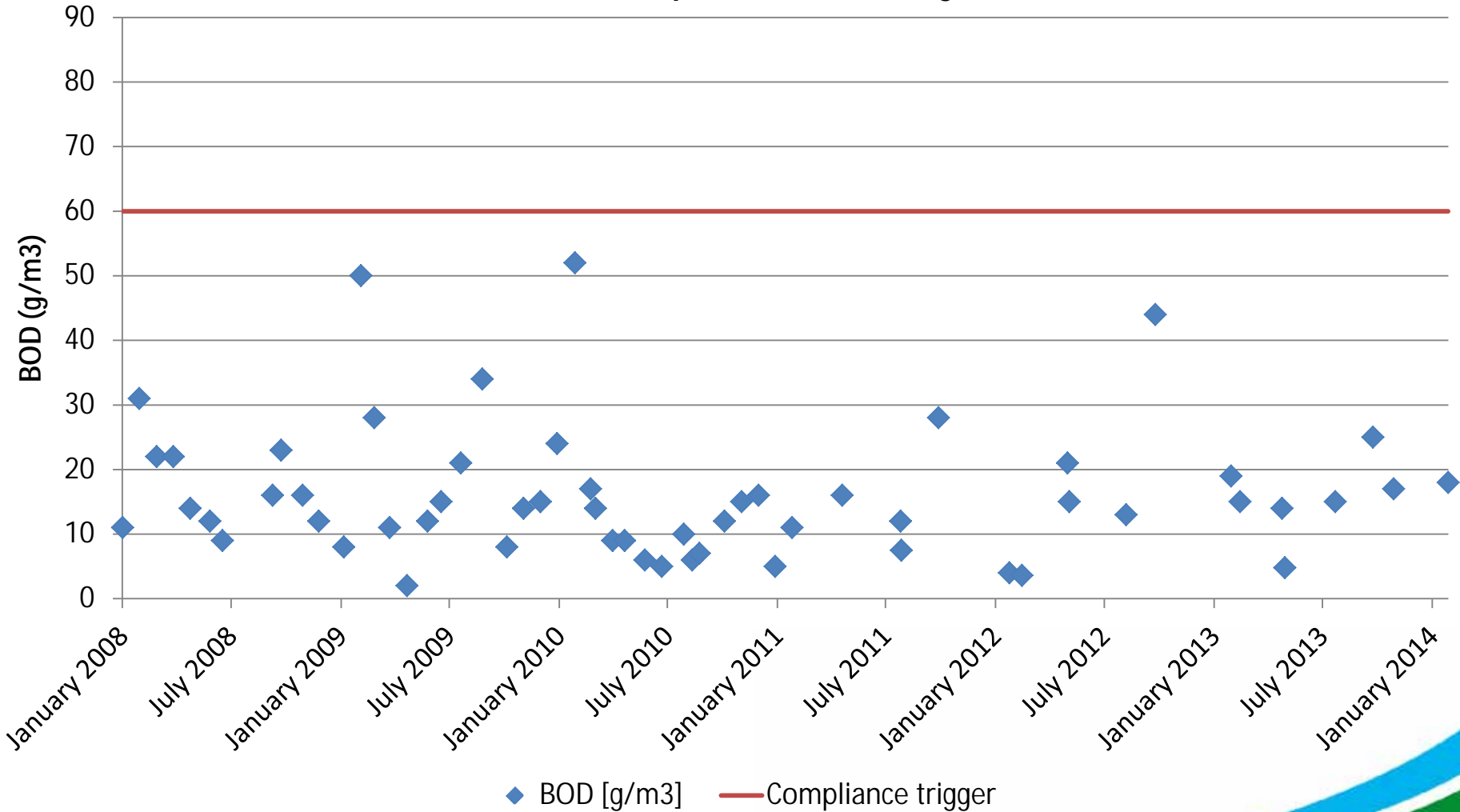
Taipa WWTP Discharge: Faecal coliforms



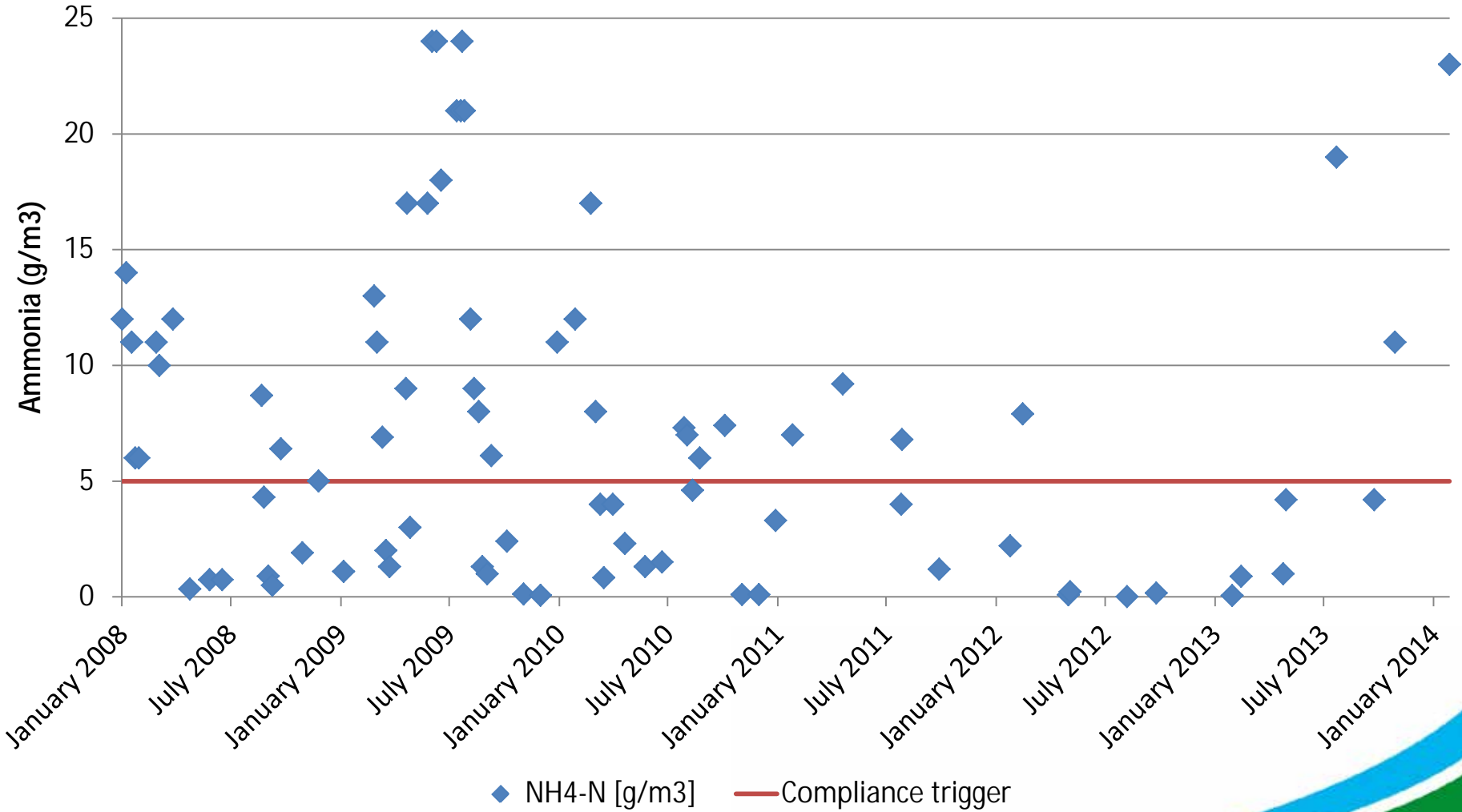
Taipa WWTP Discharge: Total suspended solids



Taipa WWTP Discharge: BOD



Taipa WWTP Discharge: Ammonia



Taipa WWTP: Downstream ammonia compliance

