

## Activities funded by regional rates

### | Ngā mahi e utua ana e ngā reiti a rohe

Your rates assessment lists several regional council rates. This is an overview of what each rate is used for.

## Region-wide rates

### Council services rate

This rate funds a wide range of activities including: planning, consents and monitoring; governance and engagement; economic development; customer services, transport, harbour safety and oil pollution control; corporate services and other activities.

### Land management rate

This rate funds land management activities that have a direct relationship to land, such as erosion control and landowner advice.

### Freshwater management rate

This rate funds activities to improve freshwater quality, such as water quality monitoring and water allocation.

### Pest management rate

This rate funds pest plant and animal management activities on land and in the water and supports community-led pest control projects.

### Flood infrastructure rate

This rate fully or partially funds the development of flood protection infrastructure and other minor river works in communities across Northland.

### Civil Defence and hazard management rate

This rate funds Civil Defence emergency management and natural hazard management activities.

### Emergency services rate

This rate provides funding for organisations whose primary purpose is to save lives that are in immediate or critical danger, or to respond to serious injury.

### Regional sporting facilities rate

This rate contributes funds towards the development of sporting facilities across Northland that are of regional benefit.

### Regional infrastructure rate

This rate funds activities relating to the development and/or completion of infrastructure projects in Northland.

## Local area rates

### | Kaihū River management rate

This rate funds channel maintenance works on the Kaihū River flood management scheme. It is paid only by those in the areas of benefit, differentiated by hectare. Kaipara District Council makes a fixed urban contribution instead of a separate rate per property.

## Find out more

### | Kimihia atu

Information on instalment dates and penalties can be found on your rates assessment.

Northland Regional Council has adopted policies on the remission and postponement of rates and penalties, and the early payment of rates in respect of the Kaipara district that are consistent with Kaipara District Council's policies, to minimise the administrative burden of rates collection.

To view the full policies visit [www.nrc.govt.nz/rates](http://www.nrc.govt.nz/rates)

More detail on what the regional council's activities and budgets are is in our Long Term Plan 2018-2028 – visit [www.nrc.govt.nz/LTP2018](http://www.nrc.govt.nz/LTP2018)

# How your rates help our region thrive

Ka pēhea te pikinga o reiti e tautoko i to tātou rohe



**Northland**  
REGIONAL COUNCIL  
Te Kaunihera ā rohe o Te Taitokerau

About Northland Regional Council's  
2018/2019 rates – Kaipara District

# Our Northland – together we thrive

| Ko Te Taitokerau – mahi tahi tatou

As your regional council, that's the ultimate goal for our incredible region.

We're working together with others to create a healthy environment, strong economy and resilient communities.

And your rates help pay for a whole heap of work to care for Northland's amazing environment and many unique communities.

We can't do it all alone, so your rates also help support things like the fantastic mahi of local groups to get rid of pests and help native life flourish.

**Toitū te whenua,  
Toitū te moana,  
Toitū te tangata**



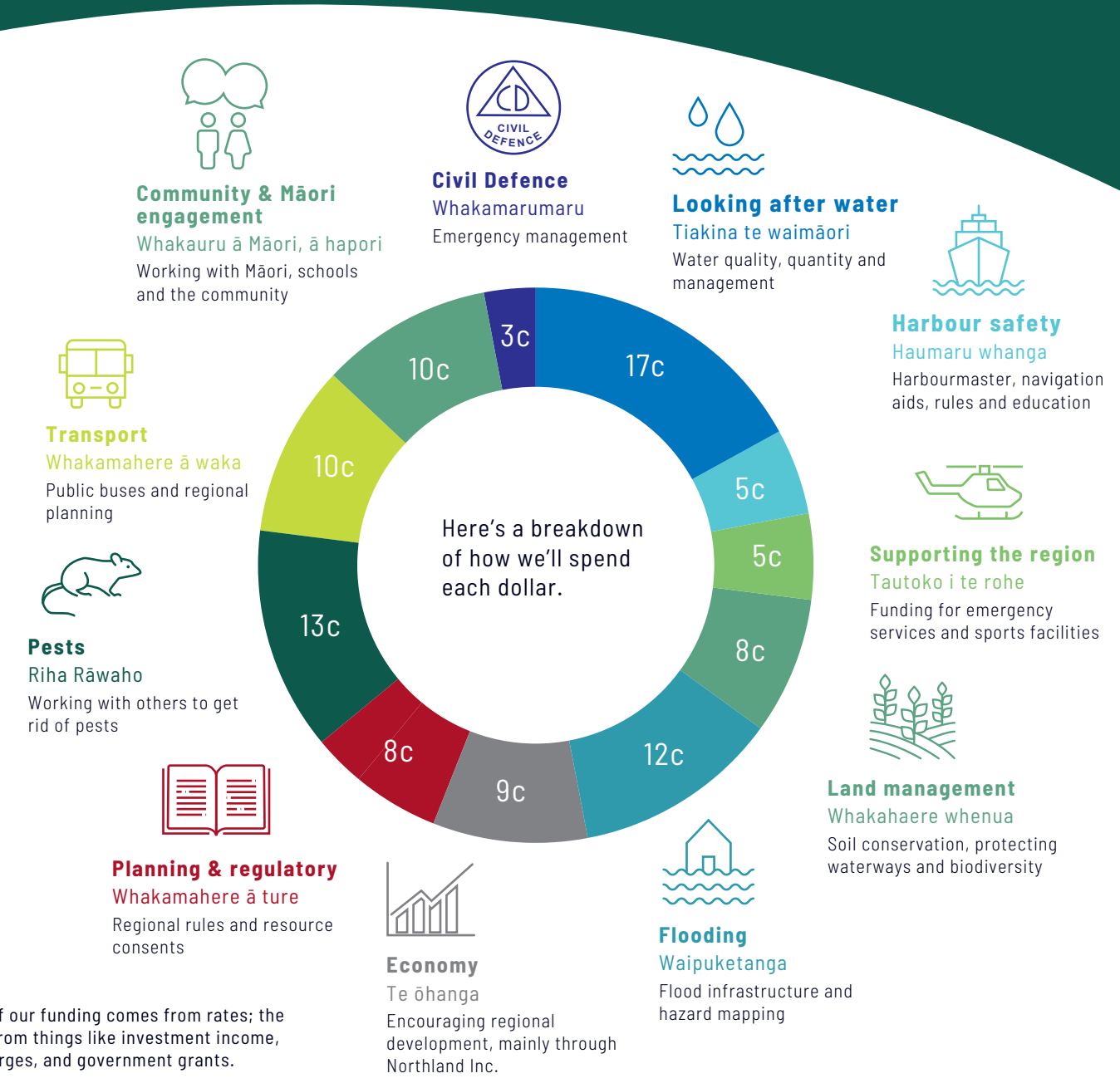
**If the land is well,  
If the sea is well,  
The people will thrive**

## Where the money goes

| E hea te pūtea e pau

Your rates, together with the funding we get from other sources, will be put to work right across the region.

We're investing more than ever before in caring for water, getting rid of pests and flood protection infrastructure, in line with what the community has told us.



**Community & Māori engagement**  
Whakauru ā Māori, ā hapori  
Working with Māori, schools and the community



**Civil Defence**  
Whakamarumaruru  
Emergency management



**Looking after water**  
Tiakina te waimāori  
Water quality, quantity and management



**Harbour safety**  
Haumaruru whanga  
Harbourmaster, navigation aids, rules and education



**Supporting the region**  
Tautoko i te rohe  
Funding for emergency services and sports facilities



**Land management**  
Whakahaere whenua  
Soil conservation, protecting waterways and biodiversity



**Flooding**  
Waipuketanga  
Flood infrastructure and hazard mapping



**Economy**  
Te ōhanga  
Encouraging regional development, mainly through Northland Inc.



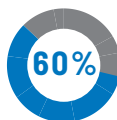
**Planning & regulatory**  
Whakamahere ā ture  
Regional rules and resource consents



**Pests**  
Riha Rāwaho  
Working with others to get rid of pests



**Transport**  
Whakamahere ā waka  
Public buses and regional planning



About 60% of our funding comes from rates; the rest comes from things like investment income, fees and charges, and government grants.