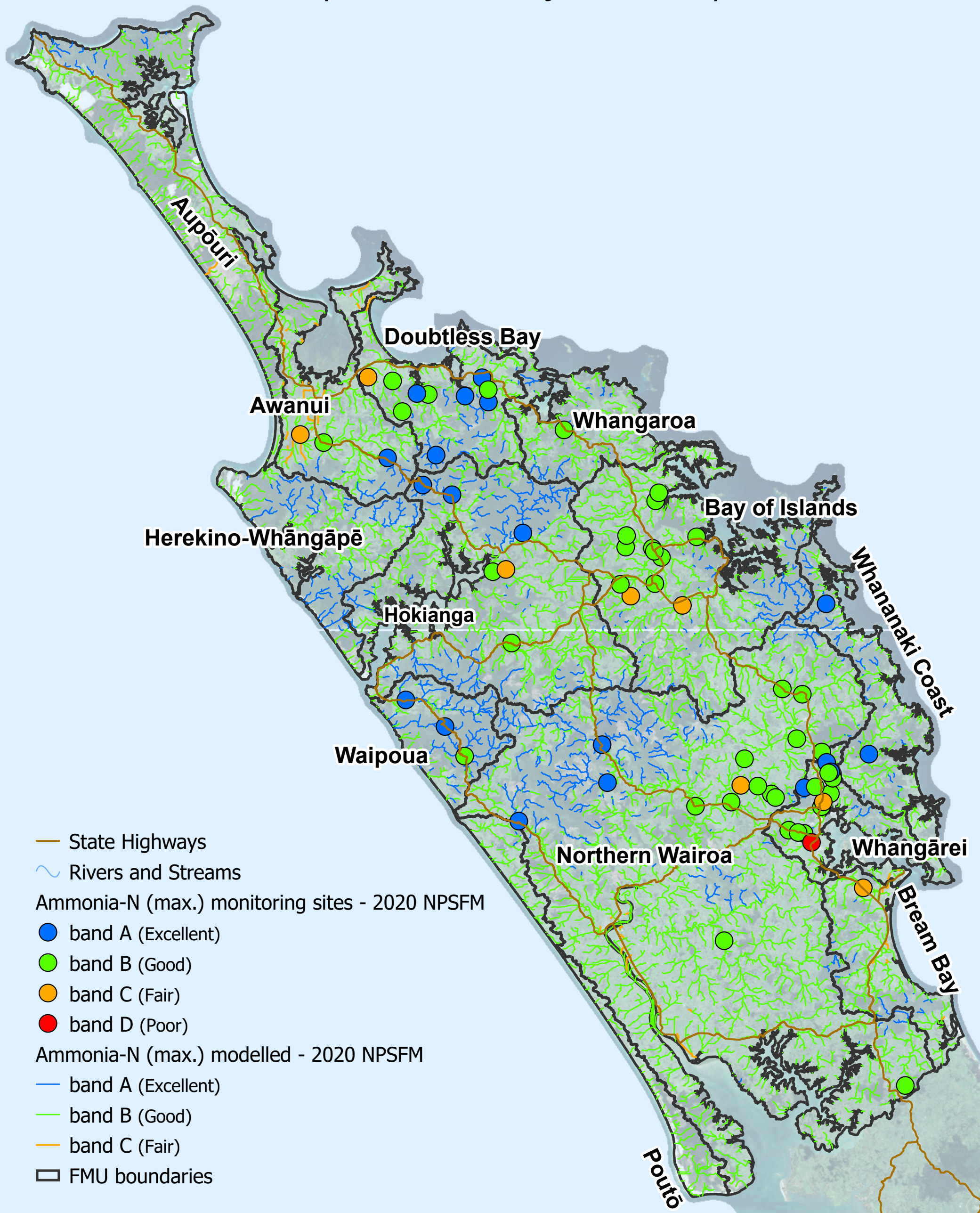




Northland river water quality baseline state (2015 - 2019) (Ammonia toxicity - maximum)



— State Highways

~ Rivers and Streams

Ammonia-N (max.) monitoring sites - 2020 NPSFM

● band A (Excellent)

● band B (Good)

● band C (Fair)

● band D (Poor)

Ammonia-N (max.) modelled - 2020 NPSFM

— band A (Excellent)

— band B (Good)

— band C (Fair)

□ FMU boundaries