

APPENDIX 4

DISCHARGE PERMITS [2008]

The following are recently expired consents for Discharges being exercised under section 124 of the Act: AUT.007914.10–13 and AUT.007914.15



CON20060791410
(10-15)

Resource Consent

Pursuant to the Resource Management Act 1991, the Northland Regional Council (hereinafter called "the Council") does hereby grant a Resource Consent to:

DOUG'S OPUA BOATYARD (D C SCHMUCK), 1 RICHARDSON STREET, OPUA 0200

To carry out the following activities associated with the operation of a boatyard at Richardson Street, Opuā:

- (10) To discharge treated wash water to the coastal marine area at or about location co-ordinates 1701520E 6091850N.
- (11) To discharge contaminants to air from marine vessel construction, sale, repair, maintenance and associated activities on Sec 2 SO 24139, Pt Sec 1 SO 16553, Sec 3 SO 46155, Sec 1 – 4 SO 63634, Blk V Russell SD, at or about location co-ordinates 1701470E 6091840N.
- (12) To discharge contaminants to air in the coastal marine area from marine vessel construction, sale, repair, maintenance and associated activities at or about location co-ordinates 1701520E 6091850N.
- (13) To discharge contaminants to ground as a result of boat maintenance activities on Sec 2 SO 24139, Pt Sec 1 SO 16553, Sec 3 SO 46155, Secs 2 and 3 SO 63634, Blk V Russell SD at or about location co-ordinates 1701470E 6091840N.
- (14) To discharge stormwater to an unnamed tributary of the Veronica Channel on Sec 3 SO 46155 Blk V Russell SD at or about location co-ordinates 1701470E 6091840N.
- (15) To discharge stormwater to the coastal marine area at or about map reference location co-ordinates 1701520E 6091850N.

Note: All location co-ordinates in this document refer to Geodetic Datum 2000, New Zealand Transverse Mercator Projection.

Subject to the following conditions:

- (10) **DISCHARGE OF TREATED WASH WATER TO THE COASTAL MARINE AREA**
 - 1 The total quantity discharged in the exercise of this consent shall not exceed one cubic metre per day.
 - 2 The boat wash water containment system, and CTS treatment system shall be constructed and be fully operational in general accordance with the details provided in the application, by no later than 31 March 2009.

- 3 The wash water discharge treatment system shall:
- (a) Retain all particles larger than 60 micrometres (μm) diameter.
 - (b) Retain no less than 90% of total suspended solids.
 - (c) Retain no less than 80% total copper and zinc, and no less than 80% soluble copper and zinc.

4 Notwithstanding any other conditions of this consent, the discharge shall not result in any of the following effects in the receiving waters, at or beyond the edge of the mixing zone:

- (a) A reduction in the dissolved oxygen concentration to below 80% of saturation.
- (b) A change in the natural water temperature greater than three degrees Celsius.
- (c) A change in the natural pH greater than 0.2 units.
- (d) The change in water clarity as measured by the black disc method shall not be greater than 20%.
- (e) The change in hue as measured with the Maunsell Colour Chart System shall not exceed 10 units.
- (f) The production of any conspicuous oil or grease films, scums or conspicuous floating or suspended materials.
- (g) The concentration of metals shall not exceed the following:

total copper	0.0013 g/m ³
total lead	0.0044 g/m ³
total zinc	0.015 g/m ³

Guideline: ANZEEC 2000: 95% specie level of protection for slightly-moderately disturbed systems.

- (h) Any emission of objectionable odour.
- (i) Any adverse effect on aquatic life.

The harbour waters within a 10 metre radius of the discharge point, shall be deemed to be the mixing zone for this discharge.

When the background water quality in the coastal waters does not meet the above standards, then the discharge shall not cause the water quality in the harbour at the edge of the mixing zone to be worse than the background water quality.

(Note: For compliance purposes, when comparing background and receiving water quality results the error of the analytical method, or measuring instrument, at the 95%ile confidence level shall be taken into account.

The Consent Holder shall provide and maintain easy access to a sampling point in the discharge pipe at the end of the jetty. This shall allow for the taking of samples, and the introduction of tracer substances as required.)

(11 & 12) DISCHARGES TO AIR

- 5 Except as required by the following conditions, no alteration shall be made to plant or processes that may significantly change the nature, effects, or quantity of contaminants discharged as described in the consent application without the prior written approval of the Council.
- 6 The exercise of this consent shall not give rise to any discharge of contaminants, which is noxious, dangerous, offensive or objectionable at or beyond the boundaries of Sec 2 SO 24139, Pt Sec 1 SO 16553, Sec 3 SO 46155, Sec 1 – 4 SO 63634, Blk V and the area within the Coastal Marine Area defined by the Offensive Odour Boundary in NRC Plan No 3231c.
- 7 Where practicable, the Consent Holder shall preferentially use surface coating materials and application methods that have a low odour and/or low emission/loss potential.
- 8 All operations shall be conducted with regard to wind direction and wind strength to prevent or minimise any adverse effects on the environment.
- 9 Notwithstanding Condition 8, the Consent Holder shall not apply antifouling paint using spray application equipment when the wind speed is below 0.5 m/s (as a 60 second average) or the wind direction (as a 60 second average) is blowing from between 45 degrees through to 170 degrees.
- 10 The discharge of contaminants into the air from the exercise of this consent shall not cause or significantly contribute to ambient concentrations of the following contaminants exceeding the following limits at or beyond the boundaries of Sec 2 SO 24139, Pt Sec 1 SO 16553, Sec 3 SO 46155, Sec 1 – 4 SO 63634, Blk V and the area within the Coastal Marine Area defined by the Offensive Odour Boundary in NRC Plan No 3231c.

Contaminant	Ambient Limit (micrograms per cubic metre)
Particulate (PM ₁₀)	50 micrograms per cubic metre (24 hour average)
Lead and lead compounds expressed as lead	0.5 micrograms per cubic metre (3 month moving average)
Copper and copper compounds expressed as copper	20 micrograms per cubic metre (8 hour average)
Zinc and zinc compounds expressed as zinc	4.8 micrograms per cubic metre (8 hour average)
Tin and tin compounds expressed as tin	2.4 micrograms per cubic metre (8 hour average)
Isocyanates, (as –NCO), including all isocyanates and pre-polymers as mists, dusts, and vapours	0.048 micrograms per cubic metre (8 hour average)

- 11 As far as is practicable, work areas and surrounding areas shall be cleared of accumulations of waste generated as a result of, and as soon as is practicable after completion of any abrasive blasting or water blasting operation. All waste material shall be disposed of at a location with the appropriate resource consents.

- 12 Dry abrasive blasting operations shall only be carried out when the object's size, shape or weight prevents it being practicably transported and blasted in an abrasive blasting booth for which appropriate resource consents are held.
- 13 All items to be dry blasted outside of a booth shall be screened by means of covers, tarpaulins, cladding, or other means, as completely as is practicable, to contain dust emissions and depositions, and to restrict the spread of all blasting debris.
- 14 All abrasive used for abrasive blasting shall contain less than 2% by dry weight free silica.

(13) DISCHARGE TO GROUND

- 15 The Consent Holder shall undertake such measures as are necessary to minimise the discharge of contaminants to ground within the boatyard site and adjacent Esplanade Reserve. Notwithstanding the generality of the foregoing, the following measures shall be carried out:
 - (a) Drop sheets shall be used to collect materials that arise from boat maintenance activities within those areas of the boatyard where the yard surface is pervious (ie. metallated areas, grassed areas etc).
 - (b) Maintenance activities shall not take place under conditions that would preclude the use of drop sheets from effectively containing materials that have arisen from boat maintenance activities.

Advice Note: Such conditions may include wind or rain that prevents materials from settling and/or remaining within the confines of the drop sheets.
 - (c) All materials accumulating on drop sheets shall be removed daily or upon the completion of maintenance activities, whichever occurs first. The collected materials shall be disposed of at an authorised hazardous waste treatment or disposal facility.
 - (d) Any materials arising from boat maintenance activities that escape from drop sheets or impervious yard surfaces shall be removed from the yard surface and collected for disposal to an authorised hazardous waste treatment or disposal facility.
 - (e) Water blasting or washing of vessel hulls shall only take place over impervious yard surfaces (ie. the turntable) which are able to collect wastewater for processing via the wastewater treatment system.

All measures shall be incorporated into the Management Plan required in accordance with the requirements of Condition 21 (below).

(14) DISCHARGE OF STORMWATER TO WATER

16 The stormwater discharge treatment system shall:

- (a) Retain all particles larger than 60 micrometres (μm) diameter.
- (b) Retain no less than 90% of total suspended solids.
- (c) Retain no less than 80% total copper and zinc, and no less than 80% soluble copper and zinc.

17 Notwithstanding any other conditions of this consent, the discharge shall not result in any of the following effects in the receiving water, at or beyond the edge of the mixing zone:

- (a) A reduction in the dissolved oxygen concentration to below 80% of saturation.
- (b) A change in the natural water temperature greater than three degrees Celsius.
- (c) A change in the natural pH greater than 0.2 units.
- (d) The change in clarity as measured by the black disc method shall not be greater than 40%.
- (e) The change in hue as measured with the Maunsell Colour Chart System shall not exceed 10 units.
- (f) The production of any conspicuous oil or grease films, scums or conspicuous floating or suspended materials.
- (g) The concentration of metals shall not exceed the following:

total copper	0.0014 g/m ³
total lead	0.0034 g/m ³
total zinc	0.008 g/m ³

Guideline: ANZEEC 2000: 95% specie level of protection for slightly-moderately disturbed systems.

- (h) Any emission of objectionable odour.

The drain waters immediately upstream of the coastal walkway, shall be deemed to be the edge of the mixing zone for this discharge.

When the background water quality in the drain does not meet the above standards, then the discharge shall not cause the water quality in the drain at or beyond the edge of the mixing zone to be worse than the background water quality.

(Note: For compliance purposes, when comparing background and receiving water quality results the error of the analytical method, or measuring instrument, at the 95%ile confidence level shall be taken into account.)

18 The discharge of treated stormwater from the boatyard to the stream authorised by this consent shall be discontinued upon connection of the treated stormwater discharge into the discharge pipe to the wharf.

(15) DISCHARGE OF STORMWATER TO THE CMA

19 The stormwater discharge treatment system shall:

- (a) Retain all particles larger than 60 micrometres (μm) diameter.
- (b) Retain no less than 90% of total suspended solids.
- (c) Retain no less than 80% total copper and zinc, and no less than 80% soluble copper and zinc.

20 Notwithstanding any other conditions of this consent, the discharge shall not result in any of the following effects in the receiving water, at or beyond the edge of the mixing zone:

- (a) A reduction in the dissolved oxygen concentration to below 80% of saturation.
- (b) A change in the natural water temperature greater than three degrees Celsius.
- (c) A change in the natural pH greater than 0.2 units.
- (d) The change in water clarity as measured by the black disc method shall not be greater than 20%.
- (e) The change in hue as measured with the Maunsell Colour Chart System shall not exceed 10 units.
- (f) The production of any conspicuous oil or grease films, scums or conspicuous floating or suspended materials.
- (g) The concentration of metals shall not exceed the following:

total copper	0.0013 g/m ³
total lead	0.0044 g/m ³
total zinc	0.015 g/m ³

Guideline: ANZECC 2000: 95% specie level of protection for slightly-moderately disturbed systems.

- (h) Any emission of objectionable odour.
- (i) Any adverse effect on aquatic life.

The harbour waters within a 10 metre radius of the discharge point shall be deemed to be the mixing zone for this discharge.

When the background water quality in the coastal waters does not meet the above standards, then the discharge shall not cause the water quality in the harbour at the edge of the mixing zone to be worse than the background water quality.

(Note: For compliance purposes, when comparing background and receiving water quality results the error of the analytical method, or measuring instrument, at the 95%ile confidence level shall be taken into account.)

GENERAL CONDITIONS APPLYING TO CONSENTS (10 TO 15)

21 The Consent Holder shall maintain the Management Plan that has been approved by the Council (see Advice Note 1 below). The Management Plan shall cover all aspects of:

- (a) The operation and maintenance of the boat washdown area;
- (b) The operation and maintenance of the wash water treatment system;
- (c) The operation and maintenance of the stormwater treatment system;
- (d) Measures to minimise the discharge of contaminants to ground. (see Note 2)
- (e) Measures to minimise the emissions and any adverse effects on the environment from the discharges to air; and
- (f) Contingency measures for unforeseen or emergency situations.

The operation and maintenance of the above systems, and the boatyard operations, shall be carried out in accordance with the approved Management Plan.

*Advice Note: The initial approved Management Plan shall be that **attached to this consent.***

22 The Consent Holder shall review the Management Plan, in consultation with the Council, at no greater than three yearly intervals.

23 The Consent Holder shall maintain all facilities covered by these consents in good order and repair.

24 The Consent Holder shall, for the purposes of adequately monitoring the consent as required under Section 35 of the Act, maintain records of any complaints relating to the discharge of contaminants received by the Consent Holder, as detailed below:

- (a) The name and address of the complainant;
- (b) The date and time the complaint is received;
- (c) The duration of the event that gave rise to the complaint;
- (d) The location from which the complaint arose;
- (e) The weather conditions prevailing at that time;
- (f) Any events in the management and operation of any processes that may have resulted in the increased discharge of contaminants; and
- (g) Any actions taken by the Consent Holder, where possible, to minimise the contaminant emissions.

The Consent Holder shall notify the Council, as soon as is practicable, of any complaint received. Records of the above shall be sent to the Council upon request.

25 The Consent Holder shall, for the purposes of adequately monitoring the consent as required under Section 35 of the Act, on becoming aware of any contaminant associated with the Consent Holder's operations escaping otherwise than in conformity with this consent:

- (a) Immediately take such action, or execute such work as may be necessary, to stop and/or contain such escape; and
- (b) Immediately notify the Council by telephone of an escape of contaminant; and
- (c) Take all reasonable steps to remedy or mitigate any adverse effects on the environment resulting from the escape; and
- (d) Report to the Council in writing within one week on the cause of the escape of the contaminant and the steps taken or being taken to effectively control or prevent such escape.

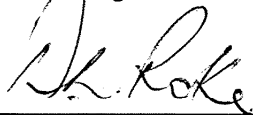
26 The Council may, in accordance with Section 128 of the Resource Management Act 1991, serve notice on the Consent Holder of its intention to review the conditions of this consent annually during the month of May. The review may be initiated for any one or more of the following purposes:

- (a) To deal with any adverse effects on the environment that may arise from the exercise of the consent and which it is appropriate to deal with at a later stage, or to deal with any such effects following assessment of the results of the monitoring of the consent and/or as a result of the Council's monitoring of the state of the environment in the area;
- (b) To require the adoption of the best practicable option to remove or reduce any adverse effect on the environment;
- (c) To provide for compliance with rules in the regional coastal plan relating to minimum standards of water quality that have been made operative since the commencement of the consent;
- (d) To deal with any material inaccuracies that may in future be found in the information made available with the application. (Notice may be served at any time for this reason).

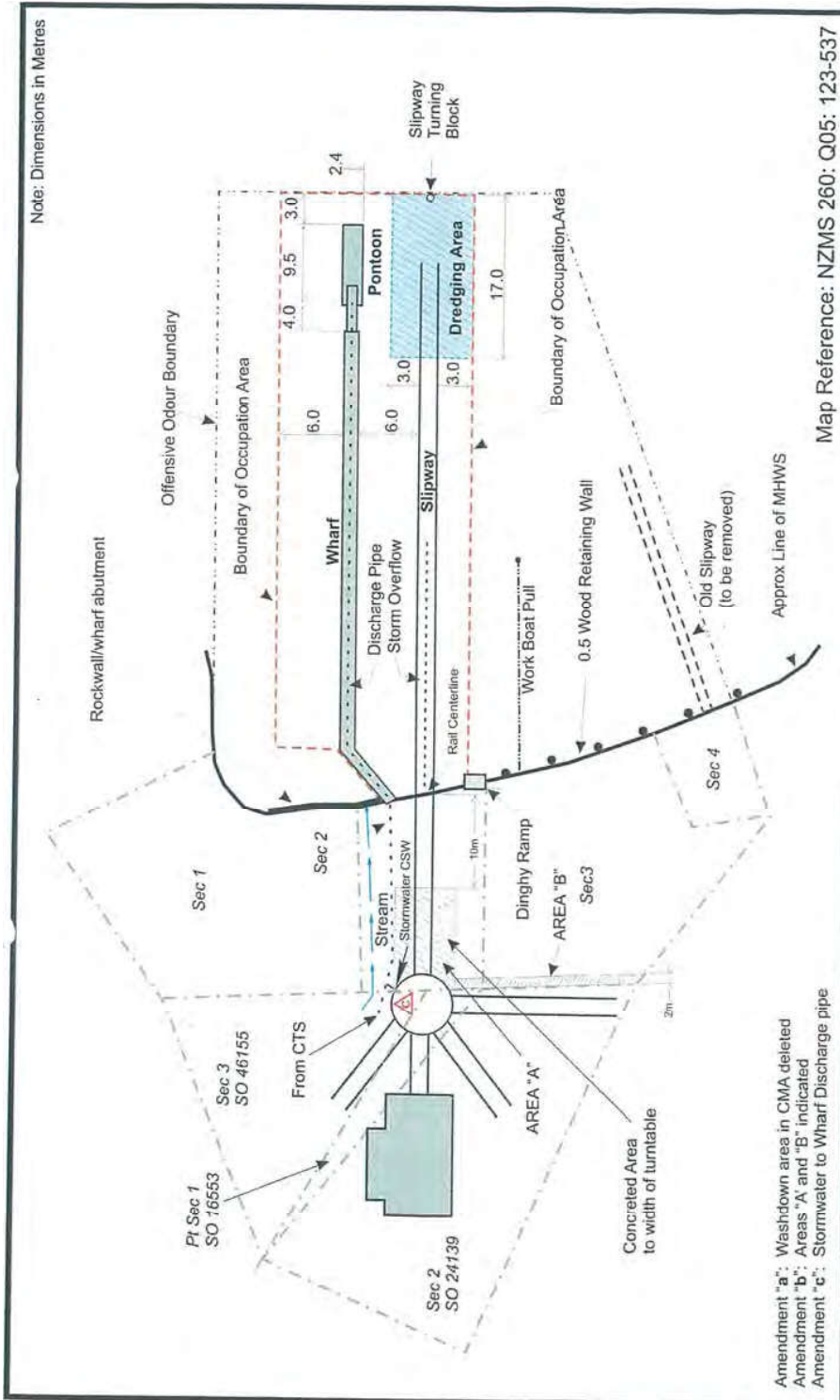
The Consent Holder shall meet all reasonable costs of any such review.

**EXPIRY DATE: 30 MARCH 2018 – for Resource Consents CON20060791410-13
and CON20060791415**
30 MARCH 2009 – for Resource Consent CON20060791414

ISSUED at Whangarei this Twentieth Day of May 2008



DL Roke
Consents Manager



NORTHLAND REGIONAL COUNCIL

Scale: N.T.S. Plan No. 3231c

RESOURCE CONSENT NLD 99 7914
for
Doug's Opua Boat Yard
Boat Maintenance Facilities - Opua

No.	By	Date
a	C N Anderson	03/01
b	C N Anderson	12/01
c	C N Anderson	01/08

Amendment "a": Washdown area in CMA deleted
 Amendment "b": Areas "A" and "B" indicated
 Amendment "c": Stormwater to Wharf Discharge pipe