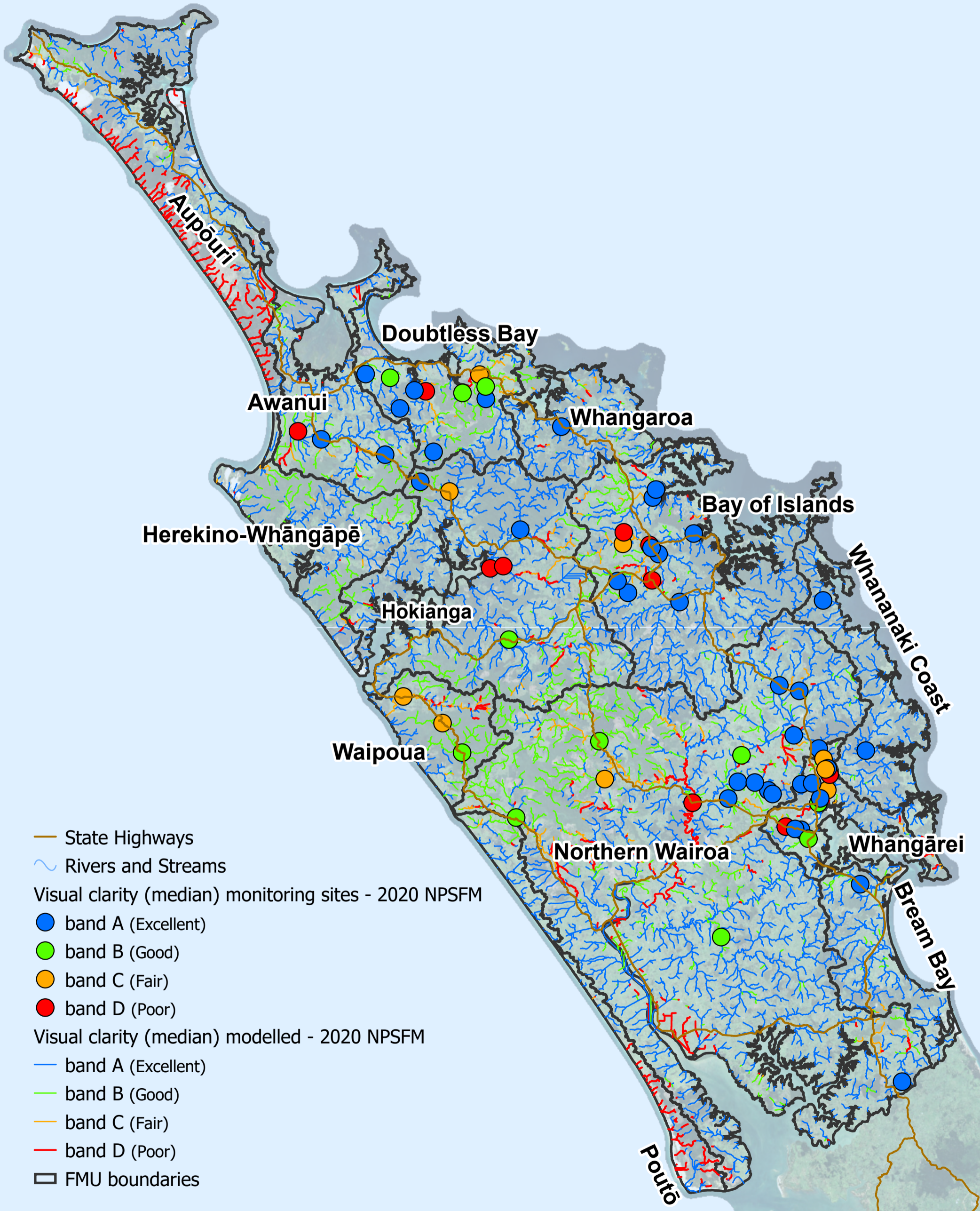


# Northland river water quality baseline state (2015 - 2019) (suspended fine sediment - median visual clarity)



- State Highways
- Rivers and Streams
- Visual clarity (median) monitoring sites - 2020 NPSFM
  - band A (Excellent)
  - band B (Good)
  - band C (Fair)
  - band D (Poor)
- Visual clarity (median) modelled - 2020 NPSFM
  - band A (Excellent)
  - band B (Good)
  - band C (Fair)
  - band D (Poor)
- FMU boundaries