

Legend:

- Surficial Clays
- Basalt, Scoriaceous
- Basalt
- Basalt, highly weathered
- Basement
- Inferred formation contacts
- Bore Locations

Document Status:

SKM-AUCK I:\Projects\AE03739\Technical\Drawings\...
Corel

Filename	Name	Date
Cross Sections A and B.cdr	VLC	Aug 09

Data Notes:

Bore labels in brackets denote offset positioning of bore from cross section line and indicate interpolation.

Horizontal Scale = 1 : 25,000
Vertical Scale = 1 : 2,500

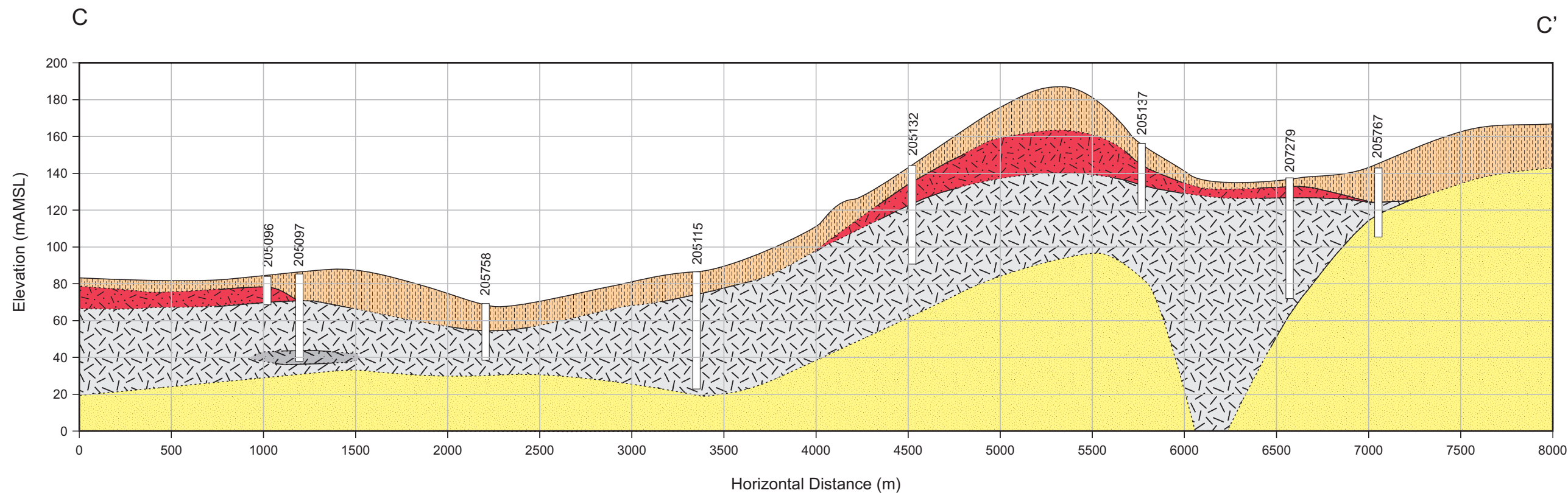
The location of the cross sections are shown on Figure 3.

12-16 Nicholls Lane, Parnell,
PO Box 9806, Newmarket
Auckland, NEW ZEALAND
Tel +64 9 928 5500
Fax +64 9 928 5501

Title:

Geological Cross Sections

Figure 10a.



Legend:

- Surficial Clays
- Basalt, Scoriaceous
- Basalt
- Basalt, highly weathered
- Basement
- Inferred formation contacts
- Bore Locations

Document Status:

SKM-AUCK I:\Projects\AE03739\Technical\Drawings\...
Core1

Filename	Name	Date
Cross Sections A and B.cdr	VLC	Aug 09

Data Notes:

Bore labels in brackets denote offset positioning of bore from cross section line and indicate interpolation.

Horizontal Scale = 1 : 25,000
Vertical Scale = 1 : 2,500

The location of the cross sections are shown on Figure 3.

12-16 Nicholls Lane, Parnell,
PO Box 9806, Newmarket
Auckland, NEW ZEALAND
Tel +64 9 928 5500
Fax +64 9 928 5501

Title:

Geological Cross Sections

Figure 10b.