



LOCAL ELECTIONS GUIDE 2022



IT'S TIME. KUA TAE TE WĀ.

**FIND OUT HOW TO STAND, ENROL,
VOTE AND GET INVOLVED.**





Ihirangi

Contents

Nau mai, haere mai

Our council	01
Constituencies	02
Māori constituencies	03
Electoral system	04
Electoral Officer	05
Key dates	06
Enrolling to vote	07
Standing for elections	08
Voting	09
Contact details	10

The local elections for members of the Northland Regional Council will be held on Saturday 8 October 2022. We've put together this booklet to guide you through the election process, including key dates and information on how to enrol, how to stand and how to vote in the 2022 Local Government Election.

We'll be adding more detailed information to our website throughout the election process, so if you can't find what you're looking for in this guide, please keep checking online at nrc.govt.nz/elections.

Our Council

Tō Tātou Kaunihera

Northland Regional Council is your council and, together with our communities, we're working toward a vision of a thriving Northland.

The Northland Regional Council is made up of the Chair and eight councillors who represent our whole region, Te Taitokerau. Local elections are held every three years to choose our representatives on council.

After an extensive representation review in 2021, the Local Government Commission has determined representation of the Northland region for the 2022 local elections as follows:

Elected members

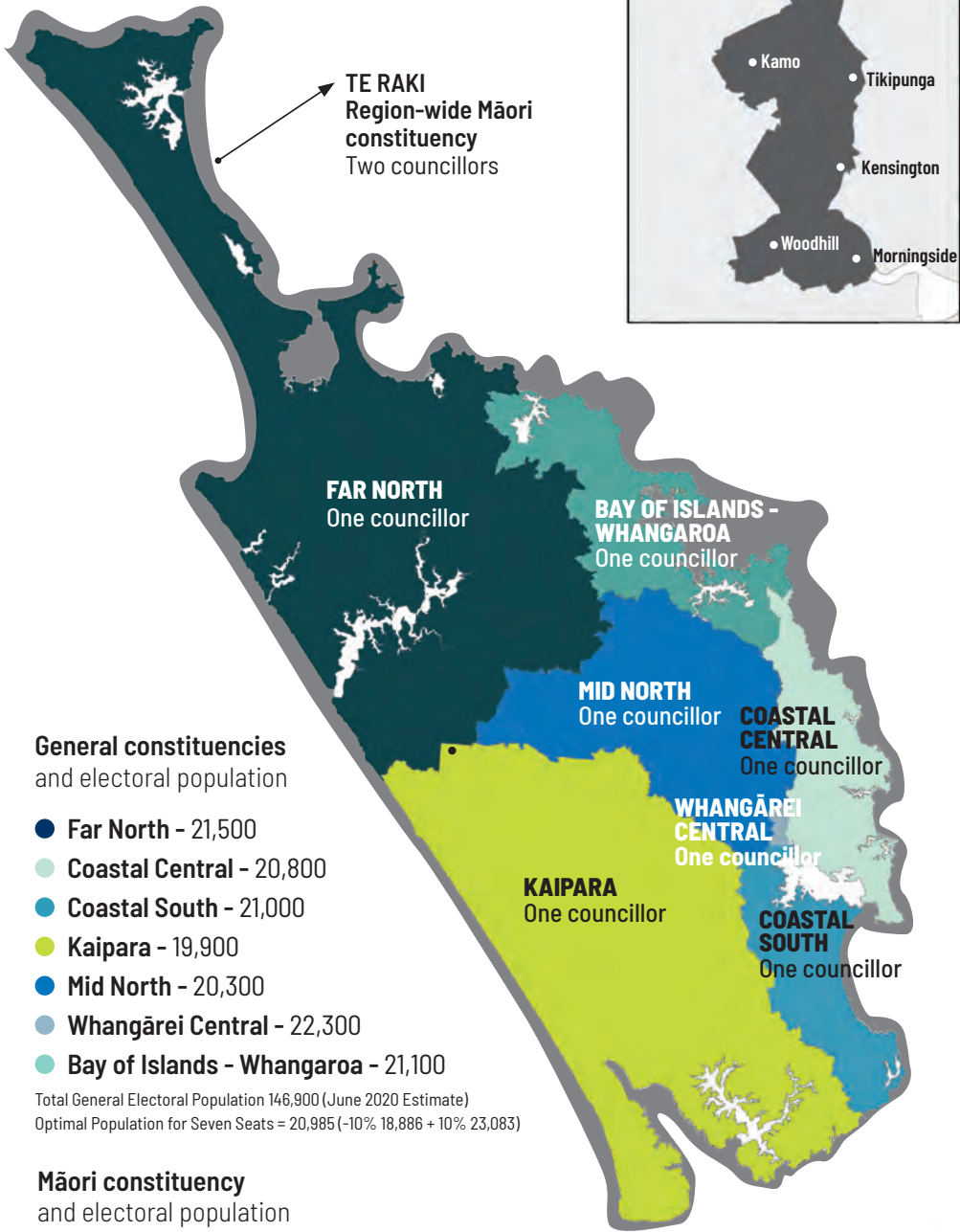
The nine councillors that make up the Northland Regional Council are:

- » Seven general constituency councillors elected by constituency (by electors enrolled on the general roll); and
- » Two Māori constituency councillors elected by one region-wide constituency (by electors enrolled on the Māori roll)
- » The Chair is elected at the first meeting of council following the local elections.

Constituencies

The Northland Regional Council is divided into seven general constituencies and one region-wide Māori constituency as follows:

CONSTITUENCY	MEMBERS
Bay of Islands – Whangaroa General	1
Coastal Central General	1
Coastal South General	1
Far North General	1
Kaipara General	1
Mid North General	1
Whangārei Central General	1
Te Raki Māori	2
	9



WHANGĀREI CENTRAL



TE RAKI
 Region-wide Māori
 constituency
 Two councillors

FAR NORTH
 One councillor

**BAY OF ISLANDS -
 WHANGAROA**
 One councillor

MID NORTH
 One councillor

**COASTAL
 CENTRAL**
 One councillor

**WHANGĀREI
 CENTRAL**
 One councillor

KAIPARA
 One councillor

**COASTAL
 SOUTH**
 One councillor

**General constituencies
 and electoral population**

- Far North - 21,500
- Coastal Central - 20,800
- Coastal South - 21,000
- Kaipara - 19,900
- Mid North - 20,300
- Whangārei Central - 22,300
- Bay of Islands - Whangaroa - 21,100

Total General Electoral Population 146,900 (June 2020 Estimate)
 Optimal Population for Seven Seats = 20,985 (-10% 18,886 + 10% 23,083)

**Māori constituency
 and electoral population**

- Te Raki - 47,610

Māori constituencies

Ngā Rohe Pōti Māori Ā-Kaunihera

Northland region will have one Māori constituency, Te Raki, for the 2022 Local Government Elections, with two Māori constituency councillors elected region-wide.

If you're of Māori descent, you can vote for Māori constituency candidates by enrolling on the Māori roll. If you enrol on the Māori roll, you can only vote for Māori constituency candidates.

A candidate standing for election in a Māori constituency does not have to be of Māori descent or on the Māori

roll. To be eligible to stand for election in a Māori constituency, you must be a New Zealand citizen (by birth or citizenship ceremony) and your name must be on the New Zealand parliamentary electoral roll anywhere in New Zealand. You'll need to be nominated by two people whose names appear on the Māori roll within the Northland Te Raki Māori Constituency.

All councillors whether elected from general or Māori constituencies, represent the entire Northland region.





Electoral system

Te Pūnaha Pōti

Northland Regional Council uses the First Past the Post (FPP) electoral system for its elections. When you vote in a FPP election, you tick the name of the candidate(s) you most prefer, up to the number of vacancies. When the votes are counted, the candidate(s) with the most votes are elected.

Electoral Officer

Te Kaiwhakahaere Pōti Mātua

Northland Regional Council appoints an independent Electoral Officer to conduct the local election on its behalf.

Electoral Officers are responsible for all matters relating to the local election. The Electoral Officer's duties include receiving nominations, counting votes and declaring the results.

Key dates - Ngā Rā Mātua

STANDING FOR ELECTION
KIA TŪ MŌ TE PŌTITANGA

NOW

ENROLLING TO VOTE
RĒHITATIA KI TE PŌTI

NOMINATIONS OPEN
FRIDAY 15 JULY 2022

NOMINATIONS PERIOD



Candidates nominated and sent through to Electoral Officer.

ENROLMENT PERIOD



Enrol to vote or update your enrolment details (if needed) anytime until 12 AUGUST 2022.

NOMINATIONS CLOSE 12 NOON
FRIDAY 12 AUGUST 2022

VOTING PAPERS SENT
FRIDAY 16 SEPTEMBER 2022

VOTING PERIOD



Voting packs sent out and completed votes returned to Electoral Officer or dropped off at council's Water Street Office only.

PRELIMINARY RESULTS AVAILABLE - By Noon
SUNDAY 9 OCTOBER 2022

ELECTION DAY
Voting closes at 12 noon
SATURDAY 8 OCTOBER 2022

DECLARATION OF RESULTS
The Electoral Officer publicly notifies the results.
THURSDAY 13 OCTOBER 2022

END

Enrolling to vote

Rēhitatia ki te pōti



You're eligible to enrol and vote if you are 18 years or older, a New Zealand citizen or permanent resident, and you've lived in New Zealand continuously for 12 months or more at some time in your life.

Enrolling to vote for the first time

Rēhitatia ki te pōti mō te wā tuatahi

If you're voting in an election for the first time, you must enrol to vote. The Electoral Commission encourages and helps people to enrol to vote in elections. Enrolment forms are available at all post shops, or you can contact the Electoral Commission directly (contact details are provided at the end of this booklet).

If you're already enrolled to vote

Ki te rēhita anō ki te pōti

If you've already registered to vote in a general election, you're automatically enrolled to vote in a local election in the area where you live. You can check or update your enrolment details by contacting the Electoral Commission or checking your enrolment details on their website www.elections.govt.nz

Māori and general rolls

Te rārangi pōti māori me te rārangi pōti whānui

Northland Regional Council has established a Māori constituency for the 2022 local elections. If you're of Māori descent, you can choose between the Māori roll and the general roll when you first enrol to vote. You can only vote for candidates in the constituency you're enrolled in (Māori or general). If you choose the general roll, you'll vote for candidates in a general constituency. If you choose the Māori roll, you'll vote for candidates in a Māori constituency.

It is important to note that if you are of Māori descent and have previously registered to vote in a general electorate, you are enrolled on the general roll and will not be able to vote for candidates standing in a Māori constituency.

Once you're enrolled, you can only change rolls during the Māori Electoral Option, which is usually held every five years. The next Māori Electoral Option is in 2024.

Resident and ratepayer rolls

Te rārangi pōti kainoho me te rārangi pōti kaiutu reiti

For local elections, there are two electoral rolls, a resident roll for resident electors and a ratepayer roll for ratepayer electors. The preliminary electoral roll, containing both the resident roll and ratepayer roll, will be available for public inspection from Friday 15 July 2022 to Friday 12 August 2022. All eligible resident electors and non-resident ratepayer electors who have enrolled by Friday 12 August 2022, will be sent voting papers by post.

Ratepayer roll

Te rārangi pōti kaiutu reiti

If you live outside Northland but you pay rates on a property within the region, you may be eligible to be enrolled on the ratepayer roll. This is by application only and enrolment forms are available from the Northland district councils' websites (being Far North, Whangārei and Kaipara).



**YOU MUST BE
ENROLLED
TO VOTE**

**BY FRIDAY
12 AUGUST
2022**

Standing for election

Kia tū mō te pōtitanga



Nominations will open on Friday 15 July 2022 and close at noon on Friday 12 August 2022.

To be eligible to stand for election, a candidate must be:

- » a New Zealand citizen (by birth or citizenship ceremony); and
- » enrolled as a parliamentary elector (anywhere in New Zealand); and
- » nominated by two electors whose names appear on the electoral roll within the constituency where the candidate is standing for election.

It doesn't matter where you live or what qualifications you have – all you need is a desire to serve your region.

There are a few important notes for candidates for the Northland Regional Council:

- » a candidate may not stand for both the Northland Regional Council and a District Council in Northland (being Far North, Whangārei and Kaipara).
- » a candidate may stand for one constituency only
- » a candidate for councillor (or their spouse) cannot be concerned or interested in contracts worth over \$25,000 with the Northland Regional Council.

We'll be holding future councillor information hui before nominations open, for those interested in standing for election. Keep an eye on our website www.nrc.govt.nz/elections for more information for candidates, including dates and times for future councillor information hui.

Voting

Te Pōti



Our local elections will be conducted by postal vote from Friday 16 September 2022 to Saturday 8 October 2022. Voting packs will be posted to everyone who has enrolled by Friday 16 September 2022.

Once you've received your voting papers, it's up to you to complete your vote, seal it in the pre-paid envelope and post or deliver it to the Electoral Officer. If you would like to deliver it in person, there will be ballot boxes at:

- » Far North District Council, Memorial Avenue, Kaikohe
- » Kaipara District Council, 42 Hokianga Road, Dargaville
- » Whangarei District Council, Forum North, Rust Avenue, Whangārei.

REMEMBER!

If you are posting your vote, you must do this **BEFORE** Tuesday 4 October 2022 to ensure it is received in time!

Special votes

He pōti mōtuhake

Special votes are available to those who:

- » have not received their voting pack during the voting period;
- » do not appear on the final electoral roll but qualify to vote;
- » have spoiled or damaged their voting paper.

Special votes are available from Friday 16 September 2022 to noon, Sunday 8 October 2022 from the district council offices (listed above) or by phoning the Electoral Office on 0800 922 822.

Counting of votes and declaration of results

Te tātau o ngā pōti me te whakapuakitanga o Ngā otinga

Votes are counted by the Electoral Officer from noon Saturday 8 October 2022, and when all votes have been counted and validated, the result is declared.



After the results are in

Kua tae mai ngā otinga

Councillor swearing in ceremonies and induction

After the results have been publicly notified, the new council will meet for the first time to be sworn in and to elect the Chair of council. All councillors will then undergo an induction process to ensure they have all the knowledge needed to represent Te Taitokerau on council.



Contact details

Ngā taipitopito whakapā

Electoral Officer,
Dale Ofsoske, Election Services
Level 2A 198 Federal Street,
Auckland 1010
PO Box 5135, Victoria Street West,
Auckland 1142
P 09 973 5212
E info@electionservices.co.nz

Governance Specialist
Chris Taylor,
Northland Regional Council
P 09 470 1224
E elections@nrc.govt.nz
W nrc.govt.nz/election

Electoral Commission

22A Rathbone Street, Whangārei - **P** 0800 36 76 56, **W** elections.govt.nz



Northland
REGIONAL COUNCIL 
Te Kaunihera ā rohe o Te Taitokerau