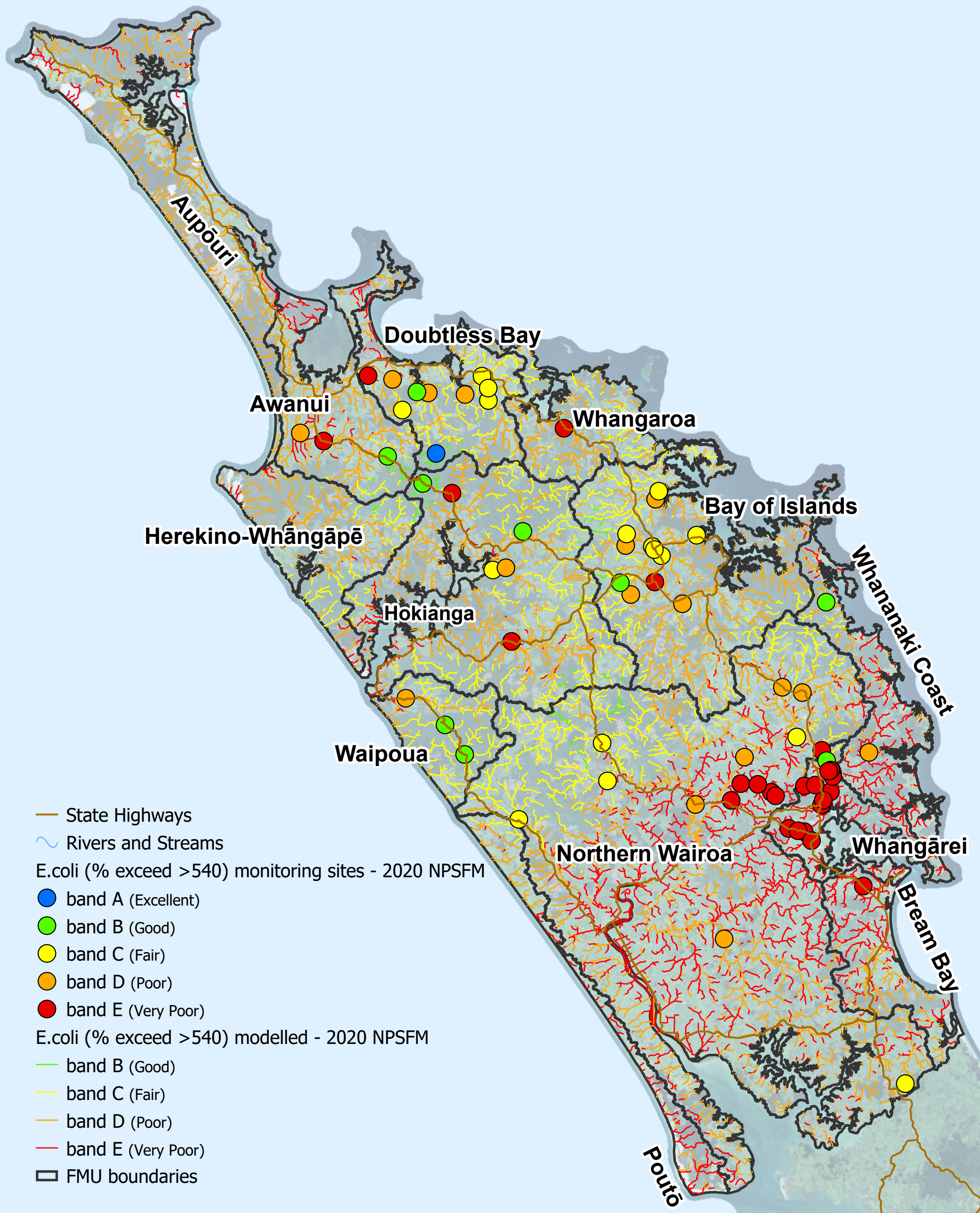




Northland river water quality baseline state (2015 - 2019) (*E.coli* - % exceedance > 540/100 ml)



— State Highways

~ Rivers and Streams

E.coli (% exceed >540) monitoring sites - 2020 NPSFM

● band A (Excellent)

● band B (Good)

● band C (Fair)

● band D (Poor)

● band E (Very Poor)

E.coli (% exceed >540) modelled - 2020 NPSFM

— band B (Good)

— band C (Fair)

— band D (Poor)

— band E (Very Poor)

□ FMU boundaries