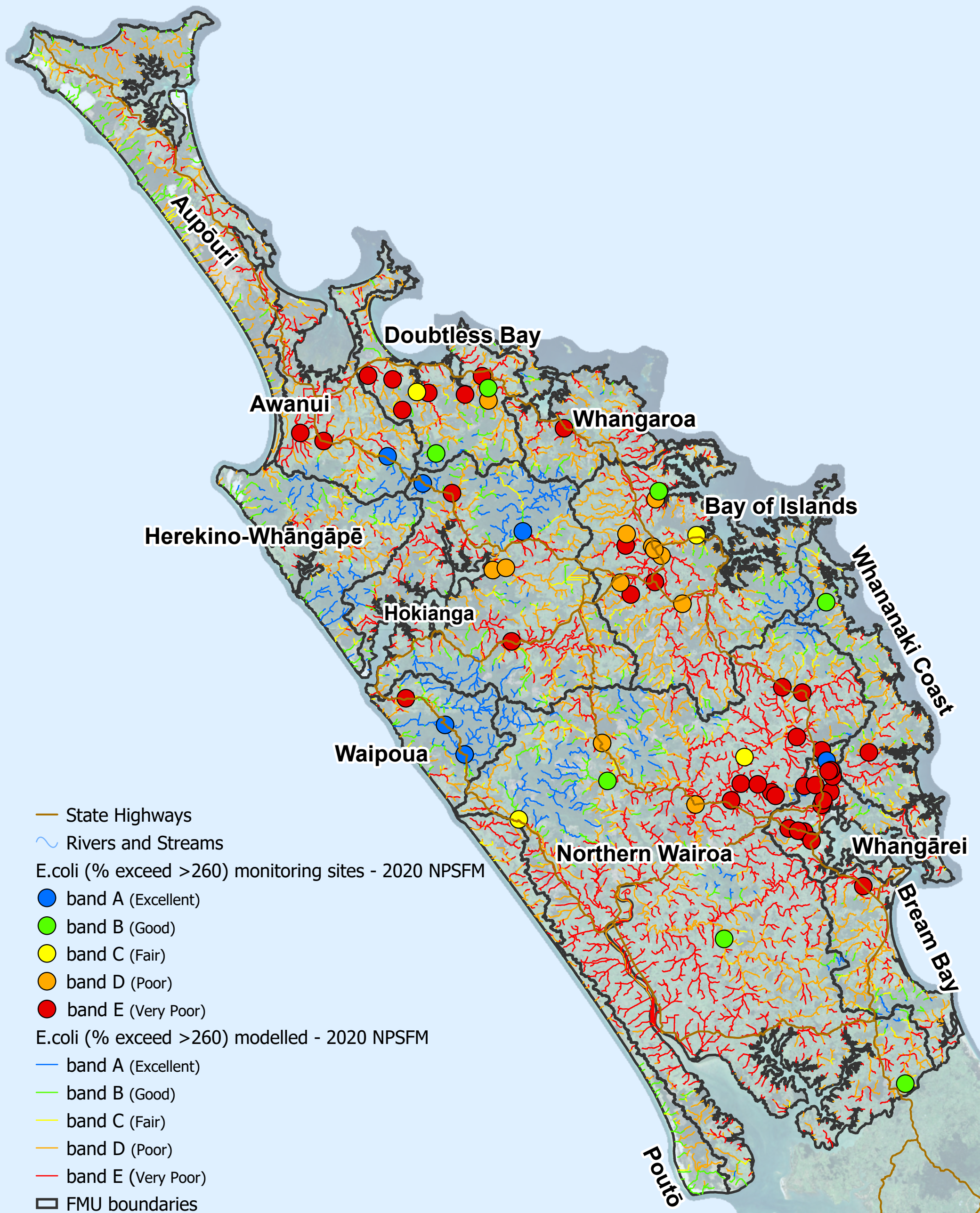




# Northland river water quality baseline state (2015 - 2019) (*E.coli* - % exceedance > 260/100 ml)



— State Highways

— Rivers and Streams

*E.coli* (% exceed >260) monitoring sites - 2020 NPSFM

● band A (Excellent)

● band B (Good)

● band C (Fair)

● band D (Poor)

● band E (Very Poor)

*E.coli* (% exceed >260) modelled - 2020 NPSFM

— band A (Excellent)

— band B (Good)

— band C (Fair)

— band D (Poor)

— band E (Very Poor)

□ FMU boundaries