

Kawakawa

NORTHLAND

Community Response Plan



contents...



Key Hazards	3
Cyclones	3
Flooding	3
Tsunami	4
Pandemic.....	4

Household Emergency Plan	5
---------------------------------------	----------

Emergency Survival Kit	6
Getaway Kit.....	6
Stay in touch.....	6

Tsunami Warning Systems.....	7
-------------------------------------	----------

Plan Area Map	8
----------------------------	----------

Township Map	9
---------------------------	----------

Floods	10
Before, during and after	10

Cyclones	11
Before and during	11
After a storm, tornadoes and landslides.....	12

Fire	13
Before and during	13
After a fire, Fire seasons	14

Civil Defence Community Centres	15
--	-----------

Plan activation process	15
--------------------------------------	-----------

Roles and responsibilities	15
---	-----------

Emergency Contacts	16
---------------------------------	-----------

For further information	17
--------------------------------------	-----------



The key hazards in Kawakawa

- Cyclones
- Flooding
- Tsunami
- Influenza Pandemic



Cyclones

Major storms affect wide areas and can be accompanied by strong winds, heavy rain, thunder, lightning, tornadoes and rough seas. They can cause damage to property and infrastructure, affect crops and livestock, disrupt essential services, and cause coastal inundation.

Severe weather watches and warnings are issued by the MetService and available through the broadcast media, by email alerts, and online at www.metservice.co.nz



Flooding

Floods can cause injury and loss of life, damage to property and infrastructure, loss of stock, and contamination of water and land.



Floods are usually caused by continuous heavy rain or thunderstorms but can also result from tsunamis and coastal storm inundation. A flood becomes dangerous if:

- the water is very deep or travelling very fast
- the floods have risen very quickly
- the floodwater contains debris, such as trees and sheets of corrugated iron.

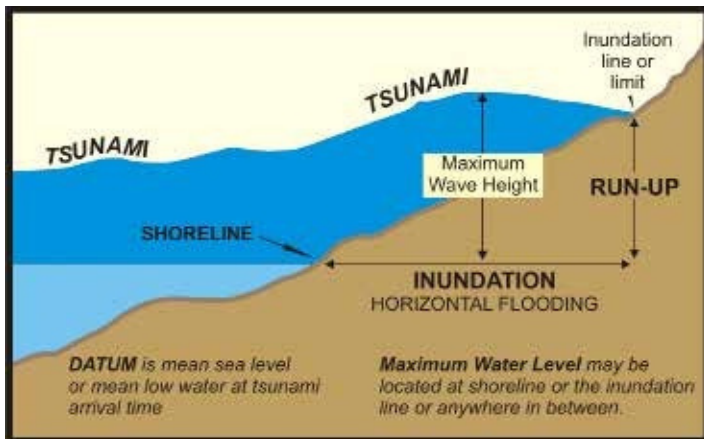
Getting ready before a flood strikes will help reduce damage to your home and business and help you survive.



Tsunami

New Zealand's entire coast is at risk of tsunami. A tsunami can violently flood coastlines, causing devastating property damage, injuries and loss of life.

A tsunami is a natural phenomenon consisting of a series of waves generated when a large volume of water in the sea, or in a lake, is rapidly displaced. A tsunami can be caused by large submarine or coastal earthquakes; underwater landslides which may be triggered by an earthquake or volcanic activity; large coastal cliff or lakeside landslides; or volcanic eruptions beneath or near the sea.



Know the natural warning signs

If you are at the coast and experience any of the following, move immediately to the nearest high ground, or as far inland as you can:

- Feel a strong earthquake that makes it hard to stand up, or a weak rolling earthquake that lasts a minute or more;
- See a sudden rise or fall in sea level; or
- Hear loud and unusual noises from the sea

Be Safe!

Know your tsunami evacuation zones



Influenza Pandemic

An influenza virus capable of causing a pandemic is one that people have no immunity to, that can easily spread from person to person, and that is capable of causing severe disease. We all need to be prepared for a pandemic in order to help prevent spread and look after ourselves as best we can.

Here are a few simple things you can do now to prepare for a pandemic:

- Cover your coughs and sneezes - Araia tōu waha me tōu ihu kit e papa muku ina maremare koe, ina tihe rānei.
- Wash and dry your hands - Kia rite te horoi me te whakamaroke i ōu ringa, ina koa i muri o te maremare, o te tihe – horoia me te hopi
- Keep away from others and stay home if you become unwell
- Regularly disinfect common surfaces like phones, handles, taps, toys etc
- Put together an emergency plan and kit
- Keep paracetamol and ibuprofen handy for reducing fever and aches and pains.

get ready...



CREATE AND PRACTICE Household Emergency Plan

YOUR HOUSEHOLD

Address

Name

Phone numbers

Name

Phone numbers

Name

Phone numbers

Name

Phone numbers

Name

Phone numbers

1. If we can't get home or contact each other we will meet or leave a message at:

Name

Contact details

Name (back-up)

Contact details

Name (out of town)

Contact details

2. The person responsible for collecting the children from school is:

Name

Contact details

3. Emergency Survival Items and Getaway Kit Person responsible for checking water and food

Items will be checked and replenished on:

(check and replenish at least once a year)

The Getaway Kits are stored in the

4. The radio station (inc AM/FM frequency) we will tune in to for local civil defence information during an emergency

5. Friends/neighbours who may need our help or who can help us

Name

Address

Phone

Name

Address

Phone

6. On a separate sheet of paper draw a plan of the house showing places to shelter in an earthquake or storm, exits and safe assembly areas and where to turn off water, electricity and gas.

IMPORTANT PHONE NUMBERS

For Police, Fire or Ambulance call 111

Local Police station

Water Supplier

Medical Centre

Gas Supplier

Insurance Company

Electrician

Vet/Kennel/Cattery

Plumber

Electricity Supplier

Builder

Council Emergency Helpline



CREATE

Emergency Survival Kit

In most emergencies you should be able to stay in your home. Plan to be able to look after yourself and your household for at least three days or more. Assemble and maintain your emergency survival items for your home as well as a portable getaway kit in case you have to leave in a hurry. You should also have essential emergency items in your workplace and in your car.

Emergency Survival Items

- | | |
|--|--|
| <input type="checkbox"/> Torch with spare batteries or a self-charging torch | <input type="checkbox"/> Toilet paper and large rubbish bags for your emergency toilet |
| <input type="checkbox"/> Radio with spare batteries | <input type="checkbox"/> Face and dust masks |
| <input type="checkbox"/> Wind and waterproof clothing, sun hats and strong outdoor shoes | |
| <input type="checkbox"/> First aid kit and essential medicines | |
| <input type="checkbox"/> Blankets or sleeping bags | |
| <input type="checkbox"/> Pet supplies | |



Getaway Kit

Everyone should have a packed getaway kit in an easily accessible place at home and at work which includes:

- Torch and radio with spare batteries
- Any special needs such as hearing aids and spare batteries, glasses or mobility aids
- Emergency water and easy-to-carry food rations such as energy bars and dried foods
- First aid kit and essential medicines
- Essential items for infants or young children such as formula and food, nappies and a favourite toy
- Change of clothes (wind/waterproof clothing and strong outdoor shoes)
- Toiletries – towel, soap, toothbrush, sanitary items, toilet paper
- Blankets or sleeping bags
- Face and dust masks
- Pet supplies
- Power bank and phone charger

HOW TO Stay informed

RADIO STATIONS

Newstalk ZB

1026AM & 1215AM

Classic Hits

96.4FM - Far & Mid North

106.1FM - Bay of Islands

More FM

91.6FM - Whangarei

92.0FM - Bay of Islands

Radio Live

100.7FM

National Radio

981AM, 101.5FM - Kaikohe

Alerts to your smartphone

Two alerting platforms are used by Northland Civil Defence (and other official agencies) to send alerts about severe weather, tsunami or other emergencies.



The Red Cross Hazard App



Emergency Mobile Alerts (EMAs)

Both options are free to users although smartphones need to be of certain capability to be able to receive them.

We recommend that if possible, people take advantage of both.

To find out more, visit:
www.nrc.govt.nz/cdalert

WEBSITES

Log on to one of the following websites for more information

www.nrc.govt.nz/civildefence

www.facebook.com/civildefencenorthland

www.geonet.org.nz/tsunami

www.ngdc.noaa.gov/hazard

www.metservice.com

www.prh.gov.ptwc/



Warning systems - if visiting coastal areas

Tsunami warnings

Warning messages and signals about a possible tsunami can come from several sources – natural, official or unofficial.

Natural warnings

For a local source tsunami which could arrive in minutes, there won't be time for an official warning. It is important to recognise the natural warning signs act quickly.

Official warnings

Official warnings are only possible for distant and regional source tsunami. Official warnings are given by the Ministry of Civil Defence & Emergency Management to the national media, local authorities and other key response agencies. Your local council may also issue warnings through local media and other local arrangements.

Unofficial or informal warnings

You may receive warnings from friends, other members of the public, international media and from the internet. Verify the warning only if you can do so quickly. If official warnings are available, trust their message over informal warnings.

For further information

Turn on a radio, television or computer and search for information on council websites and social media sites (Facebook and Twitter). You can also go straight to Civil Defence Northland Facebook page www.facebook.com/civildefencenorthland or also www.nrc.govt.nz/civildefence

If you don't have access to any of these, contact someone you think may have.

Follow instructions given by the media and spread the word to people you think may be at risk.

Telephone tree

A phone tree is a network of people organized in such a way that they can quickly and easily spread information amongst each other. Telephone Trees can be used to inform the community in the event of a Civil Defence emergency response and be based on a street, neighbourhood, social group, family or whanau structure



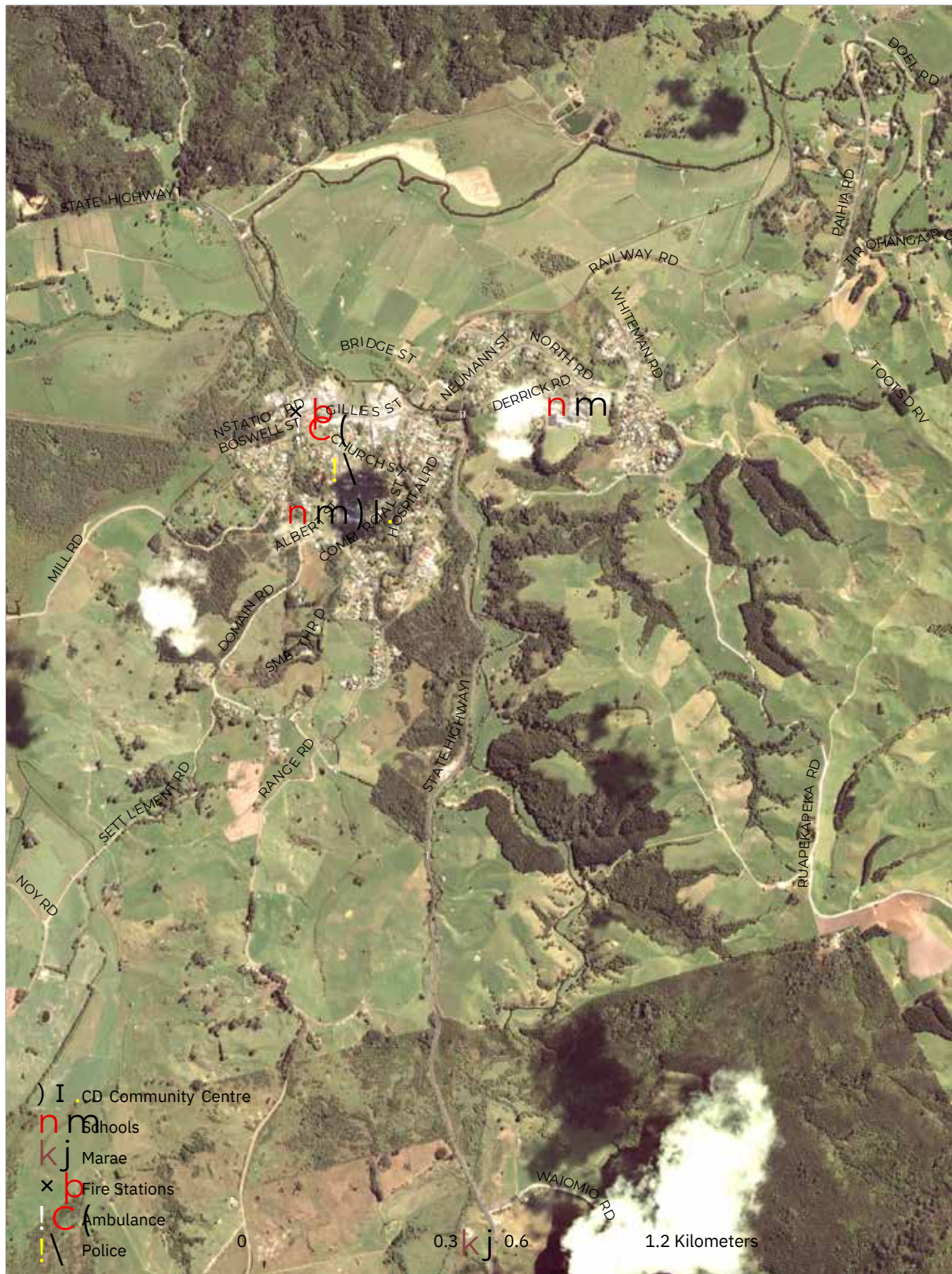
Evacuation methods

Civil Defence warnings to this area will be by the following methods.

- Warnings via radio
- P.A. systems on emergency service vehicles
- Local procedures. e.g. phone trees



Plan Area



Kawakawa Overview Map



Date Saved: 17/0



Township



Kawakawa Area Map



Northland Regional Council

Copyright 2015, Northland Regional Council

Projection NZTM, Datum NZTM2000.

DISCLAIMER:

The Northland Regional Council cannot guarantee that the information shown is accurate and should not be reused in any manner without proper consultation with its owner.

W:\GIS Projects\Operations\CivilDefence\Community Response Plans\mxd\2015_CD_CommunityResponseMapbook.mxd

9



Floods

BEFORE A FLOOD

- Find out from your local council if your home or business is at risk from flooding. Ask about evacuation plans and local public alerting systems; how you can reduce the risk of future flooding to your home or business; and what to do with your pets and livestock if you have to evacuate.
- Know where the closest high ground is and how to get there.
Develop a Household Emergency Plan. Assemble and maintain your Emergency Survival Items for your home as well as a portable getaway kit. See page 5 for details.
- Check your insurance policy to ensure you have sufficient cover.

AFTER A FLOOD

- It may not be safe to return home even when the floodwaters have receded. Continue to listen to your local radio station for civil defence instructions.
- Help others if you can, especially people who may require special assistance.
Throw away food including canned goods and water that has been contaminated by floodwater.
Avoid drinking or preparing food with tap water until you are certain it is not contaminated. If in doubt, check with your local council or public health authority.
- Look for and report broken utility lines to appropriate authorities.
- If your property is damaged, take notes and photographs for insurance purposes. If you rent your property, contact your landlord and your contents insurance company as soon as possible.

DURING A FLOOD OR IF A FLOOD IS IMMINENT

- Listen to your local radio stations as emergency management officials will be broadcasting the most appropriate advice for your community and situation.
- If you have a disability or need support, make contact with your support network.
Put your household emergency plan into action and
- check your getaway kit. Be prepared to evacuate quickly if it becomes necessary.
Where possible, move pets inside or to a safe place,
- and move stock to higher ground.
Consider using sandbags to keep water away from
- your home.
Lift valuable household items and chemicals as high above the floor as possible.
- Fill bathtubs, sinks and storage containers with clean water in case water becomes contaminated.
- Turn off utilities if told to do so by authorities as it can help prevent damage to your home or
- community. Unplug small appliances to avoid damage from power surges.
Do not attempt to drive or walk through floodwaters unless it is absolutely essential.
-



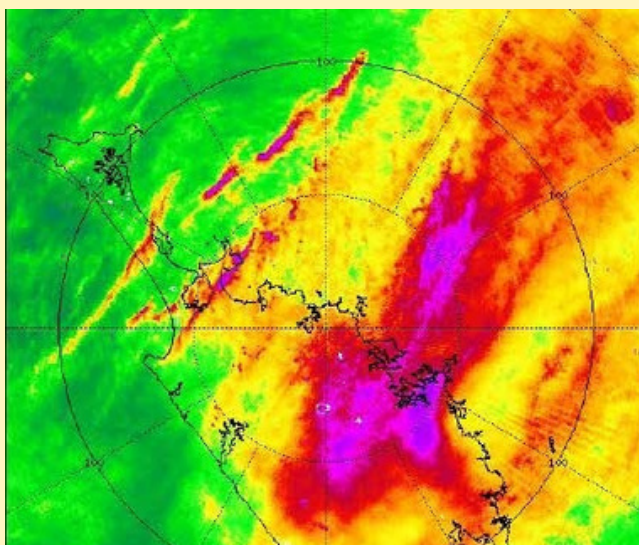


Cyclones

BEFORE A STORM

- Develop a Household Emergency Plan. Assemble and maintain your Emergency Survival Items for your home as well as a portable getaway kit.
- Prepare your property for high winds. Secure large heavy objects or remove any item which can become a deadly or damaging missile. Get your roof checked regularly to make sure it is secure. List items that may need to be secured or moved indoors when strong winds are forecast.
- Keep materials at hand for repairing windows, such as tarpaulins, boards and duct tape.
- If you are renovating or building, make sure all work complies with the New Zealand building code which has specific standards to minimise storm damage.
- If farming, know which paddocks are safe to move livestock away from floodwaters, landslides and power lines.

WHEN A WARNING IS ISSUED AND DURING A STORM



- Close windows, external and internal doors. Pull curtains and drapes over unprotected glass areas to prevent injury from shattered or flying glass.
- If the wind becomes destructive, stay away from doors and windows and shelter further inside the house.
- Water supplies can be affected so it is a good idea to store drinking water in containers and fill bathtubs and sinks with water.
- Don't walk around outside and avoid driving unless absolutely necessary.
- Power cuts are possible in severe weather. Unplug small appliances which may be affected by electrical power surges. If power is lost unplug major appliances to reduce the power surge and possible damage when power is restored.
- For weather updates and instructions, listen to your local radio stations.
- Put your household emergency plan into action and check your getaway kit in case you have to leave in a hurry.
- Secure, or move indoors, all items that could get blown about and cause harm in strong winds.





AFTER A STORM

- Continue to listen to your local radio stations for up to date information.
- Check for injuries and help others if you can, especially people who require special assistance.
- Look for and report broken utility lines to appropriate authorities.
- Contact your local council if your house or building has been severely damaged.
- If your property or contents are damaged take notes and photographs and contact your insurance company. Inform your landlord if there is damage to the rental property.
- Ask your council for advice on how to clean up debris safely.

Tornadoes

Tornadoes sometimes occur during thunderstorms in some parts of New Zealand. A tornado is a narrow, violently rotating column of air extending downwards to the ground from the base of a thunderstorm. Warning signs include a long, continuous roar or rumble or a fast approaching cloud of debris which can sometimes be funnel shaped.

- Alert others if you can.
- Take shelter immediately. A basement offers the greatest safety. If underground shelter is not available, move to an interior room without windows on the lowest floor. Get under sturdy furniture and cover yourself with a mattress or blanket.
- If caught outside, get away from trees if you can. Lie down flat in a nearby gully, ditch or low spot and protect your head.
- If in a car, get out immediately and look for a safe place to shelter. Do not try to outrun a tornado or get under the vehicle for shelter.

LANDSLIDES Warning signs

- Small slips, rock falls and subsidence at the bottom of slopes.
- Sticking doors and window frames.
- Gaps where frames are not fitting properly.
- Outside fixtures such as steps, decks, and verandahs moving or tilting away from the rest of the house.
- New cracks or bulges on the ground, road, footpath, retaining walls and other hard surfaces.
- Tilting trees, retaining walls or fences.



AHI / FIRE

If a fire starts in a rural environment, it may not be detected as quickly, and emergency services are likely to take longer to respond because of greater travel distances.

Most Te Tai Tokerau vegetation fires start from escaped rubbish fires.

For information on fire danger, fire season status and requirements for fire permits visit www.checkitsalright.nz

BEFORE A FIRE

To protect your rural property from fire, we recommend:

- Installing smoke alarms and testing them regularly.
- Designing an escape plan and practicing it
www.escapeplanner.co.nz
- Having two exit points from every room in your home, and a safe designated meeting place outside.
- Keeping the grass green and mown or grazed around your home.
- Creating a safety zone around your home of at least 10m by clearing any dead or dry material and replacing flammable plants and trees with low flammable species.
- Making sure your property is clearly signposted with your RAPID rural property identification number.



- Installing multipurpose dry powder extinguishers in your house and out buildings.
- Keeping a garden hose connected and make sure it is long enough to reach around the house.
- Ensuring your driveway has a minimum clearance of 4m wide and 4m high and adequate turning space for large vehicles.
- Easy access to water supplies and making sure they are sign-posted.
- Storing firewood and other flammable material away from your house.
- Safe handling and storage of gas or liquid fuels.
- Maintaining machinery and equipment in working order.
- Disposing of ash safely in a metal container and using approved incinerators.

DURING A FIRE

- Crawl low and fast to escape smoke. 'Get Down, Get Low, Get Out.'
- Shut doors behind you to slow the spread of fire.
- Meet at the planned meeting place.
- Once out, stay out - never go back inside.
- phone Fire and Emergency on 111 from a safe phone.

Tell Fire and Emergency:

- House number
- Street name
- Nearest intersection
- Suburb and city
- Rural ID number if you have one





AFTER A FIRE

Nothing can really prepare you for the impact of a fire or other emergency on your family and property. Even a small fire or flood can make you feel helpless and unsure of what to do next. This is entirely understandable. Fire and Emergency NZ regularly sees home owners faced with the same distressing situation. Here's some guidance on the important things you need to do now that the unimaginable has happened.

Do not enter your damaged house unless you have to and have been advised it is safe to do so. Fire and Emergency NZ will check the water, electricity and gas supplies and either arrange to have them disconnected or advise you what action to take.

If you can't enter your home, you'll need to arrange accommodation. You may need to stay with family, friends or in a motel for at least one night, and longer if the house has been seriously damaged.

When your house is safe and you are allowed back:

- Try to find your identification, insurance information, medication information, eye glasses, hearing aid, wallet and valuables.
- If the house is too badly damaged to live in, board up openings to discourage trespassers.
- You may need to arrange security patrols to protect it from burglary.
- Keep receipts for expenses resulting from the fire, such as accommodation or clothes.
- Get supplies of medicine or eye glasses.

Have you considered installing sprinklers?

Home sprinklers will protect your family, home, and contents from the threat of fire - 24 hours a day.

Sprinkler technology has come a long way in a short space of time. The cost of including home sprinklers into a new house or adding them as part of major renovations is probably a lot cheaper than you think.

Home sprinklers use the same domestic plumbing as your kitchen taps and can be installed by a qualified plumber in less than two days.

More importantly though, sprinklers provide the fastest possible means of extinguishing fires in rural homes.

For more information, visit www.fireandemergency.nz

Fire seasons

Open fire season - a fire permit is not required to light a fire in the open air.

Restricted fire season - in this season a fire permit from Fire and Emergency is required before you can light a fire in the open air.

Prohibited fire season - this means a total fire ban is in place. Lighting fires in the open air is not permitted.

For the current fire season and to apply for fire permits, contact Fire and Emergency NZ on 09 486 7948 or visit checkitsalright.co.nz



Plan activation process

These instructions are for members of the Kawakawa community response group for initiating their pre-planned roles.

DO THIS

- Stakeholder Group to liaise to determine what actions should be taken.
- Consider who will be affected and where.
- Activate community warning systems i.e. phone tree, door to door contact.
- Consider the establishment of Civil Defence Community Centres
- Notify the Emergency Operations Centre (EOC) of what actions have been taken by phoning the Far North District Council 0800 920 029.

Civil Defence Community Centres

The location of Civil Defence Community Centres will depend on the type of emergency and the area impacted, and may need to change depending on access and safety during flood events.

Roles and responsibilities

The role and responsibilities of the emergency services is clearly defined by legislation. In the event of this plan being activated due to an emergency event occurring, the roles and responsibilities of community groups are set out as below.

CIVIL DEFENCE RESPONSE GROUP

Liaise with civil defence and emergency services to initiate and assist in a response to a civil emergency, disseminate warnings and identify and make arrangements for welfare centres if required.

FIRE SERVICE

Fire-fighting responsibilities
Containment of releases and spillages of hazardous substances
Urban search and rescue
Limitation of damage
Redistribution of water for specific needs

POLICE

Maintain law and order
Protect life and property
Assisting the coroner
Co-coordinating movement control
Search and rescue

ST JOHN AMBULANCE

Provision of emergency medical care



Emergency contact information

Do not call 111 for information and advice. Calling 111 unnecessarily may put others who are in a genuine emergency situation at risk.



Dial 111

(Emergencies Only)

www.police.govt.nz



Dial 111 (Emergencies Only)

www.fireandemergency.nz

www.checkitsalright.nz



Dial 111

(Emergencies Only)

www.stjohn.org.nz



www.metservice.com



0800 002 004

www.nrc.govt.nz



0800 920 029

www.fndc.govt.nz



www.civildefence.govt.nz



www.aaroadwatch.co.nz



0800 867 363

www.topenergy.co.nz



Department of
Conservation
Te Papa Atawhai

0800 362 468

www.doc.govt.nz



For further information:

LOCAL COUNCIL

Kaipara District Council
0800 727 059
www.kaipara.govt.nz

Whangarei District Council
0800 932 463
www.wdc.govt.nz

Far North District Council
0800 920 029
www.fndc.govt.nz

Northland Regional Council
0800 002 004
www.nrc.govt.nz

CIVIL DEFENCE SITES

Northland Civil Defence
www.nrc.govt.nz/civildefence
www.facebook.com/civildefencenorthland

National Emergency Management Agency
www.civildefence.govt.nz

Be prepared
www.whatstheplanstan.govt.nz
www.getthru.govt.nz

EMERGENCY SERVICES

Fire and Emergency
www.fireandemergency.nz

New Zealand Police
www.police.govt.nz

St John Ambulance
www.stjohn.org.nz