

CONDITION OF STRUCTURES

Significant Non-Compliance (= CL6)



More than minor areas of the farm structures appear in disrepair and are becoming or likely to become detached and result in either debris generation and/or give rise to objects that may become potential navigation hazards.

Minor Non-Compliance (= CL3)



Localised minor small areas of farm structures appear in disrepair and are becoming or likely to become detached and result in either debris generation and/or give rise to objects that may become potential navigation hazards and/or excessive cropping likely to cause failure of farm structures.

Full Compliance (= CL1)



All structures associated with the marine farm appear in good condition.

CONDITION OF SEABED

Significant Non-Compliance (CL6)



More than minor sediment and shell accumulation visually apparent under farm structures causing 'windrow' formation of sediment mounds.

Minor Non-Compliance (= CL3)



Minor accumulation of shell material beneath farm structures readily apparent, although no 'windrow' formation of sediment mounds apparent.

Full Compliance (= CL1)



Less than minor accumulation of shell material beneath farm structures and no 'windrow' formation of sediment mounds apparent.

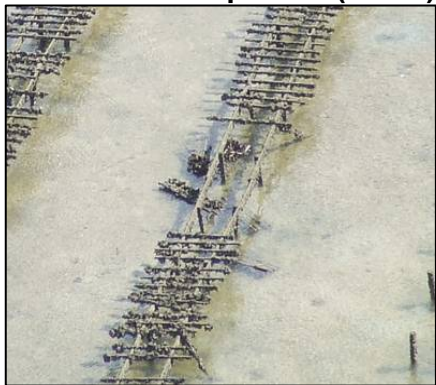
PRESENCE OF DEBRIS

Significant Non-Compliance (CL6)



More than minor amount of debris present and/or potential for debris generation from failed or failure of farm structures or materials associated with farming activities.

Minor Non-Compliance (= CL3)



Minor amount of debris present from failed farm structures or materials associated with farming activities.

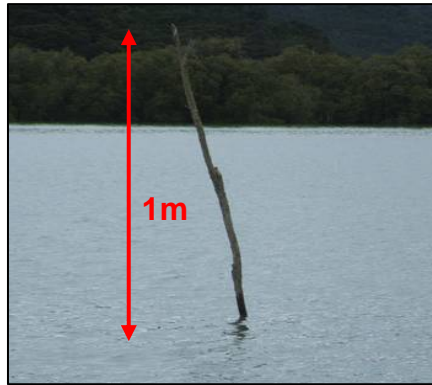
Full Compliance (= CL1)



No debris apparent.

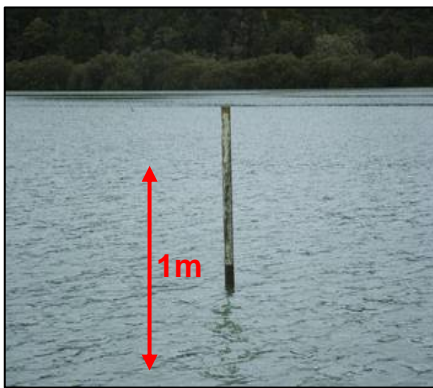
NAVIGATIONAL MARKERS

Significant Non-Compliance (CL6)



Markers absent from one or more location and/or showing less than 1m above MHWS, not showing white, or are not placed at correct spacing, which are likely to cause a navigational hazard to other marine users.

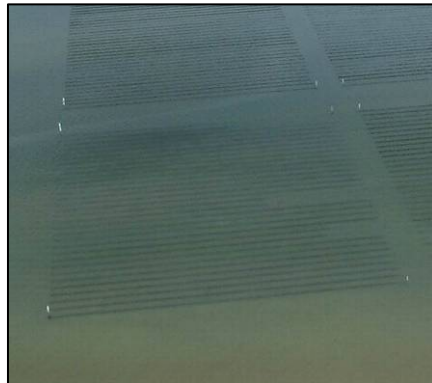
Minor Non Compliance (= CL3)



Markers missing from one or more locations however are not likely to be a navigational hazard to other marine users, or marker suitable however not adequately maintained (i.e. white painting faded).

Full Compliance (= CL1)

Markers present at required locations, showing at least 1m above MHWS and well maintained.



Notes on States of Compliance

A combination of two or more of the CL3 (minor non-compliance) categories will place the marine farm into a state of significant non-compliance (coded CL5).

Other factors (i.e. restrictions on farming method, requirements to leave access routes etc) may also influence states of compliance, and these may influence compliance.