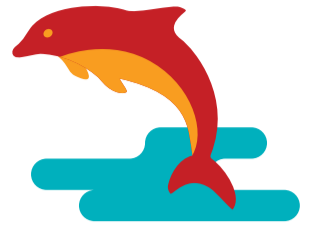


HOKIANGA link



9.00am	Departs Omapere GAS Service Station
9.10am	Departs Hokianga I-Site
9.25am	Departs Rawene Junction. Corner Rawene Rd / SH12
9.30am	Departs Rawene. By prior arrangement only Phone I-Site 09 405 8869 before 9.00am to arrange your pick up
9.45am	Departs Goldfish Corner. Corner Waima Valley Road / SH12
9.55am	Departs Taheke. Corner Taheke Road / SH12
10.05am	Arrives Kaikohe – Mangakahia Rd (opposite Bunnings) near InterCity Shuttle stop. <i>Drop off at The Warehouse and/or Community Link can be made on request.</i>
10.15am	Okaihau (Okaihau Hall)
10.35am	Arrives Kerikeri (Cobham Road Bus Stop)
1.00pm	Departs Kerikeri
1.20pm	Departs Okaihau
1.30pm	Departs Kaikohe – Mangakahia Rd (opposite Bunnings) near InterCity Shuttle stop. <i>Pick up from New World and The Warehouse can be made by prior arrangement.</i>
1.40pm	Departs Taheke. Corner Taheke Road / SH12
1.50pm	Departs Goldfish Corner. Corner Waima Valley Road / SH12
2.05pm	Departs Rawene. By prior arrangement only. Arrangement to be made with driver for Rawene drop off
2.10pm	Departs Rawene Junction. Corner Rawene Road / SH12
2.20pm	Arrives Hokianga I-Site
2.30pm	Arrives Omapere GAS Service Station



FARES

	ONE WAY	RETURN
Omapere to Kaikohe	\$10	\$20
Omapere to Kerikeri	\$15	\$25 return shoppers special
Waima to Kaikohe	\$7.50	\$15
Waima to Kerikeri	\$10	\$20
Kaikohe to Okaihau	\$3	\$6
Okaihau to Kerikeri	\$5	\$10
Kaikohe to Kerikeri	\$8	\$16

BOOKINGS

FOR BOOKINGS

Phone Peter Clark, Hokianga Express Charters on 021 405 872

FOR RAWENE PICK UPS

Phone i-SITE on 09 405 8869 before 9am (The van does **NOT** go to Rawene unless pre-bookings are made).

Seats are limited so bookings are recommended

DAYS OF OPERATION

July to November 2016

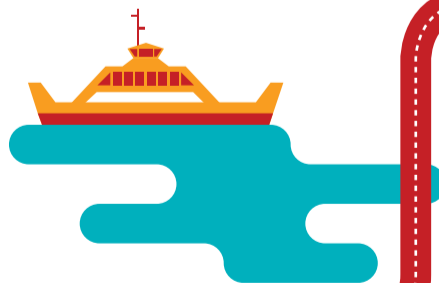
– Thursdays only

December 2016 to March 2017

– Tuesdays and Thursdays

April to June 2017

– Thursdays only



FOR MORE INFORMATION

www.nrc.govt.nz/hokianga