

An aerial photograph of a coastal landscape. The scene features a large, curved sandy beach that separates a shallow, turquoise bay from the deep blue ocean. The land is covered in vibrant green grass and vegetation, with some areas appearing to be a golf course or a park. In the distance, several small, rocky islands are scattered across the water. The overall atmosphere is serene and scenic.

Mimiwhangata

Carmen Hetaraka

Te Uri o Hikihiki

Mark Bellingham

Forest & Bird



- Support for tangata whenuas vision.
- Proven record of success.
- 50,000 members / supporters nationwide.
- 28 full time staff.
- NZ's leading non-governmental conservation organisation.

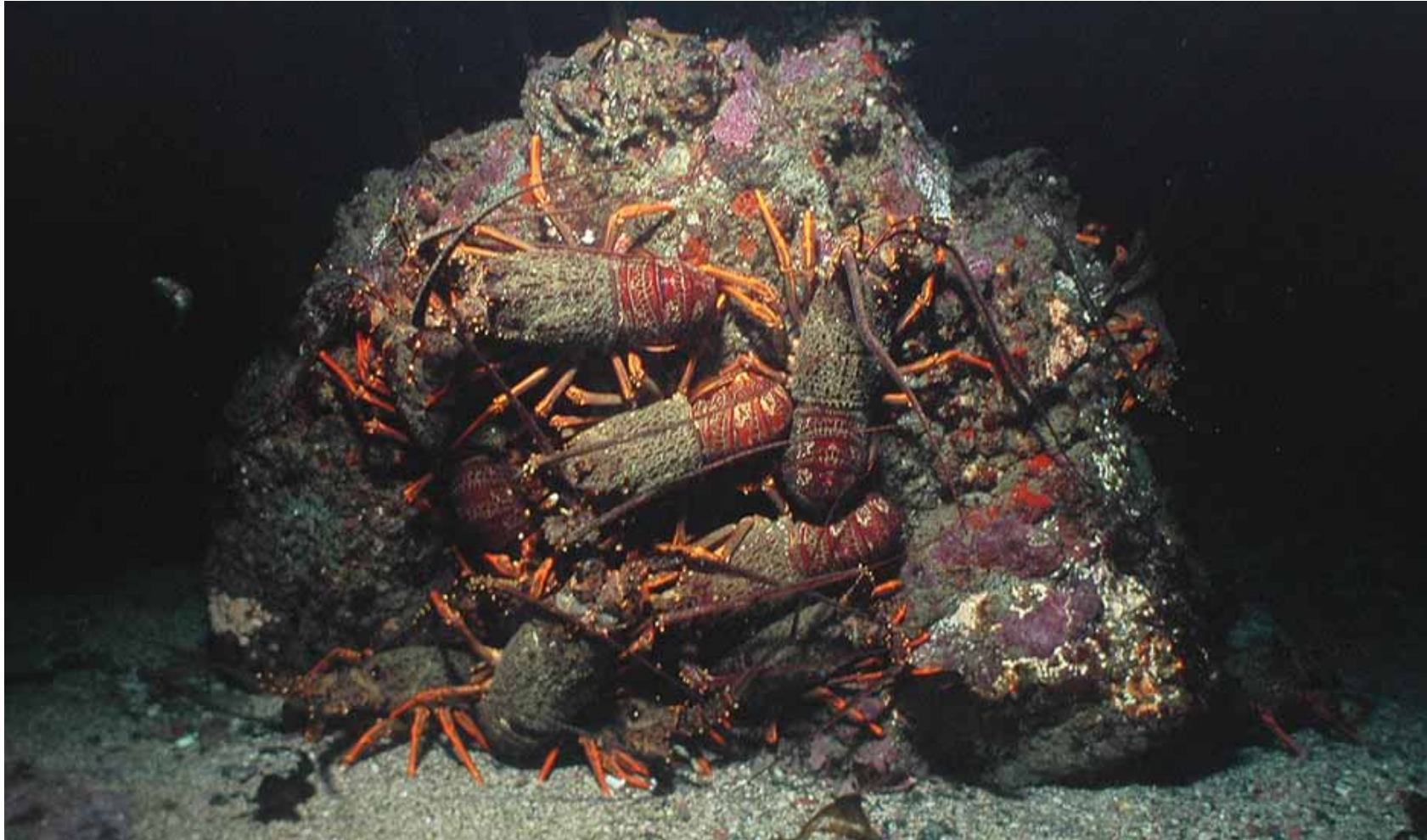
Mimiwhangata marine reserve application

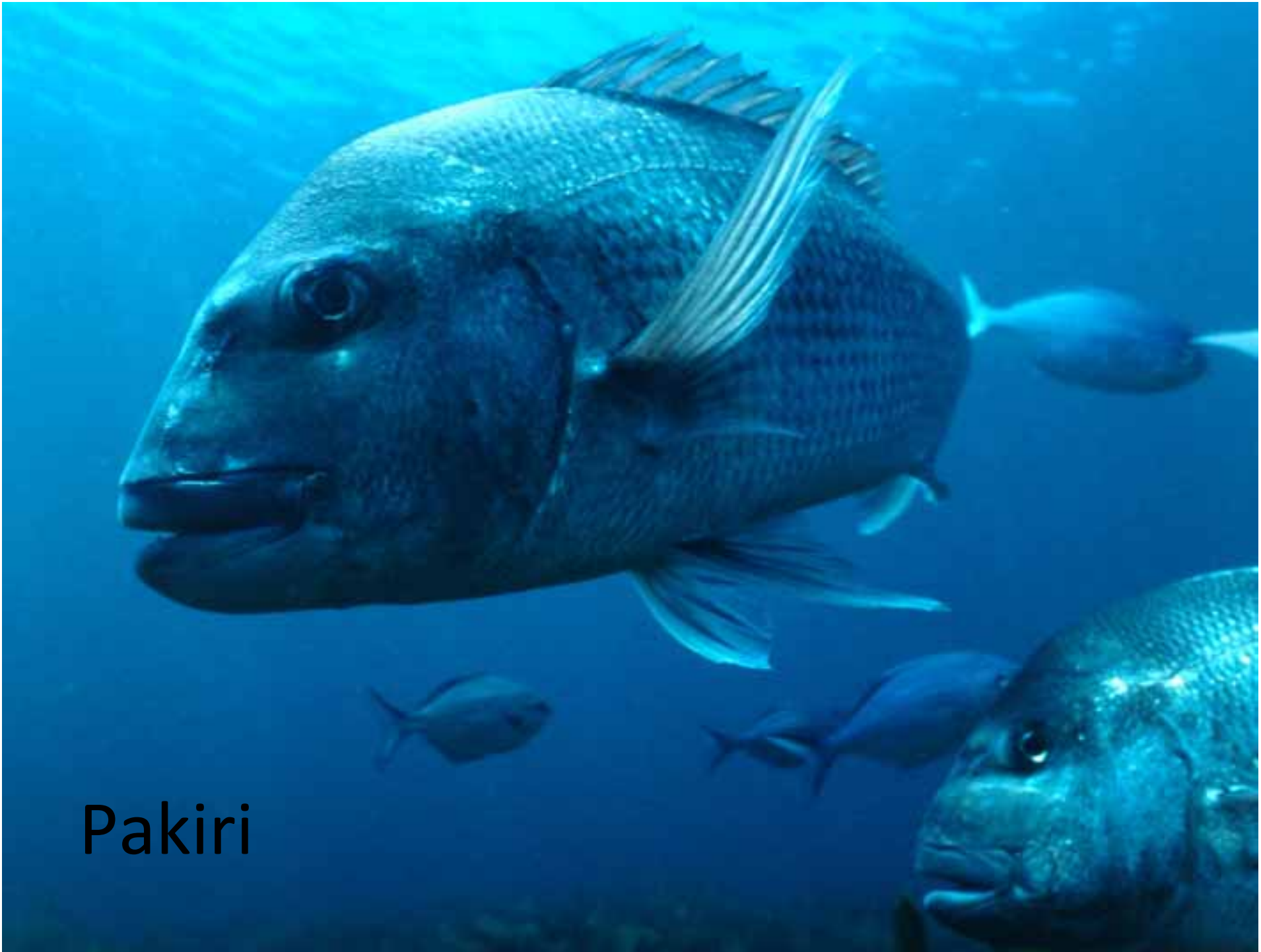
- Joint application between tangata whenua and Forest and Bird.
- Forest and Bird supporting tangata whenua's vision.
- Restoration of Aro Ariki.
- Kaitiakitanga - Protection of the environment.
- Kaitiakitanga - Economic , educational, employment, health, and cultural benefits.
- Management committee and generational review.

Kaitiakitanga – Protection of the environment



A dozen crays out in the open,
Tawharanui Marine Park





Pakiri



Pakiri/Goat Id) Marine Reserve



- Economic analysis of Pakiri marine reserve on Rodney District (2008)
- 375,000 visitors 2007 / 2008 (300,000 in 2002)
- \$18.6 million per annum to Rodney District economy
- 173 fulltime job equivalents incl 10 jobs in marine reserve related activities

Economic benefits

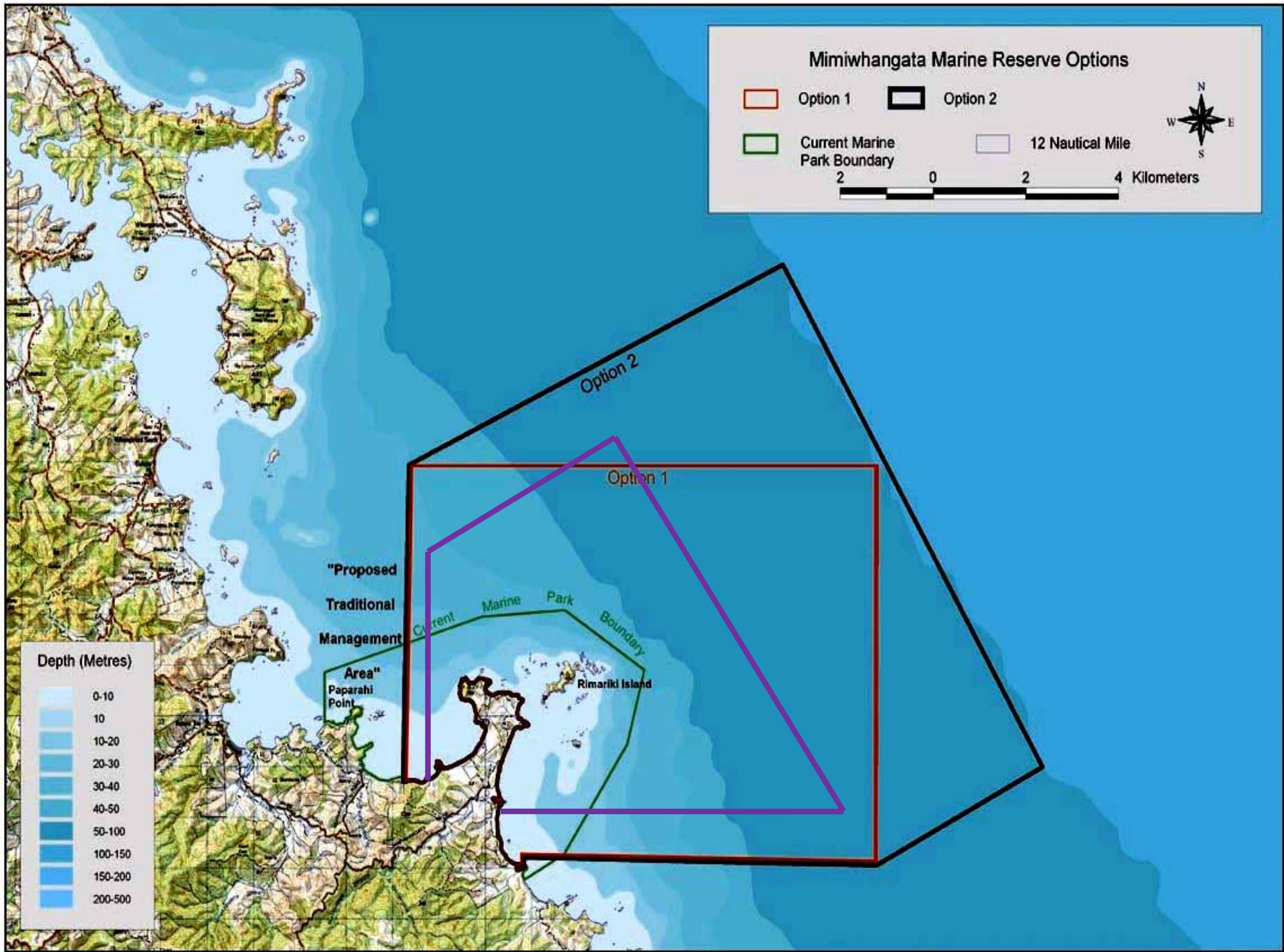
- Employment – traditional management of reserve / compliance.
- Tourism – Nature and cultural experiences / glass bottom boat / snorkelling / diving
- Marae based wananga - Marine Education Centre.
- Research – traditional management / monitoring
- The marine reserve would be a nursery area for kaimoana which move outside the marine reserve

Educational benefits

- Kura Wananga - Marae based wananga , Marine Education Centre , Helena Bay.
- Involvement of primary and secondary schools, e.g. Tikipunga and Kamo High School and Te Kura Kaupapa o Te Rawhitiroa
- Joint ventures, e.g. Northland Polytechnic, Experiencing Marine Reserves.
- Opportunities for Rangatahi, e.g marine biology / ecological research and studies.

Health benefits

- Economic and educational benefits will enhance hauora (spiritual and temporal wellbeing).



Where to next

- Input and support for kaupapa / marine reserve application
- Hapu a Iwi hui
- Consultation with community
- Application to DOC