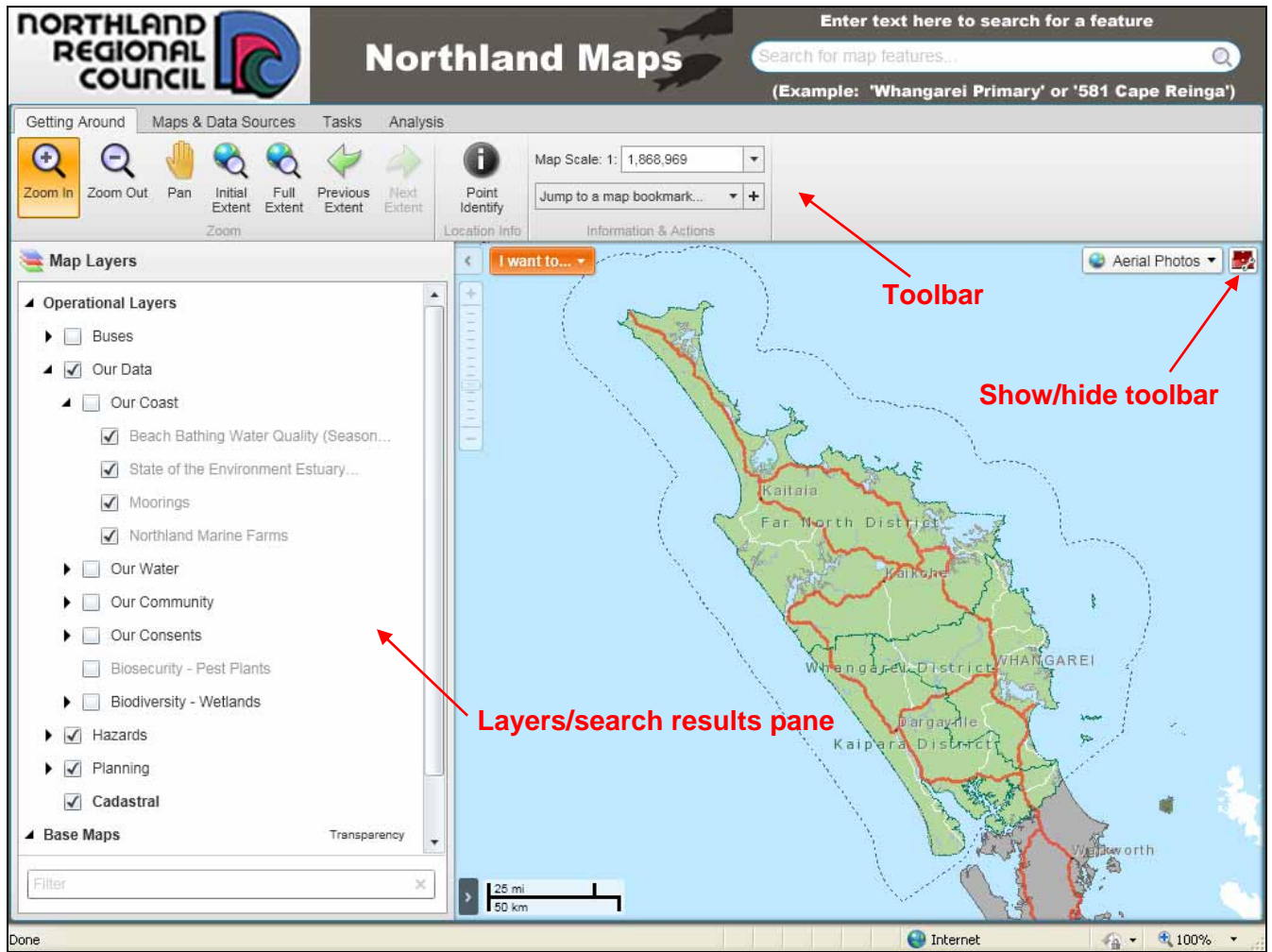






Navigating the map



 <p>Pan</p>	<p>Click the hand tool (pan) and then click and drag the map. When you let go of the mouse button it will take a few seconds for the map to re-appear.</p>
 <p>Zoom In</p>	<p>Click the zoom in tool, then click and drag a box around the area you want to zoom in on. The zoom out tool works in the same way.</p>
 <p>Full Extent</p>	<p>Click the globe icon to zoom back out so you can see the entire Northland region.</p>
 <p>Point Identify</p>	<p>Click the identify icon to get information about a feature</p>

Finding specific information

How to find a property or other items of interest:

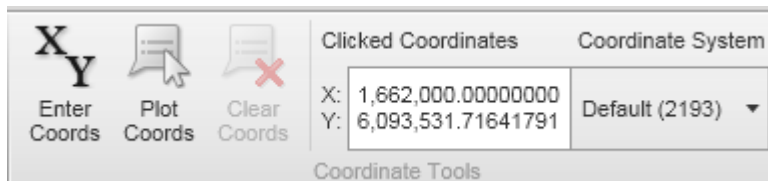
1. Enter your search into the textbox in the upper-right corner (e.g. 210 Bank)
2. Northland Maps will list results on the left of your screen, click one to zoom to its location. Double-click to view additional information.

Northland Regional Council information:

1. Explore the map layers and turn on the information you want to see on the map.
2. Use the point identify tool to view additional details.

Finding Map Co-ordinates

1. In Northland Maps, switch to the "Analysis" tab on the toolbar.
2. Use the pan/zoom/search tools to get to the location you need.
3. Click the location on the map, the co-ordinates will be displayed on the toolbar, as shown below:



General information

Northland Maps is best viewed at a screen resolution of 800 x 600 and above and requires Microsoft Silverlight which can be installed [from here](#).