

NORTHLAND REGIONAL COUNCIL Agenda

For an Ordinary Meeting of the Council to be held in the
Council Chambers, 36 Water Street, Whangarei,
on Wednesday, 15 April 2009 commencing at 1 pm

File 105.2

**Recommendations contained in the Council agenda are NOT Council decisions.
Please refer to Council minutes for resolutions.**

Opening Prayer

Apologies

Declaration of Conflicts of Interests

OPEN MEETING

Item	Page
1. Presentation by Te Ahu Charitable Trust regarding Multi Functional Community Facility at Kaitaia	1

COUNCIL AND PROJECT INFORMATION

2. Confirmation of Minutes of Ordinary Meeting held on 15 March 2009	3
3. Chairman's Report to the Council	11
4. Chief Executive Officer's Report to the Council	13
5. Local Government New Zealand Annual General Meeting and Conference	36
6. Far North District Council Draft Long Term Council Community Plan	37

FINANCE AND IT

7. Financial Report – 31 March 2009	40
8. Investment Schedule and Performance – Financial Report March 2009	49
9. Paid Accounts for Approval – 31 March 2009	53

COMMUNITY RELATIONS

10. Northland Regional Council 2009 Environmental Curriculum Awards	54
---	----

OPERATIONS

11. Consents Decisions and Applications in Process	55
12. Appointment of Hearings Committees	61
13. Report on Environmental Monitoring for the Period 1-31 March 2009	62
14. Warrants of Appointment : RMA 1991 and Biosecurity Act 1993	89

Business with the Public Excluded 91

IN COMMITTEE

15. Confirmation of Confidential Minutes of Meeting held on 18 March 2009	92
16. Shareholder Governance	95
17. Enterprise Northland	114
18. 2009/2010 Draft Statement of Intent – NRC Community Trust	119
19. Infrastructure Development Agency	130
20. Local Government New Zealand Vehicle Allowances	145
21. Bonding Alternatives for Aquaculture Industry	154
22. Annual Performance Review of the Chief Executive Officer	159

Presentation by Te Ahu Charitable Trust

File 105.2

BACKGROUND OF THE TE AHU CHARITABLE TRUST

In 2003 Fiona King of the Far North District Council's Northern Community Board and subsequently full council identified the need to replace/upgrade a number of its facilities in Kaitaia. Following this, in 2004 the Far North Regional Museum also started pursuing replacement and expansion of existing facilities.

From early on it was recognised that the bringing together of all of these facilities had many advantages but particularly in reduced capital and operational costs, enhanced visitor experience possibilities along with delivering the ability to leverage external funding through an exceptional and unique visitor experience.

Seed funding was allocated work began on identifying the best structure to achieve the objectives.

This concept allows Te Ahu to access over 1/3 of the total capital costs from non council funding sources meaning the district attains a \$15m + facility for a cost of only \$9.5m to the FNDC.

Further, the operational costs will be at the same or lower levels than currently experienced whilst providing greatly increased levels of service and capacity.

Te Ahu is a genuine opportunity to provide a multifunctional, integrated facility where the sum of the parts far exceeds what the parts individually could achieve.

Fundamentally, Te Ahu will provide for either the refurbishment or replacement of: Far North Regional Museum, Kaitaia Library, Kaitaia i-SITE, Kaitaia FNDC Service Centre, Kaitaia Art Gallery, Community Toilets, Car Parking, Far North Community Centre and Little Theatre in addition to adding Café, Retail and appropriate Circulation/Foyer space to mould all of the components together.

TRUSTEES AND GOVERNANCE

The Te Ahu Charitable Trust was developed through 2006 by the FNDC and Shadow Trustees and was officially registered by way of the trust Deed in February 2007. The donor was Millie Srhoj with Robin Shepherd also prominent in the establishment phase.

The main reason for establishing Te Ahu as a charitable trust was to access funds for the project that the Council may not be able to access in its own right. The Trust's purpose as per the Trust Deed are:

"Providing, Maintaining, Resourcing, and Managing Multipurpose Community Facility Buildings to be located in Kaitaia and intended to house a local museum, public library, visitor information centre, and/or gallery and or art display areas, for the benefit, use and enjoyment of the Kaitaia and surrounding communities".

Te Ahu is a Council Controlled Organisation with all trustees being appointed by the FNDC with the exception of the Far North Regional Museum and Te Rarawa Trustees who were put forward by their own respective organisations.

Te Ahu is made up of the following Trustees:

1. Ian Bamber – Chair – Councillor – Farmer and Ex President of the PSA
2. Mary Jane Ardley – Prominent local business woman and President of Vision Far North
3. Murray Rae – Fishing Charter Operator and retired COO of Bendon Industries
4. Kevin Robinson – Current CEO of Te Runanga o Te Rarawa
5. Phil Cross – Chair of the Far North Regional Museum Trust, Local Tourist Operator and member of the Te Hiku o Te Ika (Northern) Community Board
6. Dixon Motu – Local Hapu representative
7. Eric Shackleton – Local Chemist, Businessman and JP
8. Susan Gray – (Co-Opted Trustee) Successful local Artist representing the interests of the Art Community

WORK COMPLETED TO DATE AND KEY DOCUMENTS

A number of key background works have been undertaken to date including:

1. Community Engagement
2. Review of existing facilities
3. Site Selection
4. Visitor Experience, Concept Design, QS Costs and Operational Planning / Sustainability
5. Fundraising activities

CRITICAL PATH FROM HERE

Most of the core base work has now been completed. The main areas that are still being worked through are finalisation of funding, continued development of design including preliminary, detailed and working drawing stages along with agreeing operational structures and sustainability through further development on the Business Plan.

It is envisioned that construction will start in mid-2010 and take approximately 12-15 months to complete.

We look forward to meeting you all on 15 April where further presentation material and detail will be provided by the Te Ahu trustees.

NORTHLAND REGIONAL COUNCIL

Minutes of the Ordinary Meeting of the Council, held at the Northland Regional Council, 36 Water Street, Whangarei, on Wednesday, 18 March 2009 commencing at 1 pm

File 105.2

PRESENT: Crs Mark Farnsworth, Ian Walker, John Bain, Craig Brown, Joe Carr, Peter Jensen and Bill Rossiter.

In Attendance

Full Meeting

Chief Executive Officer
Strategy and Planning Director
General Manager - Projects and Information
General Manager - Finance and IT
Council Administration Programme Manager

Part Meeting

Deputy CEO/Operations Director
Local Government Senior Programme Manager
Community Relations Manager
Monitoring Senior Programme Manager
Resource Management Planning SPM
Consents Senior Programme Manager
Senior Project Accountant
Projects & Information Team Admin/PA

OPENING PRAYER

The Council Administration Programme Manager read the opening prayer.

APOLOGY

Resolved: That the apology from Cr Hill for non-attendance be received.

Cr Bain : Cr Brown

DECLARATION OF CONFLICT OF INTEREST

File 100.1.2

The Chairman gave members the opportunity to declare an interest on any item of business on the agenda for the meeting.

Cr Bain declared an interest on the proposal for funding the Northland Emergency Helicopter Trust contained within the Draft LTCCP and withdrew from the meeting for item 5.

Cr Walker declared a potential interest in the new item of broadband access in the Hokianga.

ITEMS OF NEW BUSINESS

Resolved: That the Council agrees to consider the following items of new business for the reasons shown:

OPEN MEETING**1. THE TAG (Technical Advisory Group) REPORT**

This item is for the information of Councillors and does not require a decision.

2. CONFIRMATION OF MINUTES OF THE AUDIT AND FINANCE COMMITTEE MEETING HELD ON 25 FEBRUARY 2009

This item was inadvertently omitted from the Council agenda and as the Audit and Finance Committee meeting scheduled for 25 March 2009 has been cancelled, confirmation of these Minutes is necessary to enable the Committee's recommendations to be adopted and actioned.

3. 2009/2010 DRAFT STATEMENT OF INTENT – NORTHLAND REGIONAL COUNCIL COMMUNITY TRUST

This item was originally scheduled to be included on the agenda for the Audit and Finance meeting scheduled for 25 March 2009. As this meeting has been cancelled, the reason for urgency is that consideration and comment on the draft Statement of Intent (SOI) will facilitate full compliance with the legal requirements around the SOI contained in the Local Government Act.

CONFIDENTIAL MEETING**4. CONFIRMATION OF CONFIDENTIAL MINUTES OF THE AUDIT AND FINANCE COMMITTEE MEETING HELD ON 25 FEBRUARY 2009**

This item was inadvertently omitted from the Council agenda and as the Audit and Finance Committee meeting scheduled for 25 March 2009 has been cancelled, confirmation of these Minutes is necessary to enable the Committee's recommendations to be adopted and actioned.

5. NORTHLAND PORT CORPORATION (NZ) LTD - PROPOSAL

The report expands on an issue covered in item 15 on page 71 of the agenda.

Cr Walker : Cr Rossiter

1. CONFIRMATION OF MINUTES OF ORDINARY COUNCIL MEETING HELD ON 25 FEBRUARY 2009

File 105.2

Resolved: That the minutes of the Ordinary Meeting of the Council held on 25 February 2009 be confirmed.

Cr Jensen : Cr Carr

2. CHAIRMAN'S REPORT

File 105.4

Report from Chairman Mark Farnsworth dated 5 March 2009.

The Chairman tabled a letter from the Mayor of Whangarei District regarding the Regional Events Centre and the allocation of two Rugby World Cup games to be played there.

Resolved: That the Chairman's report dated 5 March 2009, be received.

Cr Farnsworth : Cr Rossiter

COMPLIANCE WITH DECISION MAKING PROCESS

The activities detailed in this report are provided for in the Council's 2006-2016 LTCCP, and as such are in accordance with the Council's decision making process and sections 76 to 82 of the Local Government Act 2002.

3. CHIEF EXECUTIVE OFFICER'S REPORT

File 105.3

Report from Chief Executive Officer Ken Paterson dated 6 March 2009.

Resolved: That the Chief Executive Officer's report dated 6 March 2009, be received.

Cr Rossiter : Cr Brown

MATTERS ARISING FROM CEO'S REPORT

Electricity: Auckland – Northland National Grid Upgrade

Cr Rossiter gave an oral presentation on the public conference held by the Electricity Commission in Auckland and the strong recommendation made for a review of the decision to decline funding.

COMPLIANCE WITH DECISION MAKING PROCESS

The activities detailed in this report are provided for in the Council's 2006-2016 LTCCP, and as such are in accordance with the Council's decision making process and sections 76 to 82 of the Local Government Act 2002.

4. LOCAL GOVERNMENT COMMISSION – PROPOSAL TO TRANSFER HAURAKI GULF ISLANDS TO THAMES-COROMANDEL DISTRICT

File 188.6

Report from Chief Executive Officer Ken Paterson dated 11 March 2009.

Resolved: That the Local Government Commission be thanked for its invitation to meet and discuss the proposal and advised that this Council does not wish to meet the Commission to discuss the proposal as it is not directly affected by it.

Cr Walker : Cr Brown

COMPLIANCE WITH DECISION MAKING PROCESS

This item relates to a statutory requirement of the Council imposed by section 37(3) of schedule 3 of the Local Government Act 2002 and as such is in accordance with the Council's decision making process and sections 76-82 of the said Act.

5. DRAFT LONG TERM COUNCIL COMMUNITY PLAN 2009-2019**File 100.5**

Report from Chief Executive Officer Ken Paterson, General Manager – Finance and IT Lisa Aubrey and Local Government Project Manager Deborah Ryder dated 3 March 2009.

Francis Caetano, Audit Director attended the meeting and outlined the unqualified audit opinion. He congratulated the Council on the professionalism of the staff involved with the LTCCP process.

Resolved: That the Draft Northland Community Plan 2009-2019 be approved for release for public comment, and that the Chief Executive Officer and Chairman be authorised to make any minor editorial changes to the Plan.

Cr Jensen : Cr Brown

COMPLIANCE WITH DECISION MAKING PROCESS

This Draft Northland Community Plan 2009-2019 has been developed in accordance with the requirements of the Local Government Act 2002, and will be adopted using the special consultative procedure detailed in Sections 83 and 84 of the Act.

6. DRAFT SUMMARY FINANCIAL PLAN 2009/2010**File 318.1**

Report from General Manager Finance and IT Lisa Aubrey and Senior Programme Manager Finance Simon Crabb dated 4 March 2009.

Resolved: That the draft Financial Plan be approved as the budget estimates supporting year one of the 2009/2019 Northland Community Plan.

Cr Jensen : Cr Farnsworth

COMPLIANCE WITH DECISION-MAKING PROCESS

This plan is in accordance with the Council's decision-making process and Sections 76-82 of the Local Government Act 2002.

7. FINANCIAL REPORT – 28 FEBRUARY 2009**File 350.4**

Report from General Manager Finance IT Lisa Aubrey dated 5 March 2009.

Resolved: That the financial report to 28 February 2009, be received.

Cr Rossiter : Cr Brown

COMPLIANCE WITH DECISION MAKING PROCESS

The activities detailed in this report are provided for in the Council's 2006/2016 Long Term Council Community Plan, as such are in accordance with the Council's decision-making process and sections 76-82 of the Local Government Act 2002.

**8. INVESTMENT SCHEDULE AND PERFORMANCE – FINANCIAL REPORT
28 FEBRUARY 2009**

File 350.4

Report from Financial Systems Administrator Kym Ace dated 9 March 2009.

Resolved: That the Investment Schedule and Performance Report to 28 February 2009 be received.

Cr Rossiter : Cr Farnsworth

COMPLIANCE WITH DECISION MAKING PROCESS

The activities detailed in this report are provided for in the Council's 2007/2008 Annual Plan, and as such are in accordance with the Council's decision-making process and Sections 76-82 of the Local Government Act 2002.

9. PAID ACCOUNTS FOR APPROVAL

File 350.9

Report from Payments Officer Rachel Hills dated 28 February 2009.

Resolved: That the payments for February 2009, as detailed in the report from the Payments Officer, Rachel Hills dated 28 February 2009 be approved.

Cr Carr : Cr Rossiter

COMPLIANCE WITH DECISION MAKING PROCESS

The activities detailed in this report are provided for in the Northland Community Plan 2006-2016, and as such are in accordance with the Council's decision making process and Sections 76-82 of the Local Government Act 2002, and the requirements of the Public Bodies Contracts Act 1959.

10. CONSENTS DECISIONS AND APPLICATIONS IN PROCESS

File: 430.1

Report from Acting Consents Senior Programme Manager Allan Richards dated 1 March 2009.

Resolved: That the information on resource consent decisions and applications in process be received.

Cr Rossiter : Cr Bain

COMPLIANCE WITH DECISION MAKING PROCESS

The activities detailed in this report are provided for in the Council's 2006/2016 LTCCP, and as such are in accordance with the Council's decision-making process and sections 76-82 of the Local Government Act 2002.

11. APPOINTMENT OF HEARINGS COMMITTEES

File 110.8

Report from Acting Consents Senior Programme Manager Allan Richards dated 3 March 2009.

- Resolved:**
1. That Cr Hill (Chair) and Mr Rob van Voorthuysen be appointed to hear and decide the application by **North Holdings Limited CON20082038401** for construction and operation of a wastewater treatment wetland at Ruakaka.
 2. That Cr Carr jointly hear and decide, together with the appointees of the Far North District Council (Lead Agency), the applications by **Neil Construction Limited CON20082200401** for earthworks for a 170 lot subdivision at Kerikeri.
 3. That Cr Walker, together with the appointees of the Far North District Council (Lead Agency), jointly hear and decide the applications by **Orange Centre Limited CON20071987601** for sewage disposal and earthworks associated with a proposed visitor centre development at Kerikeri.

Cr Brown : Cr Bain

COMPLIANCE WITH DECISION MAKING PROCESS

The activities detailed in this report are provided for in the Council's 2006/2016 LTCCP, and in accordance with the Council's statutory delegations approved in July 2004. As such they are in accordance with the Council's decision making process and sections 76-82 of the Local Government Act 2002.

12. BENTZEN FARM COVENANTS

File 110.8

Report from Acting Consents Senior Programme Manager dated 5 March 2009.

- Resolved:** That the Chief Executive Officer be authorised to execute the covenants received from Bentzen Farm Limited and from Craig Leonard Heatley and Hayley Maree Pyle under the Common Seal of the Council.

Cr Jensen : Cr Rossiter

COMPLIANCE WITH DECISION MAKING PROCESS

The activities detailed in this report are provided for in the Council's 2006/2016 LTCCP, and in accordance with the Resource Management Act 1991. As such they are in accordance with the Council's decision making process and sections 76-82 of the Local Government Act 2002.

13. CONFIRMATION OF MINUTES – ENVIRONMENTAL MANAGEMENT COMMITTEE MEETING

File 110.12

- Resolved:** That the Minutes of the Environmental Management Committee meeting held on 18 March 2009 be received and the Committee's recommendations adopted.

Cr Brown : Cr Jensen

SUPPLEMENTARY ITEMS**THE TAG (TECHNICAL ADVISORY GROUP) REPORT**

File 220.4.6

Report from Chairman Mark Farnsworth dated 14 March 2009.

Resolved: That the Chairman's TAG report dated 14 March 2009 be received.

Cr Walker : Cr Carr

COMPLIANCE WITH DECISION MAKING PROCESS

The activities detailed in this report are provided for in the Council's 2006-2016 Long Term Council Community Plan and as such are in accordance with the Council's decision making process and sections 76 to 82 of the Local Government Act 2002.

CONFIRMATION OF MINUTES – AUDIT AND FINANCE COMMITTEE MEETING

File 110.11

Resolved: That the Minutes of the Audit and Finance Committee meeting held on 25 February 2009 be received and the Committee's recommendations adopted.

Cr Jensen : Cr Carr

2009/2010 DRAFT STATEMENT OF INTENT – NORTHLAND REGIONAL COUNCIL COMMUNITY TRUST

File 150.1

Report from Local Government Senior Programme Manager Kathryn Ross dated 16 March 2009.

Resolved: That the Northland Regional Council Community Trust Draft Statement of Intent for the year commencing 1 July 2009 be received.

Cr Farnsworth : Cr Walker

COMPLIANCE WITH DECISION MAKING PROCESS

The receiving of this report, and the subsequent recommendations are provided for in the Council's 2006-2016 Long Term Council Community Plan, and as such are in accordance with the Council's decision making process and sections 76-82 of the Local Government Act 2002.

The meeting agreed to consider this item at the April Council meeting.

BROADBAND ACCESS TO HOKIANGA

Cr Bain raised the issue of the proposal for a translator located on a small area of Department of Conservation administered land that would allow the provision of broadband access for Hokianga residents. To date the department have delayed resolution of this issue. Cr Carr agreed to provide the Chairman with further information on the issue.

The meeting directed the Chairman to address the issue with the appropriate parties with a view to achieving a speedy resolution. The Chairman agreed to report back to the Council to endorse the actions taken.

BUSINESS WITH THE PUBLIC EXCLUDED**File 105.2**

Resolved: That pursuant to the Local Government Official Information and Meetings Act 1987, the public, with the exception of Mr Vazey and Mr Smillie for the NPC item, be excluded from the remainder of the meeting to consider:

1. Confirmation of the confidential section of the Minutes of the Ordinary Council meeting held on 25 February 2009.
2. Northland Port Corporation (NZ) Limited.
2. Annual Performance Review of Chief Executive Officer
4. Confirmation of the confidential section of the Minutes of the Audit and Finance Committee meeting held on 25 February 2009.

The reason for excluding the public in relation to items 1 and 4 are as stated in the Minutes of those meeting.

In relation to item 2, public conduct of the proceedings would be likely to result in the disclosure of information, the withholding of which is necessary to allow the Council to conduct without prejudice or disadvantage commercial activities pursuant to Section 7(2)(h) and (i) of the said Act

In relation to item 3, the reason for excluding the public is to protect the privacy of natural persons as protected by section 7(2)(a).

Cr Jensen : Cr Farnsworth

OPEN MEETING

Resolved: That the Council resumes in open meeting.

Cr Rossiter : Cr Carr

CONCLUSION

The meeting concluded at 3.35 pm.

Chairman's Report

File 105.4

Report from Chairman Mark Farnsworth dated 1 April 2009.

MEETINGS/EVENTS ATTENDED

During the period I have attended the following meetings/events/functions:

- Meetings attended with the Council's CEO, Ken Paterson:
 - Keeping Northland Working Forum.
 - Martin Matthews, CEO and Bernadine Walsh, Stakeholder Engagement Executive Northern Region, Ministry of Transport and Cr John Bain.
- Meetings attended with Deputy Chairman, Ian Walker:
 - A very successful meeting was held on Council's direction with Brian Craig, Warren Slater, Mike Mansell, Wayne Deeming and Roger Brookes. Cr Peter Jensen also attended.
 - Mike Kake and Michael Malloy – Maori economic development through the production of methanol.
 - Radio interview in Kaitaia with Rongo Bentson.
- Local Government New Zealand:
 - Regional Affairs Committee conference call on Chapter 7 of the TAG Report.
 - Cr Bill Rossiter and I attended the Zone 1 meeting held at Waitakere City Council.
 - National Council meeting in Wellington.
- Electricity Commission Public Conference.
- Representatives from Northland Regional Council and the three District Councils attended a meeting to discuss Northland's roading issues with Hon Phil Heatley.
- Noel Paget – Proposed Community Swimming Pool for Mangawhai.
- Cr Craig Brown and I met with Mait Cole and Dave Dobson from the Whangarei Indoor Bowling Association concerning space for the Association at the Northland Events Centre.
- Luncheon meeting with Mike Simm to acknowledge his services as Trustee and Chair of the Northland Regional Council Community Trust.
- Co-hosted afternoon tea with Whangarei District Council Mayor, Stan Semenoff, for the Heads of Mission Study Tour.
- Dinner meeting in Auckland with Peter Buckley, Chair, Environment Waikato.
- Breakfast meeting in Auckland with Mike Lee, Chair, Auckland Regional Council.
- Dr Te Tuhi Robust, Jess Cherrington, Prof Peter Malin – Research development in the region.

- Dinner meeting in Auckland with Mike Lee, Peter Buckley and John Cronin – Royal Commission Report.

NETWORKING

- Meetings, as requested, with residents and ratepayers;
- Councillors;
- Media.

Recommendation

That the Chairman's report dated 1 April 2009 be received.

COMPLIANCE WITH DECISION MAKING PROCESS

The activities detailed in this report are provided for in the Council's 2006-2016 Long Term Council Community Plan and as such are in accordance with the Council's decision making process and sections 76 to 82 of the Local Government Act 2002.

Chief Executive Officer's Report to Council

File 105.3

Report from Chief Executive Officer Ken Paterson dated 6 April 2009.

PROJECTS AND INFORMATION

LONG TERM COUNCIL COMMUNITY PLAN (LTCCP)

In early March changes recommended from Audit NZ and the Office of the Auditor General were made to the Draft LTCCP before it was submitted for final review. The Draft was subsequently adopted by Council on 18 March and received an unqualified opinion from Audit NZ.

The Draft LTCCP went to print on 2 April and copies are expected to be available internally on 6 April and to the public on 8 April. The Summary was printed 27 March and is expected to be delivered to over 59,000 households between 8 and 9 April. A review of the LTCCP key stakeholder database was held in February this year resulting in an updated list of key people that will receive document directly by mail at the time of notification. This year the LTCCP and Summary will be available in hardcopy, CD and on the Council website.

To date 14 submissions to the Draft Plan have been received prior to the public notification date of 8 April, all relating to the Northland Emergency Services Trust.

ADMINISTRATION

There were no complaints made against the Council/staff during the month of March to date and no complaints remain outstanding.

HUMAN RESOURCES

STAFF MATTERS

Leaving

Rhea Dasent, Consents Officer finished her employment with the Council on 25 March 2009. Rhea left to take up a position with Federated Farmers in Hamilton.

Toni Lee Kemp, Nassella Tussock/Lantana Ranger finished her temporary employment on 27 March 2009. Toni has been retained on a casual (as and when required basis).

Appointments

Marie-Amelie Belanger commenced employment as GIS Officer on 2 March 2009.

Allen Temple commenced employment as Hydrology Monitoring Officer on 23 March 2009.

Vacancies

The position of Environmental Monitoring Officer – Coastal was advertised internally and externally during the month with applications closing on 12 March 2009. One hundred and three applications were received. Short listing of applicants has been conducted and interviews scheduled for 2 April 2009. A decision is expected shortly.

The fixed term position of Environmental Monitoring Officer – Water Quality/Land Use was advertised internally and externally during the month with applications closing on 2 April 2009.

The positions of Estuary Management Advisor, Surveyor/River Management Officer, Policy Specialist – Resource Policy, Biosecurity Officer and Wastewater Management Officer – Engineer are on hold. In the meantime temporary and/or consultant staff are being used as required.

STAFF ESTABLISHMENT

Status	March 2009	March 2008	Feb 2009
Full Time Permanent	118	108	116
Part Time (including fixed term)	16	12	16
Fixed Term	4	4	5
Students/TFG	3	3	3
Vacancies	7	12	8
TOTAL	148	139	148

STAFF TRAINING

Internal Training

Twelve staff attended Performance Management training on 2 March 2009. The training was facilitated by Judy Macdonald, Human Resources Manager.

External Training

Training Course	Dates 2009	Venue	Attendees
Dune Restoration Trust Conference	18-20 March	Piha	L Shaft
ALGIM Executive Board Meeting	19 March	Auckland	J Dawson
National CDEM Managers Conference/Seminar	24-26 March	Wellington	G MacDonald
Kiwi Saver and Tax Changes	30 March	Whangarei	J Atkinson, K Ace

HEALTH AND SAFETY

There have not been any incidents of serious incident or injury in March.

The Stadium Project Management Team and the Health and Safety Advisor for the Northland Regional Council have been in regular communication and there have not been any Health and Safety incidents with the project reported.

COMMUNITY RELATIONS

PUBLIC COMMUNICATIONS

Northland's media was monitored for items of interest to the Council. Media releases were sent to appropriate media concerning the following:

- Dye to test Waikare Inlet's tidal movements
- Consents granted for BOI wastewater scheme
- Gale, heavy rain warnings for Northland
- NRC concerned over North Port Corp share buy back
- Draft 10-year NRC Community Plan approved
- NRC sheds light on Earth Hour switch-off
- Green light for Paihia waterfront redevelopment
- Bold move by Royal Commission

Council's monthly column in the 'Rural Advocate' looked at the 'Priority Rivers Flood Risk Reduction Project', an innovative and sustainable approach to flood risk reduction for 27 Northland rivers and streams.

The Chairman's monthly '*From Where I Sit*' and '*Northern Matters*' columns looked at the impact of the recession and Northland's ability to respond to the pressures through the Council's growth programme, to be implemented in part by Enterprise Northland.

EVENTS

An open day was held on 28 March in the front car park of Council's Whangarei office to help promote and celebrate Earth Hour. The event was held from 7-11am to coincide with the Whangarei Farmers' Market. Displays included reducing your environmental footprint, household sustainability, composting and worm farming, weed and pest control and native planting. Giveaways included reusable NRC shopping bags, wild pork meatballs and energy efficient light bulbs (donated to Earth Hour by Energy Mad). The event was very well received with several hundred people attending. Earth Hour was held from 8.30-9.30 pm the same day, involving 44 cities and towns throughout New Zealand and nearly a billion people worldwide. No other Councils north of Rodney were involved in Earth Hour.

WEBSITE

Monthly Usage:

	March 2009	Feb 2009	Jan 2009	Dec 2008	Nov 2008	Oct 2008
Visits ¹	34,356	31,633	31,202	26,867	30,919	32,371
Files downloaded ²	11,816	8,787	9,942	8,112	9,071	10,804

1. The **Visits** report reveals the total number of times that people have visited the website during the month.
2. The **Downloads** report shows the total number of files (e.g. PDFs) that were downloaded during the month.

Most popular pages :

- Job vacancies
- Whangarei Bus Service
- Press release about gale and heavy rain warnings
- River and rainfall data
- Resource Library – Plans and Policies

EDUCATION

Northland Regional Council School Visits

There were 23 school visits during March. Subjects covered included EnviroSchools programme monitoring and development, students contributing to coastal sustainability, marine biosecurity, sand dunes and how to protect them, plus weeds and pests and how to contribute to stopping their spread. Staff from the Community Relations and Operations Departments contributed.

Northland Regional Council Teacher Workshops

Planning continues for the Council's annual teachers' workshop opportunity. The application process has been completed and teachers notified. Teachers from south of Dargaville to near Kaitaia are attending. This year's workshop theme is HARBOURING opportunity - Environmental Education in ACTION. The May

workshops will explore the sustainable management teaching opportunities available in the Bay of Islands.

School Teaching Resource Development

Environmental Education staff worked with NRC project leaders to begin developing schools resources. This included a new Northland-based DVD resource for Northland dune lakes, updating of a Bay of Plenty-based dunes teaching kit called Life's a Beach with Northland material and creating a new Northland-based marine pests teaching resource.

Enviroschools

The NRC continues to work with Team Solutions to carry out the face-to-face survey of Northland Enviroschools. Facilitators are touching base with each Enviroschool to determine environmental action planned and associated support requirements. The NRC Enviroschools Facilitator visited 11 schools in March and plans to visit five more this month.

The Term One Northland Enviroschools facilitation meeting was held on 19 March, with all members present. Matters discussed included the introduction of an Enviroschools newsletter, regional events, new resources and upcoming professional development provided by the national Enviroschools Foundation.

Planning is underway for two Northland Youth Jam environmental events for secondary school students in September. In past years, a few Northland schools have participated in national Youth Jams and gained much from their experiences. This year all Northland secondary Enviroschools will be able to take part in either of the Far North and Whangarei events. The programmes are likely to include youth teaching youth student workshops, skills workshops and environmental actions. The Youth Jams will be led by the Enviroschools Foundation and supported by NRC and Team Solutions staff.

The EcoHut challenge was launched in March and will be judged in 12 months' time. This is a competition open to all 700 Enviroschools in New Zealand. It involves building youth-inspired habitats that support nature to grow, convert and redistribute natural energy, nourish soil, provide natural warmth and express the culture of local communities. Parameters include spending less than \$100, using three square metres maximum floor area, two metres maximum height and one metre maximum off the ground.

During the month of March, NRC has been approached by three schools wanting to explore the Enviroschools programme in view of becoming an Enviroschool. They are Karetu, Whangarei Intermediate and Springbank Schools.

IWI LIAISON

A Maori representation workshop was held at the offices of Te Runanga A Iwi O Ngapuhi on 11 March. The meeting was an initiative of the Far North District Council (FNDC) and the Maori Representation Task Group. The ILO attended on behalf of NRC to see where there might be opportunities for a regional engagement model.

In late March, agreement was reached between the FNDC and NRC to jointly fund a proposal by Te Runanga O Ngati Hine to investigate the feasibility of establishing a monitoring laboratory.

In a separate development, Te Runanga o Whaingaroa has submitted a proposal to both the NRC and the FNDC for funding to compile an Iwi Environmental Management Plan. The proposal has also been submitted to the Nga Whenua Rahui

Matauranga Fund. Both Councils will be meeting with the Runanga during April to discuss the proposal further.

The ILO attended a New Zealand Land Transport and Ministry of Transport workshop on the six objectives contained in The Land Transport Act 2003. The purpose of attending was to gain a greater understanding about the Cultural Objective contained in the Act and the role of the Cultural Representative on the Regional Transport Committee. Other meetings attended during March include meeting with Te Hauauru Trust and with Phil Grimshaw of the FNDC to discuss a joint working paper which is to be presented to the Iwi Local Government Chief Executive Officers meeting. A meeting was also held with consultant Haydn Solomon who is compiling the Whangarei Harbour Cultural Audit document.

FINANCE AND INFORMATION TECHNOLOGY

Council is showing a sound financial position to the end of March with a net operating surplus of \$4.1M against a budgeted surplus of \$2.6M. Year to date expenditure is currently tracking \$1.1M behind budget. In addition Extraordinary items have added a further \$1.4M to income for the year to date. The expenditure variances are expected to be absorbed over the next three months and to be on budget by year end.

FORESTRY

Forest development work is continuing in line with the Forest Management Plan and 2008/09 Budget.

- The first lift prune of the 2003 stands – 70.0 ha to be pruned – has been underway for three months and was due for completion at end of March. To date the larger area (2003B - 51.1 ha) is almost complete, but 2003A (19.0 ha) remains. Olsens have (again) been asked to ensure that the contractor (Silvicultural Contractors) gives this work priority to complete it as soon as possible.
- The final thin to waste of the 2000 planted areas – 40.9 ha. This work has now commenced with some 10 ha (25% of area) completed to date. This should be completed within two months.
- Foliar sampling was organised and completed on the 1999 area (15.6 ha) as per the work programme. Results showed all nutrient levels satisfactory except for Nitrogen which was marginal. A decision was made not to fertilise at this stage but defer and resample foliage in March 2011 and fertilise at this point if required.

INFORMATION TECHNOLOGY

Scoping work is continuing on the IRIS project. Work is continuing around the selection of the successful tender for the SAN project.

STRATEGY AND PLANNING

RESOURCE MANAGEMENT PLANNING

One Plan Feasibility Report

The Northland Regional Council (NRC) has signalled through its LTCCP that it intends to explore the possibility of preparing a single resource management planning document for Northland. The NRC currently has four operative resource management planning documents: the Regional Policy Statement for Northland (RPS); Regional Air Quality Plan for Northland (RAQP); Regional Coastal Plan for

Northland (RCP); and the Regional Water and Soil Plan for Northland (RWSP). In addition, the three territorial local authorities (TLAs) each have operative district plans.

Section 78A of the Resource Management Act 1991 (RMA) provides the opportunity for combined regional and district planning documents to be prepared. Any such document can include a combination of two or more of the following:

- Regional Policy Statement
- Regional Plan
- District Plan

The Resource Management (Simplifying and Streamlining) Amendment Bill proposes to repeal s78A and replace it with a new section (s80) which is similar to the existing s78A but provides clearer guidance on the combinations of combined plans that can be considered.

There are many combinations of planning documents possible because the NRC has chosen not to prepare a single regional plan but has produced three separate regional plans. The various combinations are likely to have different advantages and disadvantages from a technical and workability perspective, however at this stage the NRC has not evaluated these.

Work has started on a feasibility report which assesses the respective advantages and disadvantages of each combination and once such a report is prepared a decision can be made as to whether the NRC should proceed with developing a One Plan further, and what form such a Plan should take. The feasibility report is due to be completed by 30 June 2009.

As reported to the Environmental Management Committee at its March meeting, the Council will not be proceeding with a number of draft plan changes to the RWSP, RCP, and RAQP that staff have been working on. The time and effort that has been put into these draft plan changes will not be lost because this work would be incorporated into the One Plan planning process. However, in the event that the One Plan feasibility report results in the current planning framework (i.e. having three separate regional plans and an RPS) being identified as the most efficient and effective framework and therefore retained, then the current draft plan changes would then be progressed.

Regional Coastal Plan Change 1 (Mooring and Marinas), Regional Coastal Plan Change 2 (Marine 1 Review - Whangarei Harbour) and Regional Coastal Plan Change 3 (Mangrove Management)

The Council has adopted all three of these Plan Changes. The Council's seal has been affixed and the Plan Changes forwarded to the Minister of Conservation for final sign off to make it fully operative. It is expected the Minister will approve the Plan Changes within the next month. The next step will then be for the Council to make these fully operative by way of a public notice.

Regional Coastal Plan Change 4 (Aquaculture Management)

The Council's decisions on Plan Change 4 were notified on 26 April 2008. Twelve appeals were received. Approximately 23 parties have sought to attach to one or more of the appeals. A Council subcommittee was established at the December Council meeting with the delegated authority to resolve the appeals on Plan Change 4.

There have been three meetings of all the parties (September 2008, November 2008 and February 2009) with the assistance of a Council sponsored mediator. The primary issue of the appeals and discussion at the mediation is the extent of the restriction/exclusion areas i.e. where aquaculture will not be allowed.

At the February 2009 mediation meeting an alternative approach in respect of restriction/exclusion areas was proposed by some of the appellants. Staff discussed this alternative with the subcommittee and it subsequently indicated that it would not accept the alternative as it was a significant shift from the Council's decision.

In a report to Court (6 March 2009) Council staff proposed a deadline of 31 May 2009 for possible resolution of the issues, and any unresolved issues after this date to then be directed to the Court for resolution.

The Court has subsequently asked Council to canvas the appeal parties' views on Court assisted mediation. A letter was sent to the Court (31 March 2009) outlining that all the parties considered mediation should continue, but there were different views as to whether it should be a continuation of the Council sponsored mediation or Court assisted mediation. In the letter to the Court Council staff reinforced the proposal of setting a date for the conclusion of the informal discussions. No further direction from the Court has been received at this stage.

Through the Aquaculture Planning Fund (a contestable fund administered by Ministry for the Environment) \$10,000 has been secured by the Council to assist with the costs of the Council sponsored mediator. Even if the presiding Judge directs that Court assisted mediation should commence, Council staff consider there is still a role for the Council's mediator to continue working with the parties 'behind the scenes'.

Mooring Management Plans

Russell and Matauwhi Bay – Draft Mooring Management Plans have been prepared for both Russell and Matauwhi Bay mooring areas and, after a presentation at a public meeting on 17 February 2009, stakeholders were given until 20 March 2009 to make submissions on the plans. The draft plans were posted on the NRC's website with a feedback form, which is available in electronic format. One submission was received on each draft plan seeking minor changes. The drafts will be reviewed in light of this feedback but significant changes to the plans are unlikely. Final drafts are to be completed by the end of April 2009.

Opua – A survey for the six mooring areas around Opua received 155 responses. A working group has been assembled and comprises representatives from FNDC the DoC, Iwi, Far North Holdings Limited, Moorings Northland, Opua Cruising Club and NRC staff. A meeting of this working group has been scheduled for 7 April 2009 to discuss the survey results and commence the development of draft Mooring Management Plans. The Opua area comprises the largest concentration of moorings in the Bay of Islands. It is also the site of the Opua Marina and wharf and is therefore a relatively complex area. It is anticipated that draft mooring management plans for the six mooring areas will be developed by the end of April 2009.

Mangawhai – Kaipara District Council (KDC) has developed reserve concept plans for both Alamar and Sellars reserves on the margins of Mangawhai Harbour. Staff have provided feedback to KDC on the concept plans, which were released for public submission on 20 March 2009. The submission period closes 21 April 2009, with final decisions likely to be made in June 2009. The final draft Mooring Management Plan for Mangawhai depends upon the outcome of the KDC consultation process, particularly in relation to the type, scale and location of facilities such as toilets, parking and dinghy storage. As such, a final draft is not expected to be finalised until

June 2009. In the meantime, work on non-KDC dependant issues will be progressed.

Regional Water and Soil Plan Change 2 (Animal Effluent Discharges)

The Hearing Committee reconvened on 31 March 2009 to complete deliberations on Plan Change 2 (Animal Effluent Discharges). It is anticipated that the Hearing Committee's decision will be reported to Council in May.

OTHER PLANNING MATTERS

Landuse and Subdivision Applications

During March 2009, 25 resource consent applications were received from the Whangarei, Kaipara and Far North District Councils. There were 20 non-notified applications and five notified applications. The NRC provided comment on seven applications, and made five formal submissions (of which four were on applications received in February).

A variety of comments were made regarding stormwater management, wastewater management, development on an "at risk" aquifer and coastal hazard mitigation.

The formal submissions made for March 2009 were as follows:

G A Phillips, Paihia – This was a retrospective application to relocate two buildings onto a site susceptible to flooding. A submission was made requesting that the buildings be removed after a period of three years (as stated in the application), unless resource consent was granted for permanent retention be made a condition of consent. NRC also advised that if the buildings were to be inhabited, that a detailed engineering report should be provided addressing the suitability of the site in respect of any issues associated with flooding, wastewater and stormwater management.

M and G Whitehead, Otaika – This was an application to subdivide a site totalling 4.5ha into three lots. A submission was made supporting the proposed formal covenanting of indigenous vegetation. The submission advised that the development was located on an 'at risk' aquifer, and to ensure development does not result in contamination, or a reduction in groundwater recharge. The applicant's engineer's wastewater recommendations were supported and requested to be made conditions of consent.

R McCluggage and K Silkovas, Tikipunga – This was an application to subdivide a site totalling 2.79ha into two lots. A submission was made opposing the application in its current form, and the WDC was advised that insufficient information was provided by the applicant regarding wastewater and stormwater management. Specifically, it was not possible to determine whether additional consents were required from NRC for wastewater, and a discharge permit would be required for the proposed stormwater disposal. Therefore, it was requested that the application be put on hold under s91 of the RMA, pending the application for these consents.

ALMGNZ Family Trust, Parua Bay – This was an application to subdivide a site totalling 3.59ha into 2 lots. A submission was made opposing the application in its current form, and the applicant was advised that insufficient information was provided regarding wastewater and stormwater management. The applicant was also advised that a discharge permit was required for the discharge of domestic wastewater, and that NRC consent would be required for stormwater disposal if the current situation remained. Therefore it was requested that the application be put on hold under s91 of the RMA, pending the application for these consents.

G and R Burnard, Whangamumu - This was an application to subdivide two lots to create eight rural-residential lots ranging from 2100m² to 1.38ha. A submission was made opposing the application in its current form, and the WDC was advised that insufficient information was provided regarding wastewater and stormwater management. Specifically, it was not possible to determine whether additional consents were required from NRC for the proposed wastewater discharges, and NRC consent would be required for the proposed stormwater disposal. Therefore, it was requested that the application be put on hold under s91 of the RMA, pending the application for these consents if necessary. Also, with regard to potential flooding, the WDC was advised that the development should be "flood-discharge neutral" and that further discharges as a result of future development in the catchment should be taken into account in the flood analysis calculations.

Resource Management (Simplifying and Streamlining) Amendment Bill

The Resource Management (Simplifying and Streamlining) Amendment Bill ("the Bill") was introduced by the National Government and the first reading was passed on 19 February 2009. The Local Government and Environment Committee (being a select committee of Parliament) is seeking submissions and the closing date for such submissions is 3 April 2009. The select committee is due to prepare its report by 19 June 2009.

Council staff have analysed the Bill and a Council workshop was held on 18 March 2009. The Council were in general agreement with the comments and position Council staff had taken on the changes proposed in the Bill. Council staff have prepared a submission which has been signed by the Chairman and CEO and this has been sent to the select committee for its consideration.

Vehicles on Beaches

In light of a letter received from Hon Rodney Hide, which stated that the Hon John Carter will be "picking up" the vehicles on beaches issue, a letter signed by the Chairman and Regional Transport Chairman, was sent to the Hon John Carter seeking his views on the best way forward in the Kaipara and Far North districts. No response has been received to date.

INFRASTRUCTURE

Northland Transport Futures – 50 Year Vision

The four Chief Executives and the Regional Representative for NZTA have developed a draft 50 year vision for the transport future of Northland. This partnership approach has been initially developed as a presentation and was presented to Hon Phil Heatley at a recent transport meeting he requested.

The intention is to develop the presentation into a short strategy that will be essential in influencing the Regional Land Transport Strategy (a 30 year strategy) and will be a key document for further discussion with the Infrastructure and Transport Minister in order for Northland to secure its share of the available infrastructure fund.

OPERATIONS

CONSENTS

Consents in Process

During March 2009, a total of 56 Resource Consents were issued. These comprised:

- 3 Moorings
- 4 Coastal Permits
- 2 Air Discharge Permits

- 30 Discharge Permits
- 5 Land Use Consents
- 8 Water Permits
- 4 Bore Consents

175 Decisions were issued as detailed elsewhere in the Agenda.

- 84 Applications were received.

Of the 516 applications in progress at the end of March:

- 153 were received more than 12 months ago (most awaiting further information);
- 49 were received between 6 and 12 months ago (most awaiting further information);
- 314 less than 6 months.

MONITORING

HOTLINE – ENVIRONMENTAL INCIDENTS

The number of environmental incidents reported during March was above average with 98 incidents being reported compared with an average of 82 for the period since the Hotline began operating. The categories of incidents are outlined in the table below:

INCIDENTS	MAR 2009	FEB 2009	JAN 2009	TOTAL YEAR TO DATE	Annual Average 1993-2008
Air					
Burning and Smoke Nuisance	31	20	17	68	116
Other Air incidents	24	14	17	55	217
Land Use					
Earthworks and Vegetation Clearance	7	3	5	15	72
Other Land Use Incidents	4	0	1	5	33
Water Quality					
Sewage	9	7	8	24	66
Farm Dairy Effluent	1	1	1	3	24
Other Water Quality Pollution	8	19	22	49	123
Waste Management					
Hazardous Substances, spills and refuse	4	6	6	16	98
Coastal					
Structures in Waterbodies/CMA	3	0	1	4	19
Vehicles on Beaches	1	3	2	6	9
Other Coastal Activities	4	5	1	10	36
Water Quantity					
Water Abstractions	0	1	3	4	7
Other	2	2	2	6	79
TOTAL	98	81	86	265	845

AIR QUALITY

Incidents

Fifty-five air quality related environmental incidents were received in March. The majority of the complaints received were for burning and smoke nuisance (31 complaints). A huge increase in air incidents (21 more than the previous month)

could be the result of dry weather suitable for both burning and agricultural application.

WATER QUALITY AND DISCHARGE MONITORING

Fifty-three compliance visits for consented discharges have been recorded since the last report. A total of 480 samples were collected, with 617 NRC laboratory analyses undertaken. A summary of discharge compliance monitoring is tabulated below.

Full Compliance	Minor Non-compliance	Significant Non-Compliance	Total
35	17	1	53

NRC staff attended the Ngawha Community Liaison Group meeting on 24 March. Some residents alleged that adverse health effects are being caused by discharges from the geothermal plant. This has been referred to Northland Health. The hydrogen sulphide monitoring station in the village shows that the concentrations are generally low and not above concentrations known to result in adverse health effects.

As part of the Northland Sewage Accord initiative, work is being carried out to create a web-based system where the compliance of all municipal wastewater treatment plants is shown on a regional map. It is anticipated that this will take a similar form as the bathing water quality data. That is, a green light for full compliance, amber for minor non-compliance and a red light for significant non-compliance.

The end of season debrief for the bathing site monitoring was held in early March. Staff from Northland District Health Board, Whangarei District Council and Far North District Council and NRC attended. There was much debate around response procedures to NRC monitoring and it was agreed to review the current protocol for next season. Northland Health is to draft a revised protocol based on the discussions at the meeting. There is also to be a review of the signage currently used by Councils when conditions are unsafe. The potential for extending the monitoring season was also discussed and this is to be considered for next season. It was agreed that further monitoring this season would occur in some areas through to Easter. A meeting to review signage has been set down for April.

Farm Dairy Effluent (FDE) Monitoring

All routine monitoring was completed before Christmas 2008. FDE officers are currently undertaking follow-up visits to farms that were found to have significantly non-compliant discharges and checking compliance with abatement notices. Up until 31 March 2009, two hundred and one follow-up visits have been made. An additional 32 farms have had visits at the request of the farm owner/operator. Many farmers have agreed to upgrade their systems as a result of these visits. A focus of the follow-up visits has also been to address management issues and staff training of farm workers responsible for effluent management.

WATER RESOURCES

Water Take and Bore Compliance Monitoring

River flows were elevated as a result of two major rain events, one in late February and the other in early March. Consequently, consent compliance monitoring for the surface water takes was not required to any significant extent.

Hydrology, Telemetry and Maintenance

The telemetry system continued to operate very efficiently during March with one major rainfall event closely monitored over two days. As a result several flood warnings were issued. High water levels in the Waiotū River damaged the river sensor unit and reference board at the telemetry station.

A new groundwater network site for a deep monitoring bore at Mangawhai is being investigated. There is increasing groundwater allocation from the Waitemata monitoring data available on this aquifer. The new bore will provide water quality and level information required for the sustainable management of the resource.

Water Resources

The eastern coastal areas of Northland were affected by a heavy rain event on 5 March, the area having just recovered from a heavy rain event a week earlier. Rain was relatively isolated, affecting areas south of Kaeo and north of Whangarei. On 4 March the MetService issued severe weather warning for 5-6 March, indicating that the region could receive 80-110mm rain over a period of 18 to 21 hours, with rainfall intensities reaching 20mm/hr to 30mm/hr. Flood warnings were issued for the Awanui, Kaeo, Kerikeri, Wairua, Hikurangi Swamp, Kaihu and the Mangakahia River Catchments. Generally, recorded rainfall amounts for this event were as predicted by the MetService.

Heavy rain commenced in the Kaeo area on 5 March. In the upper Kaeo River catchment 77mm was recorded. Water levels in the Kaeo River at the Fire Station peaked 0.6m below that of the February event and caused no major flooding.

The most intense rain occurred in the Puhipuhi Hills where 226mm was recorded over 24 hours, of which 154mm fell over an eight hour period. Rainfall intensities reached 31 mm/hr. By late evening on 5 March a second flood warning was issued to farmers in the Hikurangi Swamp indicating that the stop banks would be breached early morning on 6 March. A flood warning was also issued for the Lower Wairua River and the Tangiteroria area. As predicted flood waters overflowed the Hikurangi Swamp stop banks over a period of 12 hours.

For the latter part of March weather patterns were very settled with little rain recorded. Low rainfall amounts for March were recorded in the Far North and west coast areas from North Hokianga to Dargaville. River and stream flows were near average or above average during for this time of year while ground water levels are above average.

COASTAL MONITORING

Bi-monthly sampling to assess water quality in Whangarei Harbour and Bay of Islands was undertaken in March. A total of 32 sites were sampled.

Compliance monitoring of marinas was undertaken and results are being collated.

Survey maps and data of the east coast of Northland were received from NIWA and LINZ for the 'Bay of Islands Ocean 20/20' project. Phase 1 was completed in March and a summary was presented to NRC coastal staff.

Kaipara Harbour Water quality monitoring project is successfully through to the final Envirolink funding round, involving NRC working with ARC to assess baseline water quality in the harbour. Kaipara Harbour was identified this month by NIWA as one of the most important nursery grounds for the west coast snapper fisheries. Sedimentation of the harbour and poor water quality was considered by NIWA to be the greatest threats to the juvenile snapper habitats in the Kaipara Harbour.

Estuarine Monitoring

Sediments and biological communities were surveyed in two harbours and one estuary under the 'Northland Estuary Monitoring Programme (EMP)'. Sediment cores were taken at sites in Kaipara and Whangarei Harbours and Ruakaka Estuary.

These cores are being processed over the coming months to determine harbour and estuary health based on the number and types of animals >1mm in size and the sediment quality.

Monitoring was also completed this month on recently established sediment plates at the above sites to determine current accumulation rates in Northland's estuaries and link sediment accumulation rates to the health of biological communities at these sites. This project aims to address increasing public concerns that increased sediment inputs from land use and land based activities are having adverse impacts on the health of estuarine and coastal environments.

Coastal Community Groups and NRC Liaison

NRC chaired the Waiora Hokianga community group's monitoring sub-committee meeting, to discuss a bi-monthly water and shellfish quality monitoring programme. Monitoring staff at NRC and FNDC will be assisting the community group with this programme.

NRC monitoring staff are liaising with two other community groups; BOI Maritime Park Inc. and Whangaruru Coastal Community Group, to identify their specific concerns and design monitoring programmes similar to the above Waiora Hokianga to address these concerns.

LAND USE MONITORING

There were 28 compliance visits recorded for land use activities since the last report. A summary of land use compliance monitoring is tabulated below.

Full Compliance	Minor Non-compliance	Significant Non-Compliance	Total
13	13	2	28

WASTE MANAGEMENT/HAZARDOUS SUBSTANCES

Consent Monitoring

During March the following closed landfills were monitored: Glinks Gully, Ruatangata, Parawanui, Hikurangi, Kaikohe, Totara North, Ahipara, Omamari, Kaiwaka, Pahi Access Road, Mangawhai, Tinopai, Dargaville, Whangae, and Hakarau. At all of these sites water and sediment samples were collected and analysed for a wide range of contaminants, and while on site the integrity of all landfill caps was also inspected. At the time of writing this report the results of analysis had not been received from the Councils consultant laboratory. The results of analysis will be included in the next month's report.

Waste Hazardous Substance Collection

During March 525 kilograms of hazardous substances were repacked and transported to Auckland for disposal.

DOL Hazardous Substances Contract

During the month 33 inspections of workplaces storing and using hazardous substances were inspected. Prioritised premises included boat builders, hire centres and a number of service stations.

ENFORCEMENT

Abatement Notices

Three abatement Notices had been served during the March period. These all related to FDE discharges not in compliance with consent conditions or regional rules.

Infringement Notices

Ten Infringement Notices were served during the March period. These all related to FDE discharges not in compliance with consent conditions or regional rules.

Other Enforcement

An application has been made to the Environment Court for an enforcement order requiring the owner of a petrol station and the petrol company supplying the station to undertake works in relation to groundwater contamination as a result of a petrol leak. Recent follow up by Council staff indicate that some of the required works have been completed such as the establishment of a water supply to those affected. The respondent has been slow to carry out the other agreed investigation work. After some discussion with Council staff, counsel for the respondent has advised the Court that a report will be available from consultants by the end of April 2009.

Charges have been laid against several parties in relation to the deposition of material including soil, vegetation, demolition material, and domestic refuse at a site with inadequate stability and sediment control measure. This resulted in a significant discharge of this material into a small tributary of the Ngunguru Estuary. The first nominal hearing date has been set down for 9 April 2009.

MARITIME

OIL SPILL RESPONSE AND PREPAREDNESS

Marine Oil Spill Response

There were eight reported marine oil spill incidents during March. All but one of the incidents comprised small and localised spills from refuelling operations or from small vessel bilge discharges; these were investigated by maritime staff where possible. The slicks were monitored and left to disperse naturally.

A report via Maritime New Zealand (MNZ) of a "huge slick" some 18.4 nautical miles to the north-east of Houhora Harbour entrance prompted the Regional On-Scene Commander to order an aerial surveillance flight. A comprehensive search in perfect conditions revealed no sign of any pollution. Costs incurred in responding to the incident will be recovered from MNZ.

An ongoing oil spill response operation will be mounted each time the cement carrier "M.V. Golden Bay" visits Portland during the next fortnight. The vessel reported a slow leak of oil from its stern tube, which cannot be fixed until the vessel can be placed in dry-dock in April. In the interim, trained response personnel will place sorbent booms around the ship's hull to collect the oil leaking from the vessel during each visit. The cost of responding to this incident will be recovered from Golden Bay Cement Limited.

A Whangarei based NRC maritime officer was deployed to Queensland to assist with the shoreline clean-up response to the "Pacific Adventurer" oil spill. The deployment was requested by MNZ as part of reciprocal response arrangements with the Australian National Response Team. All costs associated with the deployment will be recovered from the Queensland Government via MNZ.

NAVIGATION, SAFETY AND MARITIME OPERATIONS

Port and Harbour Safety

The MNZ Port and Harbour Safety audit team carried out approval audits of the Safety Management Systems for both Whangarei and the Bay of Islands. MNZ personnel subsequently confirmed that both systems were deemed to have achieved MNZ standards:

“On behalf of Maritime New Zealand, I would like to extend our thanks to yourselves, Jon Moore at Northport, Tom and Chris at NorthTugz, and Mike at NZRC for your assistance, co-operation and warm hospitality during the harbour SMS approval audit for Whangarei on Wednesday. We were impressed with the high standard of the systems, the level of commitment to the NZ Port and Harbour Marine Safety Code shown by all parties and the excellent communication that was evident. While some parts of the port company systems are still a work in progress, the SMS seems well established and functioning effectively.

A copy of our audit report will be forwarded to you shortly. As advised, we will be recommending to the Director that the Harbour Safety Management System for Whangarei now be formally approved. A separate approval will be issued for the Bay of Islands SMS. These approvals may take some time to complete and I will keep you informed of progress.”

The Opuia based launchmaster assisted on a combined Auckland, Waikato and Northland information stand at the Auckland Boat Show.

Aids to Navigation

Two new five-knot signs were attached to either side of the Waitangi Bridge. Preparation work on the graphics for two new and larger five-knot signs for Kellys Bay and Marsden Cove and three bar crossing signs was completed by the Opuia team. The Matapouri Bay beacons were refurbished as part of the Council's rolling maintenance plan.

Aids to Navigation Failures

The number 2 port hand beacon at Tutukaka Marina was reported extinguished. New batteries were installed and the light returned to full operation. Similarly, number 2 port hand beacon at Parua Bay was also reported extinguished. In this case a replacement self contained light was installed to rectify the problem.

Maritime Incidents

There were 32 incidents reported to the Council during March. These were mainly typical of those responded to by maritime staff, with many involving debris recovery after a storm event. Two vessel departures were delayed during the storm and a range of relatively routine shipping incidents and requests were processed.

Serious injuries to coastguard personnel and damage to the Tutukaka coastguard vessel are being investigated by MNZ, the Transport Accident Investigation Commission and Coastguard themselves. The accident happened during an early morning call out to a yacht in distress. The yacht and its two occupants subsequently sailed away from the scene unscathed.

Bylaw Enforcement

Infringement Notices were issued to the owner of two jet skis, neither of which were displaying registration numbers.

Bay of Islands Pilotage

Cruise ships visits to the Bay of Islands reduced this month with the approach of the end of the current season. Four ships were piloted safely into and out of the Bay of Islands whilst a scheduled visit of the “Aurora” was cancelled due to the ship experiencing technical difficulties.

Plant Maintenance

The Council's workboat “Waikare” was withdrawn from service towards the end of the month to facilitate mechanical repairs to both engines. Technicians were brought in

to systematically work through the engine support systems in an attempt to diagnose and rectify a cooling water problem. Both cylinder heads were subsequently removed for testing prior to reassembly and tuning.

Wind speed and direction instruments were installed on "Waikare" during the month and the knuckle boom crane on the "Waikare" and the Canter Truck crane both passed their annual surveys.

TRANSPORT OPERATIONS

Due to difficulty in obtaining the relevant statistical information in time, it is proposed that statistical information relating to the Total Mobility Scheme be reported a month in arrears. This will alleviate the need to have this section of the report tabled separately.

Total Mobility

Expenditure for the month of February 2009 was \$18,281, which is below the budgeted figure of \$19,258. A total of 3,424 trips were made in February – this includes 158 trips on CityLink, with 1,185 clients registered.

Year to date expenditure is \$125,668 compared to the budgeted figure of \$154,064 for the same period. The total budget for the 2008/2009 financial year is set at \$231,100.

Passenger Service Registration

In February 2009 there was one new application for registration, one application for variation, and one abandonment of service. These all related to fare paying school runs; one operator abandoned a fare paying service but this was picked up by a second operator immediately, and some time variations were made to another run.

For the March 2009 month there were no registration, amendment or abandonment of services.

City Link Whangarei

Total passengers (includes SuperGold Card):

March 2009	25,310
Budget	25,263
Variance	+47
March 2008	22,601

Farebox Revenue

March 2009	\$56,815
Budget	47,780
Variance	+9,035.00
March 2008	31,190

An annual Passenger Satisfaction Survey was conducted during March. This is a New Zealand Transport Agency requirement in order to secure the necessary ongoing central government subsidy.

95% of the respondents rated the service as good, very good or excellent. What was of concern was that 23% of the 197 respondents rating the punctuality of the services as poor or lower. This matter was immediately raised with the operator who again reiterated the delays that the service is experiencing through the changes made to the traffic light phasing in Kensington. These delays have a ripple effect through the entire service, as vehicles do not serve one route only.

A meeting to attempt to rectify the situation has been scheduled for 6 April 2009 and will be attended by the NRC, WDC and Adams.

SuperGold Card Scheme

3,595 passengers were carried during the month of March 2009. Below is a monthly breakdown to the SuperGold Card Scheme passengers carried to date: -

November 2008	2,712
December 2008	3,033
January 2009	2,917
February 2009	2,952
March 2009	3,595

Proposed Public Passenger Transport Service – Kaitaia

Technical assistance is still being given to the Community, Business and Environment Centre (CBEC) for the implementation of a community based commercial public passenger transport service operating between Ahipara, Awanui, Coopers Beach and Kaitaia. This service is scheduled to commence operation in mid 2009.

Proposed Public Passenger Transport Service – Mid North

Technical assistance is also being given to the Far North District Council with regards to the implementation of a service in the mid north. This proposed service has been included in FNDC's LTCCP, which is currently out for public submission. It has been clarified that the NRC will lead the tender and contracting process, and be responsible for the ongoing administration of the service.

Regional Land Transport Programme (RLTP)

The RLTP was released on 16 March 2009 with the closing date for submissions being 20 April 2009.

The Government has recently released its revised draft national Government Policy Statement (GPS) for comment. To reflect the new government's economic focus, greater funding will now be directing to major state highway capital projects.

The approved GPS reflecting revised regional funding ranges is scheduled for release in mid May 2009. These proposed changes could well affect the outcome of the Draft Regional Land Transport Programme.

Draft Northland Regional Road Safety Plan (RRSP)

The proposed draft RRSP has been updated, reflecting feedback received from the recently completed targeted communication phase of the Plan review. The amended Draft Plan will be tabled at the Regional Transport Committee meeting on 21 April 2009 for approval.

Northland Stock Effluent Working Group (NSEWG)

A brief questionnaire targeting farmer's knowledge and awareness about standing stock and transporting stock was compiled for the Dargaville Fields Days. Although only 28 responses were received, useful feedback was obtained which will be reported back to the NSEWG.

It should be noted that 64% of the respondents believed that spillage on the road was a real problem that needed to be resolved. Other comments given included:

- Incentives need to be provided to help prevention;
- Farmers do not like standing stock overnight for early morning pickups;

- Farmers stated that early pickups made standing off difficult.

CIVIL DEFENCE EMERGENCY MANAGEMENT

The MetService issued severe weather warnings for two separate weather events for Northland on 27, 28 February and 5, 6 March. Both events brought substantial amounts of rain to the east coast of Northland. The first event was closely monitored as it developed due to flooding concerns in several locations in the Far North area. No formal activations of Emergency Operations Centres (EOC) were made although both events were monitored with staff on standby, to be activated if necessary.

On 17, 18 and 19 March a three-day Coordinated Incident Management Course was held and was attended by 19 personnel from a variety of agencies.

On 20 March the Ministry of Civil Defence and Emergency Management (MCDEM) issued a National Tsunami Advisory after an earthquake in Tonga. The initial assessment was that the earthquake may have caused a tsunami that could pose a threat to New Zealand. As with events of this nature, a national scientific team carried out an assessment and the advisory was cancelled a short time after it was issued. The advisory was communicated to all local and regional agencies using the standard operation procedures for warnings.

On 24 and 25 March the CDEM Senior Programme Manager attended the Regional CDEM Managers Conference in Wellington. The purpose of the conference was to bring together the regional CDEM Group Managers to discuss and review current issues, and to assist in facilitating standardised approaches to CDEM groups and plans. A presentation to the National Group Controllers Forum on 26 March was also made and on 30 and 31 March was a member of the expert panel at the National Recovery Managers course in Auckland, providing a case study presentation on Recovery in Northland after the 2007 storms.

In May 2009 a United Nations Disaster Assessment and Coordination (UNDAC) team is being deployed to Papua New Guinea to evaluate the disaster management systems in PNG. The two week mission will focus on assessments of readiness, response and recovery capabilities at local, regional and national level. The CDEM Senior Programme Manager has been selected as the New Zealand UNDAC representative for the PNG mission.

LAND AND RIVERS MANAGEMENT

LAND MANAGEMENT

Northland Field Days

Land Management staff assisted at the Council and Biodiversity Northland sites at the Northland Field Days. A number of enquiries and requests for information about the Environment Fund were received, which staff responded to and will follow up when applications for grants are invited.

Priority River Catchment Land Management Plans

Work has continued with identification of land within the Priority River catchments where existing land use may be contributing to accelerated soil erosion and sediment loading in rivers. More catchments have been GIS mapped using remote sensing data and soil and geology/rock type maps. Catchments covered during March included those of the Hatea, Otaika, Raumanga-Waiarohia, Ruakaka, Ngunguru and Kawakawa Rivers.

Ground-truthing of the mapping results continued, with the Kaihu River catchment completed along with most of the Ngunguru River catchment. In most cases ground

truthing is indicating that current land use is appropriate for the mapped Land Use Capability units. Some areas of erosion have been identified, largely confined to stream banks and small areas on steep Class 6e and 7e land, as noted in the Kaihu River catchment.

Outcomes from this work will enable targeting of soil conservation works as part of land management plans formulated in support of flood risk reduction plans for these river catchments.

Land Use Capability Workshops

Land Use Capability mapping is a land management tool which involves undertaking a land resource inventory survey and a ranking of the identified units of land according to their capability for sustained arable, horticultural, grassland, and plantation forestry use.

The Land Use Capability Handbook, first published in 1973, has recently been updated. A workshop on land use capability mapping is planned for 16 April 2009 at the NRC offices in Whangarei. The workshop will also cover other land use mapping and monitoring tools that are available through the Ministry of Agriculture and Forestry and the Crown Research Institutes.

CoastCare

The CoastCare Coordinator attended a 'Dune Restoration Trust of New Zealand' conference in Piha, where she presented an update on Northland CoastCare and received positive feedback on what has been achieved within the region.

Vehicles on Beaches (VOB)

A debrief meeting was held to cover the VOB education campaign and bylaw changes with attendance from NRC, each district council in the region, Department of Conservation and Police staff. It was concluded that the campaign has been successful with a reduction in VOB incidents, although it was recognised that further work was required and it would be beneficial to undertake the inter-agency campaign again next summer. The increased Police presence on Northland's beaches was credited for having an important part in the improved situation.

RIVER MANAGEMENT

Awanui

The contractor continued with the 2008-2009 works programme, with approximately 50% of the works complete. The majority of the contract should be completed by the end of April, favourable weather conditions pending. Contract vegetation control works are progressing within the Council works area of the Awanui River scheme. Good progress has also been made with the annual spray programme with approximately 60 % of the works complete.

The Awanui Flood Management Liaison Committee held a meeting on 2 March 2009 to consider the issue of Bell's Hill slip. The Minister of Civil Defence, the Hon John Carter and Mr Kelvin Davis, MP, attended the meeting. The risk of the slip to Kaitaia and potential risk reduction options were discussed. Following this meeting a contract was let to install additional horizontal drainage in the slip as recommended in a geotechnical engineer's report commissioned by NRC in February 2008. The additional drainage is expected to lower the water table and increase the stability of the slip. These works are scheduled for completion prior to the end of April 2009. Staff are currently considering what further investigations are required to facilitate evaluation of appropriate long term risk reduction measures.

Kaeo

The Whangaroa Rivers works contract continued with approximately 50% of the works complete. Completed works include repairs and improvements on the Kaeo School stop bank, Kaeo River gravel extraction and maintenance control of weed vegetation on the Kaeo River banks. The contractor proposes to initiate works in the outer Whangaroa Rivers during early April.

The Kaeo River – Whangaroa Catchment Management Liaison Committee meeting was held on 12 March 2009. Matters discussed included:

- A summary of progress with flood risk reduction works.
- Preliminary flood level results obtained from the Kaeo River hydraulic flood model.
- Development of flood warning systems and community response plans.
- An overview of the components of the Kaeo flood risk reduction strategy.
- Long term flood risk reduction options.
- Funding issues, including the conditional government funding offer.

Flood hazard maps for Kaeo, derived from the Kaeo River hydraulic flood model, for the 1% annual exceedence probability (AEP) flood and 1% AEP flood with climate change effects are set down for delivery in early April 2009. These maps will enable informed decisions to be made over flood risk reduction measures.

Now that the flood depth/hazard maps are available, the proposal to provide a protected and serviced site for flood prone houses, businesses and services to be moved can be developed further and costed. This will be done over the next two months and then a proposal can be put to the potential funding partners, the FNDC and central government. The proposal needs to be in the context of a long term flood mitigation strategy and be made jointly by NRC and FNDC to meet the conditions of the government funding support offer made late last year.

Kaihu River

A consultant was engaged to investigate options for flood risk reduction on the Kaihu River floodplain. The consultant will model several flood scheme improvement scenarios utilising the existing Kaihu River hydraulic model and report on risk reduction benefits. One scenario will examine effects on floodwaters if no stop banks were present on the floodplain and another will examine effects of increasing the cross sectional area of the lower river channel. Outcomes from these scenarios will be reported to the next Kaihu River Liaison Committee meeting scheduled for 15 May 2009.

Other River Works

A contractor has mobilized to remove willows that are causing river channel restrictions directly downstream of the State Highway 1 Bridge, Turntable Hill, Moerewa. These channel restrictions exacerbate flooding of the state highway during heavy rain events. These works are being done in conjunction with the New Zealand Transport Authority.

Management of Lake Owhareiti Overflow

The Lake Owhareiti Trustees called a meeting of landowners and interested parties on 23 March 2009 to discuss management of the lake overflow. Several resolutions were made at the meeting including; managing the lake level within a 1.5 metre buffer, inclusion of a passage to enable migration of eels, that NRC and NIWA prepare a proposal that addresses these two requirements, and that the landowner is consulted over the proposed options.

In the coming months NRC staff intend to further investigate the eel migration issue in relation to the overflow design, commission a review of the overflow design, determine any resource consent requirements and discuss funding issues and options with stakeholders.

Priority Rivers Project

The collection of high resolution land surface elevation data (LIDAR) for use in the Priority Rivers Flood Risk Reduction project was continued with 43% of data collection complete and over 50% of flying complete. The areas captured to date include Taupo Bay, Whangaroa Streams, Tauranga Bay, Pupuke, Waihou River, Waitangi, Kawakawa, Lakes Omapere and Owhareiti. Delivery of data for these areas is scheduled for late April and early May 2009.

The joint MWH/URS consultancy team commenced work on the Priority Rivers Flood Risk Reduction project for the development of river management plans for the 23 rivers or groups of streams let to the consultancy team under a single appointment. Work to date includes reviewing existing NRC electronic and hard copy data, refining the work schedule and completing negotiations over the NRC modelling policy statement developed for this project.

A report on the peer review of the Kerikeri-Waipapa hydraulic modelling and flood hazard mapping, jointly commissioned by the NRC and FNDC, was received. The consultant who undertook the hydraulic modelling and flood hazard mapping was requested to respond to the reviewers comments and these will be assessed prior to considering any potential issues identified in the peer review.

BIOSECURITY

COMMUNITY PEST CONTROL AREAS (CPCAs)

Three new CPCAs have been finalised in Broadwood, Portland and Bland Bay and work will get underway during April. The Broadwood project includes possum and rat control and covers 90 hectares of high value forest which has been protected long term by a QE2 Trust covenant. Argentine ants will be targeted at Bland Bay with over 100 property owners involved and 60 hectares of coastal forest at Onemama point near Portland will be protected.

Oneriri Station has a new owner and staff have arranged a meeting in April with the new owner to discuss the 4000 hectare CPCA and ongoing maintenance work.

FRESHWATER

Lake Roto-otuaru

The NRC has advertised its intention to transfer grass carp into Roto-otuaru (Lake Swan) as required by the Department of Conservation permit process. Interested parties have until 30 March to provide a submission. Eight hundred and fifty grass carp will be required to control the invasive aquatic weeds hornwort and egeria which have infested this dune lake and staff are currently negotiating an agreement with a grass carp provider.

Dune lakes video

Staff have been scoping the content of an educational video about Northland's unique dune lake systems. The National Institute of Water and Atmosphere (NIWA) have been working with a Northland company, Liquid Action Films to outline the content, timing and price.

MARINE

Styela clava

A team of NRC snorkelers surveyed the Marsden Cove Marina entrance channel markers and nearby swing moorings on 19 February to determine whether the sea squirt has spread outside the Marina. Eight entrance channel markers, 10 swing moorings and two navigational markers were inspected. A total of seven small *Styela* were found (six on the entrance channel markers and one on a nearby swing mooring). A breeding population of *Styela* does not appear to be established outside of Marsden Cove Marina at this stage, but may well be within the next six months.

Eudistoma elongatum

This white sea squirt has caused concern in the Bay of Islands and Houhora where it has spread rapidly covering shellfish beds and mudflats over summer. In response to reports of its presence in Whangarei Harbour, Council staff surveyed marine structures near Portland on 24 February and found it established on piles at the end of both wharves, but was not seen outside this area. Although the sea squirt is currently confined to a relatively small area, it is well established on Pacific oyster and piles and impossible to eradicate. The species appears to die back during winter and its potential impact is not considered serious at this stage.

Whangarei Harbour Surveillance

On 10-12 March staff accompanied the NIWA survey team carrying out six monthly target surveillance of Whangarei Harbour. The surveillance is carried out under contract to MAF Biosecurity NZ, and is focussed on detecting unwanted marine organisms. Two Asian paddle crabs (*Charybdis japonica*) were detected during the survey. A single specimen was found during surveillance in 2003, but a subsequent delimitation survey failed to find any others. The species is well established in Auckland and are likely to have been transported to Northland via a fouled vessel hull. They are an aggressive species and staff are currently discussing the potential impact and courses of action with the regions paddle crab fishermen.

Awanui and Kaeo river scheme weed control contracts

Contract vegetation control works are progressing within the Council works area of the Awanui river scheme. About half of the areas contracted to be controlled have been sprayed and works are ongoing. The small contract for maintenance control of privet, mugwort, ginger and willow regrowth control on the Kaeo river banks has been completed in the lower Kaeo River and is expected to be completed by the end of March.

LAND

Bathurst bur

A large new site covering approximately 20 ha with many semi mature plants in recently cultivated paddocks has been located between Mangamuka and Broadwood. The land owner is cooperative and undertaking control.

Californian thistle

One new Californian thistle site was found during routine works. The land owner was cooperative and already aiming to eradicate the site.

MAFBNZ – Manchurian Rice Grass

The entire second round of spraying has now started and going well. Next month staff will be assessing the work, and looking at work areas, budgets for the next round. The Council is yet to hear what the new MAFBNZ budgets will be and how this will influence work during the latter half of 2009.

Spartina

Ground based follow-up inspections and spraying where necessary, of sites in the Whangaroa and Hokianga Harbours have been carried out. Seven of the nine sites inspected had no spartina remaining and the other sites only had a very small amount.

Recommendation

That the Chief Executive Officer's report dated 6 April 2009 be received.

COMPLIANCE WITH DECISION MAKING PROCESS

The activities detailed in this report are provided for in the Council's 2006-2016 LTCCP, and as such are in accordance with the Council's decision making process and sections 76 to 82 of the Local Government Act 2002.

Local Government New Zealand - Annual General Meeting and Conference

File 161.2

Report from Council Administration Programme Manager Dean Alderton dated 6 April 2009.

The 2009 Local Government New Zealand Conference will be held in Christchurch from 26-29 July 2009 inclusive.

The theme of the Conference is "Local government: our place in the world".

Keynote speakers include:

- His Honour Judge Andrew Becroft. Judge Becroft is currently the Patron of the NZ Speak Easy Association Inc and is also President of the NZ Tertiary Students' Christian Fellowship.
- Peter Biggs. Peter is a sought-after speaker on branding, marketing, creativity and leadership.
- Mai Chen is a founding partner of Chen Palmer NZ Public Law Specialists. Mai has particular expertise in constitutional and administrative law, judicial review, regulatory issues; public body and legislative solutions.
- Hon Peter Salmon. Peter is a retired High Court Judge and is Chair of the Royal Commission on Auckland Governance.

The Annual General Meeting of the Association will be held on Wednesday, 29 July 2009.

Recommendation

1. That the Council Administration Programme Manager's report dated 6 April 2009 be received.
2. That the Chairman, Chief Executive Officer (or nominee) and Councillors and be authorised to attend the Annual General Meeting and conference as this Council's delegates.
3. That the Chairman be the Council's Presiding Delegate and that he or any other Council delegate nominated by him be authorised to exercise the Council's vote at the Annual General Meeting.

COMPLIANCE WITH DECISION MAKING PROCESS

The activities detailed in this report are part of the Council's day to day operations and as such are provided for in the Council's 2006-2016 Long Term Council Community Plan, and are in accordance with the Council's decision making process and sections 76-82 of the Local Government Act 2002.

Far North District Council Draft LTCCP

File 161.9

Report from the Local Government Senior Programme Manager Kathryn Ross dated 7 April 2009.

INTRODUCTION

The Far North District Council (FNDC) is consulting on their Draft Long Term Council Community Plan 2009-2019 (Draft LTCCP), available at www.fndc.govt.nz/your-council/strategic-planning/draft-ltccp-20092019-far-north-future-plan

Submissions close Friday, 17 April 2009 at 5 pm.

CONTENT OF THE DRAFT LTCCP

The summary document is 40 pages long. I have therefore not included it with this paper. However key points Councillors may wish to note are:

- No review of community outcomes.
- Eight strategic priorities:
 1. Value for ratepayers – *including a fair share of national funding for the far north;*
 2. Economic development of the Far North – *including realising the benefits offered by the 2011 Rugby World Cup, mineral exploitation;*
 3. Responding effectively to the growth of the District – *including developing a growth strategy to attract inwards investment;*
 4. Investment in new infrastructure as and when affordable – *including cancelling 10% discount and adding a penalty for late payment; increase in fixed line fees, reduction in “free” pans and increase pan charges (wastewater) for commercial property owners, specific consultation on the Russell Wastewater scheme – should the current funding scheme change?, differential Hokianga ferry charges;*
 5. Making FNDC a leaner, more customer-focused organisation;
 6. Safeguarding our communities – *including “continuing to press NRC to play its proposer part in flood protection and mitigation (or taking on these responsibilities as a unitary council) and emergency preparedness;*
 7. Improving the quality of life in the Far North;
 8. Community Development.
- The reference again to a unitary authority for the Far North and the abolition of the Northland Regional Council (NRC). It states that FNDC “will consult further on this issue if it is concluded that the option of a unitary council would offer significant long-term benefits to the Far North”. The link is made between this proposal and the catchment and coastal management functions of the NRC and also between a unitary authority and Maori representation on FNDC.
- Consultation on the rating system - to retain its current land value rating system or move to one based on capital value but not change the overall rate take.
- The emphasis on cost and service provision – “we would really like to know what you are prepared to give up in order to reduce rates because one thing’s for sure, you can’t have it all.” This is particularly relevant to the provision and

maintenance of infrastructure in the District and the asset divestment proposed by Council and Far North Holdings Ltd, and the use of that money.

PROPOSED CONTENT OF OUR SUBMISSION

The Chief Executive Officer has, with his management team, asked staff to consider seven broad priority areas for staff to address as appropriate in the draft Council submission, which will be tabled at the meeting. Those areas were:

- Water Quality (and sewerage);
- Robust economic planning (linked to land use planning);
- Risk management – flood hazards, priority rivers, catchments;
- Infrastructure – transport, broadband;
- Aquaculture (and link to services, water quality and sewerage);
- Water allocation; and
- Rugby World Cup.

Councillors may wish to highlight particular issues for inclusion in the submission at the Council meeting. In particular, guidance on whether the Council should comment on any individual rate increases is sought. (For example would the Council say it supports a rates increase of 2.1% to avoid cutting current levels of service on the roads? An alternative approach would be to recommend that current levels of service should not be cut).

PROCESS

Senior Programme Managers, Programme Managers and Project Managers (as appropriate) will review the FNDC Draft LTCCP focusing on these areas and the priorities the Council has set for itself in its own Draft LTCCP. The Local Government Senior Programme Manager will co-ordinate the Council response. At this stage I propose to table a draft at the April 2009 Council meeting of the key issues to be covered in the Council submission.

Given the tight timeframe for the response, the Council is asked to delegate authority to sign off the submission to the Chief Executive Officer (in consultation with the Chairman).

CONCLUSION

Councillors may wish to highlight particular issues for inclusion in the Council's submission to the FNDC Draft LTCCP. It is recommended, given the tight timeframes involved, the Chief Executive Officer, in consultation with the Chairman, be given the authority to sign off the submission on behalf of the Council.

Recommendation

1. That the report from the Local Government Senior Programme Manager dated 7 April 2009 be received.
2. That the Council highlight any particular issues for inclusion in the Northland Regional Council's submission to the Far North District Council's Draft Long Term Council Community Plan 2009-2019.
3. That the Council agrees that the submission should/should not include specific endorsement of any proposed rates increase.
4. That the Council delegate to the Chief Executive Officer, in consultation with the Chairman, the authority to sign off the submission on behalf of the Council.

COMPLIANCE WITH DECISION MAKING PROCESS

The activities and recommendations detailed in this report are provided for in the Council's 2006-2016 Long Term Council Community Plan and are in accordance with the Council's decision making process and sections 76-82 of the Local Government Act 2002.

Financial Report – 31 March 2009

File 350.4

Report by Finance Accountant, Clarry Moffitt, dated 5 April 2009.

The **Summary Council Cost of Services Statement** and **Cost of Service Statements by Activity** for the month ended 31 March 2009 are presented for Councillors' information.

OPERATING RESULTS

The Summary Cost of Services Statement shows a net operating surplus before extraordinary items for the nine months to 31 March of \$4.1M against a budgeted surplus of \$2.6M.

REVENUE

The year to date revenue at \$18.8M is tracking to budget. Revenue variances will continue to be closely monitored to ensure, where appropriate, expenditure is reduced accordingly.

EXPENDITURE

The year to date expenditure at \$14.7M is 8% less than budgeted expenditure of \$15.8M. Some of the key variances contributing to this result are highlighted below:

Consents expenditure at \$1.4M remains 6% lower than budget. Expenditure this month however is 15% over budget reflecting the increase in income in March with several large consents being processed.

Land Operations at \$3.6M is still 19% less than budget. This is largely due to timing differences. Expenditure is expected to increase in April and May as key contracts are completed.

Council and Strategic at \$2.0M is 8% under budget. Expenditure on the Regional Events Centre has now been treated as an Extraordinary item to better reflect the operating performance. The funding paid to Enterprise Northland and the offsetting Grants and Subsidies funding received from New Zealand Trade and Enterprise have now been moved through the Balance Sheet for the same reason.

EXTRAORDINARY ITEMS

Extraordinary items have been removed from operating results. The results after removing these items are a truer reflection of the operating results. The items classified as extraordinary are:

- the special dividend received from Northland Port Corporation NZ (Ltd)
- the associated tax payment and fair value decrease
- a loss on sale of investment property and the commission incurred on the sale
- the costs of the Regional Events Centre
- a further tax instalment was paid in March
- a further interim Dividend of 2.5% on the Port shares was received in March.

CAPITAL EXPENDITURE

Capital expenditure for the nine months to 31 March is \$733K. Capital expenditure has not been phased; the full year budget is \$6.3M, however it will be below the annual budget in total as it included \$2.5M set aside for the redevelopment of Commerce Street, which has now been sold.

Recommendation

That the financial report to 31 March 2009 be received.

COMPLIANCE WITH DECISION MAKING PROCESS

The activities detailed in this report are provided for in the Council's 2006-2016 Long Term Council Community Plan, and as such are in accordance with sections 76-82 of the Local Government Act 2002.

Monthly Report for	March 09							Annual Budget
	March 09			YEAR TO DATE			Var %	
	Actual	Budget	Variance	YTD Actual	YTD Budget	Variance		
Total Council Revenue								
Rates	904,785	889,366	15,419	8,083,718	8,004,292	79,426	1%	10,672,390
User Fees and Sundry	366,248	269,925	96,323	3,220,353	2,979,305	241,048	8%	3,709,980
Grants and Subsidies	140,644	116,808	23,836	1,385,593	1,330,441	55,152	4%	1,800,135
Investment Interest Income	217,750	248,748	(30,998)	2,196,667	2,238,734	(42,067)	-2%	3,449,978
Investment Property Income	412,282	415,768	(3,486)	2,178,214	2,173,498	4,716	0%	2,845,145
Forestry Harvest	0	0	0	0	0	0	-	450,000
Dividend Income	569,880	500,000	69,880	1,710,240	1,700,000	10,240	1%	1,700,000
	2,611,589	2,440,615	170,974	18,774,786	18,426,270	348,515	2%	24,627,628
Expenditure								
Consents	208,749	180,807	(27,942)	1,393,946	1,489,032	95,086	6%	2,041,010
Council & Strategic Development	139,060	258,030	118,970	2,020,548	2,192,376	171,828	8%	3,609,016
Land Operations	556,778	680,873	124,095	3,571,626	4,385,781	814,155	19%	6,625,992
Environmental Monitoring	654,534	541,895	(112,639)	4,425,022	4,456,047	31,025	1%	6,024,651
Planning and Policy	373,967	387,149	13,182	3,262,191	3,288,590	26,399	1%	4,672,613
Finance & Information Services	(31)	1	32	(33)	(2)	31	-1530%	5
	1,933,057	2,048,755	115,698	14,673,300	15,811,824	1,138,524	8%	22,973,287
Net Cost/(surplus) of Service before extraordinary item	(678,532)	(391,860)	286,672	(4,101,486)	(2,614,446)	1,487,039	-36%	(1,654,341)
Add Extraordinary Items								
Special Dividend	\$0	\$0	\$0	\$(2,735,424)	\$0	\$2,735,424	-	0
Tax on Special Dividend	\$113,976	\$0	\$(113,976)	\$661,061	\$0	\$(661,061)	-	0
Loss on sale of Investment Property	\$0	\$0	\$0	\$500,000	\$0	\$(500,000)	-	0
Fair Value adjustment of Investment Property	\$0	\$0	\$0	\$140,000	\$0	\$(140,000)	-	0
Commission on Sale of Investment Property	\$0	\$0	\$0	\$52,500	\$0	\$(52,500)	-	0
Sales of Shares	\$(1,325,331)	\$0	\$1,325,331	\$(1,325,331)	\$0	\$1,325,331	-	0
Regional Events Centre	\$1,126,291	\$0	\$(1,126,291)	\$1,334,421	\$0	\$(1,334,421)	-	0
Total Extraordinary Items	\$(85,064)	\$0	\$85,064	\$(1,372,773)	\$0	\$1,372,773	-100%	0
Net Cost/(surplus) of Service after extraordinary item	\$(763,596)	\$(391,860)	\$371,736	\$(5,474,259)	\$(2,614,446)	\$2,859,813	-109%	\$(1,654,341)
Capital	40,103			733,161				6,360,310

Detailed variance explanations are provided under each Group Activity Report.

Monthly Report for March 09

	March 09			YEAR TO DATE			Annual Budget
	Actual	Budget	Variance	YTD Actual	YTD Budget	Variance	
Total Council and Strategic Development Revenue							
Rates	295,515	292,198	3,317	2,659,632	2,629,782	29,850	\$ 3,506,376.00
User Fees and Sundry	(59,795)	4,648	(64,443)	47,299	41,832	5,467	\$ 55,776.00
Grants and Subsidies	0	0	0	0	0	0	\$ -
Investment Interest Income	0	0	0	0	0	0	\$465,000.00
Investment Property Income	412,282	415,768	(3,486)	2,172,214	2,167,498	4,716	\$465,000.00
Forestry Harvest	0	0	0	0	0	0	\$0.00
Dividend Income	0	0	0	0	0	0	\$ -
Gain/(Loss) on Sale	0	0	0	0	0	0	\$ -
Fair Value Adjustment	0	0	0	0	0	0	\$ -
	\$648,002	\$712,614	\$(64,612)	\$4,879,145	\$4,839,112	\$40,033	\$4,492,152
Expenditure							
Community Representation & Strategic Planning	\$163,471	\$183,993	\$20,523	\$1,640,552	\$1,572,946	\$(67,606)	\$2,283,839
Regional Economic Development	\$(46,694)	\$37,182	\$83,876	\$235,822	\$382,130	\$146,308	\$967,265
Commercial	\$22,283	\$36,855	\$14,572	\$144,174	\$237,300	\$93,126	\$357,912
	\$139,060	\$258,030	\$118,970	\$2,020,548	\$2,192,376	\$171,828	\$3,609,016
Net Cost of Service Before Extraordinary Items	\$(508,942)	\$(454,584)	\$54,358	\$(2,858,597)	\$(2,646,736)	\$211,861	\$(883,136)
Loss on sale of Investment Property	0	0	0	(500,000)	0	(500,000)	0
Fair Value adjustment of Investment Property	0	0	0	(140,000)	0	(140,000)	0
Commission on Sale of Investment Property	0	0	0	(52,500)	0	(52,500)	0
Regional Events Centre	1126291	0	-1126291	1334421	0	-1334421	0
Net Cost of Service After Extraordinary Items	\$617,349	\$(454,584)	\$(1,071,933)	\$(831,676)	\$(2,646,736)	\$(430,060)	\$(883,136)
Capital Expenditure	\$0			\$82,494			\$3,019,914

Revenue

Month results

Sundry Income shows a negative for the month as the payment previously recorded from New Zealand Trade and Enterprise has been removed to the Balance Sheet as it is not considered appropriate to record this through the P&L.

Apart from this correction, Revenue for the month is on budget.

Year to Date results

° **User Fees and Sundry** is now tracking on budget year to date after excluding funding received from New Zealand Trade and Enterprise.

Year end forecasts predict revenue to be on budget.

Expenditure

Month results

Commercial expenditure for the month is under budget principally due to savings in Forest maintenance.

This is a timing difference and is expected to be spent in full by year end.

Regional Economic Development is over budget because work has started on the Regional Events Centre and initial grants totalling \$1.1million have been paid in March.

Year to Date results

° **Regional economic development** is running ahead of budget year to date - the key variances are for expenditure relating to the proposed Regional Events Centre . This item was not included in the Annual Plan budgeting.

Commercial savings year to date are principally from Forest Harvesting (\$8K) and Forest Maintenance(\$62K)

with the balance spread over a wide range of accounts.

Commercial Representation shows a saving in Consultants costs of \$142K offset by additional expenditure

		March 09						YEAR TO DATE		
		Actual	Budget	Variance	Var %	YTD Actual	YTD Budget	Variance	Var %	Annual Budget
Total Consents Revenue										
Rates	40,372	39,268	1,104	3%	363,347	353,412	9,935	3%	\$ 471,216.00	
User Fees and Sundry	260,943	56,739	204,204	360%	656,117	510,652	145,465	28%	\$ 680,869.00	
	\$301,315	\$96,007	\$205,308	214%	\$1,019,464	\$864,064	\$155,400	18%	\$1,152,085	
Expenditure										
Consents Applications	\$137,606	\$103,289	\$(34,317)	-33%	\$816,502	\$847,679	\$31,177	4%	\$1,162,457	
Consents Advice and Information	\$71,143	\$77,518	\$6,375	8%	\$577,444	\$641,353	\$63,909	10%	\$878,553	
	\$208,749	\$180,807	\$(27,942)	-13%	\$1,393,946	\$1,489,032	\$95,086	6%	\$2,041,010	
Net Cost of Service										
	\$(92,566)	\$84,800	\$177,366	209%	\$374,482	\$624,968	\$250,486	40%	\$888,925	
Capital Expenditure										
	\$0				\$0				\$0	

Revenue

Month results

User Fees for March are very high due to a number of large Consents being processed. FNDC for Discharge to Waitangi wetlands and Far North Holdings for Paihia waterfront development were both individually in excess of \$50000.

Year to Date results

High level of consents for March has reversed the previous shortfall in User fees and is now 28% over budget.

Year end forecasts predict Revenue to be on budget.

Expenditure

Month results

The high level of User Fees in March has caused an increase in Consents Consultants Fees and Legal Fees being \$26000 and \$5000 over budget respectively.

Year to Date results

Consultants Fees are now on budget for Consents as a whole but Wages and Salaries, Contractor payments and Legal Fees continue to show savings.

		March 09				YEAR TO DATE				
		Actual	Budget	Variance	Var %	YTD Actual	YTD Budget	Variance	Var %	Annual Budget
Monthly Report for										
March 09										
Total Land Operations Revenue										
Rates	366,020	363,710	2,310	1%	3,294,193	3,273,391	20,802	1%	\$ 4,364,521.00	
User Fees and Sundry	19,594	39,223	(19,629)	-50%	226,075	353,016	(126,941)	-36%	\$ 470,685.00	
Grants and Subsidies	12,463	833	11,630	1396%	294,463	289,501	4,962	2%	\$ 292,000.00	
	\$398,077	\$403,766	\$(5,689)	-1%	\$3,814,731	\$3,915,908	\$(101,177)	-3%	\$5,127,206	
Expenditure										
Sustainable Land Management	\$122,810	\$135,050	\$12,240	9%	\$939,640	\$954,610	\$14,970	2%	\$1,732,557	
Hazard & Emergency Management	\$79,102	\$167,330	\$88,228	53%	\$661,821	\$986,466	\$324,645	33%	\$1,430,061	
Biosecurity Management	\$237,069	\$252,568	\$15,499	6%	\$1,266,911	\$1,610,550	\$343,639	21%	\$2,197,867	
River Management Works	\$117,797	\$125,925	\$8,128	6%	\$703,254	\$834,155	\$130,901	16%	\$1,265,507	
	\$556,778	\$680,873	\$124,095	18%	\$3,571,626	\$4,385,781	\$814,155	19%	\$6,625,992	
Net Cost of Service		\$158,701	\$277,107	\$118,406	43%	\$(243,105)	\$469,873	\$712,978	152%	\$1,498,786
Capital Expenditure		\$0								
		\$43,772								

Revenue

Month results

Variance in Grants and Subsidies is due to a Civil Defence subsidy and is largely a timing difference. User Fees and sundry continue the trends of earlier months.

Year to Date results

User Fees and Sundry Income continue to track behind budget year to date
Year end forecasts predict revenue to be on budget.

Expenditure

Month results

Cost savings in **sustainable land management** largely relate to savings in salaries and wages due to staff vacancies.
Hazard and emergency savings continue to come from Wages and Salaries and Consultants. These reflect yearly trends.

Year to Date results

Variances in **biosecurity management** relate to consultants, contractors and casual staff due to pest control contracts not coming on stream as budgeted, these variances are due to timing differences.

These have just started to come on track and expenditure is expected to be high in April and May. Variances in **hazard and emergency management** relate the contracts not yet being let.

Expenditure will increase over the coming months.

Variances in **river management works** is due to timing, contracted works will increase over the coming months and expenditure is forecast to be on budget by year end.

Monthly Report for		March 09								
		Actual	Budget	Variance	Var %	YTD Actual	YTD Budget	Variance	Var %	Annual Budget
Total Finance and IT Revenue		10,562	0	10,562	-	36,765	0	36,765	-	\$ -
Rates		985	633	352	56%	14,842	5,692	9,150	161%	\$ 7,591.00
User Fees and Sundry		217,750	248,748	(30,998)	-12%	2,196,667	2,238,734	(42,067)	-2%	\$ 2,984,978.00
Investment Interest Income		569,880	500,000	69,880	14%	1,710,240	1,700,000	10,240	1%	\$ 1,700,000.00
Expenditure		\$799,177	\$749,381	\$49,796	7%	\$3,958,514	\$3,944,426	\$14,088	0%	\$4,692,569
Finance & Information Services		\$470,395	\$460,051	\$(10,344)	-2%	\$3,383,891	\$3,298,857	\$(85,034)	-3%	\$4,466,935
Internal recharges		\$(470,426)	\$(460,050)	\$10,376	-2%	\$(3,383,923)	\$(3,298,859)	\$85,064	-3%	\$(4,466,930)
		\$(31)	\$1	\$32	3231%	\$(33)	\$(2)	\$31	-1530%	\$5
Net Cost of Service before extraordinary item		\$(799,209)	\$(749,380)	\$49,829	-7%	\$(3,958,546)	\$(3,944,428)	\$14,118	0%	\$(4,692,564)
Add Extraordinary Item		\$0	\$0	\$0	-	\$(2,735,424)	\$0	\$(2,735,424)	-	\$0
Special Dividend		\$113,976	\$0	\$113,976	-	\$661,061	\$0	\$661,061	-	\$0
Less Tax on Special Dividend		\$(1,325,331)	\$0	\$(1,325,331)	-	\$(1,325,331)	\$0	\$(1,325,331)	-	\$0
Sales of shares										
Net Cost of Service after extraordinary item		\$(685,233)	\$(749,380)	\$(64,147)	9%	\$(6,032,909)	\$(3,944,428)	\$2,088,481	-53%	\$(4,692,564)
Capital Expenditure		\$8,239				\$35,524				\$2,530,929

Revenue
Month results
 Revenue shortfall for March is in bank interest partially offset by In An interim **Dividend** was received in March of 2.5%. The gross figure of \$569880.
 * **Extraordinary Items** for the month are the sale of shares as part of the buy back process. Gross sale value of \$1555918 was reduced by original cost of \$230587.
Year to Date results
 * **Extraordinary Items**
 Council has received 2 dividend payments from Northland Port Corporation NZ (Ltd). The dividends received total \$1,709,640 and special dividend of \$2,735,424. The special dividend has been excluded from operating income and classified as an extraordinary item.
Other revenue is tracking in line with budget year to date.
Year end forecasts predict revenue excluding Extraordinary items to be \$26000 over budget.

Expenditure
Month results
 * **Extraordinary Items**
 In March Council paid a further instalment of income tax of \$113976.

Year to Date results
 * **Extraordinary Items**
 Tax paid Year to date now totals \$661,061.
Other:
 Expenditure on recruitment earlier in the year principally accounts for the year to date excess expenditure

		March 09								
		Actual	Budget	Variance	Var %	YTD Actual	YTD Budget	Variance	Var %	Annual Budget
Monthly Report for										
March 09										
Total Environmental Monitoring and Maritime										
Revenue										
Rates	50,464	56,752	(6,288)	-11%	454,184	510,766	(56,582)	-11%	\$ 681,022.00	
User Fees and Sundry	86,604	108,786	(22,182)	-20%	1,764,993	1,529,047	235,946	15%	\$ 1,776,305.00	
Grants and Subsidies	2,790	0	2,790	-	39,836	52,265	(12,429)	-24%	\$ 119,826.00	
	\$139,858	\$165,538	\$(25,680)	-16%	\$2,265,013	\$2,098,078	\$166,935	8%	\$2,590,923	
Expenditure										
Resource Consent Compliance	\$137,231	\$154,852	\$17,621	11%	\$1,327,133	\$1,286,066	\$(41,067)	-3%	\$1,766,745	
State of the Environment Monitoring	\$222,155	\$162,067	\$(60,088)	-37%	\$1,058,451	\$1,160,441	\$101,990	9%	\$1,546,857	
Environmental Incidents Response	\$114,595	\$81,770	\$(32,825)	-40%	\$695,227	\$625,725	\$(69,502)	-11%	\$835,978	
Hazardous Substances & Contaminated Sites	\$37,836	\$33,117	\$(4,719)	-14%	\$276,982	\$280,571	\$3,589	1%	\$380,544	
Oil Pollution Response	\$16,954	\$18,214	\$1,260	7%	\$167,612	\$190,456	\$22,844	12%	\$276,326	
Harbour Safety & Navigation	\$125,762	\$91,875	\$(33,887)	-37%	\$899,616	\$912,788	\$13,172	1%	\$1,218,201	
	\$654,534	\$541,895	\$(112,639)	-21%	\$4,425,022	\$4,456,047	\$31,025	1%	\$6,024,651	
Net Cost of Service	\$514,676	\$376,357	\$(138,319)	-37%	\$2,160,009	\$2,357,969	\$197,960	8%	\$3,433,728	
Capital Expenditure	\$31,864				\$568,522				\$484,917	

Revenue

Month results

User Fees and sundry have fallen behind budget for the month due to a drop in Management Fee charges.

Year to Date results

User fees and sundry continue to run ahead of budget due to the large number of infringement notices issued, and higher than usual invoicing of Farm Dairy Effluent related charges.

Year end forecasts predict revenue to be \$21000 over budget.

Expenditure

Month results

Harbour Safety and Navigation variance for March relates mainly to Decris disposal and Vessel maintenance.

This was budgeted for December and now has a nil YTD effect.

State of the Environment over expenditure results from consultants coming to hand \$73K partially offset by savings in Wages and Salaries .

Environmental Incidents over expenditure is over several accounts but mainly Consultants and Vehicles.

Year to Date results

State of the environment monitoring relate to savings mainly in wages and salaries and a variety of other accounts.

Environmental Incidents over expenditure is over several accounts but mainly Consultants, Vehicles, legal fees and Wages and Salaries.

Oil Pollution saving is in Oil pollution responses.

	March 2009			YEAR TO DATE				
	Actual	Budget	Variance	YTD Actual	YTD Budget	Variance	Var %	Annual Budget
Total Planning and Policy Revenue								
Rates	141,851	137,438	4,413	1,275,598	1,236,941	38,657	3%	\$ 1,649,255.00
User Fees and Sundry	57,917	59,896	(1,979)	511,027	539,066	(28,039)	-5%	\$ 718,754.00
Grants and Subsidies	125,391	115,975	9,416	1,051,294	988,675	62,619	6%	\$ 1,388,309.00
	\$325,160	\$313,309	\$11,851	\$2,837,919	\$2,764,682	\$73,237	3%	\$3,756,318
Expenditure								
Resource Management Planning	\$123,293	\$109,791	\$(13,502)	\$933,158	\$941,557	\$8,399	1%	\$1,275,634
Public Communication & Education	\$71,716	\$77,238	\$5,522	\$597,323	\$592,634	\$(4,689)	-1%	\$796,869
Passenger Services Administration	\$153,529	\$153,431	\$(98)	\$1,349,194	\$1,380,874	\$31,680	2%	\$2,044,917
Regional Transport Management	\$25,429	\$46,689	\$21,260	\$382,516	\$373,525	\$(8,991)	-2%	\$555,193
	\$373,967	\$387,149	\$13,182	\$3,262,191	\$3,288,590	\$26,399	1%	\$4,672,613
Net Cost of Service	\$48,808	\$73,840	\$25,032	\$424,272	\$523,908	\$99,636	19%	\$916,295
Capital Expenditure	\$0			\$2,849				\$17,350

Revenue

Month results

There are no significant revenue variances in the current month.

Year to date results

Shortfall in bus box revenue is offset by Transfund subsidies and penalty revenues.

Year end forecasts predict revenue to be on budget.

Expenditure

Month results

Passenger services admin are in line with budget for the month.

Savings in **Regional Transport management** comes from Consultants \$16000.

Resource Management Planning is over budget for the month by \$19000.

Year to Date results

Resource Management Planning overexpenditure of \$96000 on Wages and Salaries is offset by savings in consultants and contractors and numerous other accounts.

Over expenditure in **Regional Transport Management** continues in Wages and Salaries.

Passenger services admin have savings in Consultants \$30K and Printing and Stationery \$17K partially offset by over expenditure in Contracted Works \$18K.

Investment Schedule and Performance – Financial Report 31 March 2009

File 350.4

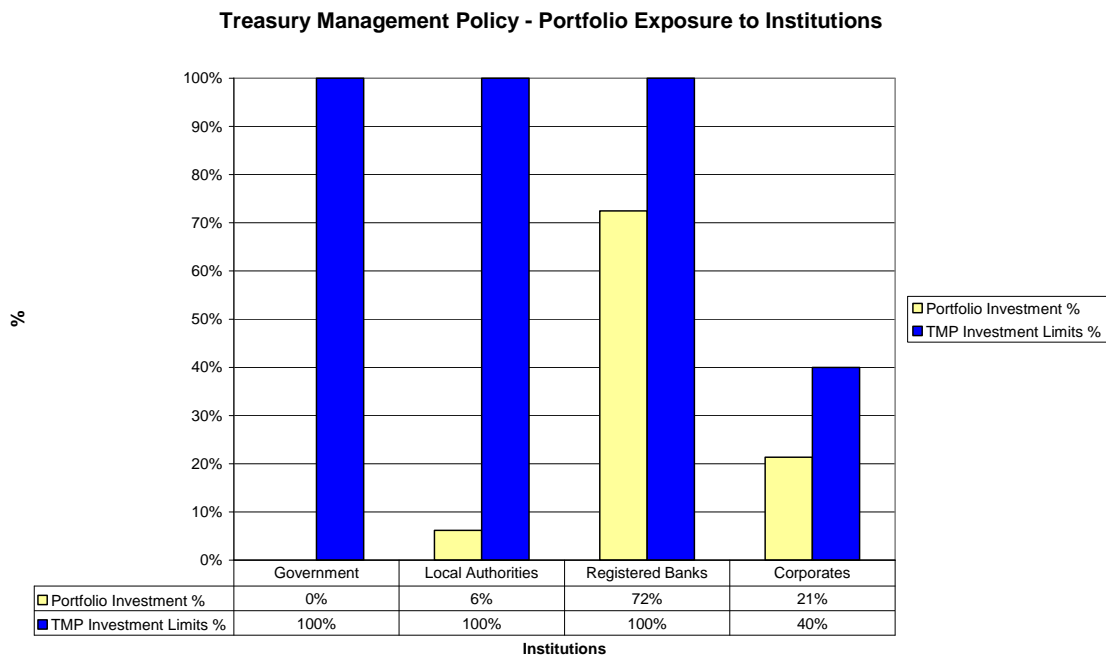
Report from Financial Systems Administrator Kym Ace dated 7 April 2009.

PURPOSE

This report provides a summary of investment performance for the nine month period ending 31 March 2009 and to report compliance against the Investment Policy. The investment policy is a requirement of section 102(4)(a) of the Local Government Act. The investment policy was adopted as part of the 2006-2016 Long Term Council Community Plan.

INVESTMENT OF CASH AND STOCK/BONDS

The graph below graphically illustrates Council's investment of cash and stock/bonds against the limits set out in the Investment Policy. Council's investment complies with the Investment Policy.



CREDIT RATING OF INVESTMENT COUNTERPARTIES

Under Council's Treasury Management Policy (TMP) section 4.2.4 qualifies the approved financial securities and the key policy parameters impacting on Council's portfolio are as follows;

- All Registered Bank counterparties must have a minimum credit rating of A-1+ for short term (<12 months) and A+ for long term
- Local Government debt does not require a rating
- Highly rated Corporates, SOE's and Crown entities must have minimum credit ratings as required for the above Bank counterparties with the rider that an unrated counterparty can be invested in if strongly recommended by expert financial advisors.

In addition to the above parameters the other key policy inclusions are;

- In all cases the credit rating of the instrument acquired must be equivalent to the credit rating of the issuing institution
- If any issuer's credit rating falls below the minimum, specified steps will be taken to reduce the credit exposure to zero (or minimise it by taking into account maturity dates and the costs of (or losses on) redemption).

On the 25 February 2009 Council resolved to allow investments to be made in accordance with the counterparty/issuer matrix included in the proposed Treasury Management policy to be adopted as part of the 2009-2019 LTCCP. The matrix is provided below:

Counterparty/Issuer	Minimum long term / short term credit rating – stated and possible	Investments maximum per counterparty (\$m)	Interest rate risk management instrument maximum per counterparty (\$m)	Total maximum per counterparty (\$m)
NZ Government	N/A	unlimited	none	Unlimited
NZD Registered Supranationals	AAA	20.0	none	20.0
State Owned Enterprises [name]	A-/ A2	5.0	none	5.0
NZ Registered Bank [name]	A-/ A2	20.0	10.0	30.0
Corporate Bonds/ CP [names]*	A-/ A2	2.0	none	2.0
Local Government Stock/ Bonds/ FRN/ CP [name]**	A-/ A2 (if rated) Unrated	20.0 5.0	none none	20.0 5.0
<ul style="list-style-type: none"> • *Subject to a maximum exposure no greater than 20% of the NFIP being invested in corporate debt securities at any one point in time. • ** Subject to a maximum exposure no greater than 60% of the NFIP being invested in Local Government debt at any one point in time <p>This summary list will be expanded on a counterparty named basis which will be authorised by the CEO</p>				

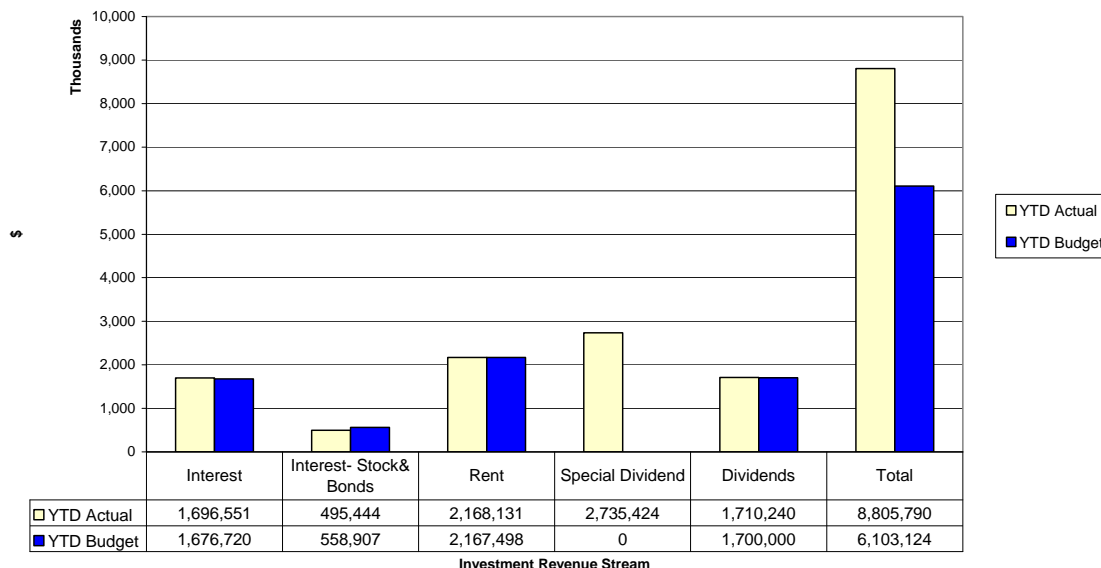
Council currently holds three investments that are below minimum credit ratings. Council is maintaining a watching brief over the credit rating of all investments and current advice supports holding these investments to maturity as allowed for in the Treasury Management Policy.

FINANCIAL YEAR TO DATE PERFORMANCE

Year to date, the investment portfolio has made a return of \$8,805,790 against a budgeted return of \$6,103,124. This return includes the special dividend received of \$2,735,424. If the special dividend is excluded, the investment portfolio has made a return of \$6,070,366 compared to a budget of \$6,103,124. On call funds are currently earning a return of 3.15% and short term deposits between 4.28 and 8.50%.

The breakdown of the year to date return by investment revenue stream is as follows:

Fund Performance against Budget



PORTFOLIO OF TOTAL FUNDS

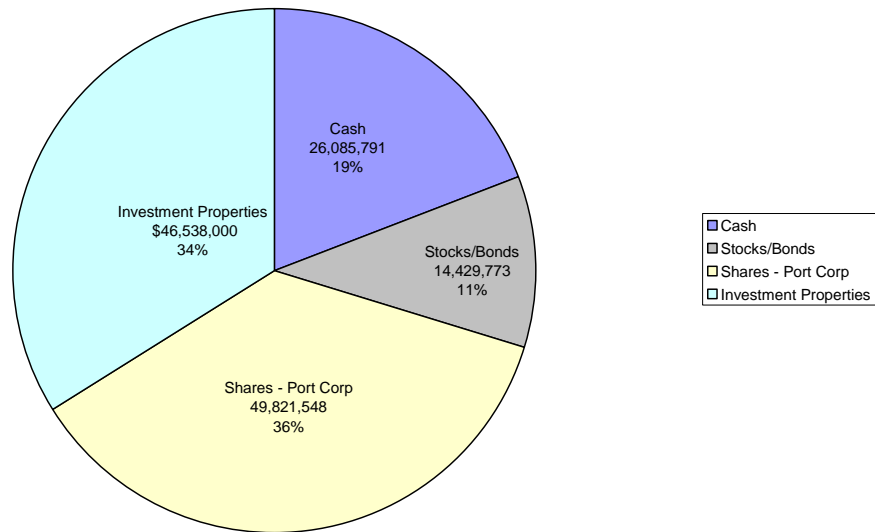
The total value of the investment portfolio as at 31 March is \$136,875,112 and is comprised of:

- Cash \$ 26,085,791
- Stocks/bonds \$ 14,429,773
- Shares – Port Corp* \$ 49,821,548
- Investment Properties \$ 46,538,000

* Northland Regional Council holds 22,142,910 shares in Northland Port Corporation (NZ) Limited. The cost value of these shares is \$7,827,563. As at 30 June 2008, the market price of these shares was \$2.75. As at 31 March 2009, the market price is \$2.25. The Northland Port Corporation has paid the following dividends:

- A special dividend \$2,735,424 (un-imputed) was paid at 12 cents per share on 30 September 2008;
- An ordinary dividend \$1,139,760 (imputed) at 5 cents per share on 30 September 2008;
- An interim ordinary dividend of \$569,880 (unimputed) at 2.5 cents per share on the 6 March 2009.

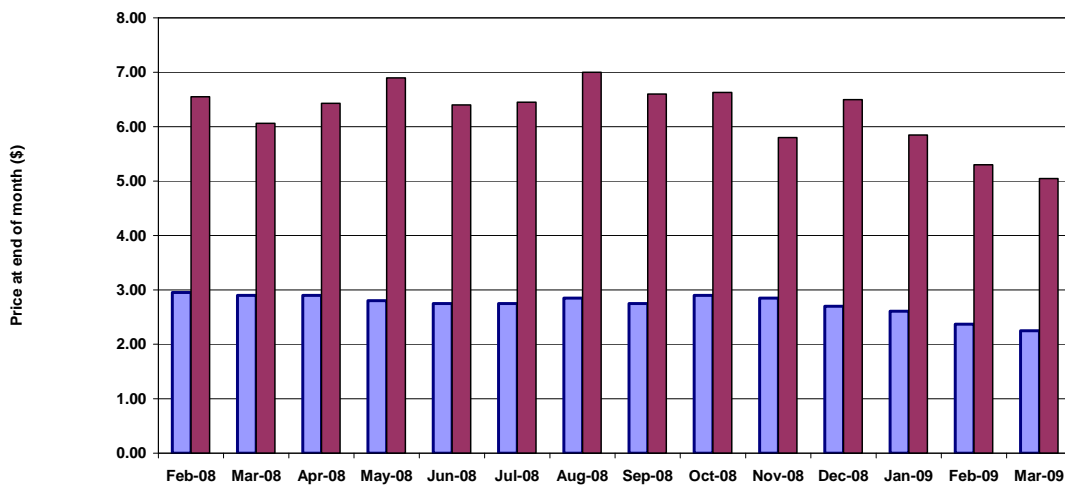
Portfolio of Total Funds



NORTHLAND PORT CORPORATION SHARE PRICE MOVEMENT

The graph below graphically illustrates the movement in the Northland Port Corporation’s share price in the current financial year. Share price data for the Ports of Tauranga has been provided for comparative or benchmarking purposes.

Northland Port Corporation Share Price Movement compared to Ports of Tauranga



	Feb-08	Mar-08	Apr-08	May-08	Jun-08	Jul-08	Aug-08	Sep-08	Oct-08	Nov-08	Dec-08	Jan-09	Feb-09	Mar-09
Northland Port Corp	2.95	2.90	2.90	2.80	2.75	2.75	2.85	2.75	2.90	2.85	2.70	2.61	2.37	2.25
Ports of Tauranga	6.55	6.06	6.43	6.9	6.4	6.45	7.0	6.6	6.63	5.8	6.5	5.85	5.3	5.05

2008/2009

Recommendation

That the Investment Schedule and Performance Report to 31 March 2009 be received.

COMPLIANCE WITH DECISION MAKING PROCESS

The activities detailed in this report are in accordance with the Council's Treasury Management Policy which was adopted in compliance with the decision-making requirements of sections 76-82 of the Local Government Act 2002.

Paid Accounts for Approval

File 350.9

Report from Payments Officer Rachel Hills dated 31 March 2009.

Set out below is the summary of expenditure that was approved and paid during March 2009.

Northland Regional Council General Account

Direct Debits	vouchers 101045 - 101064	\$16,787,844.98
Computer Cheques	vouchers 19767 - 19787	\$34,426.82
Direct Credits	vouchers 1021673 - 1021940	\$984,564.55
Payroll Transactions		\$691,613.04
Total		\$18,498,449.39

Analyses of Expenditure Classes

Labour costs	\$691,613.04
Operating costs	\$2,080,580.58
Capital Expenditure	\$33,547.84
Call/Term deposits/Investments	\$15,692,707.93
Total	\$18,498,449.39

The vouchers are available for inspection if required.

This report is tabled in terms of the Council's delegation policy made pursuant to the Public Bodies Contracts Act 1959.

Recommendation

That the payments for March 2009, as detailed in the report from the Payments Officer, Rachel Hills dated 31 March 2009, be approved.

COMPLIANCE WITH DECISION MAKING PROCESS

The activities detailed in this report are provided for in the Northland Community Plan 2006-2016, and as such are in accordance with the Council's decision making process and Sections 76-82 of the Local Government Act 2002, and the requirements of the Public Bodies Contracts Act 1959.

Northland Regional Council 2009 Environmental Curriculum Awards

File 240.5

Report from the Environmental Education Officer Susan Botting dated 3 April 2009.

INTRODUCTION

The Northland Regional Council annually offers Northland schools up to \$2,000 each through its Northland Regional Council Environmental Curriculum Awards. This Award is offered to recognise effective environmental education in the North. The Award fund totals \$20,000.

The Northland Regional Council 2009 Environmental Curriculum Awards process is now underway. More than 150 Northland schools will be sent relevant details. The 2009 application season opens on 18 May 2009. Applications for the Awards close on 10 June 2009.

As in past years, a judging sub-committee is needed to select successful applicants. The sub-committee will meet to carry out the selection process. A date will be arranged to suit the Councillors concerned. Councillors and Environmental Education Officer Susan Botting will visit successful winners at their schools and present the awards.

These awards recognise achievement in environmental education through demonstrated action for the environment. They particularly support efforts in line with the Council's regional community outcome number three: "Northland's natural environment is sustainably managed" and the Ministry of Education Guidelines for Environmental Education in New Zealand Schools.

Recommendation

1. That the report by Environmental Education Officer dated 21 April 2009, on the Northland Regional Council 2009 Environmental Curriculum Awards, be received.
2. That Crs _____ and _____ be confirmed as members of the judging sub-committee for the Environmental Curriculum Awards 2009.

COMPLIANCE WITH DECISION MAKING PROCESS

The activities detailed in this report are provided for in the Council's 2006–2016 Long Term Council Community Plan, and as such they are in accordance with the Council's decision making process and sections 76-82 of the Local Government Act 2002.

Consents Decisions and Applications in Process

File: 430.1

Report from Consents Senior Programme Manager, David Roke dated 1 April 2009.

The Consents Senior Programme Manager's report on resource consent decisions made since 1 March 2009 is circulated to Councillors under separate cover. Progress on notified applications is as set out in the following table:

NOTIFIED APPLICATIONS

Publicly Notified

Applicant	Proposal	Notification Period	Comment
Whangarei District Council CON20031137501	Replacement consents for Hikurangi Swamp flood control drainage scheme	12 December 2006 to 1 March 2007	Fifty submissions received; 28 against, 16 for, 35 wish to be heard. Pre-hearing discussions have led the Applicant to conclude that a revised application is required which will be lodged shortly, for re-notification.
Far North District Council CON20070283501 CON20070283601 CON20071912101	Kaitaia Public Water Supply	9 August 2007 to 7 September 2007	Processing placed on hold at Applicant's request to allow further consultation.
Far North District Council CON20080257701	Replacement consents for Rawene WWTP	13 August 2008 to 9 September 2008	Number of submissions received: 54 Heard; 69 Not heard; eight Not indicating; and four Late "not heard". Applicant has requested time extension to processing time to allow it to "develop a strategy for providing additional information and undertaking further consultation".
Whangarei District Council CON20010752101 CON20080752102	Replacement consent for sewage overflows from Okara Park Pump station. New application for sewage overflow into Waiarohia Stream	28 October to 25 November 2008	Total of 602 submissions received: Heard 121; Not heard 413; Not indicating 47; Others 5; Late Not Heard 13; Late Not Indicating 3. Four submissions attached petitions carrying with 52, 108, 383, and 4252 signatures respectively. A hearing was expected to be set for late February-March 2009. The Applicant will now seek a change to its application and an extension on the term of the proposed consent, and be linked into LTCC Plan process.

Applicant	Proposal	Notification Period	Comment
Kerikeri Falls Investment Limited CON20071928901	Sewage, stormwater, and earthworks associated with proposed Country Club complex, Rainbow Falls Road, Kerikeri	9 October to 10 November 2008 Jointly notified with FNDC as lead agency	Five submissions received, two wishing to be heard. Applicant has requested processing to be placed on hold until Environment Court has made a decision on its appeal against FNDC decision to not accept private plan change application. Court hearing 2 March 2009, decision still awaited.
Borneo Investments Limited CON20082022101	Sewage associated with proposed 54 residential unit development, including clubhouse and recreational building, Cobham Road, Kerikeri	9 October to 10 November 2008 Jointly notified with FNDC as lead agency	Six submissions received all wishing to be heard. Applicant has requested processing to be placed on hold until Environment Court has made a decision on its appeal against FNDC decision to not accept private plan change application. Court hearing 2 March 2009, decision still awaited.
Golden Bay Cement Limited CON20080505901	Replacement consents for various water takes, stormwater and contaminant discharges at the Portland site	12 January 2009 to 11 February 2009	No submissions received. Staff now preparing draft recommendation conditions for delegated authority decisions.
Ontrack – New Zealand Railways Corporation CON20071988401	Oakleigh to Marsden Point rail link	28 March 2009 to 12 May 2009	Notified concurrently with Notice of Requirement served on Whangarei District Council.
Kaipara District Council 20090110201	Wastewater treatment and disposal system servicing Te Kopuru	26 February 2009 to 25 March 2009	Three submissions received: two against and wishing to be heard.

Limited Notified

Applicant	Proposal	Notification Period	Comment
Far North District Council CON20070169501, Russell Motel Limited CON20070168701, Russell Bowling Club (Inc) CON20070302401, Te Maiki Villas CON20080372901, Eastern Services Ltd (Hananui Lodge) CON20060420001,	Take groundwater from the Russell aquifer for private water supplies	16 February 2009 to 16 March 2009	No submissions 'wishing to be heard'. Staff preparing staff report and draft recommendations. Joint processing of applications to renew existing groundwater takes from the Russell aquifer is occurring to enable cumulative assessment and efficient processing.

Applicant	Proposal	Notification Period	Comment
D V Stocks & J K Northcoat T/A Triton Suites Motel & Triton Lodge CON20080964901, Matauwahi Wharf Limited CON20070965401			
Kaipara District Council CON20010218701	Take groundwater from the Ruawai aquifer for public water supply	5 December 2008 to 23 January 2009	Two submissions received in support. Time extension given to enable Applicant to install the new production bore and assess water quality and yield. KDC has tender drilling contract to install new bore.
Fonterra Co-op Ltd CON20060437319	Condensate discharges from Kauri site to Wairua River	4 October 2007 to 7 November 2007	One submission received against proposal. Applicant requested a time extension to attempt resolution of issues raised and is undertaking investigations into re-use of condensate within plant. Results of investigation expected by December 2009.
Kaipara District Council CON20092284101	Construction of new floodgate across Makaka Creek, Te Kopuru	20 March 2009 to 21 April 2009	

PRE-HEARING MEETINGS

Applicant	Proposal	Held	Outcome
Whangarei District Council CON20060257601	Replacement Ngunguru sewerage discharge consents	Pre-hearing held 13 December 2006	Applicant has requested that application be placed on hold for at least a year so that it can trial performance of upgraded plant and appropriate consent conditions based on the results, particularly with regard to ammonia concentrations.
Explore NZ (2004) Limited CON20071904701	Proposed jetty in Hahangarua Bay, Moturua Island	31 October 2007	Applicant commissioning Historic Values Assessment and conducting further discussions with Ngati Kuta hapu.
AFFCO Moerewa CON20070738112	Activities resulting from inclusion of a proposed milk powder plant at Moerewa	4 February 2009	A subsequent meeting was held with the Applicant. The Applicant has agreed to supply additional information and detail on the proposal. Once this has been received, another pre- hearing meeting will be held to present the updated information to submitters, with a view to informal resolution.

Applicant	Proposal	Held	Outcome
Whangarei District Council – Wastes & Drainage Division CON20080450901	Waipu Wastewater Treatment Plant (upgrade to and extension of disposal system)	13 November 2008	Outcome generally favourable. Draft recommendations circulated to Applicant for comment. Once received, draft recommendations will be circulated to submitters, in the expectation of withdrawal of their wish to be heard at a formal hearing.
North Holdings Limited CON20082038401	Construction and operation of a wastewater treatment wetland, Ruakaka	22 January 2009	No agreement reached with submitters. Draft recommendations have been sent to the Applicant for comment. Once received, these recommendations will be circulated to submitters. A hearing is still expected to be required.

HEARINGS

Applicant	Proposal	Date of Hearing	Decision Issued/Comment
J C W Robinson CON20060788201	Section 128 Review of quarrying consent conditions	Postponed to allow Consent Holder to review technical report	Confirmation of purchase of affected property received. Staff now re-assessing the need for review of conditions.
Far North District Council CON200404369 (01-02) CON200407356 (01-08)	Consents associated with water supply for Omapere/Opononi. Existing water takes from Waiotemarama Stream and dam on Waiarohia Stream.	24 and 25 September 2007 – adjourned	Adjourned to allow the Applicant to provide the results of consultation with Iwi. Have made recent requests for update on progress but no response yet.
Far North Holdings Ltd CON20060545411	Paihia Waterfront Re-development	Commenced 28 October 2008 and reconvened on 10 February 2009	Recommendation to Minister of Conservation and Council decisions issued 24 March 2009.
Carter Holt Harvey CON20071932401	Earthworks for 121 lot subdivision at Tinopai		Hearing postponed till later in 2009 at the request of the Applicant.
Carter Holt Harvey CON20082102301	Earthworks for subdivision at Ngatoto Road, Tinopai	Reconvened hearing held on 24 March 2009	Decision pending.
Northland Regional Council CON20082141201	Stream mouth clearing in Far North and Whangarei Districts	23 March 2009	Decision issued 1 April 2009.

Applicant	Proposal	Date of Hearing	Decision Issued/Comment
Bentzen Farm Limited CON20061055818	Causeway in Waipiro Bay, Bay of Islands	24 March 2009	Decision pending.
NZ Transport Agency CON20082143201	SH 1 passing lane at Whakapara	27 March 2009	Decision pending.
Marine farms transferred under Aquaculture Reform Act 2004 (ARA)	Review of consent conditions under Sections 10 and 20 of the ARA	6 April 2009	
Orange Centre Limited CON20071987601	Visitor centre, including accommodation and service station, SH 10 Kerikeri	Joint Hearing 18-19 May 2009; FNDC lead agency	
Neil Construction Limited CON20082200401	Proposed 179 lot residential subdivision, Kapiro and Redcliff Roads, Kerikeri	Joint Hearing 27-28 April 2009; FNDC lead agency	

APPEALS/OBJECTIONS

Applicant	Proposal	Progress
Advance Developments Ltd CON20061540301	Subdivision earthworks at Tutukaka	Awaiting outcome of discussions between Applicant and appellant's consultants.
Far North District Council CON20070757701	Renewal of consent to take groundwater for public water supply at Kaikohe	Objection to consent condition, met by postponing hearing to coincide with renewal applications for other public groundwater takes at Kaikohe.
Pouto Farms Limited CON2008215801	Flood protection works at Kaihu River	Objection to decision to return application documents as incomplete but the Applicant seeks stay of hearing, meanwhile completing application detail.
Goldpine Limited CON20061698001	Roundwood production and treatment plant, Flyers Road	The Applicant has advised the Court that application is being withdrawn as project to no longer proceed. Still awaiting withdrawal of applications made to the Regional Council.
O B Holdings Ltd CON20041213701	Earthworks for 4.5 km access road for 44 lot subdivision at Cove Road, Langs Beach	Minor reduction in number of lots, but resolution not yet achieved with Section 274 parties.
Crest Energy Kaipara Limited CON20061607601	Proposed tidal power generation in Kaipara Harbour entrance	Four appeals lodged with the Environment Court. A hearing timetable is now set leading to formal hearing in June 2009.
Far North District Council Bay of Islands Community Wastewater Scheme CON20060110804	Expansion of Paihia WWTP to receive and treat additional wastewater from Kerikeri, Waipapa, Waitangi, and Russell if necessary	Two appeals received from applicant and downstream neighbour. Will attempt mediation to resolve issues.
Far North District Council CON20070266701	Replacement consents for Omapere/Opononi WWTP discharges	Two appeals received from local Iwi – seeking mediation.

Recommendation

That the information on resource consent decisions and applications in process be received.

COMPLIANCE WITH DECISION MAKING PROCESS

The activities detailed in this report are provided for in the Council's 2006/2016 LTCCP, and as such are in accordance with the Council's decision-making process and sections 76-82 of the Local Government Act 2002.

CONSENTS DECISIONS AND APPLICATIONS IN PROCESS.DOC

Appointment of Hearings Committees

File: 110.8

Report from the Consents Senior Programme Manager David Roke dated 2 April 2009.

DELEGATION TO HEAR AND DECIDE CONSENT APPLICATIONS

In discussion with the Chairperson of the Hearings Committee, it is suggested that:

A committee comprising Cr Carr (Chair) and Cr Walker be appointed, together with the appointee of the Minister of Conservation, to hear and decide Far North District Council Application 20092244601 for Reclamation and associated works for road repairs at Kohukohu Road.

Recommendation

That Cr Carr (Chair) and Cr Walker be appointed, together with the appointee of the Minister of Conservation to hear and decide Far North District Council Application 20092244601 for Reclamation and associated works for road repairs at Kohukohu Road.

COMPLIANCE WITH DECISION MAKING PROCESS

The activities detailed in this report are provided for in the Council's 2006/2016 LTCCP, and in accordance with the Council's statutory delegations approved in July 2004. As such they are in accordance with the Council's decision making process and sections 76-82 of the Local Government Act 2002.

Report on Environmental Monitoring for the period 1 March 2009 to 31 March 2009

Files 400.2 and 505.2

Report from Monitoring Senior Programme Manager Riaan Elliot dated 3 April 2009.

This report is for the period 1-31 March 2009 and contains tables summarising the RC compliance monitoring events, state of the environment monitoring events and environmental and maritime incidents reported by the public and staff, as well as staff response to each.

ABBREVIATIONS KEY:

WDC	Whangarei District Council	FNDC	Far North District Council	KDC	Kaipara District Council
DOC	Department of Conservation	NPC	Northland Port Corporation	NZRC	NZ Refining Company
NRC	Northland Regional Council	FNHL	Far North Holdings Ltd	CH	Consent Holder
STS	Sewage Treatment System	POD	Point of Discharge	PA	Permitted Activity
ESCP	Erosion and Sediment Control Plan	RAQP	Regional Air Quality Plan	RWSPN	Regional Water and Soil Plan for Northland
RC	Resource Consent	CMA	Coastal Marine Area		

COMPLIANCE CODE KEY:

Y	Yes compliance with Consent	MNC	Minor Non Compliance	SNC1	Repeated Minor Non-Compliance or Significant Non-Compliance Resulting in Minor to Moderate Effects
SNC2	Significant Non-Compliance with Significant Effects	FUS	Follow up of Significant Non – Compliance	FUR	Follow up at request of CH

CODE DESCRIPTION:

This code indicates:

- the degree of environmental **Impact**
- the **Response** taken, or to be taken, by staff
- the **Status** of the situation

Impact to the Environment

N	Natural Event	Such as flooding, earth movement or algae blooms over which there is little or no control.
U	Unknown	Results do not clearly differentiate between contamination and natural causes; or an incident has been reported sometime after its occurrence and the impact cannot readily be estimated.
0	None Detected	Inspection and-or sampling shows no impact.
1	Minor	The impact of the activity on the receiving environment was minor; effects were localised and/or temporary with non-significant deterioration in water quality, flows, and amenity value and or land stability.
2	Significant	Environmental impact is likely to extend over some distance or area, and/or could continue for some time (1-3 days), and/or a significant human health risk is likely.
3	Large	The impact is large with the environment requiring restoration or a substantial amount of time to recover (more than 1 week) and/or a major human health risk is likely.

Response of Regional Council

N	None Required or Warranted	It is a natural event or no impact has been detected. Source unknown further investigation is not warranted. Report resulting from a routine monitoring event where no follow up is required.
F	Further Investigation Required	To confirm impact, to assess impact, to locate source, or to determine compliance.
I	Information or Advice	Given on how to avoid future adverse effects.
R	Request	An explanation of the situation or how the situation arose, a statement of the mitigation measures proposed or request certain mitigation measures to be undertaken, maintenance or upgrading to prevent impacts occurring in the future.
W	Written Warning	Written warning to avoid recurrence.
C	Clean Up	Clean Up by Regional Council.
E	Formal Enforcement	Abatement Notice, Enforcement Order, Infringement Notice, Prosecution.

Status

R	Resolved	Party has fully complied with Regional Council's requests and there is no unacceptable impact to the environment, natural event that the Regional Council cannot realistically influence, no response required or warranted.
P	Pending Inspection	Prevention or mitigation measures have been reported to the Regional Council, as being in place but this has not yet been confirmed by re-inspection.
U	Unresolved	Regional Council requests to prevent or mitigate environmental impacts have not yet been met. The situation has not yet been investigated thoroughly enough to determine environmental impact. The time given for requested or required mitigation measures to be put in place have not elapsed.
M	Routine Monitoring	Routine Monitoring.

Maritime Incident Response Codes

N	No Response Required
F	Further Investigation Required
I	Information or Advice
R	Repaired/Replaced/Removed
W	Written warning issued to offender (offence notice, abatement notice)
P	Prosecution action pending
O	Other Agency

DISCHARGES TO AIR

Date	Consent	Details	Location	Comment	Code	Comp
05-Mar-09	488314	Ngawha Geothermal Resource Co Ltd: Discharge to air from power stations.	Ngawha	Self monitoring hydrogen sulphide results for February 2009 received.	0NM	Y
06-Mar-09	706301	Rudolphs Ltd: Discharge to air.	Lower Port Rd, Whangarei	Could not detect possibility of fugitive dust beyond the boundary.	0NM	Y
06-Mar-09	708201	N G Abbott: Discharge to air.	Port Rd, Whangarei	The booth has been repaired and the site is well maintained. CH requested to repair emission control equipment.	1RM	MNC
10-Mar-09	756101	McRaes Land Holdings Ltd and others: Discharge to air.	Lower Port Rd, Whangarei	No offensive odour or possibility of dust from CH's activity.	0NM	Y
10-Mar-09	845301	Regal Pet Food Products: Discharge to air.	Port Rd, Whangarei	No odour at or beyond the property boundary.	0NM	Y
12-Mar-09	875502	C J Silby, T/A Western Blasters: Discharge to air.	Day St, Dargaville	No dust nuisance detected from the site.	0NM	Y
16-Mar-09	505907	Golden Bay Cement: Discharge to air.	Portland Cement Works	Self-monitoring emission test results (January and February 2009) for suspended particulate matter.	0NM	Y
26-Mar-09	706201	Juken Nissho Ltd: Discharge to air.	Northland Mill, Whangatane Drive, Kaitaia	Site visit carried out. Formaldehyde samples were also collected during the visit.	0NM	Y
27-Mar-09	437305	Fonterra Kauri: Discharge to air from operations associated with the dairy manufacturing plant.	Kauri	Site visit carried out.	0NM	Y
30-Mar-09	831902	NZRC: Discharge to air.	Marsden Point Oil Refinery	Self-monitoring results February 2009 received.	0NM	Y

COASTAL ACTIVITIES

Date	Consent	Details	Location	Comment	Code	Comp
02-Mar-09	794001	Whangaroa Marina Trust: 80 Berth Marina.	Kent Bay, Whangaroa	Water quality sampling was undertaken during a major fishing tournament, February 2009. One sample was elevated. CH requested to review sewage policy and report any observed discharge immediately.	0NM	Y

20-Mar-09	1584701	Ontrack - NZ Railways Corp: To remove rail bridges; To place, use and occupy space in the CMA with rail bridges; to remove mangroves adjacent to rail bridges for the purposes of building temporary staging and working platforms.	Whangarei Harbour Tributaries	Initial site visit with contractors at the Limeburners Creek bridge. CH has met requirements for start-up and the contractors were made aware of any perceived issues for upcoming works.	0NM	Y
27-Mar-09	1639201	Gulf Group Marine Brokers Ltd: Floating pontoon, walkway and six piles; capital and maintenance dredging.	Waiarohia Canal, Whangarei Harbour	Structure is in good condition.	0NM	Y
30-Mar-09	1269401	NE, JE, TJ Hilliam: Excavate shipwreck sites.	West Coast Beach, Dargaville	CH failed to provide prior notification.	1FU	MNC

LAND USE CONSENT

Date	Consent	Details	Location	Comment	Code	Comp
18-Feb-09	1594801	Terminus Restaurant & Bar Ltd: Sewer pipeline under the bed of Kaiwaka River	SH 1, Kaiwaka	No odour, ponding or leaks detected.	0NM	Y
24-Feb-09	979601	Marsden Cove Ltd: inland waterway development.	Marsden Bay	The outlet pipes beneath the entrance gate are to be blocked immediately, or a decant installed.	1RM	MNC
24-Feb-09	1700201	Great Northern Land Co Ltd: Subdivision works.	Port Marsden Highway, One Tree Point	Site visit carried out. CH reminded to keep up with dust control and to ensure that discharge complies with RC.	0NM	Y
24-Feb-09	1711501	North Holdings Ltd: Earthworks for industrial subdivision.	One Tree Point	Site visit carried out. CH required to complete perimeter bund as soon as practical.	0NM	Y
24-Feb-09	1915001	Transit NZ: Earthworks for construction of a roundabout.	SH 1, One Tree Point	Silt fences to be closed off to ensure they surround all works areas.	1RM	MNC
24-Feb-09	1939501	Westpoint Management Ltd: Subdivision works.	High St, Whangarei	Repairs required to pond inlet structure and empty the earth bund.	1RM	MNC
24-Feb-09	1975101	Cann Farms Ltd: Placement of peat fill.	One Tree Point Rd, Ruakaka	Immediate repairs required to sediment retention pond side batter. Material placed below pond is to be removed and the area stabilised.	1RM	MNC
24-Feb-09	2099601	TG Paterson Contracting Ltd: Earthworks for peat disposal.	Pyle Rd East, One Tree Point	Exposed areas to be stabilised immediately. A decant is to be installed on the perimeter bund.	1RM	MNC
03-Mar-09	2135701	NZ Transport Agency: Earthworks for passing lane.	SH 1, Hukerenui	Site is well managed and tidy, with appropriate sediment and erosion control measures installed.	0NM	Y

05-Mar-09	1496910	Water Infrastructure Group: Earthworks for storage dam for treated effluent.	Brown Rd, Hakaru	Sediment controls are in place and working. The dam is filling with water and the CH needs to ensure water is treated to a sufficient standard prior to discharge.	0RM	Y
05-Mar-09	1496909	Earth Tec Engineering Pty Ltd: Mangawhai STS.	Mangawhai	Drainage pipe needs to be re-instated to bypass the sediment control pond.	0RM	MNC
06-Mar-09	2024701	GR & LCM Parker: Earthworks for quarry operations.	Gibbons Rd, Kaiwaka	Inspected new overburden site after heavy rain. Sediment retention ponds were performing well.	0NM	Y
06-Mar-09	2123501	Lakeside Business Park Trust: Earthworks.	Marsden Point Rd, Ruakaka	Sediment and erosion measures were installed in an area under development. Site was well managed.	0NM	Y
06-Mar-09	2183001	Rock Solid Holdings: Earthworks.	Denby Heights, Whangarei	Minor technical corrections required at pond outlet structure. Site was well managed.	1NM	MNC
10-Mar-09	1700201	Great Northern Land Co Ltd: Subdivision works.	Port Marsden Highway, One Tree Point	Poor water quality in stormwater pond is to be addressed immediately. CH reminded that discharge to Drain K complies with RC conditions at all times and to keep up with dust control.	1RM	MNC
10-Mar-09	1711501	North Holdings Ltd: Earthworks for industrial subdivision.	One Tree Point	Site visit completed.	0NM	Y
10-Mar-09	979601	Marsden Cove Ltd: Inland waterway development.	Marsden Bay	Drain beneath Stage 2 access road entrance needs to be blocked or a decant installed. CH reminded to keep up with dust control. Progressive stabilisation was going well.	1RM	MNC
10-Mar-09	1915001	Transit NZ: Earthworks for construction of a roundabout.	SH 1, One Tree Point	CH to ensure that sediment controls comply with the approved ESCP and TP90 requirements.	1RM	MNC
10-Mar-09	1939501	Westpoint Management Ltd: Subdivision works.	High Street, Whangarei	Desilting and mulching required as a result of heavy rain. CH to ensure that required sediment controls are installed.	1RM	MNC
10-Mar-09	1975101	Cann Farms Ltd: Placement of peat fill.	One Tree Point Rd, Ruakaka	Sediment controls are to comply with TP90 standards. Removal of previous desilt material is to be undertaken.	1RM	MNC
10-Mar-09	2099601	TG Paterson Contracting Ltd: Earthworks for peat disposal.	Pyle Rd East, One Tree Point	Grass seeding of exposed areas to be completed.	1RM	MNC
11-Mar-09	2243501	RJB Properties: Construction of wetland for s/w treatment and habitat enhancement.	Church Street, Onerahi	Earthworks commenced.	0NM	Y
18-Mar-09	1445501	Transit NZ: Roading earthworks.	SH 1 - Waitiki Landing to Cape Reinga	All works completed to a good standard.	0NM	Y

18-Mar-09	1712501	Far North Land Ltd: Earthworks for industrial subdivision at North Rd, Kaitaia.	North Rd, Kaitaia	All works completed to a good standard.	0NM	Y
20-Mar-09	1496910	Water Infrastructure Group: Earthworks for storage dam for treated effluent.	Brown Rd, Hakaru	Discharge did not meet the RC conditions in terms of visual clarity. Discharge ceased until the water could be sufficiently treated.	2RU	SNC
26-Mar-09	681401	Sime A L & G: Quarry operations.	Otaika Valley Rd, Maungatapere	Quarry is well managed.	0NM	Y
26-Mar-09	904401	E I Brown: Quarry operations	Houto Rd, Titoki	Quarry is well managed.	0NM	Y
27-Mar-09	681701	Western Hills Quarry: Quarry operations.	Maunu Rd, Whangarei	Excavation material from sediment pond to be relocated or covered. Re-fuelling areas need to be cleaned up and weed control measures required on some slopes. Follow-up site visit anticipated during winter season (July or August).	2IM	SNC

DISCHARGES TO WATER OR LAND

Date	Consent	Details	Location	Comment	Code	Comp
08-Dec-08	748701	WDC: Divert & discharge urban stormwater.	Hatea River Catchment	Sediment samples received.	0NM	Y
10-Dec-08	431001	WDC: Discharge stormwater to water.	Awaroa Creek Catchment	Full compliance with RC.	0NM	Y
10-Dec-08	1266201	WDC: Discharge water containing contaminants into CMA.	Dent St, Whangarei	Some of the water quality test results Indicated minor non compliance with RC.	1FM	MNC
13-Jan-09	882901	WDC: Discharge w/water from public toilets to land.	Tutukaka Block Rd, Tutukaka	Water use records for 2007 and 2008 to be submitted by 1 May. Wastewater discharge complied with RC conditions.	0RU	MNC
14-Jan-09	883001	WDC: Discharge w/water from public toilets to land.	Oakura Bay	Water use records for 2007 and 2008 to be submitted by 1 May. Wastewater discharge complied with RC conditions.	0RU	MNC
21-Jan-09	883101	WDC: Discharge w/water from public toilets to land.	Whangarei Heads Rd, Taurikura	Water use records for 2007 and 2008 to be submitted by 1 May. Wastewater discharge complied with RC conditions. WDC to confirm connection to reticulated system and surrender consent.	0RU	MNC
21-Jan-09	883201	WDC: Discharge w/water from public toilets to land.	End of Pataua South Rd	Water use records for 2007 and 2008 to be submitted by 1 May. Wastewater discharge complied with RC conditions.	0RU	MNC

21-Jan-09	736502	J B Harrison - Discharge treated w/water to ground.	Pataua South	Wastewater discharge complied with RC conditions however groundwater chloride test result indicated non-compliance.	1NM	MNC
27-Jan-09	450901	WDC: Discharge treated municipal sewage.	Waipu STS	High faecal coliform count in one groundwater bore. Pounded water in infiltration basins. Dissolved oxygen results not received. Explanation and remedial action requested.	2RU	SNC
04-Feb-09	748901	WDC: Divert & discharge urban stormwater.	Waitaia Stream Catchment	Sediment samples received.	0NM	Y
10-Feb-09	748901	WDC: Divert & discharge urban stormwater.	Waitaia Stream Catchment	Sample results received.	1FM	MNC
10-Feb-09	748701	WDC: Divert & discharge urban stormwater at Hatea River Catchment.	Hatea River Catchment	Sample results received.	1FM	MNC
10-Feb-09	1266201	WDC : Discharge water containing contaminants into CMA.	Dent St, Whangarei	Sample results received.	1FM	MNC
17-Feb-09	1160101	Ringer Farms Ltd: Discharge treated w/w to ground from subdivision.	Galbraith St, Matapouri	High level and discoloured (brown) wastewater in the treatment system. Three-monthly service reports not received since July-08. Maintenance record and service reports were requested by 09/04/09.	1RU	MNC
18-Feb-09	111601	KDC: Discharge treated municipal sewage.	Kaiwaka STS	Ammoniacal nitrogen and faecal coliform levels complied with RC. Stock had access to wetland and disposal area.	0NM	Y
19-Feb-09	400701	FNDC: Discharge treated municipal sewage.	Taipa STS	Water sample results taken at the marsh discharge.	0NM	Y
19-Feb-09	739901	FNDC: Discharge treated municipal sewage.	Hihi STS	The ecoli levels at the downstream sampling site are in non-compliance with the RC conditions. The system is to be upgraded in accordance with the new RC conditions.	1RM	MNC
23-Feb-09	111501	KDC: Discharge treated municipal sewage.	Maungaturoto STS	The plant is currently being up-graded.	0NM	Y
23-Feb-09	740301	WDC: Discharge treated municipal sewage.	Portland STS	Monitoring shows compliance with consent conditions for receiving waters. Discharge volume records not received since May 2007. This is the second request for the data. Required to determine compliance with discharge limits.	0RU	MNC

25-Feb-09	116801	FNDC: Discharge treated municipal sewage.	Kawakawa STS	There was no discharge at the time of inspection, due to dry conditions and low level of the ponds.	0NM	Y
25-Feb-09	859901	FNDC: Moerewa, discharge treated toilet block w/w to land.	Nisbit Park, Moerewa	The STS appears to be operating effectively with no odour or effluent run-off detected.	0NM	Y
25-Feb-09	491901	Brannam Family Trust: Discharge treated motel w/w to land.	Kerikeri Rd, Kerikeri	The aerated w/w plant appeared to be operating effectively with no odour detected in the vicinity of the plant. The CH was requested to repair irrigation pipe leaks in the vicinity of the barked soakage area.	1RM	MNC
25-Feb-09	1693201	PAR Investments (2006) Ltd: Discharge effluent to land.	494b Kerikeri Rd, Kerikeri	The plant has only recently been commissioned. Compliance certificates and as-builts have been requested.	0RM	Y
25-Feb-09	853201	T & P Ness: Discharge treated sewage to water.	Waipapa	Water sampling results received.	0NM	Y
25-Feb-09	1108001	Wiroa Properties Ltd: Discharge treated effluent to land from tavern and factory.	SH 10, Waipapa	Water sample results received. No surface runoff or odour were detected.	0NM	Y
25-Feb-09	1120301	Motatau Marae Trust - Discharge treated w/w to ground.	Henare Rd, Motatau	The aerated wastewater plant appeared to be operating effectively with no odour detected in the vicinity. The dripper array has been relocated to allow for expansion as loading increases.	0NM	Y
02-Mar-09	735701	Minister of Education: Discharge of domestic sewage to subsurface wetland.	Te Horo Primary School, Pitiwai	System was well maintained and operating effectively.	0NM	Y
02-Mar-09	1080101	Minister of Education: Matarau School - Discharge treated w/w to land	Matarau School, Matarau Rd, Kamo	System was well maintained and operating effectively.	0NM	Y
05-Mar-09	898901	Youth for Christ Auckland Inc: Discharge camping ground sillage water to land.	Kauri Mountain Rd	Confirmation of wastewater volumes disposed of at main treatment plant and that the tanks were cleaned out.	0NM	Y
05-Mar-09	513501	Downer EDI Works Ltd: Discharge s/w from industrial site.	Port Rd, Whangarei	Full compliance with RC conditions.	0NM	Y
05-Mar-09	798102	Summit-Quinphos (NZ) Ltd: Discharge s/w from industrial site.	Port Rd, Whangarei	Results showed slightly elevated levels of ammonium.	1FM	MNC
06-Mar-09	827701	Minister of Education: Mangakahia Area School - Discharge treated w/w to land.	Mangakahia	System well maintained and operating effectively.	0NM	Y

06-Mar-09	840701	Minister of Education: - Discharge treated w/w to land.	Maunu Primary School, Austin Rd, Maunu	System was well maintained and operating effectively.	ONM	Y
06-Mar-09	898501	Minister of Education: Discharge treated w/w to land.	Maungatapere School, Maungatapere	System was well maintained and operating effectively.	ONM	Y
06-Mar-09	940401	Maclvor R & C: Discharge treated w/w to land.	Wiroa Rd, Kerikeri	The aerated treatment plant appeared to be operating well. There was no sign of ponding or run-off of effluent from the large soakage field.	ONM	Y
06-Mar-09	1784301	Waipapa Custodians Ltd: Consents associated with retail complex at Waipapa.	Klinac Lane, Waipapa	The aerated treatment plant and associated dripper array appear to be operating well with no odour or effluent run-off observed. The dripper array area has been vegetated with low growing plants to a very high standard.	ONM	Y
06-Mar-09	213201	Rainbow Falls Sewerage Association: Discharge treated w/w.	Waipapa Rd, Kerikeri	A visual inspection revealed that the soakage field serving the system does not appear to operate effectively during wet weather. Further testing is required.	UFM	MNC
06-Mar-09	345201	Frewen S R & J K: Discharge treated w/w to land.	Pagoda Lodge, Pa Rd, Kerikeri	The STS appears to be operating effectively with no odour or effluent run-off observed. The loading on the system is reported to be low.	ONM	Y
10-Mar-09	913001	WDC: Discharge w/w from public toilets to land.	Waipu Caves Rd	Water use records for 2007 and 2008 to be submitted by 1 May.	ORU	MNC
10-Mar-09	272401	Ota Point Effluent Society Inc: Discharge treated communal sewage to coastal waters.	Ota Point, Whangaroa	The water samples taken from the final POD indicated that faecal coliform and suspended solids results complied with RC conditions. The ultra violet efficiency was working under the effective limit.	ONM	Y
11-Mar-09	898401	Minister of Education: Discharge treated w/w to land	Kaingaroa School	System was well maintained and operating effectively.	ONM	Y
12-Mar-09	940301	Maungakaramea School Board of Trustees: Discharge treated w/w to land.	Maungakaramea Primary School, Maungakaramea	System was well maintained and operating effectively.	ONM	Y
13-Mar-09	201501	Minister of Education: Discharge treated w/w to water.	Tauraroa Area School	System was well maintained and operating effectively.	ONM	Y
17-Mar-09	377501	FNDC: Discharge treated municipal sewage - Ahipara	Ahipara STS	Water samples from the downstream site were within RC limits.	ONM	Y
17-Mar-09	377501	FNDC: Discharge treated municipal sewage - Ahipara	Ahipara STS	Water samples from the downstream site were within RC limits.	ONM	Y

17-Mar-09	383901	FNDC: Discharge treated municipal sewage.	Kohukohu STS	The water sample results from the marsh outlet received.	0NM	Y
18-Mar-09	489601	Houhora Big Game Fishing Club Inc: Discharge treated w/w to land.	Monkey Point, Houhora Harbour	Water sample results did not indicate elevated ecoli levels in the groundwater bores. There was no discharge from the stormwater pipe to the foreshore.	0NM	Y
18-Mar-09	366601	KDC: Discharge treated municipal sewage - Dargaville	Dargaville STS	The wastewater treatment system appears to be functioning well.	0NM	Y
18-Mar-09	110201	KDC: Discharge treated municipal sewage - Te Kopuru	Te Kopuru STS	The wastewater treatment system appears to be functioning well.	0NM	Y
20-Mar-09	508701	KDC: Discharge treated sewage - Maungaturoto Railway Settlement	Maungaturoto Railway Settlement	The wastewater treatment system appears to be functioning well.	0NM	Y
25-Mar-09	1047801	P & J Jurisich & Horwath Trustee Services - discharge of treated sewage effluent to land.	Kerikeri Rd, Kerikeri	The aerated wastewater plant appeared to be operating well with no odour detected. Additional dripper lines had been added to the disposal area.	0NM	Y
26-Mar-09	241701	FNDC: Discharge treated municipal sewage - Kaikohe	Kaikohe STS	The water sample results from the downstream sample site.	0NM	Y
26-Mar-09	472501	Whangaroa Maori Trust Board: Discharge treated communal sewage to land.	Waitaruke	Maintenance reports received for the period 5/12/07 - 3/3/09.	0RM	MNC

FARM DAIRY EFFLUENT

Monitoring Non-Consented (MNC)

Date	Consent	Details	Location	Comment	Code	Comp
25-Feb-09	801057	Kernot & East Farm Partnership: FDE 8789	Pouto Rd, Tikinui	Small leak in pond embankment to be repaired by no later than 30 April 2009.	1IU	FUS
25-Feb-09	800817	Milich Farms Ltd: FDE 8017	Cole Rd, Te Maire	Irrigator working well. No discharge within 20m of water.	0NR	FUS
25-Feb-09	800831	Kneebone K T R: FDE 8057	Redhill Rd, Oturei	Ditches were cleaned out. Additional storage had been constructed (still undersized). No discharge. Irrigator service required.	1IU	FUS
25-Feb-09	800852	Sutich J S & M C: FDE 8106	West Coast Rd, Te Kopuru	No discharge. All pond levels were down and irrigator was in use.	0NR	FUS
25-Feb-09	801049	Harvest Farms Ltd: FDE 8769	Pouto Rd, Tatararaki	Barrier ditch full and close to discharge. The irrigator had not recently been used.	1IU	FUS
25-Feb-09	801071	Pouto Topu ATrust: FDE 8823	Opuna Rd, Pouto	Storage pond level down. No discharge. Required works have been completed.	0NR	FUS

16-Mar-09	800326	Roberts C D & A M Family Trust: FDE 1624	SH 1, Waipu	Pit waste reticulated. Evidence of sump overflow.	11U	FUS
16-Mar-09	800327	Roberts C D & A M Family Trust: FDE 1625	SH 1, Waipu	Over application and overland flow from irrigator to water. Effluent had discharged to water from herd home area. No contingency storage.	2IU	FUS
16-Mar-09	800412	J K D Farms Ltd: FDE 2513	Marshville Rd, Maungakaramea	Pond level down. Mains pump broken. Power pump in use. No evidence of over-application. System sub-standard.	1IU	FUS
16-Mar-09	800364	Thomson R J & W M: FDE 1924	Paparoa-Oakleigh Rd, Tauraroa	No discharge. No stormwater diversion. Required works have been completed.	1IU	FUS
17-Mar-09	800594	Paulsen L R: FDE 4001	Tinopai Rd, Tinopai	No discharge. Additional area for land application had been reticulated.	0NR	FUS
23-Mar-09	800126	Bridgethorne Holdings Ltd: FDE 505	SH 10, Kerikeri	Upgrade recommended.	1IU	FUS
23-Mar-09	800796	Campbell N J & M J & J S: FDE 7478	Ruapekapeka Rd, Towai	Discharge from the milking pit is now reticulated to ponds. Stormwater diversion inadequate, still allows untreated effluent into drain. Digger on site to re-build pond wall.	1IU	FUS
30-Mar-09	802704	M J & L D Griffiths: FDE 8388	Waitapu Rd, Aranga	Permitted activity. Modifications required.	1IU	FUS

FARM DAIRY EFFLUENT Monitoring Consented (MCO)

Date	Consent	Details	Location	Comment	Code	Comp
23-Feb-09	1049601	CMJ Trading Trust: FDE 8684	Arapohue Rd, Dargaville	Gross pollution by discharge from treatment system and stormwater bypass. Urgent action required.	2IU	FUS
23-Feb-09	1173201	Ciuan Farms Ltd: FDE 8657	Arapohue Rd, Arapohue	Earlier non-compliance due to excessive solids in pond and disposal of reject milk to system. Pond one will be cleaned annually. Contingency plan for milk disposal required.	1IU	FUS
23-Feb-09	1049601	CMJ Trading Trust: FDE 8684	Arapohue Rd, Dargaville	Gross discolouration of receiving waters and water quality test results grossly outside consent limits. Urgent action required.	2IU	FUS
23-Feb-09	1172301	Blitvic I N: FDE 8750	Turiwiri West Rd, Turiwiri	Sump walls had been raised. Land application is planned. Potential for entrance/exit race to discharge to water.	1IU	FUS

24-Feb-09	912801	Riponui Farms Ltd: FDE 7083	Riponui Rd, Riponui	Discharge volume exceeded due to unblocking of discharge pipe and sudden lowering of pond levels. Gross pollution of receiving waters.	2IU	FUS
24-Feb-09	924001	Dawson P R & V P: FDE 7434	Barnes Rd, Towai	Pump failure had caused earlier non-compliance. Screen fitted to sump.	0NR	FUS
24-Feb-09	1218701	Harrison G R G & L C: FDE 7438	Smit Rd, Hukerenui	Pond one had been cleaned. Pond two to be cleaned and enlarged by no later than 30 April 2009.	1IU	FUS
25-Feb-09	1215301	Zwaans T & L Family Trust: FDE 8051	Pouto Rd, Te Kopuru	Very low dilution in receiving waters. Owner to consider land application.	1IU	FUS
11-Mar-09	879701	Pinny M J & C M: FDE 852	Picadilly Rd, Kaikohe	Inadequate system. Upgrade required.	2IU	FUS
11-Mar-09	973401	Husseys Partnership Ltd: FDE 842	Mataraua Rd, Kaikohe	Ponds had been cleaned. Pit waste pipe had been repaired. Stormwater control to be done.	1IU	FUS
11-Mar-09	1046601	Kaikohe Downs Ltd: FDE 867	SH 12, Kaikohe	The ponds had been cleaned. The feedpad pond was solid. No stormwater control.	1IU	FUS
11-Mar-09	1216401	Wilson W C G: FDE 3315	Wilson Rd, Parakao	Stormwater diversion had been installed.	0NR	FUS
11-Mar-09	1245601	Brown P L Sharemilking Ltd: FDE 3409	McCardle Rd, Titoki	Abatement notice was complied with.	2IU	FUS
11-Mar-09	933901	Pinny M J: FDE 855	Mangakahia Rd, Kaikohe	Major upgrade required.	1IU	FUS
11-Mar-09	1245801	Brown P L Farms Ltd: FDE 3436	Mangakahia Rd, Titoki	Maintenance required. Stormwater diversion system leaked untreated effluent within 20metres of water.	2IU	FUS
16-Mar-09	899801	Thomson R J & W M: FDE 2620	Mangapai Rd, Mangapai	New pad discharged to system. Pad discharge not consented. Improvements required.	1IU	FUS
16-Mar-09	952201	Millbrook Farm Ltd: FDE 1711	Helmsdale Rd, Waipu	Stormwater control at dairy and wintering barns required by 30 April 2009. Major upgrade agreed if significantly non-compliant 2009/2010.	1IU	FUS
16-Mar-09	1099501	Buisman R: FDE 2522	Purvis Rd, Maungakaramea	No stormwater control at the feedpad and or silage pad. Stormwater bung at the dairy does not seal well.	0NR	FUS
16-Mar-09	1176901	Udderway Farming Ltd: FDE 1802	South Rd, Waipu	No discharge to roadside drain at time of inspection. Low receiving waters may require the adoption of land application.	1IU	FUS
16-Mar-09	1226201	Gordon P & T Ltd: FDE 1729	Rosyth Rd, Waipu	Feedpad pond had been cleaned. Stormwater control will be upgraded and a second pond re-instated by 30 April 2009.	1IU	FUS
				Upgrade agreed by 28 February 2010.		

17-Mar-09	1046001	Hickey C C & K M: FDE 4129	Oparakau Rd, Matakohe	Pond two leak repaired. A feedpad is planned. Owner advised that additional treatment would be required.	ONR	FUS
19-Mar-09	948801	Bulfin P E: FDE 4438	Rehia Rd, Rehia	Fourth pond built. Ponds one and two require a full clean by 30 April 2009. Stormwater control not used.	1IU	FUS
19-Mar-09	955801	Flood P T: FDE 4230	SH 12, Ruawai	Land application system commissioned. Feedpad will be moved. Discharge to drain and to water from damaged mains had been repaired.	1IU	FUS
19-Mar-09	1210601	Gent & Flood Family Trust: FDE 4475	SH 12, Ruawai	Storage ditches were full. Stormwater diversion at the feedpad required maintenance. Drains for exit race effluent blocked off. Risk of non-compliance during wet weather.	1IU	FUS
19-Mar-09	1290201	Dreadon L R & R E: FDE 4445	Ringrose Rd, Rehia	Ponds cleaned. Effluent being reticulated to larger first pond. Stormwater control being installed.	ONR	FUS
19-Mar-09	1311101	Brich T I: FDE 4329	Hodgson Rd, Ruawai	Pit waste pump installed and operating.	ONR	FUS
19-Mar-09	967901	Bellamy M C & S L: FDE 4435	Rehia Rd, Rehia	Ponds cleaned. Stormwater control at dairy and wintering barns to be upgraded.	1IU	FUS
23-Mar-09	934501	Pabirowski I P: FDE 7459	Oetzman Rd, Towai	Broken pipe repaired. Transfer pipe from pond one blocked.	1IU	FUS
23-Mar-09	881801	Going R S: FDE 7510	Marlow Rd, Maromaku	Major upgrade completed. Two new ponds and stormwater control installed.	ONR	FUS
23-Mar-09	1171101	Glenhope Farms Ltd: FDE 7499	Rusk Rd, Hikurangi	No over application via the irrigator. Required maintenance done.	1IU	FUS
23-Mar-09	1300601	Simpson C L: FDE 7595	Taikirau Rd, Maromaku	Stormwater control not used. No discharge via the stormwater. Ponds discharge caused discolouration in the receiving waters.	1IU	FUS
23-Mar-09	921501	Highrisings Farm Partnership: FDE 541	Waiaite Rd, Okaihau	New system completed. Three ponds plus trickle irrigation to bush. Can meet "permitted activity" criteria.	ONR	FUS
25-Mar-09	948401	Groome A: FDE 8152	Oturei Settlement Rd, Oturei	Stormwater control and maintenance agreed by no later than 30 April 2009.	1IU	FUS
30-Mar-09	876501	Twin Coast Partnership Ltd: FDE 8252	Waihue Rd, Waihue	Additional pond capacity agreed by no later than 30 June 2009.	1IU	FUS
30-Mar-09	949601	Pendre Farms Ltd: FDE 8383	Waitapu Rd, Aranga	Major upgrade underway. Effluent irrigated to land.	1IU	FUS

30-Mar-09	1097601	Lyford Farms Ltd: FDE 8348	SH 12, Dargaville	Pipe unblocked which caused high volume discharge. Stormwater control had been installed. Ponds below recommended capacities. Upgrade required.	2IU	FUS
30-Mar-09	1137601	Russek Ltd: FDE 8275	Waimata Rd, Waihue	Ponds undersized. Upgrade required by no later than 1 June 2009.	2IU	FUS
30-Mar-09	1219801	Murphy I W & N J: FDE 8410	Proud Rd, Aranga	The required maintenance had been done.	0NR	FUS
30-Mar-09	1245501	Murlun Farm Ltd: FDE 8293	SH 12, Mamaranui	Maintenance good. Very low dilution in the receiving waters.	1IU	FUS
30-Mar-09	1305701	Marshall Dairy Enterprises Ltd: FDE 8420	Marlborough Rd, Tutamoe	Second pond leaked. Upgrade required.	2IU	FUS
30-Mar-09	1313501	Lyford Farms Ltd: FDE 8333	Waihue Rd, Mamaranui	Major maintenance agreed.	1IU	FUS

WATER TAKES

Date	Consent	Details	Location	Comment	Code	Comp
02-Mar-09	2178001	WDC: Bore construction of 3 bores.	Rama Rd & Marsden Point Rd, Ruakaka	Bore logs received. Information provided on the bore logs was incomplete.	0RM	MNC
02-Mar-09	514001	Fonterra Maungaturoto: Water take.	Maungaturoto Dairy Factory	No water abstraction during January.	0NM	Y
02-Mar-09	1064901	Landcorp Farming Ltd: Groundwater take from four bores.	Sandhills Rd, Ahipara	Water use records received for the period June 2007 to Jan 2009. There was no separate water use records for each of the bores and no static or pumping water level information recorded.	1RM	MNC
04-Mar-09	831905	NZRC: Take for the control of groundwater levels within the refinery site.	Marsden Point	The groundwater report for February 2009 was submitted.	0NM	Y
05-Mar-09	2069701	Waikura Landscaping Services Ltd: Bore construction.	91A Wairahoraho Rd, Maitai Bay	Bore log received.	0NM	Y
05-Mar-09	2263001	H J & M A Burkhardt: Bore construction.	Korora St, Ahipara	Bore log received.	0NM	Y
05-Mar-09	495001	Far North Apparelmaster Ltd: Groundwater take for commercial laundry.	Rankin St	Water use records received for the period January 2008 to December 2008.	0NM	Y

05-Mar-09	623207	Dew Drop Properties Ltd: To take groundwater from two existing bores.	Otehei Bay	Water use records received for February 2009.	ONM	Y
06-Mar-09	492601	Whananaki Holiday Park 2006 Ltd: Groundwater take for camping ground water supply.	Whananaki North Rd, Whananaki	Water use records received for 2008/2009 season.	ONM	Y
10-Mar-09	1816705	Embar Holdings Ltd: Bore construction.	Rawhiti Rd, Russell	Bore log received.	ONM	Y
10-Mar-09	2053301	Luca Vista Holdings Ltd: Bore construction.	Heath Rd, Waiharara	Bore log received.	ONM	Y
10-Mar-09	188101	WDC: Groundwater take for public water supply.	Stonehaven Drive, Maungakaramea	Water use records received for February 2009.	ONM	Y
10-Mar-09	213501	McNaughton D M: Groundwater take for horticulture.	Ngunguru Rd, Glenbervie	Water use returns received.	ONM	Y
10-Mar-09	289601	Hutchinson W H: Groundwater take for horticulture.	Ngunguru-Maruata Rd, Glenbervie	Water use returns received.	ONM	Y
10-Mar-09	864201	WDC: Groundwater take for public water supply.	Stonehaven Drive, Maungakaramea	Water use records received for February 2009.	ONM	Y
11-Mar-09	216301	Huanui Orchards: Take for irrigation of crops.	Ngunguru Rd, Glenbervie	Water use returns received for the period November 2008 to February 2009.	ONM	Y
11-Mar-09	359301	Abercrombie G & G R: Take for irrigation of crops.	Pipiwai Rd, Ngaratunua	Water use returns received for 2008/2009.	ONM	Y
13-Mar-09	240601	Cottee B J, Stevens C, Callas S, Anson G: Take for irrigation of crops.	SH 14, Maungatapere	The flow was estimated at 100 l/s. The required continuation flow is 18 l/s.	ONM	Y
16-Mar-09	296001	WDC: Take for public water supply.	Poroti	The continuation flow exceeded 50 l/s.	ONM	Y
16-Mar-09	758201	KDC: Take for public water supply.	Rd Reserve, SH 1, Piroa Stream	The flow measured in the Piroa Stream was 58.1 l/s. The required continuation flow is 11 l/s.	ONM	Y
17-Mar-09	774301	Harvey A S & L A M: Take for irrigation and pasture.	Redhill, Dargaville	Water use returns received for 2009.	ONM	Y
20-Mar-09	1955401	C Palmer: Bore construction.	Galbraith Street, Matapouri, Whangarei	Checked bore head conditions and access to water level.	ONM	Y
24-Mar-09	740601	WDC: Dam & take for public water supply.	Prescott Rd, Ruakaka	WDC is maintaining the required continuation of flow of 5 l/s.	ONM	Y

24-Mar-09	353301	WDC: Take for domestic water supply.	Mangapai Rural Settlement Zone	The flow in the Tauraroa River was greater than 29 l/s. The required continuation flow is 5.5 l/s. WDC is submitting water use records on a weekly basis.	ONM	Y
24-Mar-09	505901	Golden Bay Cement: Take for cooling, dust control and farm supply.	Portland	The estimated flow rate at the weir was 347 l/s. The required continuation flow is 30 l/s.	ONM	Y
24-Mar-09	758201	KDC: Take for public water supply.	Road Reserve, SH 1, Piroa Stream	The flow measured in the Piroa Stream was 37.5 l/s. The continuation flow is 11 l/s.	OMN	Y
26-Mar-09	517401	M J Pinny: Dam and take for pasture irrigation.	Mangakahia Rd, Kaikohe	The dam outflow measured at the downstream weir was 19l/s. The required continuation flow is 12l/s.	ONM	Y
26-Mar-09	186201	FNDC: Groundwater take for public water supply.	Monument Hill & Squire Springs	A flow of 1.5l/s was measured at Squires Spring. The required continuation flow is 1l/s.	ONM	Y
26-Mar-09	267101	Red Cone Orchard Key C B, C D & J: Groundwater take for horticulture.	Three Mile Bush Rd, Kamo	Water use returns received.	ONM	Y
26-Mar-09	410901	FNDC: Take for public water supply.	SH 1, Kaikohe	The flow in the Wairoa River was estimated to be greater than 20l/s. The required continuation flow is 8.5l/s.	ONM	Y
27-Mar-09	1103601	WDC: Water take for public toilets.	Whananaki North	Water use records for 2007/08 season received.	ONM	Y
27-Mar-09	1103801	WDC: Groundwater take for public toilets and associated discharge to land.	Sandy Bay	Water use records for 2007/08 season received.	ONM	Y
27-Mar-09	1103901	WDC: Groundwater take for public toilets.	Taiharuru	Water use records for 2007/08 season received.	ONM	Y
30-Mar-09	1811001	WDC: Installation of a bore.	Sime Rd, Ruakaka	Bore logs received. The required information is incomplete.	ORM	MNC
30-Mar-09	1496914	Earth Tech Engineering Pty Ltd: Take and discharge groundwater.	Mangawhai	All bores have been decommissioned. Work on this site is complete.	ONM	Y
31-Mar-09	1954701	G Bradbury: Bore construction.	Sawyer Rd, Mangonui	Checked the bore head construction and access to water level measurements.	ONM	Y
31-Mar-09	1986401	S M & P F Gough: Bore construction.	Te Maire Rd, Dargaville	Checked the bore head conditions and access to water level.	ONM	Y
31-Mar-09	2011201	M & J Hirsch: Bore construction.	Cove Rd, Waipu Cove	Checked the bore head conditions and access to water level.	ONM	Y

31-Mar-09	2013501	D E & M D Adnitt: Bore construction.	Scarrott Rd, Te Kopuru	Checked the bore head conditions and access to water level.	0NM	Y
31-Mar-09	2021901	K Bradley: Bore construction.	SH 12, Turiwiri	Checked the bore head conditions and access to water level.	0NM	Y
31-Mar-09	2026101	Williamson Agriculture Ltd: Bore construction.	Bee Bush Rd, Dargaville	The bore is not protected from stock.	1RM	MNC
31-Mar-09	2027901	A & N Harvey Family Trust: Bore construction.	West Coast Rd, Dargaville	The bore is not protected from stock.	1RM	MNC
31-Mar-09	2032301	I J & S M Beattie: Bore construction.	Te Kowhai Rd, Ruawai	Checked bore head conditions and access to water level.	0NM	Y
31-Mar-09	2042801	FNDC: Construction of two bores.	Monument Rd, Kaikohe	The bore heads are at ground level but appropriately sealed. The bore is not isolated from stock.	1RM	MNC
31-Mar-09	2088501	A D McLean: Bore construction.	Pouto Rd, Pouto	Checked the bore head construction and access to water level measurements.	0NM	Y
31-Mar-09	350401	Hutchinson W H: Dam & take for irrigation of crops.	Huanui Orchards, Glenbervie	Water use returns received for 2008/09.	0NM	Y
31-Mar-09	209501	Ngaere Enterprises Ltd: Take for crops and irrigation.	Hukerenui Rd, Hikurangi	Flows in the Waitutu River have not fallen below the required continuation flow of 200l/s.	0NM	Y
31-Mar-09	234301	Eagles MA & JA: Take for irrigation of crops.	Newton Rd, Maungatapere	Water use returns received for 2008/2009.	0NM	Y
31-Mar-09	501401	A B Kevey & L J Christie: Take for pasture irrigation.	Mangakahia Rd	Water use returns received for 2008/2009	0NM	Y
31-Mar-09	882902	WDC: Groundwater take for public toilet water supply.	Tutukaka Block Rd, Tutukaka	Water use returns received for 2007/2008	0NM	Y
31-Mar-09	883202	WDC: Groundwater take for public toilets.	End of Pataua South Rd	Water use returns received for 2007/2008	0NM	Y
31-Mar-09	923702	WDC: Groundwater take for public toilets.	Whangaumu Bay	Water use returns received for 2007/2008	0NM	Y
31-Mar-09	1103701	WDC: Discharge to land and groundwater take for public toilets.	Pataua North	Water use returns received for 2007/2008	0NM	Y

SOE MONITORING – Air, Lakes and Water

Date	MNC	Project	Location	Comment
05-Mar-09	802715	Ody Rd, sulphur dioxide monitor	Ody Rd, SO2 monitor	Sulphur dioxide results for February 2009 comply with National Environmental Standards (Air Quality).
11-Mar-09	802032	Aupouri Lakes	Aupouri Peninsula	Routine water quality monitoring of Lakes: Carrot, Heather, Ngatu, Ngakapua North, Ngakapua South, Rotoroa, Rotokawau, Waiparera, Waihopo, Waipara, Morehurehu, Te Kahika, Ngakeketa North, Waiporohita. Most lakes were stratified. Unable to sample Lake Te Paki due to DOC staff unavailability.
18-Mar-09	801302	Regional Water Quality Monitoring Network - North		Routine monthly water quality monitoring carried out on the Mangamuka, Victoria, Awanui, Kaeo and Oruru Rivers.
18-Mar-09	801338	Regional Water Quality Monitoring Network - Eastern		Monthly water quality sampling of Waitangi, Waipapa, Kerikeri, Waiharakeke, Waiotu, Ngunguru, Hatea and Whakapara Rivers and two sites on Mangahahuru Stream.
18-Mar-09	801303	Regional Water Quality Monitoring Network - Western		Monthly water quality sampling of Kaihu, Waipoua, Waimamaku, Punakitere, Utakura, Mangakahia and Opouteke Rivers. Water clarity good at Kaihu, Waipoua, Mangakahia and Opouteke.
18-Mar-09	801314	Regional Water Quality Monitoring Network - Southern		Routine water quality monitoring of Ruakaka, Hakaru, Manganui, Mangere and Waipao Rivers, Paparoa Stream and two sites on the Waiarohia Stream. The conductivity at the Paparoa Stream site has returned to normal.
23-Mar-09	802033	Pouito Lakes	Pouito Peninsula	Routine water quality monitoring of Lakes Humuhumu, Kanono, Kahuparere, Kapoai, Karaka, Mokeno, Rototuna, Swan, Wainui and Whakaneke. Lakes Kapoai and Wainui had very poor water clarity and low oxygen levels in bottom waters.
24-Mar-09	801320	Lake Omapere Monitoring and Management	Lake Omapere	Routine water quality sampling of Lake Omapere and the outlet. Blue-green algal counts low however toxin levels are above detection limits. Lake very turbid.
25-Mar-09	802739	Mangere Stream Water Quality Investigation		Routine water quality sampling of six sites in the Mangere catchment to investigate poor water quality.
26-Mar-09	801427	Summer recreational bathing water quality surveys.		Investigation into the source of high bacterial levels in the Kanekane Stream (Coopers Beach). Results were much lower than usual (E.coli less than 550/ml). Further samples will be taken to check results.
31-Mar-09	700115	Waipu Catchment Water Quality Project.	Waipu	Routine water quality monitoring of the Waipu catchment. Water clarity and dissolved oxygen was good at most sites.

ENVIRONMENTAL INCIDENTS

Date	ICE No.	Description	Location	Comment	Code
01-Mar-09	18197	Smoke nuisance.	Atkins Rd, Portland	The fire had been extinguished at the time of contacting the incident reporter.	1IR
02-Mar-09	18199	Contingency pond overflowed due to air lock in effluent pipe.	Kauri	Once discovered, immediate action was taken to cease discharge. Additional irrigation areas set up to reduce the volume of wastewater.	1NR
02-Mar-09	18200	Spraydrift.	Sandford Rd, Ruakaka	Incident investigation confirmed minor non-compliance with the RAQP.	1WR
03-Mar-09	18202	Strong odour from chicken farm.	Whangarei Heads, Whangarei	Received odour management plan as requested. It is believed that odour from the activity will be reduced after taking series of actions mentioned in the plan.	1RR
03-Mar-09	18207	Fire with alleged toxic fumes/smoke.	Takahue Rd, Kaitaia	Investigation is continuing.	1FU
03-Mar-09	18208	Alleged dust nuisance from earthworks.	Corks Rd, Tikipunga	Dust impact from adjacent subdivision at Denby Heights is not offensive or objectionable. No breach of RC conditions.	UNR
03-Mar-09	18261	Deposit material from Calla lilly growing activities.	Hornblow Rd, Matakoho	The material being dumped from the flower growing operation is made up of potting mix and vegetation.	ONR
04-Mar-09	18211	Cleaning of a watercourse.	Matapouri Rd, Tutukaka	Works should meet the permitted activity criteria of Section 27.3 of the RWSP. The relevant rules were sent to the landowner for future reference.	OIR
04-Mar-09	18209	Odour nuisance.	SH 10, Waipapa	Investigation is continuing. Waiting for further details from the incident reporter.	UFU
04-Mar-09	18210	Smoke nuisance from rubbish burning.	Otaika Valley Rd, Otaika	Site visit could not confirm offensive smoke beyond the property boundary. Person responsible was burning dry branches and untreated wood. No action needed.	ONR
04-Mar-09	18213	Subdivision works commenced prior to approval.	Kiripaka Rd, Whangarei	Investigation is continuing.	1FU
04-Mar-09	18214	Smoke nuisance.	Hilltop Rd, Hakaru	Person responsible was requested to extinguish fire.	1RU
04-Mar-09	18217	FDE discharge from irrigator.	Redhill Rd, Oturei	Farmer undertook to cease discharge from irrigator immediately.	1IU
04-Mar-09	18218	Rocks from a consented structure have fallen and blocked a stream.	Omapere	The caller reported that a small stream, regularly blocked by sand and logs, is further obstructed with spalls from a consented seawall. A site visit is programmed.	UFU

04-Mar-09	18220	Sewage pumpstation overflow.	Dip Rd, Kaeo	Pipework was replaced on a broken section. Minor spill of untreated sewage entered the Kaeo River.	1NR
05-Mar-09	18223	Dust nuisance.	Pyle Rd East, Ruakaka	Landowner contacted and inspection scheduled with contractor to discuss mitigation.	1FU
05-Mar-09	18226	Discharge to stream.	SH 12, Aranga	The discharge, which cleared quickly, was not milk as first thought but caused by someone cleaning a drain. The offender had been spoken to by the incident reporter and no further action was required.	1NR
06-Mar-09	18225	Alleged illegal concrete structure on beach.	Moturoa Island, BOI	A 1.8m wide dingy ramp has been constructed across Boulder Bay beach using a gabion mattress basket, rocks and concrete. Further investigation is required.	2FU
06-Mar-09	18227	Sewage discharge.	Butter Factory Ln, Whangarei	Sewage overflow following heavy rain. Awaiting final report and volumes.	2RU
07-Mar-09	18228	Smoke nuisance.	North Rd, Kaitaia	Fire was going out at the time of call.	1NR
07-Mar-09	18229	Smoke nuisance.	Williams St, Kaitaia	Call put through to FNDC to follow up.	1NR
07-Mar-09	18231	Smoke nuisance.	Maunu Rd, Whangarei	Minor smoke nuisance was confirmed during the site visit. Further follow-up action was requested to be undertaken by WDC to ensure a spa heater on the property has appropriate consent	1IR
07-Mar-09	18236	Odour from dairy farm.	McCathie Rd, Ruakaka	Investigation is continuing.	1FU
08-Mar-09	18237	Oil spill in carpark.	Hannah St, Whangarei	Investigation is continuing.	1FU
09-Mar-09	18230	Waste oil discharge to stormwater system.	Robert St, Whangarei	Investigation is continuing.	1FU
09-Mar-09	18238	Sewage surcharge reported.	Swan Ave, Hikurangi	Sewage spill to stream from blocked line. Awaiting final report.	1RU
09-Mar-09	18239	Earthworks commenced prior to engineering plan approval.	Monk Rd, Oakleigh	Investigation is continuing.	1FU
09-Mar-09	18240	Smoke nuisance.	Western Hills Dr, Whangarei	Site visit could not locate the fire in the area. No action needed.	0NR
09-Mar-09	18243	Smoke nuisance.	Kara Rd, Whangarei	Investigation is continuing.	1FU
10-Mar-09	18241	Mangroves removed.	Pahi, Kaipara	Investigation is continuing.	1FU
10-Mar-09	18242	Illegal boat ramp.	Ngakakahi, Te Hapua	Investigation is continuing.	1FU
10-Mar-09	18244	Alleged sewage discharge in CMA.	Rawhiti	Brown slime was observed on the foreshore. A site visit will be undertaken.	UFP
10-Mar-09	18245	Smoke nuisance.	Hone Heke Rd, Kerikeri	The fire was extinguished by the time of the visit. The incident reporter was requested to report any further fires.	URR

11-Mar-09	18247	Alleged unconsented drainage works.	Martin Rd, Opahi	The farmer was informed that a RC would be required as the proposed drain would have lowered the natural water level of a large indigenous wetland.	0WR
11-Mar-09	18249	Smoke nuisance.	Brickworks Ln, Kamo	Could not locate the fire during the site visit.	0NR
11-Mar-09	18251	Offal disposal causing offensive odour.	Tara Rd, Mangawhai	Little odour at the time of inspection, alleged offender asked to be mindful of neighbours when producing fertilisers.	1NR
11-Mar-09	18252	Discharge of blue green algae at concentrations where there are potential adverse effects.	Kaitaia Sewage Treatment System	Further monitoring is being undertaken by FNDC contractors, including monitoring at a downstream watertake.	1RU
11-Mar-09	18255	Sedimentation in stream.	Brown Rd, Kaiwaka	Earthworks site are now using chemical treatment to reduce the sediment concentration of the discharge water.	2RR
12-Mar-09	18254	Volume of earthworks allegedly outside permitted activity rules.	Kerr Rd, Parua Bay	Earthworks well below 5000m ³ and are a permitted activity.	0NR
12-Mar-09	18256	Possible sewage contamination of stream.	Hukerenui	Water samples do not indicate sewage contamination.	UFU
12-Mar-09	18257	Oil spill.	Carruth St, Whangarei	Working with WDC to determine whether there is an issue.	1CR
13-Mar-09	18258	Sediment laden discharge from forestry clearfelling.	Komiti Rd, Tinopai	Oil cleaned up using absorbant material.	1FU
13-Mar-09	18259	Concern over dust and water pollution from operations at Marsden Pt wharf.	Reotahi, Whangarei Heads	Investigation is continuing.	1FU
13-Mar-09	18264	Issues with drain cleaning in forestry land.	Tangowahine Valley Rd, Tangowahine	Neighbours were to contribute 50% towards maintaining drain to alleviate drainage issue on reporter's property.	0NR
14-Mar-09	18260	Commercial premises causing smoke nuisance with rubbish fire.	SH 14, Maungatapere	The person responsible for incinerating prohibited materials was informed of what materials may be burnt and the requirement to avoid smoke nuisance.	2WR
14-Mar-09	18262	Discolouration of river due to upstream construction works.	Hakaru	Chemical treatment is now being used to treat the sediment laden water. There should be no further adverse effects.	1RR
17-Mar-09	18265	Spraydrift.	Eagles Way, Coopers Beach	Investigation is continuing.	1FU
18-Mar-09	18267	Smoke nuisance.	Parakiore Rd, Ruatangata	Site visit could not confirm smoke nuisance as reported. No action needed.	0NR

18-Mar-09	18268	Dust nuisance.	Memorial Dr, Whangarei	Could not confirm dust nuisance.	ONR
18-Mar-09	18274	Wreckage from sunken vessel left in the CMA.	Okura Bay, Totara North	Investigation is continuing.	1FU
18-Mar-09	18282	Allegation that boat slipway is being used for hull scraping/sanding without containment.	Matauwahi Bay, Russell	The owners of the slipway were informed that no discharge of contaminants to the CMA is allowed. Follow-up visits are planned to determine compliance.	UWP
19-Mar-09	18269	Spraydrift from helicopter spraying operation.	Franklin Rd, Papatooa	The effects of spray on neighbour's property cannot be determined immediately. The investigation is continuing.	0FP
19-Mar-09	18270	Alleged sewage discharge to farm property.	Access Rd, Ruawai	Vegetable washings from kumara processors dumped on a neighbour's property by mistake.	ONR
19-Mar-09	18271	Algal bloom.	Te Uenga Bay, BOI	The substance observed in the water appeared to be a natural algal bloom.	NNR
19-Mar-09	18272	Goat carcass below MHWS.	Te Ngaire Bay	The decaying goat was removed from the CMA and buried.	2CR
19-Mar-09	18273	Smoke nuisance.	Port Rd, Whangarei	Unable to investigate during burning.	UNR
19-Mar-09	18276	Earthworks activity may impact on freshwater spring.	Factory Ln, Hikurangi	Investigation is continuing.	1FU
19-Mar-09	18277	Dust nuisance.	Kamo Rd, Whangarei	Minor dust nuisance was confirmed during the site visit. The person responsible agreed to use water to minimise dust.	1IR
19-Mar-09	18279	Dead stock in waterway.	Flagstaff Tce, Waipu	Investigation is continuing.	1FU
19-Mar-09	18284	Smoke nuisance.	Whangaroa	An enquiry as to why NRC allows large fires that cause smoke nuisance. A response letter was sent advising rules on burning under the RAQP.	UIR
20-Mar-09	18283	Smoke nuisance.	Great North Rd, Springs Flat	The fire was extinguished upon request.	1RR
20-Mar-09	18288	Smoke nuisance.	Third Ave, Whangarei	There was no fire at the time of inspection.	ONR
20-Mar-09	18289	Smoke nuisance.	Charles St, Whangarei	There was no fire at the time of inspection.	ONR
22-Mar-09	18286	Smoke nuisance.	Haruru Falls	A letter has been sent to the alleged offender advising of smoke nuisance abatement.	1IR
22-Mar-09	18287	Spraydrift.	Glenbervie, Whangarei	Requested written explanation from the person responsible. Further action will be decided after receiving the explanation.	1RU

22-Mar-09	18290	Spraypainting operation undertaken at residential property.	Handforth St, Onerahi	Investigation is continuing. WDC to follow up regarding permitted activity use.	1FU
23-Mar-09	18291	Neighbour spraying 2,4-D-Easter outside the window period.	Wright Rd, Whangarei	Incident investigation could not confirm application of agrichemical. The landowner was applying liquid fertilizer.	ONR
23-Mar-09	18293	Smoke nuisance.	Houhere Plc, Tikipunga	Could not locate the fire during site visit.	ONR
23-Mar-09	18294	Smoke nuisance.	George Point Rd, Onerahi	Could not confirm smoke nuisance.	ONR
23-Mar-09	18296	Vehicle driving through dunes north of Ruakaka estuary.	Bream Bay Coast	Investigation is continuing.	1FU
23-Mar-09	18297	High bacteria counts observed in oysters.	Orongo Bay, Russell	The high bacteria counts were observed during routine monitoring by Northland Health. A marine pollution run will be undertaken to determine if boats in the area have holding tanks.	UFP
24-Mar-09	18298	Smoke nuisance.	SH 14, Whangarei	Confirmed smoke nuisance as a result of burning green vegetation. A letter was sent advising rules on burning under the RAQP.	1WR
24-Mar-09	18300	Smoke nuisance.	Austin Rd, Maunu	Confirmed smoke nuisance as a result of burning green vegetation. A warning letter was sent advising rules on burning under the RAQP.	1WR
24-Mar-09	18301	Sewage spill.	Beach Rd, Onerahi	Investigation is continuing.	1FU
25-Mar-09	18303	Smoke nuisance.	SH1, Kaiwaka	Warning given to the occupants responsible for burning.	1WR
25-Mar-09	18304	Spraydrift.	Ninahi Rd, Taheke	Further investigation needed to confirm spraydrift complaint. A site visit is scheduled in early April.	UFU
25-Mar-09	18305	Large quantities of logs blocking river and causing house flooding.	Hives Rd, Oue	The property owner adjacent to the obstruction will be requested to remove the log jam. Houses have been built on a flood plain, and are vulnerable to flooding.	URU
25-Mar-09	18306	Alleged burning of prohibited materials.	SH 1, Kaiwaka	Property occupier was issued a formal warning regarding burning prohibited materials.	1RR
25-Mar-09	18307	Dust nuisance	Pouto Rd, Dargaville	Could not visit the site to assess dust nuisance. Investigation continues.	UFU
25-Mar-09	18308	Spraydrift.	King Rd, Mangawhai	The person responsible for the spraydrift was requested to use spraying best practice when undertaking weeding (Glyphosate) on their property.	1RR

26-Mar-09	18309	Toxic materials being burnt in industrial yard.	Te Waiti Pt, Whangarei	Prohibited materials were confirmed to have been burnt.	2ER
26-Mar-09	18311	Water in stream is severely discoloured.	Larmers Rd, Kaitaia	Investigation is continuing.	1FU
26-Mar-09	18315	Alleged burning of toxic materials.	School Valley Rd, Kaeo	Investigation is continuing.	1FU
26-Mar-09	18316	Strong odour of gas from stormwater drain.	Puketona Rd, Paihia	An odour of LPG was reported to be coming from a piped section of stormwater drain. No odour was detected at the time of visit. A further report was received some time after the visit.	UFU
26-Mar-09	18317	Dust problem from peat being dumped in neighbouring property.	McEwan Rd, Ruakaka	Investigation is continuing.	1FU
27-Mar-09	18318	Smoke nuisance.	Southend Ave, Whangarei	Difficulty experienced in contacting person responsible for burning. Investigation continues.	1FU
27-Mar-09	18319	Excessive emission from industrial chimney.	Port Rd, Whangarei	Could not locate source of excessive discharge.	ONR
27-Mar-09	18320	Trees blocking roadside drain.	Waoku Rd, Dargaville	Investigation is continuing.	1FU
27-Mar-09	18321	Odour nuisance and severe discolouration of water.	Owhetu Stream, Cable Bay	The discolouration and odour were from rotting material within the stream. FNDC investigated and advised that there was no sewage leak from the system in the area.	NNR
27-Mar-09	18322	Smoke nuisance.	Parekura Rd, Kaiwaka	The investigation is continuing.	UFU
29-Mar-09	18299	Smoke nuisance.	Raumanga Heights, Whangarei	The fire was extinguished by the occupier at the time of site visit.	1RR
30-Mar-09	18323	Alleged unconsented mangrove reclamation.	Ngunguru Ford Rd, Whangarei	Investigation is continuing.	1FU
30-Mar-09	18326	Industrial smoke nuisance.	SH1, Kauri	Investigation is continuing.	1FU
30-Mar-09	18327	Offensive odour.	Awakino Point, Dargaville	Investigation is continuing.	1FU
31-Mar-09	18328	Odour nuisance.	Sanctuary Park Ln, Waikaraka	Investigation is continuing.	UFU
31-Mar-09	18329	Smoke nuisance.	Maunu Rd, Whangarei	Investigation is continuing.	UFU

MARITIME INCIDENTS

Date	ICE	Description	Location	Comments	Code
02-Mar-09	3037	Porthand light reported extinguished.	Tutukaka Harbour.	New battery installed. Light now operational.	RR
02-Mar-09	3038	Porthand light reported extinguished.	The Nook	Light unit replaced and now operational.	RR
02-Mar-09	3040	Port marker on a lean.	Kerikeri Inlet	Beacon to be inspected by contractor.	FU
02-Mar-09	3041	Debris posed navigation hazard.	Wiroa Stream, Kerikeri	Several logs were removed by locals and NRC staff.	RR
02-Mar-09	3043	Log in harbour a navigation hazard.	Whangarei Harbour	A local navigation warning was issued.	IR
03-Mar-09	3044	A houseboat was anchored in the bay for period longer than 14 days.	Te Wahapu Bay	Vessel moved out of the area.	RR
04-Mar-09	3046	Coastguard vessel grounded on rocks.	Tutukaka Harbour	Accident being investigated by MNZ, TAIC and Coastguard.	OR
05-Mar-09	3050	Vehicle abandoned in the tide.	Ripiro Beach	Vehicle removal arranged by NRC and charged to insurers.	IR
06-Mar-09	3047	A moored vessel took on water and sank.	Doves Bay	Vessel removed from water.	RR
06-Mar-09	3048	Buoys alleged to be navigation hazard.	Stevensons Island	Buoys marked fishing apparatus that was legally placed.	NR
06-Mar-09	3049	Vessel broke from mooring during storm event.	Opua Basin	Vessel owner was located and vessel retrieved.	IR
06-Mar-09	3052	Report of mooring close to turning basin buoy.	Opua Basin	Application for removal of buoy forwarded to MNZ.	FU
06-Mar-09	3053	Fallen tree caused a navigation hazard.	Kerikeri Inlet	Logs removed by locals and NRC staff.	RR
06-Mar-09	3060	Departure of two vessels delayed due to bad weather.	Marsden Point	Ships departed safely once weather improved.	IR
09-Mar-09	3054	Report of debris floating down the harbour.	Port Whangarei	A local navigation warning was issued.	IR
09-Mar-09	3055	Vessel capsized at its mooring.	Matauwhi Bay	Vessel removed by owner.	IR
11-Mar-09	3061	Log retrieved from harbour.	Kissing Point, Whangarei Harbour	Log recovered by NRC staff.	RR
11-Mar-09	3062	Debris following storm event.	Waipapa Basin, Kerikeri	Logs had already been removed when NRC staff arrived on site.	IR

12-Mar-09	3063	Log in Basin.	Stone Store Basin, Kerikeri	The log has been made fast to the shore and will be removed when resources become available.	FU
13-Mar-09	3064	Floating log endangered moored craft.	Opua Basin	FNHL removed the log at the Opua boat ramp.	OR
16-Mar-09	3065	Permission sought by master of 'Darling River' to have a lifeboat practice.	Marsden Point	Permission granted for lifeboat drill.	IR
16-Mar-09	3068	Report of a vessel creating a hazard to other anchored vessels.	Army Bay	Incident investigated and issue resolved.	IR
18-Mar-09	3070	Large yacht impeded the navigation of a passenger vessel.	Pilotage area	Verbal warning given to yacht skipper by Deputy Harbourmaster.	IR
19-Mar-09	3072	Application to immobilise ship's engine at berth.	Marsden Point	Approval given by Harbourmaster.	IR
25-Mar-09	3076	Report of vessels exceeding 5 knots amongst moorings.	Wellingtons Bay	Warning letters issued to owners.	WR
27-Mar-09	3078	Log on beach.	Marsden Point	Log recovered by stevedore.	OR
27-Mar-09	3079	Departure of Navy tanker delayed due to mechanical problem.	Marsden Point	Mechanical problem resolved, ship sailed safely without further incident.	OR
28-Mar-09	3080	Log lost overboard during loading.	Whangarei Harbour	Log recovered from the harbour by the stevedore.	OR
29-Mar-09	3081	Log reported floating in harbour.	Limeburners Creek, Whangarei harbour	Navigation warning issued.	IR
31-Mar-09	3085	Application to immobilise ship's engine at anchor.	Bream Bay	Application approved by Harbourmaster.	IR
02-Mar-09	3039	A small oil slick appeared after a vessel sank at its mooring.	Awanui River	Small slick was cleaned up by vessel owners.	1R
02-Mar-09	3042	Diesel slick reported around refuelling berth.	Russell Wharf	Small slick was monitored and left to disperse naturally.	1I
16-Mar-09	3067	Diesel spill reported.	Roberton Island, Bay of Islands.	Left to disperse naturally.	1I
18-Mar-09	3069	Report of pollution from commercial craft.	Paihia Wharf	Site visited and no pollution observed.	ON
19-Mar-09	3071	Huge oil slick reported by fishing vessel.	North of Cape Karikari	No oil slick found during thorough aerial surveillance flight.	0F

20-Mar-09	3073	Small diesel spill reported.	Pomare Bay, Bay of Islands.	Spill left to disperse naturally.	1N
21-Mar-09	3074	30-50m long oil slick on beach.	Kerikeri Inlet	Site visit revealed extensive mangrove waste but no oil.	ON

Recommendation

1. That the report from the Monitoring Senior Programme Manager Riaan Elliot dated 3 April 2009 be received.
2. That the follow-up action taken by staff resulting from monitoring or environmental/maritime incidents during March 2009 be supported.

COMPLIANCE WITH DECISION MAKING PROCESS

The activities detailed in this report are provided for in the Council's 2006/2016 LTCCP, and as such are in accordance with the Council's decision-making process and Sections 76-82 of the Local Government Act 2002.

Warrants of Appointment: Resource Management Act 1991 and Biosecurity Act 1993

File: 100.2, 220.4.1, 220.4.6

Report from Operations Director Tony Phipps dated 2 April 2009.

PURPOSE

To authorise the issuing of warrants of appointment under the Resource Management Act 1991 and the Biosecurity Act 1993 to officers within Operations directorate.

INTRODUCTION

The duties of the listed officers require them to enter onto property to enforce the provisions of the Resource Management Act (RMA) and the Biosecurity Act (BSA) to undertake inspections and, in the case of Biosecurity officers, issue instructions and/or undertake pest control operations. In accordance with Council policy, staff are required to be with Council at least six months and have undergone specific training prior to them being delegated the authority to issue abatement notices under the RMA. Consequently only powers to seek information and for entry onto property are being recommended at this stage.

The officers are:

Sophie Jane Tweddle	Environmental Monitoring Officer - State of the Environment Reporting
Allen David Temple	Hydrology Monitoring Officer
Curtis John Edward Harris	Land Management Officer
Wayne Desmond Teal	Land Management Officer
Gail Sharon Townsend	Biosecurity Officer
Paul Douglas Ian Maxwell	Consents Officer – Coastal
Wolfgang Georg Kruger	Consents Officer – Water and Waste

The Council is asked to authorise the issuing of warrants of appointment to the above officers, evidencing their authorities under the following sections of the Resource Management Act 1991:

- 22 Power to seek information, including the names and addresses of persons believed to have breached the Act.
- 332 Power of entry onto private property (except dwelling house); and to take samples of water, air, soil or organic matter.
- 333 Power to enter property to carry out surveys, investigations, tests or measurements.

In addition, the Council is advised that the Council's Chief Executive Officer, exercising his powers under Section 103 of the Biosecurity Act, has issued a warrant of appointment as an "authorised person" under the Biosecurity Act to Gail Townsend, with authority under the following sections of that Act:

- 106 Power to require assistance
- 109 Power of inspection
- 113 Power to record information
- 114 General powers
- 121 Power to examine organisms
- 122 Power to give directions

Recommendation

1. That the report Warrants of Appointment: Resource Management Act 1991 and Biosecurity Act 1993 by Operations Director Tony Phipps dated 2 April 2009, be received.
2. That warrants of appointment under the Resource Management Act 1991 be issued to:

Sophie Jane Tweddle	Environmental Monitoring Officer - State of the Environment Reporting
Allen David Temple	Hydrology Monitoring Officer
Curtis John Edward Harris	Land Management Officer
Wayne Desmond Teal	Land Management Officer
Gail Sharon Townsend	Biosecurity Officer
Paul Douglas Ian Maxwell	Consents Officer – Coastal
Wolfgang Georg Kruger	Consents Officer – Water and Waste
3. That it is noted that the Chief Executive Officer has appointed Gail Townsend as an authorised person pursuant to section 103 of the Biosecurity Act 1993, who may exercise powers under sections 106, 109, 113, 114, 121, and 122 of that Act.

COMPLIANCE WITH DECISION MAKING PROCESS

The activities detailed in this report are provided for in the Council's 2006-2016 Long Term Council Community Plan and as such are in accordance with the Council's decision-making process and sections 76 to 82 of the Local Government Act 2002.

Business with the Public Excluded

File 105.2

Recommendation

That pursuant to the Local Government Official Information and Meetings Act 1987, the public be excluded from the remainder of the meeting to consider:

1. Confirmation of Confidential Minutes of Meeting held on 18 March 2009
2. Shareholder Governance
3. Enterprise Northland
4. 2009/2010 Draft Statement of Intent – NRC Community Trust
5. Infrastructure Development Agency
6. Local Government New Zealand Vehicle Allowances
7. Bonding Alternatives for Aquaculture Industry
8. Annual Performance Review of the Chief Executive Officer

The reason for excluding the public in relation to item 1 are as stated in the Minutes of that meeting.

In relation to item 2, public conduct of the proceedings would be likely to result in the disclosure of information, the withholding of which is necessary to allow the Council to conduct without prejudice or disadvantage commercial activities pursuant to Section 7(2)(h) and (i) of the said Act

In relation to Items 3, 4 and 7, the reason for excluding the public is to protect information that would disclose or unnecessarily prejudice a commercial position as permitted by section 7(2)(b).

In relation to item 5 the withholding of the information is necessary to maintain the effective conduct of affairs through the full and frank expression of opinion between Council and officers as permitted by section 7(2)(f).

In relation to items 6 and 8, the reason for excluding the public is to protect the privacy of natural persons as protected by section 7(2)(a).