

Smoked out in Whangarei City

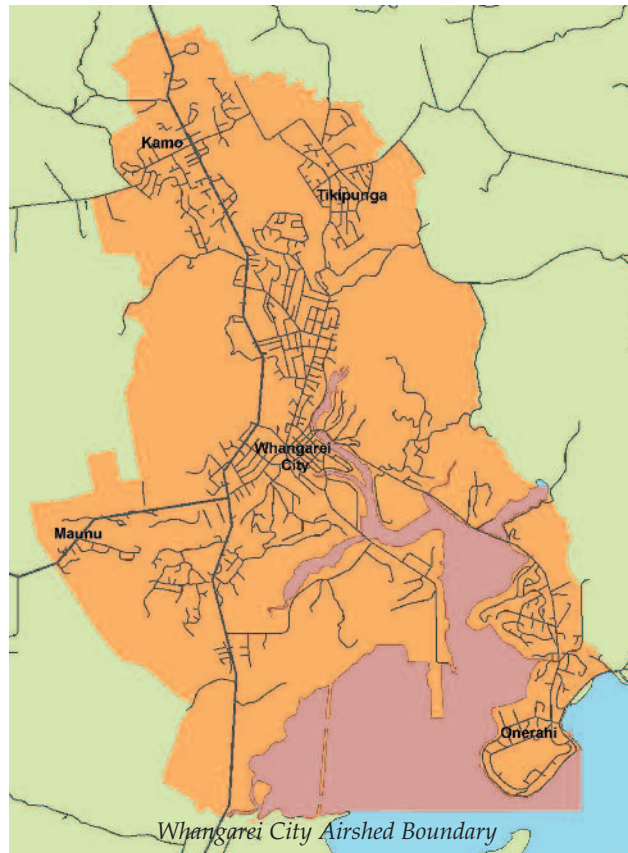
Ten alternatives to burning

1. Recycle plastics, paper, glass and tins by placing them in your recycle bin for your weekly refuse collector or take to your local recycling centre.
2. Compost garden waste including clippings, trimmings, small branches and leaves.
3. Mulch larger branches (up to 30cm in diameter) using a chipper or shredder and add to your garden as a soil conditioner.
4. Use a worm farm to dispose of vegetable peelings and food scraps.
5. Dispose of household refuse in rubbish bags as part of your weekly kerbside collection service.
6. Take larger quantities of refuse to a transfer station for disposal.
7. Larger branches and logs can be cut to size and used as firewood during the winter in your internal domestic fireplace.
8. Computer waste can be disposed of during E-day events.
9. Hire a mini-skip and place your waste material in the skip for removal.
10. Waste that may be of use to someone else can be registered on the waste exchange website: www.nothrow.co.nz

Further information

You are welcome to contact members of the Regional Council's Air Quality Team, toll-free, on 0800 002 004. Find out more about waste disposal alternatives: www.nrc.govt.nz/forhomes

Talk to your neighbours



36 Water Street, Private Bag 9021, Whangarei 0140.
Telephone: 09 438 4639 Facsimile: 09 438 0012
Email: mailroom@nrc.govt.nz
Freephone: 0800 002 004
24/7 Environmental Hotline: 0800 504 639
Website: www.nrc.govt.nz

Caring for Northland and its environment



Golden Design and Print Co. December 2008

Caring for Northland
and its environment



Smoked out in Whangarei City

What should you do?

If the fire is not dangerous but is causing a smoke nuisance, you should first discuss this with the person who is burning. In most cases, neighbours are unaware that they are causing problems and will cease burning immediately.

If the burning continues, then call the Northland Regional Council on 0800 504 639 to report the fire. If the Regional Council confirms that smoke from an outdoor fire is resulting in offensive smoke or odour, it may take formal enforcement action.

If the fire is endangering people or property, then call 111 immediately and ask for the fire service.

What are the rules?

From 1 December 2008, residents of Whangarei City can no longer burn waste within the city airshed area (see map reverse) unless they hold a resource consent, or their property is larger than one hectare. However, burning for food cooking purposes using barbeques, hangi, umu and using wood-fired kilns is still permitted.

Smoke from outdoor burning pollutes the air, causing serious health problems. Much like cigarette smoke, the smoke from burning leaves, grass, brush and tree needles can cause asthma, emphysema, bronchitis and lung cancer.

The smoke from the fire (below) affected more than 70 households.



Fire Permits

As well as limiting the smoke from outdoor fires, the person lighting the fire may also need a fire permit from a Rural Fire Authority.

Contact **Forest Protection Services** - telephone 09 430 7707 between 9am and 4pm weekdays for more information.

Illegal substances

It is illegal to burn any of the following at any time:

- Rubber tyres
- Coated metal wires
- Oil
- Treated timber (using CCA chemicals)
- Plastic containers
- Hazardous substances or containers of hazardous substances
- Motor vehicle parts.

If you are unsure, contact the Northland Regional Council on 0800 002 004.

