

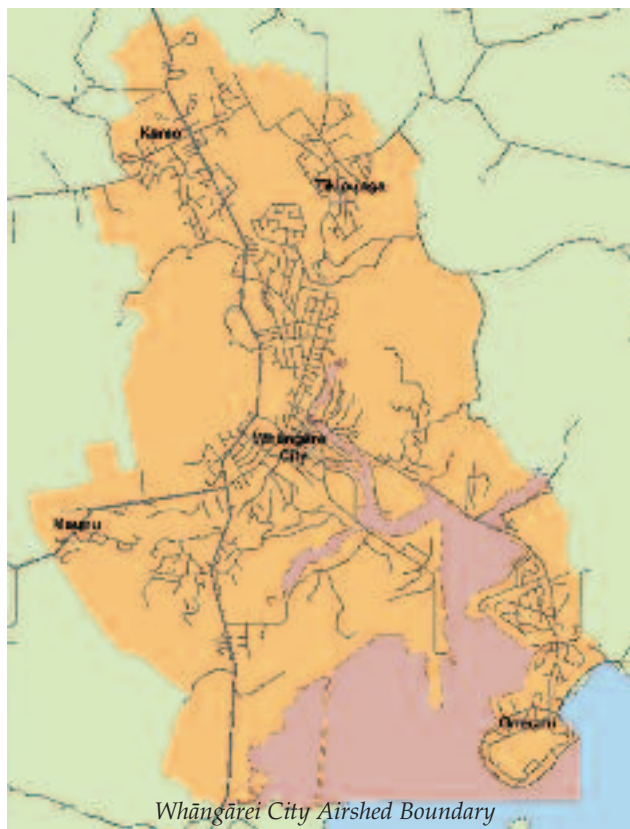
Ten alternatives to burning

1. Recycle plastics, paper, glass and tins by placing them in your recycle bin for your weekly refuse collector or take to your local recycling centre.
2. Compost garden waste including clippings, trimmings, small branches and leaves.
3. Mulch larger branches (up to 30cm in diameter) using a chipper or shredder and add to your garden as a soil conditioner.
4. Use a worm farm to dispose of vegetable peelings and food scraps.
5. Dispose of household refuse in rubbish bags as part of your weekly kerbside collection service.
6. Take larger quantities of refuse to a transfer station for disposal.
7. Larger branches and logs can be cut to size and used as firewood during the winter in an internal domestic fireplace.
8. Computer waste can be disposed of during eDay events.
9. Hire a mini-skip and place your waste material in the skip for removal.
10. Waste that may be of use to someone else can be registered on the waste exchange website: www.nothrow.co.nz

Further information

You are welcome to contact members of the Regional Council's Air Quality Team, toll-free, on 0800 002 004. Find out more about waste disposal alternatives: www.nrc.govt.nz/forhomes

Think of your neighbours



36 Water Street, Private Bag 9021,
Whāngārei Mail Centre, Whāngārei 0148.
Telephone: 09 438 4639 Facsimile: 09 438 0012
Email: mailroom@nrc.govt.nz
Freephone: 0800 002 004
24/7 Environmental Hotline: 0800 504 639
Website: www.nrc.govt.nz

Putting Northland first

Backyard burning

WITHIN urban Whāngārei



Colliers Design and Print Co. October 2010

Putting Northland first



Backyard burning WITHIN urban Whāngārei

The issue

Residents of Whāngārei City can not burn waste within the city airshed area (see map reverse) unless they hold a resource consent, or their property is larger than one hectare. However, burning for food cooking purposes using barbeques, hangi, umu and using wood-fired kilns is permitted.

Smoke from outdoor burning pollutes the air, causing serious health problems. Much like cigarette smoke, the smoke from burning leaves, grass, brush and tree needles can cause asthma, emphysema, bronchitis and lung cancer.

Penalties

People burning waste without resource consent in the Whāngārei City area risk formal enforcement action.

This can range from a verbal warning or abatement notice for first time offender, to an instant fine of up to \$1000 for repeat offenders or serious offences.

This photo shows nuisance smoke, which required the evacuation of several elderly residents living nearby.

Whāngārei City Area

The boundary of the restricted area includes most of Kamo, Tikipunga, Kensington, Morningside, Central Whāngārei, Otangarei, Raumanga, Maunu and Onerahi. A more accurate map can be found on the reverse of this brochure or on the Northland Regional Council website at www.nrc.govt.nz/backyardburning

Resource consents

You can apply to the Regional Council for resource consent to burn waste. Application forms are available from the Council or its website: www.nrc.govt.nz/consents. The application fee is currently \$50 (excluding GST).

Anyone considering an application should discuss it with an Air Quality Officer from the Northland Regional Council. As a minimum the application will need to include the written approval of all adjoining landowners within 100 metres of the proposed fire.



Illegal substances

It is illegal to burn any of the following at any time:

- Rubber tyres
- Coated metal wires
- Oil
- Treated timber (using CCA chemicals)
- Plastic containers
- Hazardous substances or containers of hazardous substances
- Motor vehicle parts.

If you are unsure, contact the Northland Regional Council on 0800 002 004.

