

## PART 4 - SUMMARY

The New Zealand Biodiversity Strategy released in February 2000 set out a programme to halt the decline of New Zealand's indigenous biodiversity. Significant funding increases in biodiversity-related programmes have been made by central government. In Northland funding by regional and local councils has increased over the past five years as more people are undertaking restoration initiatives, either individually or in groups, collectively working for biodiversity enhancement and protection in the region.



Manuka, Great Exhibition Bay;  
(Photo: NRC)

The Northland Biodiversity Enhancement Group recognised the need to increase the effectiveness of agencies and organisations to meet the regional needs for biodiversity enhancement on private land. The group embarked on a joint project to develop and implement an integrated approach to biodiversity enhancement in Northland – the “Whole of Northland” project.

Key conclusions of the project are discussed.

### 4.1 Building relationships - coordination and collaboration is crucial

The biodiversity challenge is bigger than any one agency or organisation. Successful approaches to biodiversity enhancement and restoration require coordinated responses from all scales of management. Communication and relationship building between agencies and organisations is seen as an important role to effectively deliver biodiversity outcomes for Northland.

Some of the most threatened habitats in Northland are found in the more rural and lower socio-economic areas. Low rating bases in those areas remove some management options. Equally the three district councils in the region have different capacities, awareness and willingness to conserve biodiversity in the region; clarity of roles and responsibilities matched by capacity may be required to avoid duplication of effort.

Agencies and organisations are starting to see the role of N-Beg as an important mechanism through which to effectively assist delivery of biodiversity outcomes for the region.

N-Beg is building momentum although not all key players are fully on board.

***The group has successfully provided a forum in which people can discuss informally a wide range of issues pertaining to Northland's biodiversity and related issues. The input and involvement by on-ground practitioners from agencies and organisations is seen as important as it brings a wider perspective of issues as well as all levels to the forum.***

### 4.2 Some information needs are outstanding

- *The project has evolved as “work in progress”.* Completion of an inventory on biodiversity activities alongside threatened environments will identify the contribution that the region is making to meeting New Zealand's national priorities for biodiversity, help to grow the understanding and appreciation of the extent of biodiversity values in the region, and lever further community support for work to protect and enhance priority ecosystems and threatened species in the region. A database of action underway has been started, and all existing information has been incorporated. However there are still

many areas in the database where the information is not available in an appropriate digital manner. There is valuable historical<sup>2</sup> and current biodiversity information captured by agencies and organisations that is not easily accessible.

- *Biodiversity protection is an evolving science.* There is a need for increased coordination between agencies and organisations around identification of what ecological information, resources and tools are required; and what is available to assist agencies, organisations and encourage landowner's ability to sustain biodiversity.
- *Agencies and organisations in Northland have different approaches, requirements and capacity to monitor key changes in the environment.* A regionally consistent approach to ecosystem assessment designed and implemented should have regard for the need to involve all agencies and organisations responsible for managing biodiversity. The Northland Regional Monitoring Forum provides a mechanism through which agencies and organisations can develop a consistent approach for environmental indicators and monitoring systems that integrates and aggregates monitoring and reporting obligations for state of the environment monitoring. A consistent approach for monitoring regional and central government funded projects<sup>3</sup> will assist agencies to meet agreed set of objectives for biodiversity outcomes. ***The Forum has made progress in addressing biodiversity monitoring. However, on-going support and facilitation is required for the Forum to address biodiversity monitoring and agreed outcomes.***

### 4.3 We are making progress!



Another kiwi released onto private land managed for kiwi recovery; (Photo: Blue Orb)

- ***The recently initiated Whole of Northland GIS based database detailing biodiversity values and action has contributed to an increased level of transfer of information by some agencies*** and is providing agencies and organisations with a management tool to assist and support integrated land use decisions. For example, the recently developed “General distribution and relative abundance of kiwi in Northland “(Feb 06, Wildlands Consultants) has been incorporated into councils’ decisions for land use activities. The developing database will in time provide agencies and organisations access to a wide range of biodiversity information, identify gaps, commonalities and opportunities for agreed outcomes for the region’s biodiversity alongside threatened ecosystems.
- ***N-Beg has provided a forum for discussions with the Northland Regional Monitoring Forum*** for opportunities to support regional initiatives to increase the level of monitoring. Progress has been made towards the development of a regional monitoring system to support agreed regional outcomes for biodiversity and State of the Environment monitoring.
- ***Coordinated effort between agencies and organisations has led to biodiversity gains that otherwise would not have been achieved.*** N-Beg has provided a process and a mechanism by which agencies and organisations can work co-operatively to achieve agreed outcomes for Northland. Policies, objectives, rules and activities within a

<sup>2</sup> Prior to 1994 Sites of Biological Interest Inventory (SSBI) was the main technique used by the Department of Conservation to identify and priorities natural areas for protection in private land.

<sup>3</sup> Biodiversity Condition Fund is a NZ Government initiative aimed at enhancing the management of indigenous biodiversity on private land, including Maori land. See [www.biodiversity.govt.nz](http://www.biodiversity.govt.nz)

range of agencies can have a significant influence on the degree of protection of biodiversity values of the region. Agencies and organisations are now referring to N-Beg as providing a role for supporting on-ground effort for biodiversity, evident in the uptake of individual councils to provide increased voluntary measures and financial incentives alongside a range of formal mechanisms to protect threatened ecosystems.

- **Workshops and the Dargaville Field Days** have provided a high public profile and demonstrated that organisations have been successfully working together to support on-ground work in communities. The field days also provided value through increased interaction between staff from different organisations.
- **The Inter-Agency Planning Workshop** (August 2006)<sup>4</sup> helped agencies and organisations to identify their priorities and opportunities to focus and support further biodiversity effort and protection in Northland. The workshop identified the differing goals and objectives of the agencies and organisations in Northland and provided some opportunities for co-operative work. It also highlighted commonalities and duplication of information through slightly different approaches. Follow-up meetings with key representatives from agencies and organisations have been undertaken to get agreement on common goals/outcomes for collaborative work.

#### **4.4 Where to now?**

It has been two years since the start of the Whole of Northland Project with the aim of developing the components of strategic direction for Northland.

There is now an opportunity to build upon the foundations set by the Whole of Northland Project to further the partnerships developed with other key stakeholders, and enhance the priority setting within agencies and organisations responsible for promoting biodiversity enhancement in Northland.

#### **Key tasks identified:**

##### **Integration of effort for biodiversity in Northland:**

- Build on the relationships developed through N-Beg to establish a long-term vision with agreed priorities and outcomes for biodiversity enhancement and protection in Northland. The current review of the Regional Policy Statement provides a process to agree on priorities and outcomes for biodiversity for inclusion into District and Long Term Council Plans.
- The developing database is providing a vehicle for identifying biodiversity enhancement activity in the region and, based on agreed outcomes, will identify where the gaps and opportunities are for further biodiversity work.
- Further engagement of all levels and groups of people within agencies and organisations.

##### **Continued mapping of biodiversity and provision of information:**

- There is a role to continue to coordinate and facilitate the transfer and sharing of biodiversity information between agencies, groups and individuals.
- More information is becoming accessible and there have been some agreements between agencies and organisations on roles and data/information sharing.
- It is important to improve access to project information for projects funded through national, regional and local funding. This is a key element in matching projects to threatened ecosystems and environments, and identifying opportunity for focussing effort.

---

<sup>4</sup> The outcomes from the Interagency Planning Workshop are outlined in Appendix 1

**Monitor and review progress:**

- Agree on a way to monitor and review progress to achieve the agreed biodiversity outcomes and, if necessary, modify the outcome or process for Northland's biodiversity. The Northland Regional Monitoring Forum and N-Beg provide a process through which agencies and organisations can facilitate the development of an integrated inventory and monitoring framework for biodiversity ensuring consistency and a regional approach is adopted where possible. An integrated monitoring framework will assist councils in fulfilling their statutory responsibilities for monitoring and reporting on the State of the Environment as well as to facilitate opportunities for uptake of a regionally consistent inventory and monitoring system for projects delivered by community groups and individual landowners.

**Development of community relationships with Maori landowners:**

- Maori and Maori landowners have a distinct relationship to biodiversity and perspective on land management and protection. The contribution and understanding of matauranga Maori into biodiversity and sustainable land management would provide an important role in the development of the Whole of Northland project. There is potential to build on existing relationships with Northland runanga and linkages with hapu management plans under development to encourage their involvement in the Whole of Northland approach.

**Meeting the needs for information, knowledge and capacity:**

- Collaborate with agencies and community groups for the development of a regional extension framework to integrate information and resources on management of biodiversity.
- Review and update current regional publications and look for opportunities to link potential training providers and individual initiatives for biodiversity projects on private land.
- Facilitate the investigation for the development of a website for the Whole of Northland Project that will assist agencies and communities with biodiversity information.

**Facilitation and Support of On-Ground Action:**

- Restoration initiatives and active management on private land is increasing in Northland. It is necessary to continue to motivate or facilitate support for these efforts to broaden the base of community interest and action in the protection of biodiversity. There are increasing opportunities in Northland for information brokering and capacity building, with the most important "winning of hearts and minds" of landowners to encourage active management of biodiversity values. Partnerships with other agencies and training providers are crucial in the provision of this support.

*For Clinton Rameka, manager of the Takou Were-Te-Mokai project north of Kerikeri, looking after the land is part of his tikanga or way of life.*

*"I'm a landowner on ancestral land. I live here and I'll be living here until I die and my children and grandchildren will live here. I'd rather be looking after our place than working looking after somewhere else."*

*The Takou Were-Te-Mokai project covers 3500 hectares of Maori and private land. It employs Clinton as trapper/manager and seven trustees.*



Takao Bay area;  
(Photo NZ Landcare Trust)

*Since setting up the pest control project in 2003 Clinton has seen dramatic improvements in the flora and fauna.*

*"Possum numbers are down, there are more birds and the pohutukawa are not getting annihilated."*

*Clinton adds that looking after the land is an ongoing responsibility as well as a labour of love. "There's a lot of work to be done around here. It's our Maori way to care about the land, the natural environment. If you are going to feed off it and live off it you have to look after it and Takou Bay has been in Maori hands since the beginning."*

## REFERENCES

AC Nielson 2005: Northland: Our Place, Our future. *Report prepared for NRC, FNDC, KDC and WDC*

Conning L.D 2001: Northland Protection Strategy, *A report to the Nature Heritage Fund Committee*

Department of Conservation 2005: Natural Areas of the Whangaruru Ecological District: *Reconnaissance Survey Report for the Protected Natural Areas Programme 2005*

Hitchmough, R. (comp.) 2002: New Zealand Threat Classification System lists. *Threatened species occasional publication 23, 210 p., DOC Science Publishing, Science & Research Unit*

Pierce, R.J., Gardiner, C., Moodie, H., Robertson, H.A., Sporle, W., 2006: Sustainable Management of Brown Kiwi and other threatened birds in Northland. *Wildlands Contract Report No.1193*

### **Other source of information used in preparation of this report included:**

Department of Conservation 1999, Northland Conservation Management Strategy.

Department of Conservation 2000. New Zealand Biodiversity Strategy

Department of Conservation 2006. Wren Green -Benefits of Biodiversity Condition Fund Projects for Biodiversity Priorities

Far North District Council, Revised Proposed District Plan

Far North District Council 2006, Long Term Council Community Plan 2006-2016

Kaipara District Council, Operative District Plan

Kaipara District Council 2006, Long Term Council Community Plan 2006-2016

Northland Regional Council 2006, Long Term Council Community Plan 2006-2016

Northland Regional Council, Regional Policy Statement

Northland Regional Council, Pest Management Strategies

Ministerial Advisory Committee to the Ministry for the Environment 2000, Biodiversity and Private Land

Ministry for the Environment 2000, Bio what?

Ministry for the Environment 2007, Protecting our Places – introducing the national priorities for protecting rare and threatened native biodiversity on private land.

Whangarei District Council 2006, Long Term Council Community Plan 2006-2016

Whangarei District Council, Proposed District Plan

## APPENDICES

### APPENDIX 1: SUMMARY & COMPONENTS OF THE INTERAGENCY PLANNING WORKSHOP

In August 2006 an Interagency Planning Workshop was held in Whangarei. The workshop provided an opportunity for agencies and organisations to discuss their priorities for biodiversity, the basis on which those priorities are made, share information and identify common priorities and opportunities for biodiversity in Northland.

The following section summarises the components and opportunities for biodiversity enhancement in Northland provided by the group.

#### 1. Components of biodiversity enhancement.

Key points describing components of biodiversity enhancement

##### i) Knowledge/Information

- A comprehensive knowledge and understanding of Northland's ecological values and threats to support biodiversity and to assist agencies and organisation for planning and priority setting.
- A range of good informative and accessible information on biodiversity in Northland would provide a mechanism to support communities with on ground projects, foster support and empower communities.
- The development of a website would provide agencies and communities access to ecological information and a range of tools to support biodiversity.

##### ii) Capacity building/on-ground support

- A coordinated and collaborated approach for ecological priorities between agencies is seen as an important component to build support and capacity in communities.
- The knowledge and in house expertise of staff to confidently provide support to communities including financial and human resources to effectively support on the ground projects.
- Encourage partnerships and collaboration with potential training providers to provide technical expertise and support for on ground work in communities.
- Accessible funding and a range of incentives and tools to support biodiversity on the land.

##### iii) Collaboration/Coordination

- Communication and relationship building between agencies and organisations is seen as an important role to effectively deliver biodiversity outcomes.
- An integrated and consistent approach to planning and legislation
- A long term vision by all agencies and organisations with agreed priorities and outcomes for the regions biodiversity.
- Good communication, understanding, respect and appreciation of Maori cultural values and knowledge for biodiversity.

#### 2. Opportunities for biodiversity enhancement

The group workshop provided a list of opportunities for biodiversity enhancement and protection in Northland and these are summarised:

**i) Tangata whenua needs are identified and respected:-** Maori and Maori landowners have a distinct relationship to biodiversity and a distinct perspective on land management and protection. The contribution and understanding of Maturanga Maori into biodiversity and sustainable land management (Rural Sustainability Workshop July 2006) would provide an important role in the development of the “Whole of Northland” project.

#### Opportunities

- Presentation of the WON project to hapu/Runanga
- Link to hapu management plans and agreements
- Link to the Rural Sustainability Workshop/hui
- Develop a relationship with Te Puni Kokiri

**ii) Database information and monitoring-** Agencies and organisations have different approaches and capacity for data methodology and collection. A regionally consistent approach can be designed and implemented and information regionally co-ordinated.

#### Opportunities

- Consistent and compatible database information and maps
- Central collection/analysis for regional and national access
- Facilitate collective development of consistent monitoring methodology
- SOE monitoring
- Facilitate mechanisms for information sharing and accessibility for agencies and landowners

**iii) Education and resources-** a regional extension plan would integrate all information and resources available to landowners in the region to manage biodiversity.

#### Opportunities

- Landowner toolbox
- Review and update current publications i.e. Restoring the Balance kit, brochures, website information/access
- Regional extension plan to link potential training providers and individual initiatives-landowner toolbox
- Northland Biodiversity Enhancement group as a vehicle for encouraging coordination
- Information sharing about funding priorities and opportunities
- Develop a website

**iv) Planning-** A collaborative and coordinated approach to biodiversity priorities is required in Northland if we are to make progress in “halting the decline”. There is the need to develop the “Big Picture” of what is happening in the region, assess what is important, prioritise an action plan and monitor progress towards a “strategic direction”

#### Opportunities

- Annual sharing of agency and organisations priorities pre-budget setting
- Establish priorities for action and immediate goals for specific on-ground projects
- Use the CMS/RPS and LTCCP to establish a strategic direction

**v) Political buy-in** – Outline the processes followed in the WON project. This will assist in providing a useful tool that can be transferred to other regions wishing to adopt a similar process for biodiversity management.

#### Opportunities

- The Northland Biodiversity Enhancement Group and the Whole of Northland project as a tool for other regions – lessons learnt.

## APPENDIX 2: STATEMENT OF NATIONAL PRIORITIES FOR PROTECTING RARE AND THREATENED NATIVE BIODIVERSITY ON PRIVATE LAND

In April 2007 the Ministry for the Environment released the statement of National Priorities that identifies the types of ecosystems and habitats most in need of protection.

The statement supports the government's pledge to maintain and preserve New Zealand's natural heritage and will be of particular use to local government, which has the primary role of protecting native biodiversity on private land – a role assigned to them under the Resource Management Act (RMA) 1991.

Along with clear priorities, the statement provides a national perspective which councils can use in planning and decision-making.

Four national priorities for biodiversity protection have been set:

- National Priority 1:** To protect indigenous vegetation associated with land environments that have 20 % or less remaining in indigenous cover.
- National Priority 2:** To protect indigenous vegetation associated with sand dunes and wetlands; ecosystem types that have become uncommon due to human activity.
- National Priority 3:** To protect indigenous vegetation associated with 'originally rare' terrestrial ecosystem types not already covered by priorities 1 and 2
- National Priority 4:** To protect habitats of acutely and chronically threatened indigenous species.



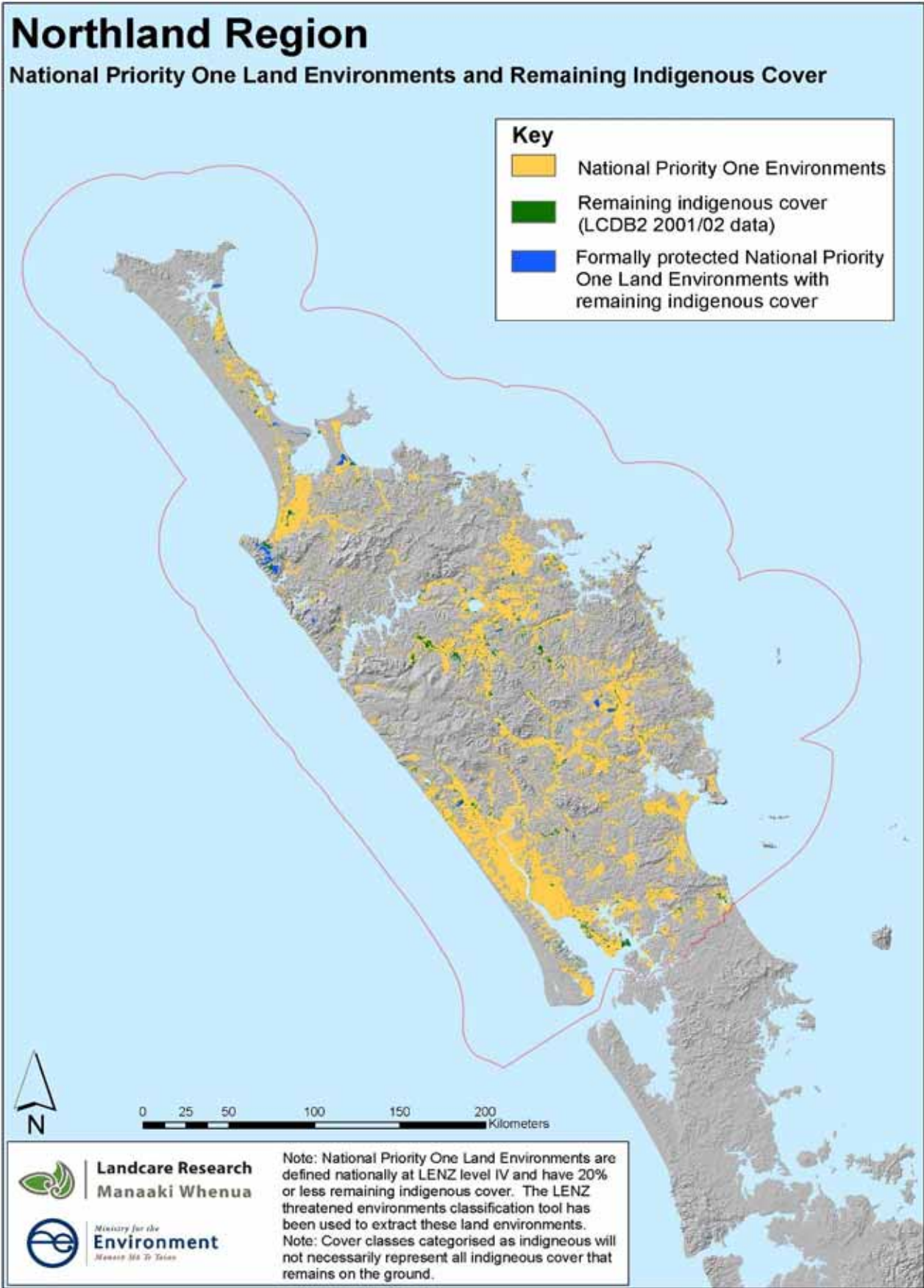
Ackama nubicola, Wekaweka Valley;  
(Photo: NRC)



Dune Lake, Great Exhibition Bay;  
(Photo NRC)



Gunnera dentata, Pouto; (Photo: NRC)



### APPENDIX 3: SOME LANDCARE AND COMMUNITY GROUP ACTIVITY

Group Name	Weed Control	Possum/rat control	Predator control	Revegetation	Dune Restoration	Kiwi Recovery	Other:
Ahipara Primary School				✓			Threatened plant recovery
Bay of Islands Maritime Park Inc							Integrated Environmental Management plan
Bream Head Restoration Trust	✓	✓	✓	✓			Predator proof fence proposed
Brynderwyn Possum Control		✓					
Bushland Trust	✓			✓			Sweetwater Lakes preservation and protection
Friends of Mangawhai Harbour				✓	✓		Riparian planting and protection
Friends of Matakoho-Limestone Island	✓	✓	✓	✓			Island restoration
Friends of Rangikapiti Reserve Inc Society	✓			✓			
Friends of Taumarumaru Reserve	✓			✓			
Glinks Gully Coastcare				✓	✓		
Guardians of the Bay of Islands		✓	✓				Island Restoration
Herekino Landcare	✓						
Honey Moon Valley group		✓	✓			✓	
Hupara Landcare		✓	✓			✓	
Jack Bisset Wetland Standholders Committee	✓	✓	✓	✓			
Kaiatea Landcare		✓	✓			✓	
Koumaru Landcare		✓	✓			✓	

Lake Omapere Project Management Team	✓			✓			Riparian restoration
Little Munro Landcare Group	✓			✓			
Mahinepua-Radar Hills Landcare		✓	✓			✓	Kiwi recovery
Mangakahia Landcare	✓			✓			Integrated Catchment Management
Mangamuka Marae				✓			Local environmental projects
Manganese Point Landcare Group	✓	✓		✓			CPCA
Mangawhai Harbour Restoration Society		✓		✓	✓		
Mangawhai Pride				✓			Riparian planting
Maungakaramea Landcare group	✓	✓	✓	✓			
Mt Tiger Landcare Group							Goat control
Muriwhenua Incorporation		✓					Fencing, habitat protection proposed
Ngunguru Ford Rd landcare	✓	✓	✓				
NZ Kiwi Foundation		✓	✓			✓	Council advocacy
Oakura Landcare Group							Water quality
Omamari Beach Care Group					✓		
Omapere Papa-Tahi Trust	✓						
Owhiwa Landcare Group		✓	✓				
Pahi Possum Patrol		✓					
Papakarahi Landcare	✓	✓	✓	✓		✓	
Paparoa Lions		✓		✓			

Russell Landcare	✓	✓	✓	✓		✓	Weka recovery,
South Hokianga Ginger Group	✓						
Taiharuru Catchment Care Group	✓	✓		✓			Riparian Management
Taiharuru Conservation Area		✓	✓	✓		✓	
Taipa School				✓			
Takao Were te Mokai Charitable Trust		✓	✓	✓		✓	
Taupo Bay Kiwi Group		✓	✓			✓	
Taurikura Landcare							Argentine Ant control
Taurikura Ridge Landcare		✓	✓			✓	
Te Hurihunga Te Tukunga Trust		✓					
Te Mahurehure Roopu Whenua Taonga Trust		✓	✓			✓	Kokako recovery
Te Oho Mai Puketi		✓	✓			✓	Kokako recovery
Te Puia Waipounamu Aotearoa Charitable Trust	✓						Urupa protection
Tutukaka Landcare Coalition		✓	✓			✓	Pateke recovery
Tutukaka Peninsula Landcare group		✓					
Waiarohia Stream Care Group	✓			✓			Riparian management
Waimamaku River Awareness Group		✓		✓	✓		
Waimate North Landcare Trust		✓	✓	✓		✓	
Waiotira Landcare Group		✓					
Waipoua Forest Trust		✓	✓	✓		✓	

Wekaweka Landcare Group		✓	✓			✓	
Whakaangi Landcare Trust		✓	✓			✓	
Whangarei Heads Citizens Association	✓						
Whangarei Heads Landcare Forum						✓	Council Advocacy
Whatuwhiwhi Beach Care Group					✓		
Whau Valley Landcare Group	✓	✓					

**APPENDIX 4: BIODIVERSITY CONDITION AND ADVICE FUND PROJECTS FOR NORTHLAND - 2003- 2006**

Project Number	Advice Fund - Project Name	Organisaton	Amount	Area Treated (ha)	Value Protected
ADV-011a	Facilitating & supporting biodiversity management in Northland & Auckland	NZ LCT	\$100,000		Biodiversity
ADV-041	Coordination of Biodiversity Enhancement in Northland	NRC	\$50,000		Biodiversity
ADV-094a	Northland Landcare Biodiversity	NZ LCT	\$54,595		Biodiversity
ADV-094g	Implementation of the "Self help tool hit" for landowners in Northland	NZ LCT	\$5,130		Biodiversity
ADV-155a	A Whole of Northland Approach to Biodiversity Restoration	NZ LCT	\$100,000		Biodiversity
ADV-173	Kaimamaku Biodiversity Recovery Programme	Private Individual	\$3,000		Bush / Shrublands
ADV-199a	Unuwaho Restoration	NZ LCT	\$3,732		Biodiversity
ADV-199b	Tutukaka Landcare Forum Biodiversity Action Plan	NZ LCT	\$5,000		Biodiversity
ADV-218	Ecological advice / plan Pouto Topu A Trust	Pouto Topu A Trust	\$5,000		Biodiversity information
ADV-219	Creation of Restoration and Management Plan for Middle Gable, Tutukaka	Kotuku Trust	\$6,373		Coastal escarpment
ADV-238	Advice, design and project implementation of integrated predator management for biodiversity enhancement in kiwi country, Far North District (mostly)	NZ Kiwi Foundation	\$22,800		Kiwi
ADV-257a	Northland Biodiversity Coordination - Collaboration, coordination and community action	NZ LCT	\$165,000		Biodiversity information
ADV-265	Development / production of a Far North Kiwi Plan	Private Individual	\$9,608		Kiwi
ADV-276	Biodiversity Enhancement at Whangarei Heads	Whangarei Heads Landcare Forum	\$14,719		Kiwi

Project Number	Condition Fund - Project Name	Organisation	Amount	Area Treated (ha)	Value Protected
CON-030	Integrated predator management for baseline enhancement of indigenous biodiversity in Far North District	NZ Kiwi Foundation	\$135,000	2623	Kiwi
CON-039a	Whangarei Heads Landcare Forum	NZ LCT	\$2,600	6000	
CON-039b	Integrated predator management of indigenous biodiversity in Far North District	NZ LCT	\$50,000		
CON-039e	Multi-Skilled Trapper for Greater Radar Hill & Mahinepua Mainland Island Areas	NZ LCT	\$22,050		
CON-039f	Whakaangi Landcare Pest & Predator Programme	NZ LCT	\$105,300	1300	Kiwi
CON-039g	Ta Mahurehure Phase 1 pest management	NZ LCT	\$51,200		
CON-063a	Harambee Road Wetland & Bush	NRC	\$28,425	5	Wetland
CON-063c	Kippenburger Wetland & Bush	NRC	\$2,850		Bush / Shrublands
CON-063d	Tamal Trust	NRC	\$13,000	21	Lowland forest
CON-063g	Jagger riparian	NRC	\$4,000	3	Bush / Shrublands
CON-116a	Waiwhatawhata Bush Restoration (fencing of 55 ha of mature native coastal forest)	NRC	\$10,000	55	Bush / Shrublands
CON-116b	Karaka Road Bush - Ruddell Property (fencing & possum control)	NRC	\$8,750	42	Lowland forest
CON-116c	MacPherson Bush Fencing	NRC	\$3,250	9	Riparian
CON-116d	Ross Family Trust Wetland	NRC	\$9,500	5	Riparian
CON-144a	Tutukaka Landcare Coalition coastal forest pest & predator control programme	NZ LCT	\$31,133	1000	Kiwi
CON-144b	Integrated predator control in Wekaweka Valley	NZ LCT	\$58,600	1300	Native Mammals
CON-144c	Waimate North Landcare Trust - Upper Waitangi Biodiversity Enhancement project	NZ LCT	\$53,325	12000	Kiwi
CON-144d	Herekino Landcare Pest & Predator Programme	NZ LCT	\$59,548	1000	Wetland
CON-160a	Design, install & service permanent rat & possum control systems to assist indigenous biodiversity in Far North District (51 covenants)	QEII	\$22,481	1540	Kiwi
CON-160d	Bream Tail pest control	QEII	\$8,345	22	Coastal forest
CON-160e	Waihue Bush remnants - fencing	QEII	\$24,620	26	Bush / Shrublands
CON-160f	Blaxall & Soole pest control	QEII	\$4,010	14	Bush / Shrublands
CON-160g	Monitoring & maintenance at Marunui	QEII	\$3,000	417	Lowland forest

Project Number	Condition Fund - Project Name	Organisation	Amount	Area Treated (ha)	Value Protected
CON-161	Pukahakaha Block Sanctuary; possum & muselid control, weed control & planting	Mahanga Ngaranoa Estate	\$0	35	Bush / Shrublands
CON-191a	Smales Bush and Stream Protection	NRC	\$4,980	10	Lowland forest
CON-191b	Fife Esturine Corridor	NRC	\$10,000	10	Wetland
CON-191c	Harmon/McKenzie-Pollock Esturine Corridor	NRC	\$18,500	21	Wetland
CON-191d	Onekaianga Forest Protection	NRC	\$6,000	20	Kiwi
CON-191e	Fox Wetland and Bush Protection	NRC	\$2,750	6	Lowland forest
CON-191f	Fiskal farm stock exclusion fencing - Stage 2 Pooh's bush	NRC	\$11,000	5	Native bird species
CON-191g	Kohukohu Waterfront Society and Tautehihi Marae Riparian Corridor	NRC	\$6,000	2	Riparian
CON-191h	Campbell Chitty Trust Bush Protection	NRC	\$4,750	20	Bush / Shrublands
CON-222	Owhata Restoration Indigenous Programme	Owhata C Ahu Whenua Trust	\$5,000	37	Coastal habitat
CON-224	Te Papa Paaororo	Ngati Hine Health Trust	\$29,000	6	Wetland
CON-226	Tahere Restoration	Private Individual	\$18,000	4	Bush / Shrublands
CON-245b	Waimate North Landcare Trust	NZ LCT	\$22,000	9000	Lowland forest
CON-245d	Whangarei Heads Landcare Weed Control Project	NZ LCT	\$19,164	5000	Lowland forest
CON-245e	Mahinepua Mainland Island Project	NZ LCT	\$18,750	1500	Kiwi
CON-246	Intergrated predator Management for kiwi to enhance indigenous biodiversity in Far Nth District	NZ Kiwi Foundation	\$40,000	13900	Kiwi
CON-248a	Rat and Possum control - Far North District	QEII	\$16,117	447	Kiwi
CON-248b	Pigs Head Rd Pest Control	QEII	\$3,295	23	Kiwi
CON-248c	Sandy Bay Kiwi	QEII	\$17,296	300	Kiwi
CON-248d	Central Northland Weed Control	QEII	\$33,500		Lowland forest
CON-248j	Oneriri Peninsula Pest Control	QEII	\$5,814	47	Riparian
CON-251	Whakaangi Trust Extension	Whakaangi Landcare Trust	\$31,500	800	Kiwi
CON-253f	Management of indigenous forest reserves in Northland	Company	\$20,000	1001	Kiwi
CON-264	Pest Elimination	Private Individual	\$2,250	25	Lowland forest
CON-269a	Possum & Rat control for Taiharuru and Papakarahi Landcare Groups	NZ LCT	\$20,850	750	Bush / Shrublands
CON-269b	Jack Bisset Wetlands	NZ LCT	\$16,911	162	Wetland
CON-273	Kaiikanui Kiwi Restoration Project	Private Individual	\$2,005	70	Kiwi
CON-274	Motuotaua Island weed control	FOMLI	\$5,628	1	Native bird species

Project Number	Condition Fund - Project Name	Organisation	Amount	Area Treated (ha)	Value Protected
CON-295e	Wood Wetland and Bush Protection	NRC	\$11,250	10	Wetland
CON-295f	Craig Wetland and Estuarine Protection	NRC	\$4,550	10	Wetland
CON-314	Takou Bay pest management	Takou Were Te Mokai Landcare	\$67,933	5000	Kiwi
CON-315	Lourie Fencing	Private Individual	\$14,500	40	Lowland forest
CON-318a	Argus Family Restoration	QEII	\$11,084	4	Coastal forest
CON-318y	Central Northland Weed Management	QEII	\$23,329	145	Bush / Shrublands
CON-318z	Far North District Pest Management	QEII	\$34,183	1484	Bush / Shrublands
CON-367a	McKay Wetland and Estuarine Protection	NRC	\$10,700	25	Native bird species
CON-367b	Linton Estuarine Edge, Wetland and Bush Protection	NRC	\$10,750	28	Coastal habitat
CON-367c	Roadley Wetland Bush and Estuarine Protection	NRC	\$12,000	33	Coastal habitat
CON-367d	Ball Estuarine and Native Bush Restoration	NRC	\$16,000	20	Bush / Shrublands
CON-367e	Ballard Bush and Estuarine Wetland Protection	NRC	\$4,500	28	Lowland forest
CON-367f	Lupton Estuarine Wetland and Bush Protection	NRC	\$4,000	28	Coastal habitat
CON-367g	Te Ahu Ahu Wetland Protection	NRC	\$9,000	23	Wetland
CON-367h	Te Totara Farm Wetland and Bush Protection	NRC	\$15,000	6	Bush / Shrublands
CON-367i	Craig Dune Lake Restoration	NRC	\$6,140	2	Coastal habitat
CON-367j	Blackwell Bush Convenants (fencing)	NRC	\$11,104	12	Bush / Shrublands
CON-367k	Horrobin Wetland Planting	NRC	\$3,100	4	Wetland
CON-370d	Tutukaka Landcare Coalition coastal forest pest and predator control programme for Pateke Recovery	NZ LCT	\$9,762	1000	Wetland
CON-372a	Ocean Beach Restoration Project	QEII	\$10,068	13	Coastal habitat
CON-386	Kaimamaku biodiversity recovery programme	Private Individual	\$12,500	93	Lowland forest
CON-400a	Recovery of kiwi population in Pipiwai and Oputeke forests	Company	\$22,500	1001	Kiwi
CON-401a	Waimate North and Upper Waitangi Biodiversity Enhancement project	NZ LCT	\$33,750	9000	Native Mammals
CON-402b	Blackbourn Fencing Project	QEII	\$6,145	9	Invertebrates
CON-406	Integrated predator management for the benefit of North Island Brown Kiwi and indigenous biodiversity	NZ Kiwi Foundation	\$58,500	4300	Lowland forest
CON-407	Whakaangi Landcare Trust, Pest and predator control and forest heath monitoring	Whakaangi Landcare Trust	\$117,720	2400	Lowland forest
CON-446f	Tutukaka Landcare Coalition - Pest animal control programme	NZ LCT	\$34,764	1000	Lowland forest
CON-448e	Hayward Fencing Project	QEII	\$20,003	76	Native Mammals
CON-448i	Ocean Beach Restoration	QEII	\$26,452	13	Coastal escarpment

Project Number	Condition Fund - Project Name	Organisation	Amount	Area Treated (ha)	Value Protected
CON-448k	Sandy Bay Kiwi	QEII	\$27,630	300	Lowland forest
CON-450a	Candy Forest Protection	NRC	\$3,750	193	Native bird species
CON-450b	Magon Forest and Stream Protection	NRC	\$6,700	173	Coastal forest
CON-450c	Griffiths Forest, gumland and wetland protection	NRC	\$7,100	50	Wetland
CON-450d	Pulton Forest and River Protection	NRC	\$5,000	14	Coastal forest
CON-450f	Bonham Forest and Wetland Protection and Restoration	NRC	\$5,600	13	Riparian
CON-450h	Kearney Clark bush restoration	NRC	\$3,800	10	Riparian
CON-450i	Hutchinson Wetland and Bash project	NRC	\$1,900	3	Wetland
CON-450j	Mahanga Wetland and Bush Protection	NRC	\$8,400	31	Wetland
CON-456	Stock & Pest Fencing for Kaingaroa Forest	Private Individual	\$4,824	12	Biodiversity
CON-472A	Biodiversity protection/ restoratation in Kohumaru	NZ LCT	\$59,690	272	Lowland forest
CON-475	Mahinepua Mainland Island Project	Mahinepua-Radar Hill Landcare Group	\$60,825	1500	Coastal habitat
CON-478	Kiwi recovery in Whangarei Heads	Whangarei Heads Landcare Forum	\$43,680	6000	Kiwi
CON-480	Leaf Farm Remnant Protection	NRC	\$23,273	24	Native bird species
CON-487	Tahere Restoration	Private Individual	\$7,000	4	Bush / Shrublands

## **APPENDIX 5: LEGAL PROTECTION OPTIONS**

If you leave the protection of your native ecosystem to the goodwill of future owners, they could undo all your efforts. Legal protection ensures that your conservation achievements will continue, usually in perpetuity. It also means you can ask for funding from agencies like the Nature Heritage Fund, Queen Elizabeth II National Trust, local authorities or Ngā Whenua Rāhui (for Māori land) to help with survey, legal and fencing costs.

To obtain legal protection, you will need to define the area by survey, decide on what sort of protection you want, and detail how the ecosystem will be managed to maintain or improve its values. You should seek formal protection early in the project so that you do not waste time, enthusiasm and money.

A number of legal protection options can be tailored to suit your wishes as the landholder:

### **Selling or gifting land**

You can sell or gift land to a variety of agencies, organisations or trusts for protection purposes. The buyer usually meets some or all of the transaction costs. An area bought or gifted under the Reserves Act will be given a reserve classification. It then needs to be managed for the primary purpose stated in that classification. This will involve producing a management plan, which needs public input.

### **Conservation covenants**

You can enter into a covenant with the Department of Conservation, Queen Elizabeth II National Trust or local authorities. A covenant is a legal agreement between the landholder and the covenanting agency about how the area's natural values will be protected (e.g., where fencing is needed and whether public access will be allowed). As the landholder, you retain ownership and the covenant is registered against the title, usually in perpetuity. It is binding on future owners. Owners of Māori land can place areas under a Ngā Whenua Rāhui kawenata. Although this may be for protection in perpetuity, the terms and conditions can be reviewed every generation (not less than 25 years).

Both parties manage covenanted land in accordance with the agreement, and the covenanting agency may provide specialist advice. Financial assistance may be available to the landholder, usually for survey, legal and fencing costs. As the landholder, you may also apply to the local authority for rates relief.

Monitoring is usually needed to assess the effectiveness of management actions and changes to protected values. Either you or the covenant agency can do the monitoring in accordance with the agreement.

### **Protected private land agreements**

You can make a protected private land agreement with the Department of Conservation. As the landholder, you retain ownership, and the agreement is recorded on the title by gazette notice.

### **Land exchange**

You can exchange land where it is of interest to both parties. You may have costs related to equality of exchange, survey and legal requirements. Local authorities undertaking land exchange under section 15 of the Reserves Act, must seek public comment.

### **Management agreements**

Management agreements between the Department of Conservation and a landholder under section 29 of the Conservation Act are not registered against the title and do not bind future owners. These are temporary agreements that keep your management options open until you reach a final agreement for improved protection.

### Esplanade reserves

Esplanade reserves can be used to provide voluntary riparian or ecological protection quite separate from the subdivision requirements of the Resource Management Act. Such reserves are set aside under the Reserves Act as local purpose (esplanade reserves) through a local authority or the Department of Conservation. They can be of various widths.

**Table 1. Agencies that implement legal protection, offer funding assistance or provide advice about the management of protected areas**

Agency	Offers legal protection	Possible funding source	Offers management advice
Department of Conservation	Y	Y	Y
Nature Heritage Fund	N	Y	N
Nga Whenua Rahui	N	Y	N
QEII National Trust	Y	Y	Y
Lottery Grants Board	N	Y	N
Local Authorities	Y	Y	Y
Landcare Research	N	Y	Y

## APPENDIX 6: STATUS OF LAYERS WITHIN THE GIS DATABASE.

Possible Dataset	Source	Received by NZ Landcare Trust?	Comments
Tenure/legal protection land administered by DOC	DOC	Received	
Maori Land-Northland	DOC	Received	Boundaries to be clarified with DOC estate
Nga Whenua Rahui	DOC	Received	
Biodiversity Condition Funded projects	DOC WTGN	Received	Some manually entered by NZ Landcare Trust
Fish and Game administered wetlands	F&GNZ	Received	
SNA Fund	FNDC	Received	
Biodiversity Improvement Fund	KDC	Received	
Land Cover DataBase (LCDB) 1.1 & 2	MfE	Received	
Land Environments of NZ (LENZ)	MfE	Received	
CPCA (Community Pest Control Areas)	NRC	Received	CPCA's are updated as accepted by council.
Kiwi distribution and abundance Northland	NZLCT	Received	
Landcare Groups and activities	NZLCT	Received	
Covenant locations	QE II	Received	
Tenure/legally protected land administered by WDC	WDC	Received	
Conservation Covenants	WDC	Received	
Protection Effort Weed management	WDC parks	Received	
Estuarine Vegetation Mapping	NRC	Pending	There is an annual survey of two estuaries using the national estuarine monitoring protocol. To be expanded to estuaries in due course.
Wetlands Survey	NRC	Pending	
Environment Fund	NRC	Pending	
Lakes survey	NRC	Pending	
Ant Distribution (Pest Management)	NRC	Pending	
Biosecurity Records	NRC	Pending	Records of pest and animals mostly targeted in pest management strategies, although some incidents of marine spp and nationally targeted spp. Eg Nassella, Californian thistle, release of RHD, rhamnus, old mans beard, seasquirt.
Protected Natural Areas Database	DOC	Pending	

Protection effort Predator control Possum/ goat control areas Weed management	DOC	Pending	
Tenure/legally protected land administered by KDC	KDC	Pending	
Conservation covenants	KDC	Pending	
Tenure/legally protected land administered by FNDC	FNDC	Pending	Pending development of in-house GIS capability
Rare Plants in Northland	Bioweb	Unlikely to be included	
Endangered Species distribution	DOC	Unlikely to be included	

## APPENDIX 7: LESSONS LEARNT - “WHOLE OF NORTHLAND” PROJECT

### Northland Biodiversity Enhancement Group (NBeg):

- NBeg arose from recognition of a lack of resources within agencies in Northland, and the realization that by working collaboratively we could use available resources more efficiently. Many forums consider that fostering relationships between members is a primary purpose and helps coordinate and integrate efforts.
- Initial NBeg meetings were generally ad hoc and were reliant on initiatives by individuals with little formal support and requirement.
- There was no initial MOU. The informal process of the group got around the “patch protection” and potential concerns that are common within organizations. It demonstrated a process that was working.
- The Dargaville Field Days provided a high public profile and showed that organisations were successfully working together. The field days also provided internal value in the process alone – increased interaction between staff. They showed something that worked.
- The informal approach was repeated with District Councils – getting them involved at a staff level rather than waiting for high level support.
- The importance of a personal attitude and approach must not be discounted in what makes the process work. The lack of “patch protection” at the officer level of council’s and DOC allowed the process to develop.
- It is important to seek individuals in organisations that are working in the area and want to collaborate with other stakeholders.
- The differences in ‘systems’ between agencies involved needs to be recognized (eg DOC having to work to a central priority, vs NRC responding to local influence.)
- The differing abilities of each organisation to deliver must also be accepted. (eg Fish & Game/Landcare Trust with 2 staff members, vs NRC/DOC). The lack of resources meant that the agencies could achieve more by working collaboratively together.
- The approach to the various organisations and agencies cannot rely on one single entry point (person) due to staff turnover and importance of engagement and buy in of all staff engaged in biodiversity in participating organizations. A key issue here was to focus on those who initially want to be involved in the process and are already engaged. The next step was to bring in other agencies and organisations by keeping them informed through minutes from meetings, and inviting them to the NBeg meetings, workshops and presentations.

### Opportunities still remain with:

#### Iwi-

- There has been much discussion on how to engage iwi in the process. Discussions with key Maori landholders show iwi are already engaged at different levels and that the process should continue to support them in the varying roles as land managers.
- Opportunities around liaison with rununga resource management units; potential for mentoring./upskilling./ liaison and listening to Maori traditional knowledge around biodiversity which ties in with the Matauranga Kura Taiao fund.

#### Councils-

Historically, council involvement in biodiversity has relied on individual commitment – it is crucial that Councils requirements are institutionalized as Council’s absorb their responsibility. The mentoring of council staff under the umbrella of NBeg is valuable to build relationships, share information and resources, learning about other efforts and aligning efforts.

- Would a MOU assist at a later or future stage in the development of a “Biodiversity Strategy?” Still to be shown.

- Should NBeg widen the focus to include other groups such as the Polytechnic where there is opportunity for capacity building and employment opportunities.
- It has been suggested the Pastoral Farming Development Group be included in the invitations to the NBeg meeting – and a report on N-Beg could be made to the PFDG.
- A questionnaire could be linked to Environment Fund’s process to assist monitoring outcomes (e.g. NRC Environment Fund, QEII National Trust, District council funds).
- The development of an annual report would outline what has been achieved and what is working or not working. It is important to document associated costs throughout the process.
- The process has been parochial - this is a Northland focused project, and that is very important – the initiatives are coming from within and the development of collaborative leadership has created positive outcomes for all involved.
- There have been other spin offs from the project – e.g. more on-ground action better supported because the agencies are working better together. Provision of information, not direction is considered to be crucial to this.
- There are opportunities with the LTCCP process to use the NBeg “Whole of Northland” approach to assist in delivering community outcomes concerning biodiversity and environmental enhancement for local and regional councils.

#### Work in progress.

- It is true to say the project has evolved as a ‘work in progress’. Translation of the bid details to a work programme was something of a reality check.
- There is a need to accept flexibility in the delivery of the project although this may have implications for funders versus the need for more input of the right people at the planning stage for the project; risk of ‘paralysis by analysis’.

#### GIS Component

- The process of the project highlighted what little GIS database information has been captured digitally within the current systems and the databases currently available are often duplicated. There is a lot of information held in “hard copy” within the agencies but not easily accessible. In the future the capturing of digital database information on biodiversity will be a greater component.
- There was some reluctance and confusion as to how much commitment was expected by the organizations and agencies GIS Coordinators at the start of the project. It is suggested that these key staff are better briefed at the development stage of the project and clarify what levels of GIS expertise and capabilities is needed for the wider project.
- The high level of buy-in from DOC was very critical to the wider engagement of the project and to the development of the GIS database within the NZLCT. The MOU agreements developed around GIS information are an important part of the process to seal the buy-in to the project and this is reflected in the generosity for information sharing and support for the project by agencies.

#### Council engagement in to the project

- There was varying approaches made to the district councils and it was important to inform councillors and senior management about the project, however information did not always filter down through to the right people within councils. It was therefore necessary at times to enter “side doors” to engage key staff in to the process through NBeg and initiate face to face discussions.
- Not all councillors are expected to be fully engaged in the project because of other priorities but focus on those that have an interest and can act as political representative to raise awareness about council’s legislative responsibility for biodiversity.