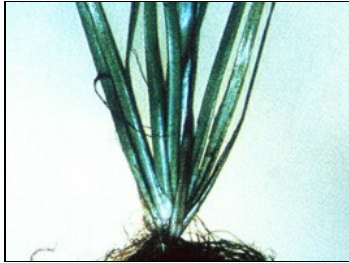


5.15. PEST MANAGEMENT STRATEGY FOR SURVEILLANCE PLANTS

Description of the Pest

The pest plants included in this Strategy are:



Eelgrass (*Vallisneria spiralis*)



Senegal tea (*Gymnocoronis spilanthoides*)



Hydrilla (*Hydrilla verticillata*)



Nardoo (*Marsilea mutica*)



Water poppy (*Hydrocleys nymphoides*)



Fringed water lily (*Nymphaoides peltata*)



Entire marshwort (*Nymphaoides geminata*)



Houttuynia (*Houttuynia cordata*)



Old man's beard (*Clematis vitalba*)



Rhamnus (*Rhamnus alaternus*)



Needlegrass (*Stipa tenuissima*)



Skeleton weed (*Chondrilla juncea*)

This group of plants includes eight highly aggressive aquatic plants (water poppy, senegal tea, eel grass, hydrilla, nardoo, fringed water lily, entire marshwort, houttuynia), an invasive tree of the coastline and forests (rhamnus), a destructive vine (old man's beard), a potentially major weed of pasture (needlegrass) and a major weed of crops (skeleton weed). All the plants are major pest plants of other Regions but not recorded in Northland.

Distribution of the Pest

Not recorded in, or thought to have been eradicated from Northland.

Problems Caused

The aquatic species are aggressive colonisers of freshwater habitats, blocking water flow, replacing desirable vegetation and ruining water quality. This impacts greatly upon primary production, conservation, recreation and environmental values.

Evergreen buckthorn forms dense stands in forests and along the coastal fringe, excluding all other vegetation. Needlegrass is very closely related to nassella tussock and exhibits the same invasive characteristics and unpalatability. Old man's beard is probably New Zealand's worst invasive vine, destroying whole forests at a time. Skeleton weed is a wiry obstructive weed of crops, causing loss of production and blockage of machinery.

Parties Affected

Landowners, particularly native forest owners, dry coastal land farmers, lowland and arable farmers and croppers would be the main parties affected. Recreational users of forests and other natural lands would also be affected.

Impact Evaluation

Eelgrass, hydrilla, nardoo, senegal tea, water poppy, fringed water lily, entire marshwort, houttuynia.

<u>Impact</u>	<u>Current</u>	<u>Potential</u>
Cultural	-	High
Ecological	-	High
Human Health	-	-
Soil & Water	-	Medium
Production	-	Medium
Public Infrastructure	-	-
Public Safety	-	-
Recreation	-	Medium
Trade (International)	-	-
Overall Regional	-	High

Skeleton weed, needlegrass, old mans beard, rhamnus

<u>Impact</u>	<u>Current</u>	<u>Potential</u>
Cultural	-	Medium
Ecological	-	High
Human Health	-	-
Soil & Water	-	-
Production	-	High
Public Infrastructure	-	Medium
Public Safety	-	-
Recreation	-	High
Trade (International)	-	-
Overall Regional	-	High

Regional Effects

Skeleton weed poses a significant potential threat to kumara, maize and other crop growers, market gardeners, etc. and needlegrass threatens all dry coastal farmland in Northland. Production values need to be protected. The aquatic species could cause major disturbance to the Region's waterways, including flooding, production loss and ecological damage. The other species could cause permanent and widespread damage to Northland native forests and coastline. This would affect conservation, recreational, cultural and tourism values.

Need to Intervene

The Region's indigenous ecosystems are a major asset and part of its heritage and could suffer incalculable damage if these potentially significant pests are not kept out. Economic costs could also be incurred through a loss of tourism. Control over distribution and sale, publicity and eradication of scattered outbreaks are most effectively organised at a Regional level.

Goal (Long Term)

- To prevent these plants from ever entering or becoming established in Northland.

Objectives (Five Years)

- To increase public awareness of the plants as pests.
- To encourage all persons to report sightings or suspected sightings of these plants to Council.
- To prohibit the sale/distribution of these species.

- To totally control any infestations of these plants if they are found.

Tactics and Technical Methods to be Used

Education	Advice to people. Community meetings and field days. Media releases and publicity brochures.
Regulation	Rule 6.4.2.9 Prohibition on Distribution and Sale of Pest Plants Failure to comply with these rules creates an offence under section 154 (r) of the Biosecurity Act 1993.
Services	Regional Council inspection and eradication service.

Tactics and Technical Methods Rejected

Economic	Bounties (not applicable).
Regulation	Occupier control (unlikely to achieve eradication).

Effects of the Strategy

Beneficial	Protection of indigenous ecosystems and associated cultural and recreational values. Protection of the Regional waterbodies. Protection of the economic viability of cropping and pastoral farming in the Region.
Detrimental	None.

Cost of Strategy

The Strategy is expected to cost the Regional Council approximately \$4,500 each year

Funding

The Strategy is funded from a Land Management Rate.

Management Agency

The Northland Regional Council is responsible for managing the Strategy.

Relationship of Strategy to Other Pest Management Strategies

The Auckland Regional Council has prepared a similar Strategy.

Monitoring and Reporting

Progress against objectives set in the Strategy will be reported in the Regional Council's Annual plan or LTCCP as appropriate. Surveys will be carried out to check the effectiveness of publicity and other education initiatives.

Term of Strategy

5 years

Rules

6.4.2.9 Prohibition on Distribution and Sale of Pest Plants

- (i) No person shall distribute to other persons or offer for sale, or hold in a premises where plants are offered for sale, any pest plant which is subject to a Northland Regional Council Pest Management Strategy or

included in the National Accord List of Plants Banned from Sale & Distribution.

- (ii) No person shall distribute or offer for sale to other persons any agricultural lime, roading aggregate, sand or fill material which contains the seeds or any other vegetative material capable of propagation from a pest plant subject of a Northland Regional Council Pest Management Strategy or included in the National Accord List of Plants Banned from Sale & Distribution.
- (iii) No person shall transport or use any equipment, machinery or product which contains the seeds or any other vegetative material capable of propagation from a pest plant subject of a Pest Management Strategy or included in the National Accord List of Plants Banned from Sale & Distribution.
- (iv) No person shall plant, transplant or re-distribute any pest plant subject of a Pest Management Strategy or included in the National Accord List of Plants Banned from Sale & Distribution.