

Waipu

NORTHLAND

Community Response Plan



contents...



Key Hazards.....3

Tsunami	3
Flooding	3
Major Storms	3
Oil Spills	4
Influenza Pandemic.....	4

Household Emergency Plan5

Emergency Survival Kit6

Getaway Kit	6
Stay in touch	6

Tsunami information..... 7-8

Tsunami information.....9

Before, during & after	9
What zone are you in	10

Tsunami evacuation maps.....11-13

Waipy Area.....	11
Waipu Cove	12
Langs Beach	13

Floods

Before, during and after.....	14
Area Map	15

Severe Storms

Before and during	16
After a storm, tornadoes and landslides.....	17

Civil Defence Community Centres18

Plan activation process.....18

Roles and responsibilities.....18

Emergency Contacts19

For further information.....20



The key hazards in Waipu

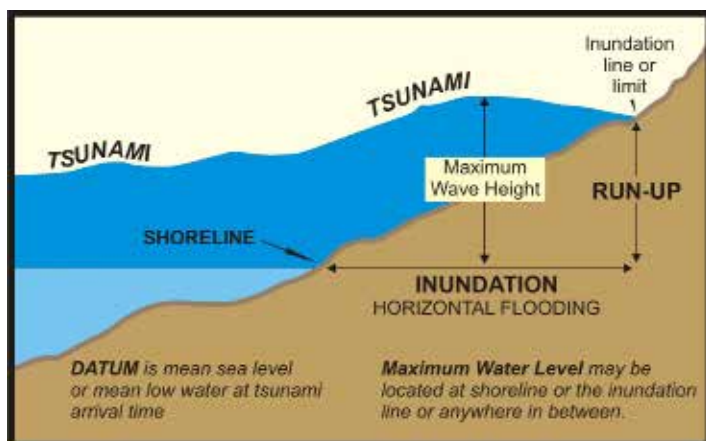
- Tsunami
- Flooding
- Major Storm
- Oil Spill
- Influenza Pandemic



Tsunami

New Zealand's entire coast is at risk of tsunami. A tsunami can violently flood coastlines, causing devastating property damage, injuries and loss of life.

A tsunami is a natural phenomenon consisting of a series of waves generated when a large volume of water in the sea, or in a lake, is rapidly displaced. A tsunami can be caused by large submarine or coastal earthquakes; underwater landslides which may be triggered by an earthquake or volcanic activity; large coastal cliff or lakeside landslides; or volcanic eruptions beneath or near the sea.



Flooding

Floods can cause injury and loss of life, damage to property and infrastructure, loss of stock, and contamination of water and land.

Floods are usually caused by continuous heavy rain or



thunderstorms but can also result from tsunami and coastal storm inundation. A flood becomes dangerous if:

- the water is very deep or travelling very fast
- the floods have risen very quickly
- the floodwater contains debris, such as trees and sheets of corrugated iron.

Getting ready before a flood strikes will help reduce damage to your home and business and help you survive.

Know the natural warning signs

If you are at the coast and experience any of the following, move immediately to the nearest high ground, or as far inland as you can:

- Feel a strong earthquake that makes it hard to stand up, or a weak rolling earthquake that lasts a minute or more;
- See a sudden rise or fall in sea level; or
- Hear loud and unusual noises from the sea

Be Safe!

Know your tsunami evacuation zones

See the maps on pages 11 - 13



Major storms

Major storms affect wide areas and can be accompanied by strong winds, heavy rain, thunder, lightning, tornadoes and rough seas. They can cause damage to property and infrastructure, affect crops and livestock, disrupt essential services, and cause coastal inundation.

Severe weather watches and warnings are issued by the MetService and available through the broadcast media, by email alerts, and online at www.metservice.co.nz



Oil Spills

Oil spills in the Ruakaka/Bream Bay area are a possibility due to the location of North Port and the Oil Refinery. In the event of an oil spill, any issues will be dealt with locally by the Northland Regional Council and/or Maritime New Zealand, depending on the severity of the incident.

Oils spills and other industrial threats are generally not responded to by Civil Defence Personnel. **NRC Hotline 0800 504 1202**



Influenza pandemic

An influenza virus capable of causing a pandemic is one that people have no immunity to, that can easily spread from person to person, and that is capable of causing severe disease. We all need to be prepared for a pandemic in order to help prevent spread and look after ourselves as best we can.

Here are a few simple things you can do now to prepare for a pandemic:

- Cover your coughs and sneezes
- Wash and dry hands often
- Keep away from others and stay home if you become unwell
- Regularly disinfect common surfaces like phones, handles, taps, toys etc
- Put together an emergency plan and kit
- Keep paracetamol and ibuprofen handy for reducing fever and aches and pains.
- Think about things to do if your family have to stay home for a week or so i.e. books, games movies.

get ready...



CREATE AND PRACTICE Household Emergency Plan

YOUR HOUSEHOLD

Address

Name

Name

Name

Name

Name

Phone numbers

Phone numbers

Phone numbers

Phone numbers

Phone numbers

1. If we can't get home or contact each other we will meet or leave a message at:

Name

Contact details

Name (back-up)

Contact details

Name (out of town)

Contact details

2. The person responsible for collecting the children from school is:

Name

Contact details

3. Emergency Survival Items and Getaway Kit

Person responsible for checking water and food

Items will be checked and replenished on:

(check and replenish at least once a year)

The Getaway Kits are stored in the

4. The radio station (inc AM/FM frequency) we will tune in to for local civil defence information during an emergency

5. Friends/neighbours who may need our help or who can help us

Name

Address

Phone

Name

Address

Phone

6. On a separate sheet of paper draw a plan of the house showing places to shelter in an earthquake or storm, exits and safe assembly areas and where to turn off water, electricity and gas.

IMPORTANT PHONE NUMBERS FOR POLICE, FIRE OR AMBULANCE CALL 111

Local Police station

Medical Centre

Insurance Company

Vet/Kennel/Cattery

Electricity Supplier

Council Emergency Helpline

Water Supplier

Gas Supplier

Electrician

Plumber

Builder

get ready...



CREATE Emergency Survival Kit

In most emergencies you should be able to stay in your home. Plan to be able to look after yourself and your household for at least three days or more. Assemble and maintain your emergency survival items for your home as well as a portable getaway kit in case you have to leave in a hurry. You should also have essential emergency items in your workplace and in your car.

Emergency Survival Items

- ☐ Torch with spare batteries or a self-charging torch
- ☐ Radio with spare batteries
- ☐ Wind and waterproof clothing, sun hats and strong outdoor shoes
- ☐ First aid kit and essential medicines
- ☐ Blankets or sleeping bags
- ☐ Pet supplies

- ☐ Toilet paper and large rubbish bags for your emergency toilet
- ☐ Face and dust masks



Getaway Kit

Everyone should have a packed getaway kit in an easily accessible place at home and at work which includes:

- Torch and radio with spare batteries
- Any special needs such as hearing aids and spare batteries, glasses or mobility aids
- Emergency water and easy-to-carry food rations such as energy bars and dried foods.
- First aid kit and essential medicines
- Essential items for infants or young children such as formula and food, nappies and a favourite toy
- Change of clothes (wind/waterproof clothing and strong outdoor shoes)
- Toiletries – towel, soap, toothbrush, sanitary items, toilet paper
- Blankets or sleeping bags
- Face and dust masks
- Pet supplies.

HOW TO Stay in touch

RADIO STATIONS

Newstalk ZB
1215AM or 1026AM

Classic Hits
96.0FM

More FM
91.6FM

Radio Live
90.6FM

National Radio
837AM, 101.1FM, 104.3FM

Coast
900AM

Alerts to your phone

Two alerting platforms are used by Northland Civil Defence (and other official agencies) to send alerts about severe weather, tsunami or other emergencies.



The Red Cross Hazard App



Emergency Mobile Alerts

Both options are free to users although smartphones need to be of certain capability to be able to receive them.

We recommend that if possible, people take advantage of both.

To find out more, visit:
www.nrc.govt.nz/cdalert

WEBSITES

Log on to one of the following websites for more information

www.nrc.govt.nz/civildefence

www.facebook.com/civildefencenorthland

www.geonet.org.nz/tsunami

www.prh.gov.ptwc/

www.ngdc.noaa.gov/hazard



Tsunami sirens



Northland Civil Defence will issue a tsunami warning - and trigger sirens - after receiving an official tsunami warning from the Ministry of Civil Defence and Emergency Management National Warning System.

Tsunami warnings

Warning messages and signals about a possible tsunami can come from several sources – natural, official or unofficial.

Natural warnings

For a local source tsunami which could arrive in minutes, there won't be time for an official warning. It is important to recognise the natural warning signs (see page 3) and act quickly.

Official warnings

Official warnings are only possible for distant and regional source tsunami. Official warnings are disseminated by the Ministry of Civil Defence & Emergency Management to the national media, local authorities and other key response agencies. Your local council may also issue warnings through local media, siren and other local arrangements.

Unofficial or informal warnings

You may receive warnings from friends, other members of the public, international media and from the internet. Verify the warning only if you can do so quickly. If official warnings are available, trust their message over informal warnings.

What to do when you hear a siren

Tsunami sirens and their strobe lights are just one part of a range of formal and informal warning systems, any one of which can alert people to a tsunami.

The sirens and lights are a strong signal to seek further information.

When there is a tsunami warning the siren will sound intermittently. The strobe light will flicker throughout the event, from beginning to end.

Tsunami siren do's and don'ts

Tsunami sirens **don't** necessarily mean you need to evacuate the area right away or even at all.

They **do** mean you need to find out what the level of threat is.

Community Sirens

The civil defence Tsunami sirens have now been placed within the community. There are currently five sirens within the Waipu community positioned on power poles by North Power in the following locations:

Siren Number	Pole Number	Street Address or Location Description
64	10169	Waipu township, outside Four Square
65	52371	Outside Medical Centre, Waipu
66	10586	100m south of motor camp, Waipu Cove
67	300604	Langs Beach, outside number 1139
68	10662	Langs Beach, opposite number 44 Wairahi Road



Evacuation methods

Civil Defence warnings to this area will be by the following methods.

- Tsunami sirens
- Warnings via radio
- P.A. systems on emergency service vehicles
- Local procedures. e.g. phone trees

Telephone tree

A phone tree is a network of people organized in such a way that they can quickly and easily spread information amongst each other. The current telephone trees, will be used to inform the community in the event of a Civil Defence Emergency Response and are held by members of the Waipua community response group.

Testing, testing 1 2 3



The tsunami siren network is tested twice a year at daylight savings weekend. Each daylight savings Sunday at 9.20am the siren network is tested by Civil Defence and Northpower and any maintenance issues are reported and corrected to keep the system in good working order.

For further information

Turn on a radio, television or computer and search for information on council websites and social media sites (Facebook and Twitter). You can also go straight to Civil Defence Northland Facebook page www.facebook.com/civildefencenorthland or also www.nrc.govt.nz/civildefence

If you don't have access to any of these, contact someone you think may have.

Follow instructions given by the media and spread the word to people you think may be at risk.

When a tsunami siren sounds it means seek further information now!



BEFORE A TSUNAMI

Getting ready before a tsunami strikes will help reduce damage to your home and business and help you survive.

- If you live in a coastal area, ask your council about your tsunami risk and local warning arrangements.
- If you have a disability or special requirements, arrange with your support network to alert you of any warnings and emergency broadcasts.
- Develop a Household Emergency Plan and have a Getaway Kit ready.
- Know where the nearest high ground is and how you will reach it. Plan to get as high up or as far inland as you can. Plan your escape route for when you are at home, as well as for when you may be working or holidaying near the coast.

AFTER A TSUNAMI

- Continue to listen to the radio for civil defence advice and do not return to the evacuation zones until authorities have given the all-clear.
- Be aware that there may be more than one wave and it may not be safe for up to 24 hours, or longer. The waves that follow the first one may also be bigger.
- Check yourself for injuries and get first aid if needed. Help others if you can.
- Do not go sightseeing.
- When re-entering homes or buildings, use extreme caution as floodwaters may have damaged buildings. Look for, and report, broken utility lines to appropriate authorities.
- If your property is damaged, take notes and photographs for insurance purposes. If you rent your property, contact your landlord and your contents insurance company as soon as possible.

DURING A TSUNAMI



- Take your getaway kit with you if possible. Do not travel into the areas at risk to get your kit or belongings.
- Take your pets with you if you can do so safely.
- Move immediately to the nearest higher ground, or as far inland as you can. If evacuation maps are present, follow the routes shown.
- Walk or bike if possible and drive only if essential. If driving, keep going once you are well outside the evacuation zone to allow room for others behind you.
- If you cannot escape the tsunami, go to an upper storey of a sturdy building or climb onto a roof or up a tree, or grab a floating object and hang on until help arrives.
- Boats are usually safer in water deeper than 20 metres than if they are on the shore. Move boats out to sea only if there is time and it is safe to do so.
- Never go to the shore to watch for a tsunami. Stay away from at-risk areas until the official all-clear is given.
- Listen to your local radio stations as emergency management officials will be broadcasting the most appropriate advice for your community and situation.





What zone are you in?

Northland residents and visitors have access to more than 20 maps showing Tsunami Evacuation Zones for many of the regions coastal communities.

Northland Civil Defence have maps that graphically highlight three zones that need to be evacuated in the event of a tsunami warning, depending on different levels of risk.

The maps allow people to identify where their property or house sits in regard to the evacuation zone, an escape route and where they should go.

It's important for people to plan a route than can be a quick exit and preferably one that's on foot so roads aren't clogged up.

In some cases this might not be practical due to distances required to travel, so it is important to identify optional routes and aim to keep going as far as possible so others who may be behind aren't blocked in.

The evacuation zones are based on different level of inundation - i.e. how far the water is likely to reach onshore in different scales of tsunami - with a red zone nearest the beach, moving through orange and yellow evacuation zones further inland.

Tsunami wave zone definitions

RED ZONE	Higher Probability	20cm - 1 metre
ORANGE ZONE	Moderate Probability	1 metre - 5 metres
YELLOW ZONE	Lower Probability	5 metres - 8 metres

The red zone

is simply the topographic map coastline and is to be usually evacuated in response to the 0.2-1m wave height threat level called 'threat to beach, harbours, estuaries and small boats'.

The orange zone

matches the 1-5m wave height threat level called a 'moderate land threat', arriving on or below high tide. In other words if a moderate land threat level (or a lesser threat level) is called, only the red and orange zones need to be evacuated - even if the wave could arrive on high tide. The orange zone includes the red zone.

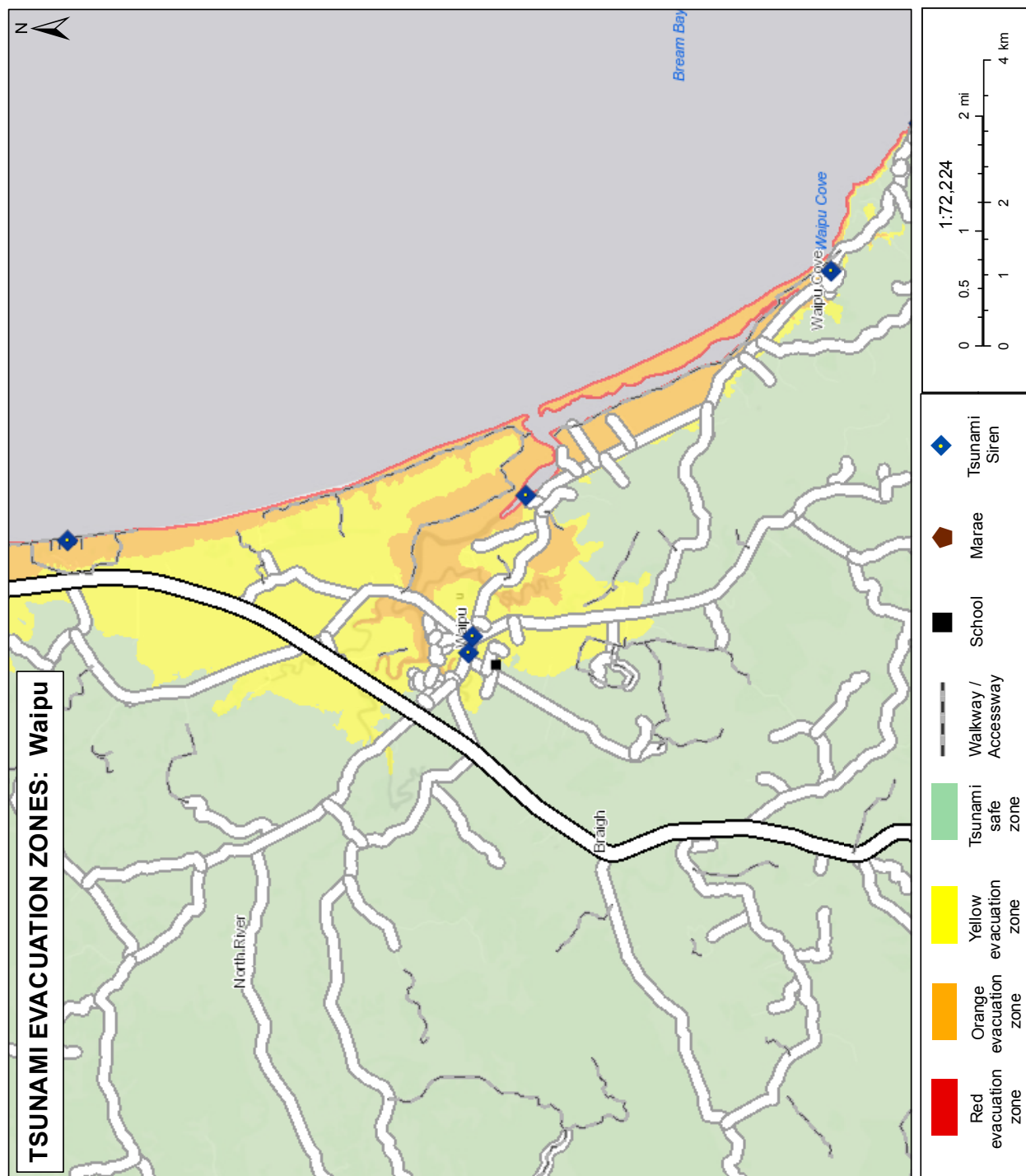
The yellow zone

includes the maximum credible tsunami sources taking into account the worst cases from both modelling and geological deposits. In an official warning larger than the moderate land threat level, or in the case of a natural or informal warning where the potential wave height is unknown, all zones including the yellow zone should be (self)-evacuated. The yellow zone includes the red and orange zones.

For all maps visit
www.nrc.govt.nz/evacuationzones



Tsunami evacuation maps



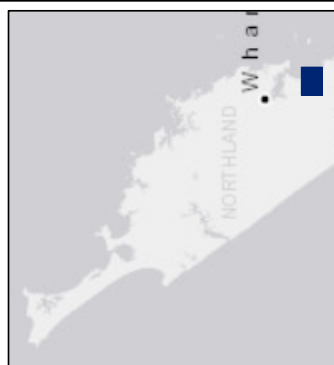
A tsunami may arrive soon after a major earthquake. Don't wait for an official warning.

Walk inland or to high ground. Use the map to identify your nearest safe zones and safe locations ahead of time.

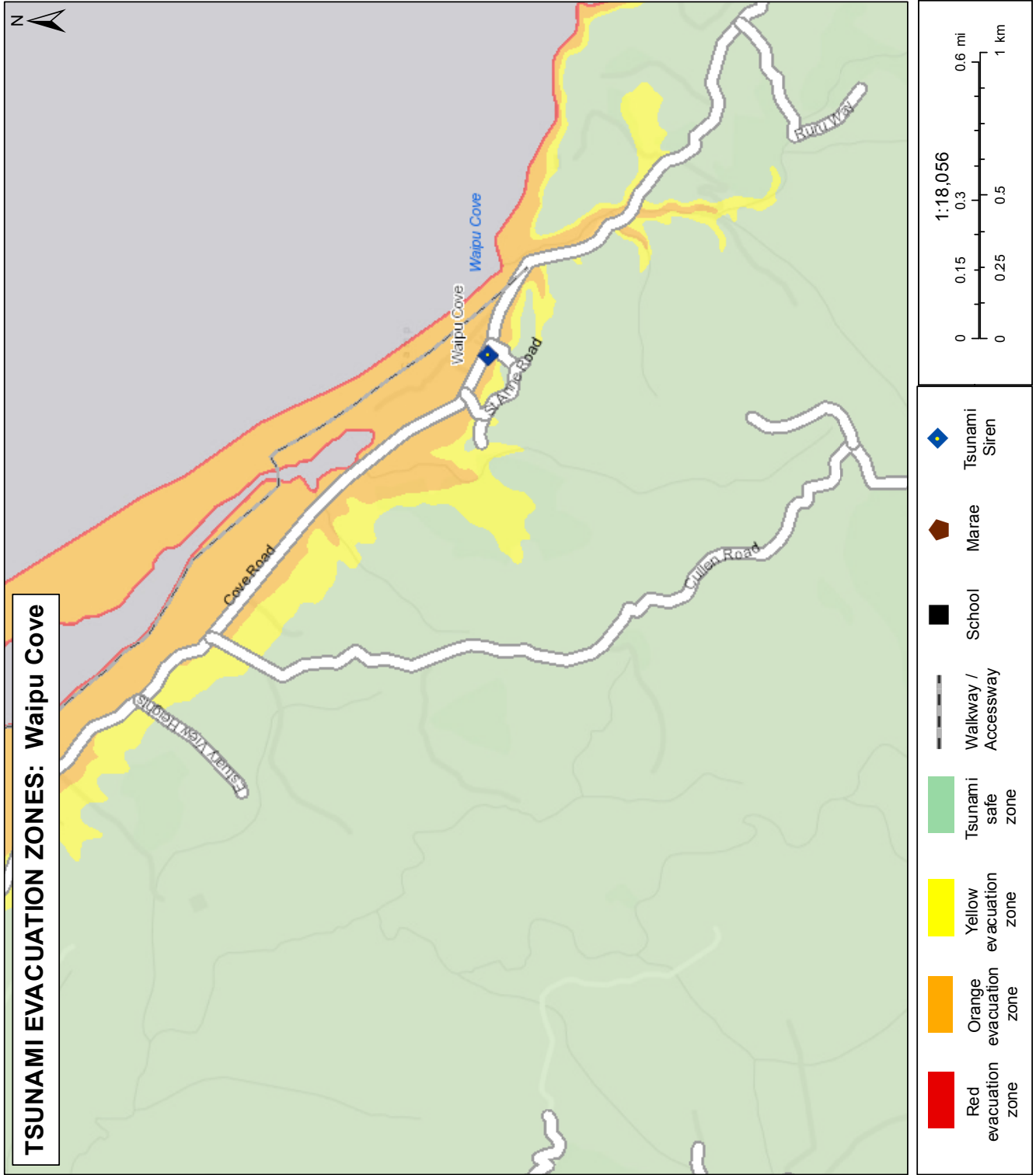
Evacuate on foot if possible. Roads will block very quickly. Take essential items - tsunami flooding can last for many hours



More maps and info at:
www.nrc.govt.nz/tsunami



Crown Copyright Reserved
Datum NZ TM2000 Projection NZTM
The Northland Regional Council cannot guarantee
that the information shown is accurate and should
be used as a guide only. Consult with your
consultation with its owner.



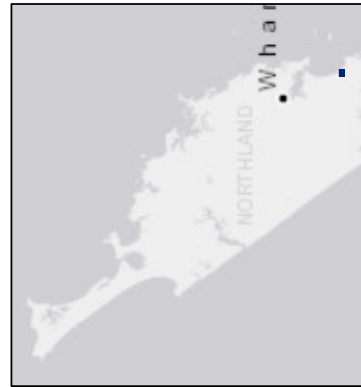
A tsunami may arrive soon after a major earthquake. Don't wait for an official warning.

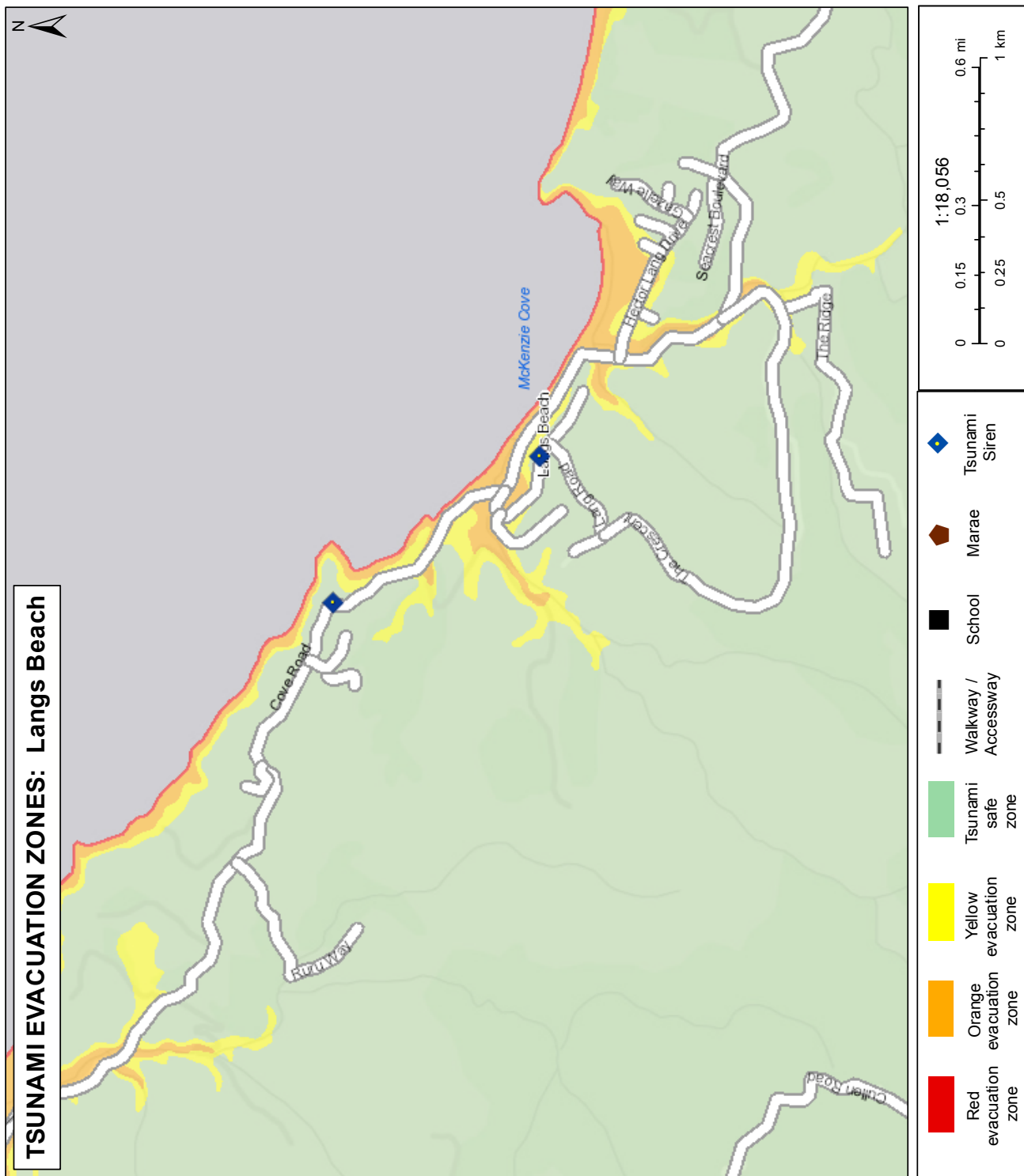
Walk inland or to high ground. Use the map to identify your nearest safe zones and safe locations ahead of time.

Evacuate on foot if possible. Roads will block very quickly. Take essential items - tsunami flooding can last for many hours



More maps and info at:
www.nrc.govt.nz/tsunami





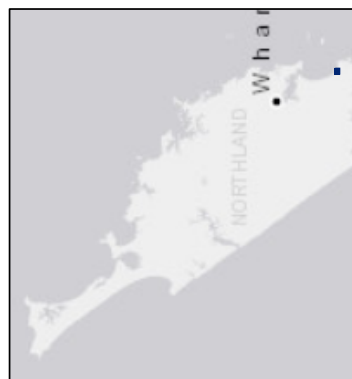
A tsunami may arrive soon after a major earthquake. Don't wait for an official warning.

Walk inland or to high ground. Use the map to identify your nearest safe zones and safe locations ahead of time.

Evacuate on foot if possible. Roads will block very quickly. Take essential items - tsunami flooding can last for many hours



More maps and info at:
www.nrc.govt.nz/tsunami



Copyright Reserved
Datum NZ1950. Projection NZTM
DISCLAIMER: Regional Council cannot guarantee that the information shown is accurate and should not be relied in any manner without proper consultation with the owner.



Floods

BEFORE A FLOOD

- Find out from your local council if your home or business is at risk from flooding. Ask about evacuation plans and local public alerting systems; how you can reduce the risk of future flooding to your home or business; and what to do with your pets and livestock if you have to evacuate.
- Know where the closest high ground is and how to get there.
- Develop a Household Emergency Plan. Assemble and maintain your Emergency Survival Items for your home as well as a portable getaway kit. See page 5 for details.
- Check your insurance policy to ensure you have sufficient cover.

AFTER A FLOOD

- It may not be safe to return home even when the floodwaters have receded. Continue to listen to your local radio station for civil defence instructions.
- Help others if you can, especially people who may require special assistance.
- Throw away food including canned goods and water that has been contaminated by floodwater.
- Avoid drinking or preparing food with tap water until you are certain it is not contaminated. If in doubt, check with your local council or public health authority.
- Look for and report broken utility lines to appropriate authorities.
- If your property is damaged, take notes and photographs for insurance purposes. If you rent your property, contact your landlord and your contents insurance company as soon as possible.

DURING A FLOOD OR IF A FLOOD IS IMMINENT

- Listen to your local radio stations as emergency management officials will be broadcasting the most appropriate advice for your community and situation.
- If you have a disability or need support, make contact with your support network.
- Put your household emergency plan into action and check your getaway kit. Be prepared to evacuate quickly if it becomes necessary.
- Where possible, move pets inside or to a safe place, and move stock to higher ground.
- Consider using sandbags to keep water away from your home.
- Lift valuable household items and chemicals as high above the floor as possible.
- Fill bathtubs, sinks and storage containers with clean water in case water becomes contaminated.
- Turn off utilities if told to do so by authorities as it can help prevent damage to your home or community. Unplug small appliances to avoid damage from power surges.
- Do not attempt to drive or walk through floodwaters unless it is absolutely essential.



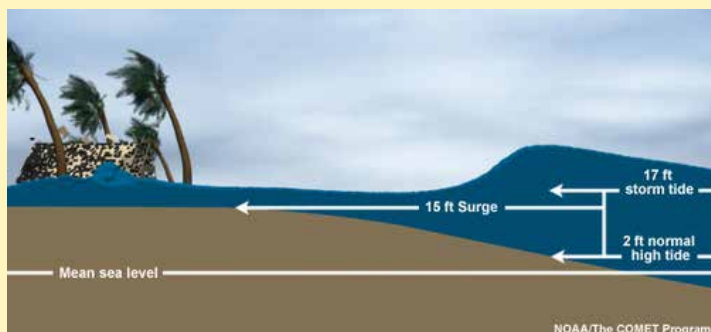


Major storms

BEFORE A STORM

- Develop a Household Emergency Plan. Assemble and maintain your Emergency Survival Items for your home as well as a portable getaway kit.
- Prepare your property for high winds. Secure large heavy objects or remove any item which can become a deadly or damaging missile. Get your roof checked regularly to make sure it is secure. List items that may need to be secured or moved indoors when strong winds are forecast.
- Keep materials at hand for repairing windows, such as tarpaulins, boards and duct tape.
- If you are renovating or building, make sure all work complies with the New Zealand building code which has specific standards to minimise storm damage.
- If farming, know which paddocks are safe to move livestock away from floodwaters, landslides and power lines.

WHEN A WARNING IS ISSUED AND DURING A STORM



How a storm surge affects the land.

- Stay informed on weather updates. Listen to your local radio stations as civil defence authorities will be broadcasting the most appropriate advice for your community and situation.
- Put your household emergency plan into action and check your getaway kit in case you have to leave in a hurry.
- Secure, or move indoors, all items that could get blown about and cause harm in strong winds.
- Close windows, external and internal doors. Pull curtains and drapes over unprotected glass areas to prevent injury from shattered or flying glass.
- If the wind becomes destructive, stay away from doors and windows and shelter further inside the house.
- Water supplies can be affected so it is a good idea to store drinking water in containers and fill bathtubs and sinks with water.
- Don't walk around outside and avoid driving unless absolutely necessary.
- Power cuts are possible in severe weather. Unplug small appliances which may be affected by electrical power surges. If power is lost unplug major appliances to reduce the power surge and possible damage when power is restored.
- Bring pets inside. Move stock to shelter. If you have to evacuate, take your pets with you.





AFTER A STORM

- Listen to your local radio stations as emergency management officials will be broadcasting the most appropriate advice for your community and situation.
- Check for injuries and help others if you can, especially people who require special assistance.
- Look for and report broken utility lines to appropriate authorities.
- Contact your local council if your house or building has been severely damaged.
- If your property or contents are damaged take notes and photographs and contact your insurance company. Inform your landlord if there is damage to the rental property.
- Ask your council for advice on how to clean up debris safely.

LANDSLIDES Warning signs

- Small slips, rock falls and subsidence at the bottom of slopes.
- Sticking doors and window frames.
- Gaps where frames are not fitting properly.
- Outside fixtures such as steps, decks, and verandahs moving or tilting away from the rest of the house.
- New cracks or bulges on the ground, road, footpath, retaining walls and other hard surfaces.
- Tilting trees, retaining walls or fences.

Tornadoes

Tornadoes sometimes occur during thunderstorms in some parts of New Zealand. A tornado is a narrow, violently rotating column of air extending downwards to the ground from the base of a thunderstorm. Warning signs include a long, continuous roar or rumble or a fast approaching cloud of debris which can sometimes be funnel shaped.

- Alert others if you can.
- Take shelter immediately. A basement offers the greatest safety. If underground shelter is not available, move to an interior room without windows on the lowest floor. Get under sturdy furniture and cover yourself with a mattress or blanket.
- If caught outside, get away from trees if you can. Lie down flat in a nearby gully, ditch or low spot and protect your head.
- If in a car, get out immediately and look for a safe place to shelter. Do not try to outrun a tornado or get under the vehicle for shelter.



Plan activation process

These instructions are for members of the Waipu community response group and emergency services for initiating their pre-planned roles.

DO THIS

- Contact members of the response group and decide on an appropriate place to meet
- Liaise to determine what actions should be taken
- Consider who will be affected and where
- Activate community warning systems i.e. phone tree, emergency vehicle PA's
- Consider the location of a control point / centre
- Consider the establishment of Civil Defence Community Centres
- Notify the emergency operations centre (EOC) of what actions have been taken by phoning the Whangarei District Council

Civil Defence Community Centres

The opening of these centres will vary depending on the type of Civil Defence Emergency

Waipu Bowling Club

4A South Road, Waipu

St Peters Anglican Church

10 Nova Scotia Drive, Waipu

Waipu Coronation Hall

The Centre, Waipu

Waipu Presbyterian Church

The Centre, Waipu

Waipu RSA

18 Nova Scotia Drive, Waipu

Waipu Golf Club

State Highway 1

Camp Waipu Cove

685 Cove Road, Waipu Cove

Waipu Cove Surf Life Saving

901 Cove Road, Waipu Cove

Waipu Primary School

6 Argyll Street, Waipu

Waipu Rugby & Squash Club

St Marys Road, Waipu

Roles and responsibilities

The role and responsibilities of the emergency services is clearly defined by legislation. In the event of this plan being activated due to an emergency event occurring, the roles and responsibilities of community groups are set out as below.

POLICE

Maintain law and order
Protect life and property
Assisting the coroner
Co-coordinating movement control
Search and rescue

FIRE SERVICE

Fire-fighting responsibilities
Containment of releases and spillages of hazardous substances
Urban search and rescue
Limitation of damage
Redistribution of water for specific needs

ST JOHN AMBULANCE

Provision of emergency medical care

CIVIL DEFENCE RESPONSE GROUP

Liaise with civil defence and emergency services to initiate and assist in a response to a civil emergency, disseminate warnings and identify and make arrangements for welfare centres if required

COASTGUARD

Coordination of Marine Rescue
Provision of alternative communication if required via VHF and SSB



Emergency contact information

Do not call 111 for information and advice. Calling 111 unnecessarily may put others who are in a genuine emergency situation at risk.



Dial 111 (Emergencies Only)
Waipu Police Station 09 432 4030
www.police.govt.nz



St John

Dial 111 (Emergencies Only)
St John Bream Bay 09 432 7311
www.stjohn.org.nz



Dial 111 (Emergencies Only)
Waipu Fire Station
www.fireandemergency.nz

Rural Fire Enquiries 09 438 9539
www.checkitsalright.nz



See from your mobile
VHF Marine 84 / 86
www.coastguard.org.nz



0800 002 004
www.nrc.govt.nz



0800 932 463
www.wdc.govt.nz



0800 362 468
www.doc.govt.nz



www.civildefence.govt.nz



www.aaroadwatch.co.nz



www.metservice.com



0800 867 363
www.topenergy.co.nz



For further information:

LOCAL COUNCIL

Whangarei District Council

0800 932 463

www.wdc.govt.nz

Far North District Council

0800 920 029

www.fndc.govt.nz

Kaipara District Council

0800 727 059

www.kaipara.govt.nz

Northland Regional Council

0800 002 004

www.nrc.govt.nz

CIVIL DEFENCE SITES

Northland Civil Defence

www.nrc.govt.nz/civildefence

www.facebook.com/civildefencenorthland

Ministry of Civil Defence

www.civildefence.govt.nz

Urban search and rescue

www.usar.govt.nz

Be prepared

www.whatstheplanstan.govt.nz

www.getthru.govt.nz

www.happens.nz

EMERGENCY SERVICES

Rural Fire Enquiries

www.checkitsalright.nz

New Zealand Police

www.police.govt.nz

Fire & Emergency New Zealand

www.fireandemergency.nz

St John Ambulance

www.stjohn.org.nz